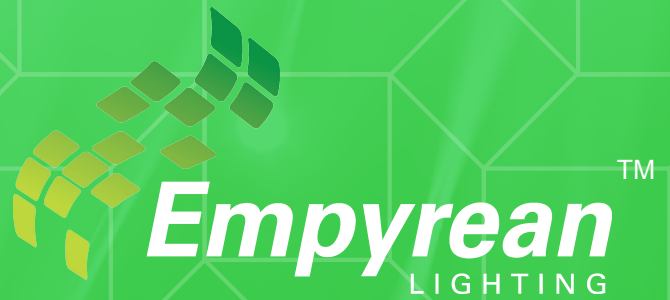


DIALUX REPORT



INDUSTRIAL BALL MILL

AndromedaXP 40W

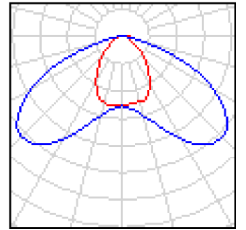
Table of contents

Project Cover	1
Table of contents	2
Stairs at Mill 2 - start conveyor	
Luminaire parts list	4
False Colour Rendering	5
Exterior Surfaces	
Ground Element	
Surface 1	
Greyscale (E)	
Calculation Surface - Mid Level Platform	
Greyscale (E, Perpendicular)	7
Conveyor from Mill 2 to Mill 3 Silo	
Luminaire parts list	8
False Colour Rendering	9
Exterior Surfaces	
Calculation Surface - Top Level Platform	
Greyscale (E, Perpendicular)	10
Mill 3 Silo Base	
Luminaire parts list	11
False Colour Rendering	12
Exterior Surfaces	
Calculation Surface - Base	
Greyscale (E, Perpendicular)	13
Mill Tower	
Luminaire parts list	14
False Colour Rendering	15
Outside Shed	
Luminaire parts list	16
False Colour Rendering	17
Exterior Surfaces	
Calculation Surface - Base	
Greyscale (E, Perpendicular)	18
Low Platform at Inching Motor	
Luminaire parts list	19
False Colour Rendering	20
Exterior Surfaces	
Calculation Surface - Ground Level	
Greyscale (E, Perpendicular)	21
Stairs to end of Mill	
Luminaire parts list	22
False Colour Rendering	23
Operator Area	
Luminaire parts list	24
False Colour Rendering	25
Exterior Surfaces	
Calculation Surface - Operator	
Greyscale (E, Perpendicular)	26
Calculation Surface - Inside	
Greyscale (E, Perpendicular)	27
Power Box	
Luminaire parts list	28
False Colour Rendering	29
Exterior Surfaces	

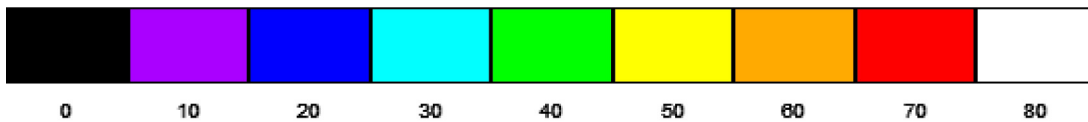
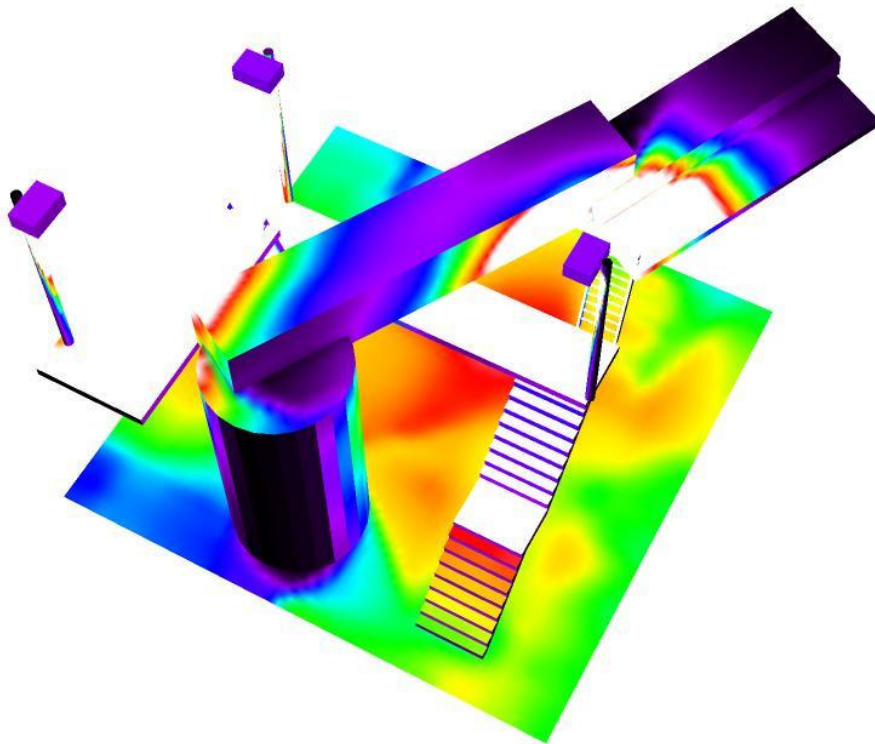
Stairs at Mill 2 - start conveyor / Luminaire parts list

3 Pieces Empyrean Lighting AndromedaXP-40W-Lens8
Article No.:
Luminous flux (Luminaire): 3206 lm
Luminous flux (Lamps): 3211 lm
Luminaire Wattage: 40.0 W
Luminaire classification according to CIE: 100
CIE flux code: 45 82 96 100 100
Fitting: 1 x Nichia 183 (Correction Factor 1.000).

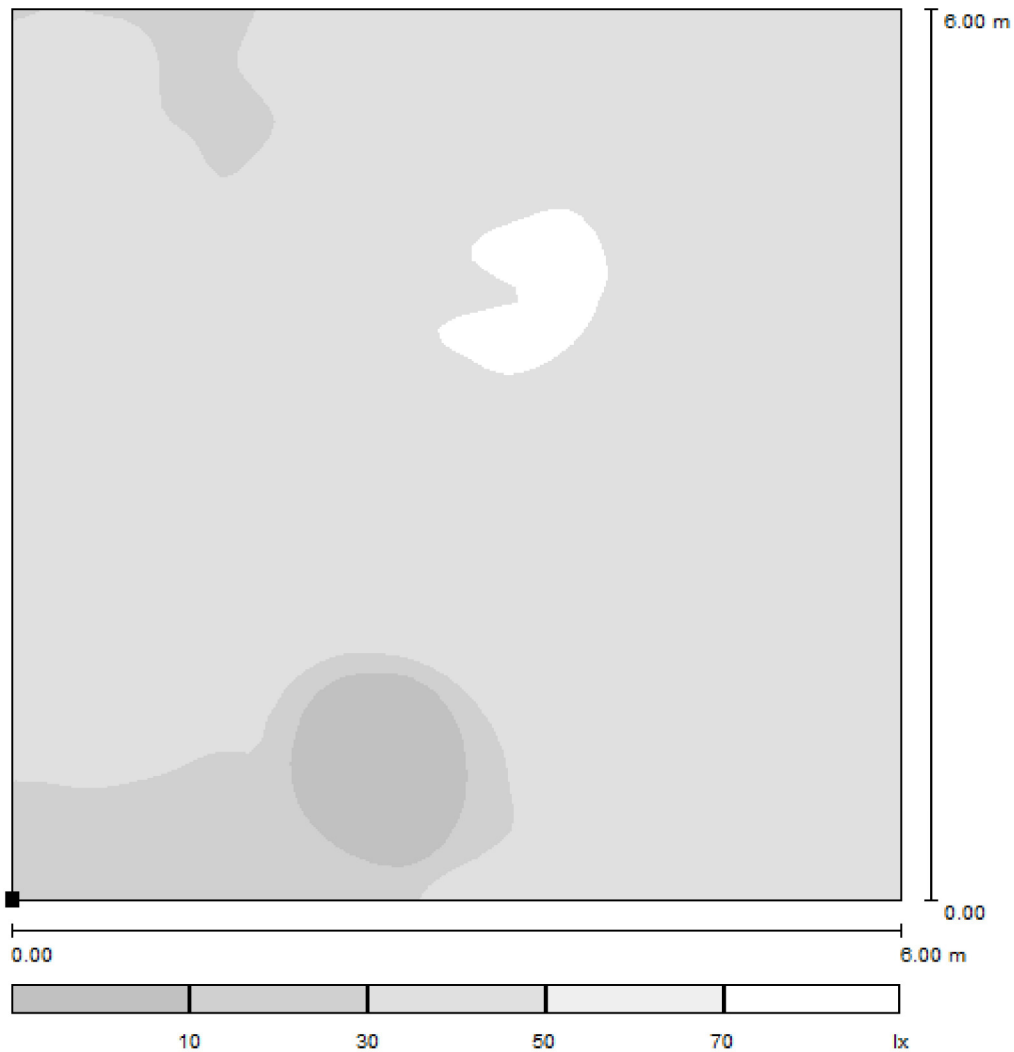
See our luminaire catalog for an image of the luminaire.



Stairs at Mill 2 - start conveyor / False Colour Rendering



Stairs at Mill 2 - start conveyor / Ground Element / Surface 1 / Greyscale (E)



Scale 1 : 51

Position of surface in external scene:

Marked point:

(34.500 m, 94.500 m, 0.000 m)



Grid: 64 x 64 Points

E_{av} [lx]
46

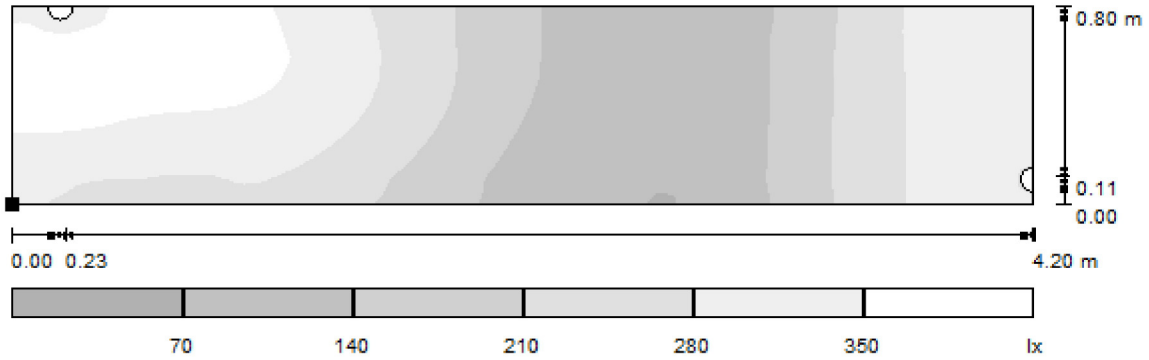
E_{min} [lx]
1.19

E_{max} [lx]
75

u_0
0.026

E_{min} / E_{max}
0.016

Stairs at Mill 2 - start conveyor / Calculation Surface - Mid Level Platform / Greyscale (E, Perpendicular)

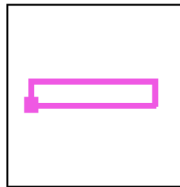


Scale 1 : 31

Position of surface in external scene:

Marked point:

(35.300 m, 97.200 m, 2.750 m)



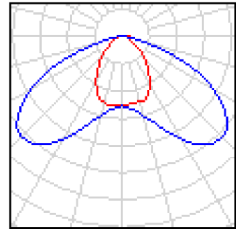
Grid: 128 x 64 Points

E_{av} [lx]	E_{min} [lx]	E_{max} [lx]	u_0	E_{min} / E_{max}
236	65	370	0.274	0.175

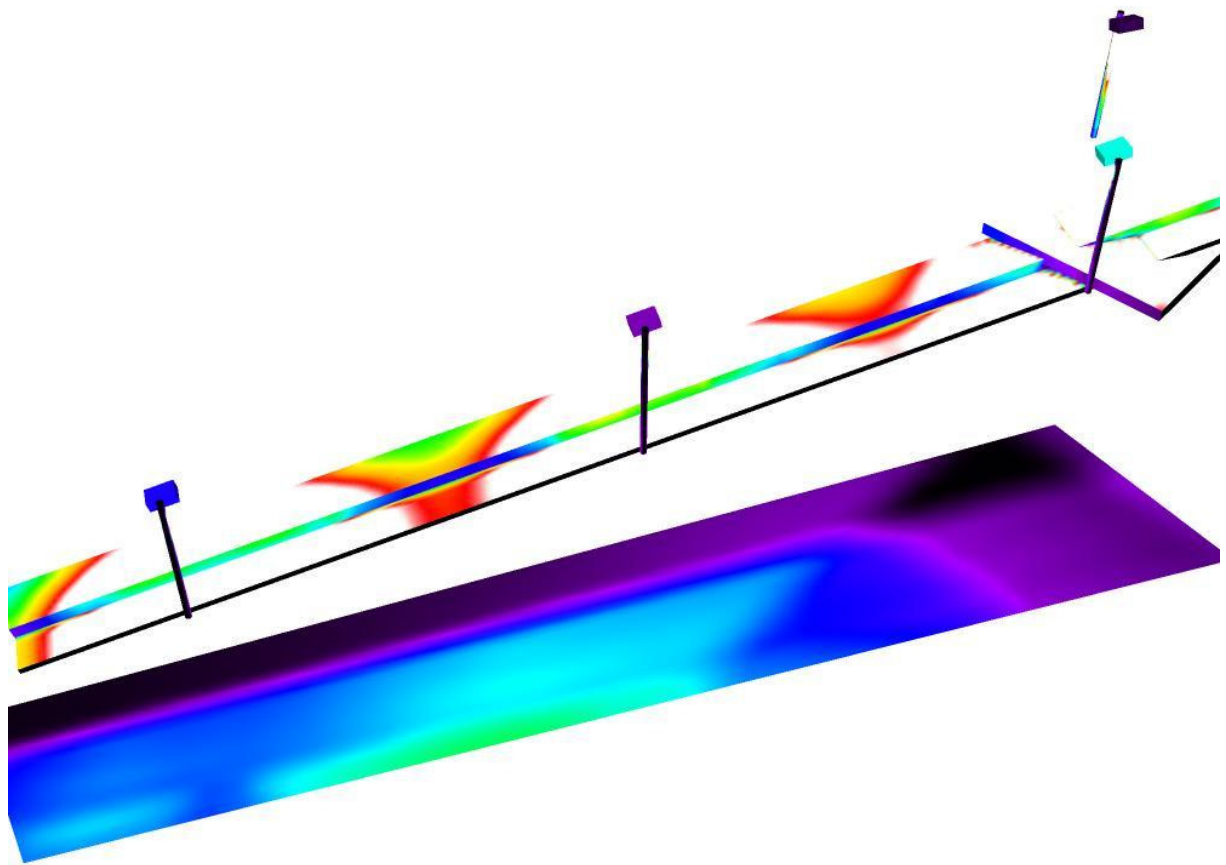
Conveyor from Mill 2 to Mill 3 Silo / Luminaire parts list

4 Pieces Empyrean Lighting AndromedaXP-40W-Lens8
Article No.:
Luminous flux (Luminaire): 3206 lm
Luminous flux (Lamps): 3211 lm
Luminaire Wattage: 40.0 W
Luminaire classification according to CIE: 100
CIE flux code: 45 82 96 100 100
Fitting: 1 x Nichia 183 (Correction Factor 1.000).

See our luminaire catalog for an image of the luminaire.

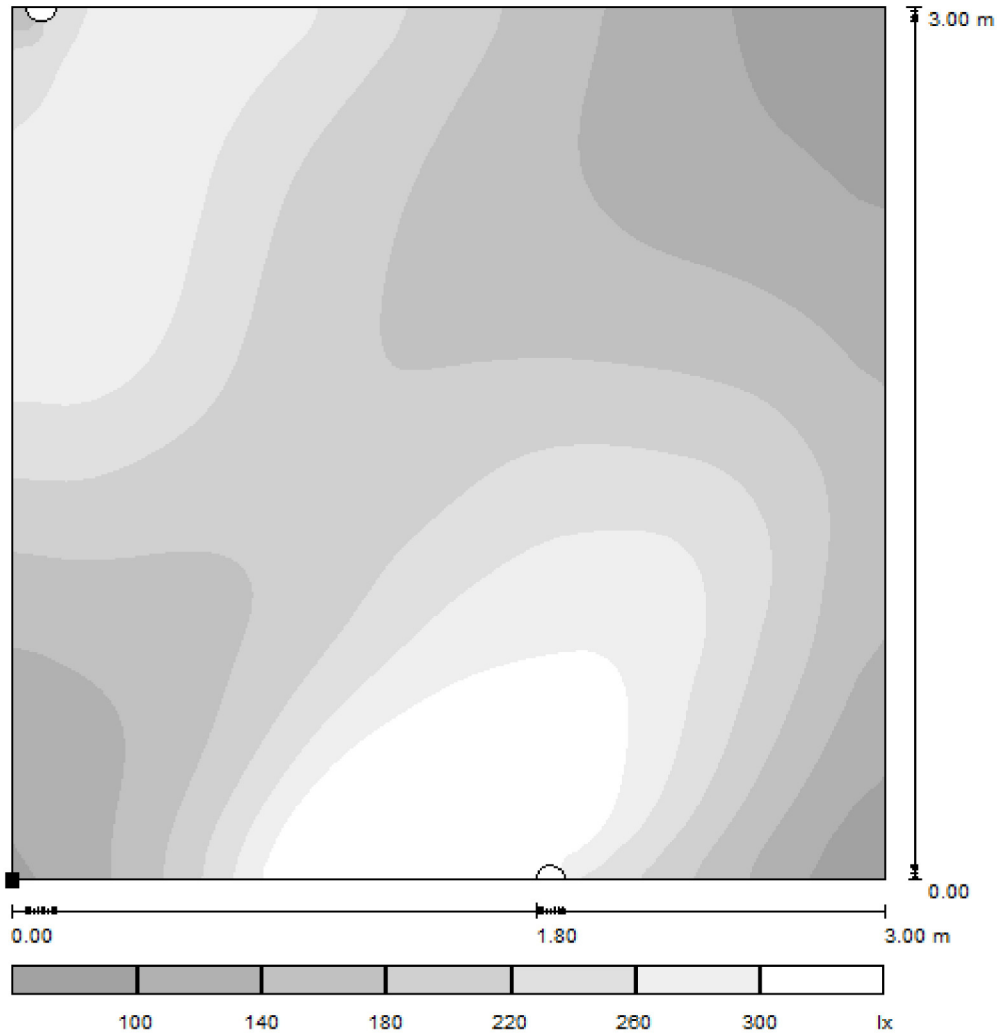


Conveyor from Mill 2 to Mill 3 Silo / False Colour Rendering



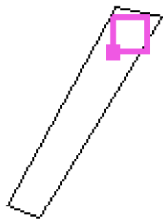
lx

Conveyor from Mill 2 to Mill 3 Silo / Calculation Surface - Top Level Platform / Greyscale (E, Perpendicular)



Scale 1 : 26

Position of surface in external scene:
Marked point:
(45.900 m, 112.600 m, 7.750 m)



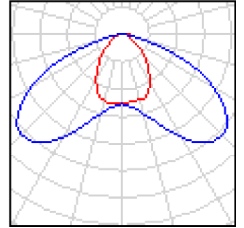
Grid: 128 x 64 Points

E_{av} [lx]	E_{min} [lx]	E_{max} [lx]	u_0	E_{min} / E_{max}
208	71	448	0.342	0.159

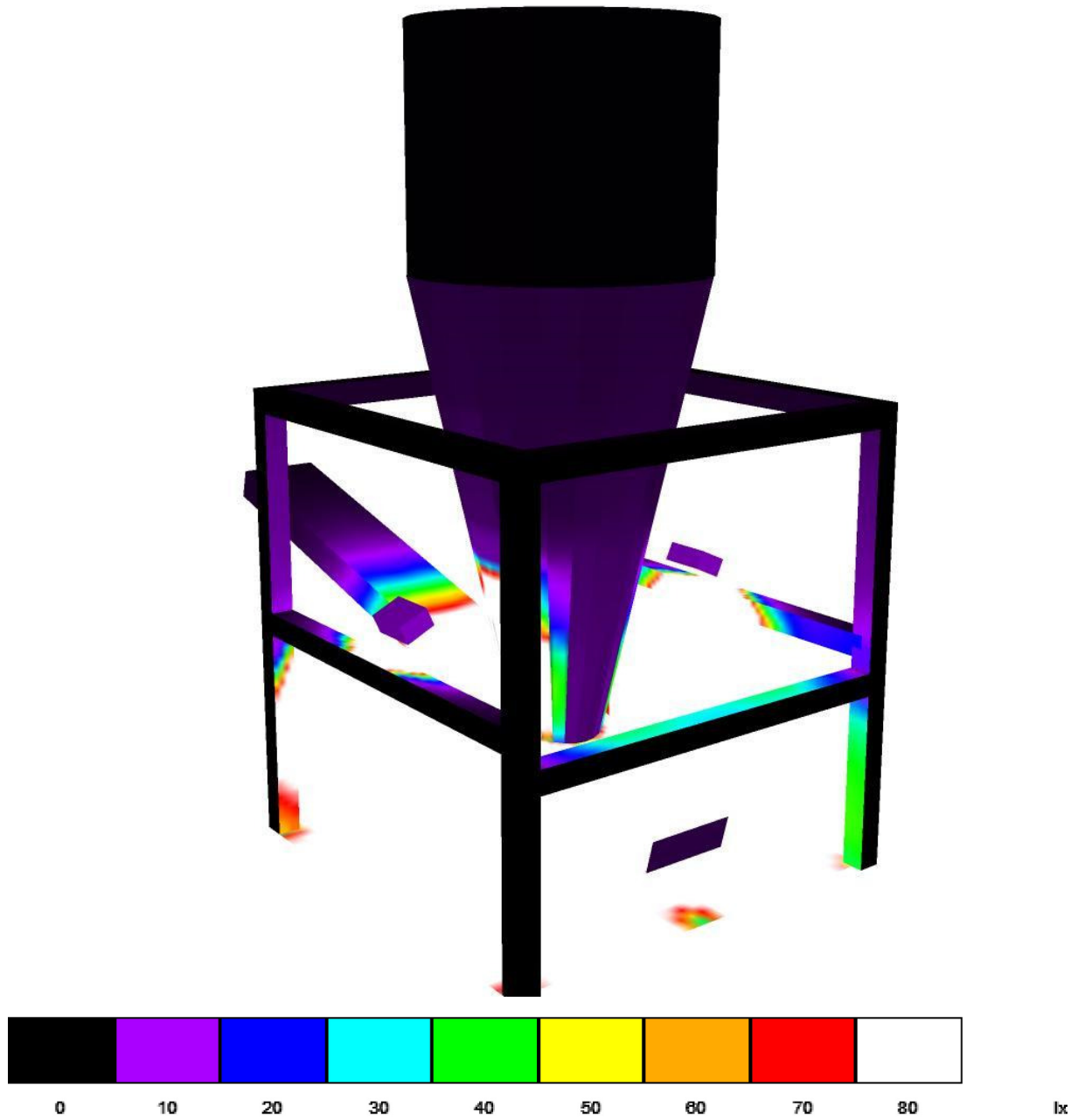
Mill 3 Silo Base / Luminaire parts list

2 Pieces Empyrean Lighting AndromedaXP-40W-Lens8
Article No.:
Luminous flux (Luminaire): 3206 lm
Luminous flux (Lamps): 3211 lm
Luminaire Wattage: 40.0 W
Luminaire classification according to CIE: 100
CIE flux code: 45 82 96 100 100
Fitting: 1 x Nichia 183 (Correction Factor 1.000).

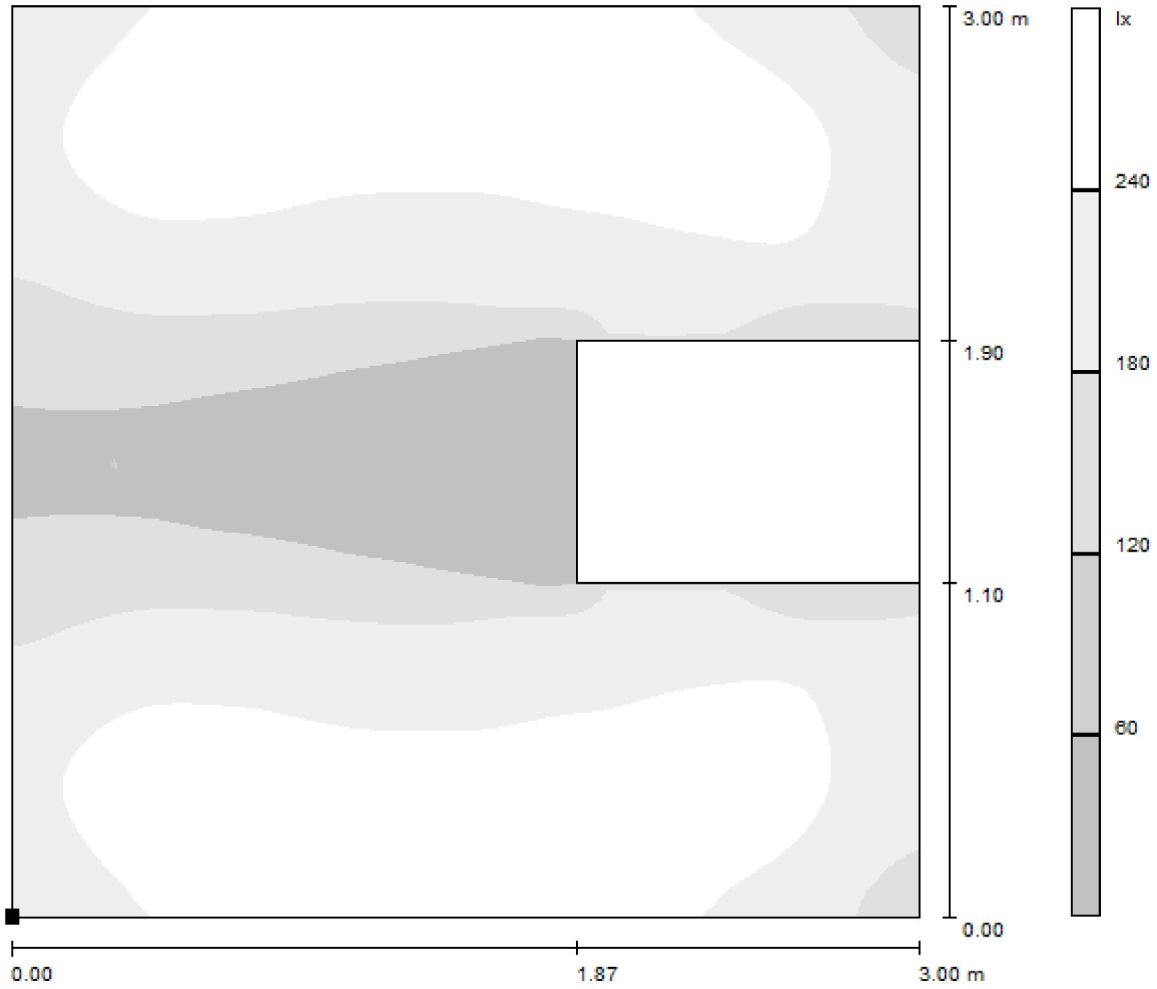
See our luminaire catalog for an image of the luminaire.



Mill 3 Silo Base / False Colour Rendering



Mill 3 Silo Base / Calculation Surface - Base / Greyscale (E, Perpendicular)

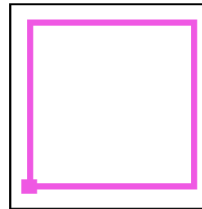


Scale 1 : 25

Position of surface in external scene:

Marked point:

(46.350 m, 112.900 m, 0.750 m)



Grid: 128 x 64 Points

E_{av} [lx]
203

E_{min} [lx]
6.39

E_{max} [lx]
282

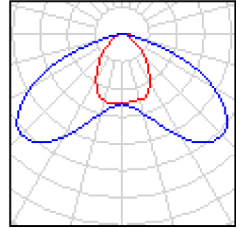
u_0
0.031

E_{min} / E_{max}
0.023

Mill Tower / Luminaire parts list

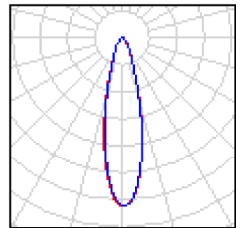
7 Pieces
Empyrean Lighting AndromedaXP-40W-Lens8
Article No.:
Luminous flux (Luminaire): 3206 lm
Luminous flux (Lamps): 3211 lm
Luminaire Wattage: 40.0 W
Luminaire classification according to CIE: 100
CIE flux code: 45 82 96 100 100
Fitting: 1 x Nichia 183 (Correction Factor 1.000).

See our luminaire catalog for an image of the luminaire.

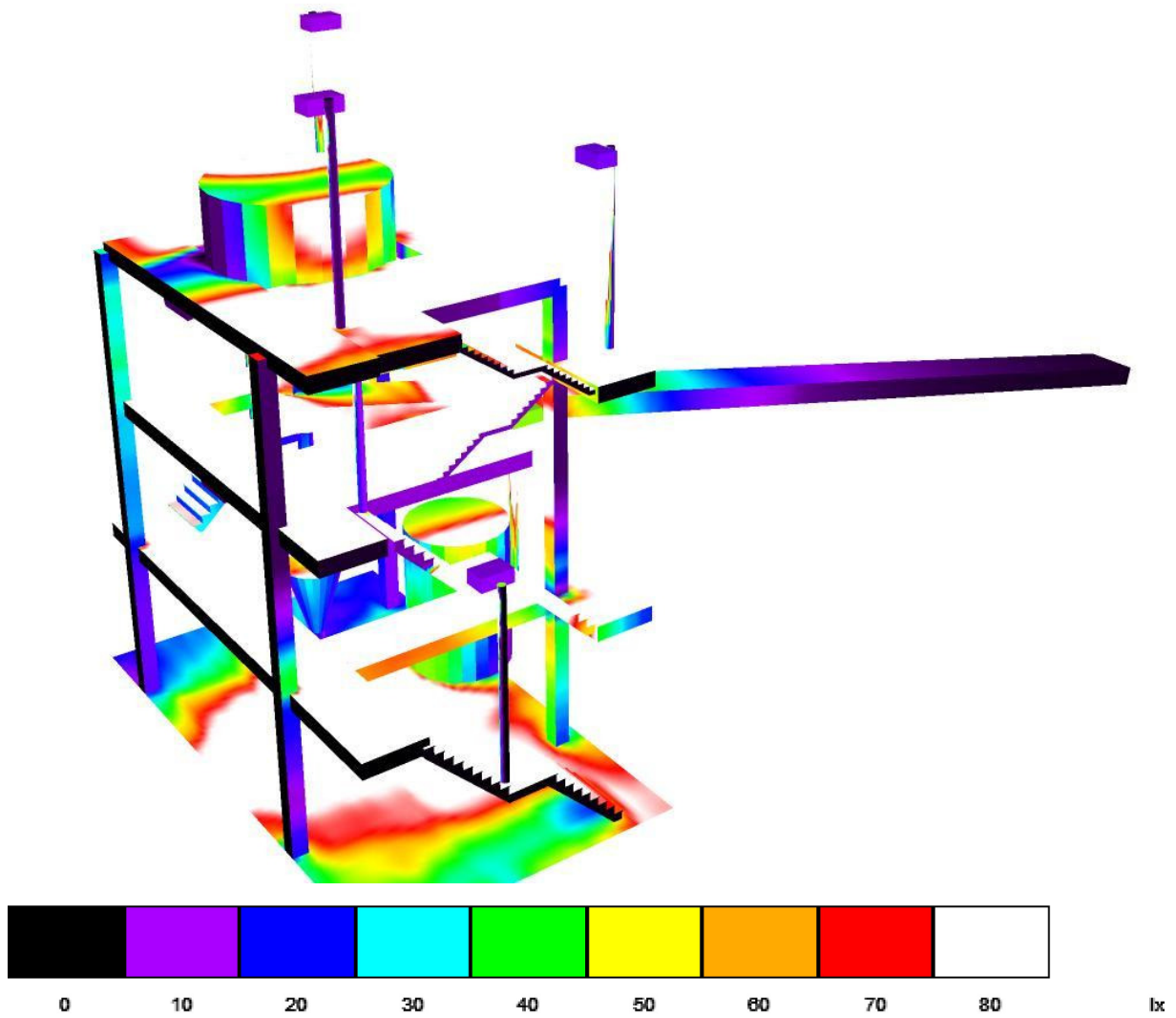


2 Pieces
Empyrean Lighting NebulaXPB-L18W-25-NW
Article No.:
Luminous flux (Luminaire): 1979 lm
Luminous flux (Lamps): 1980 lm
Luminaire Wattage: 18.0 W
Luminaire classification according to CIE: 100
CIE flux code: 87 95 98 100 103
Fitting: 1 x Nichia 219B-L69 (Correction Factor 1.000).

See our luminaire catalog for an image of the luminaire.



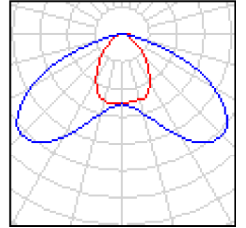
Mill Tower / False Colour Rendering



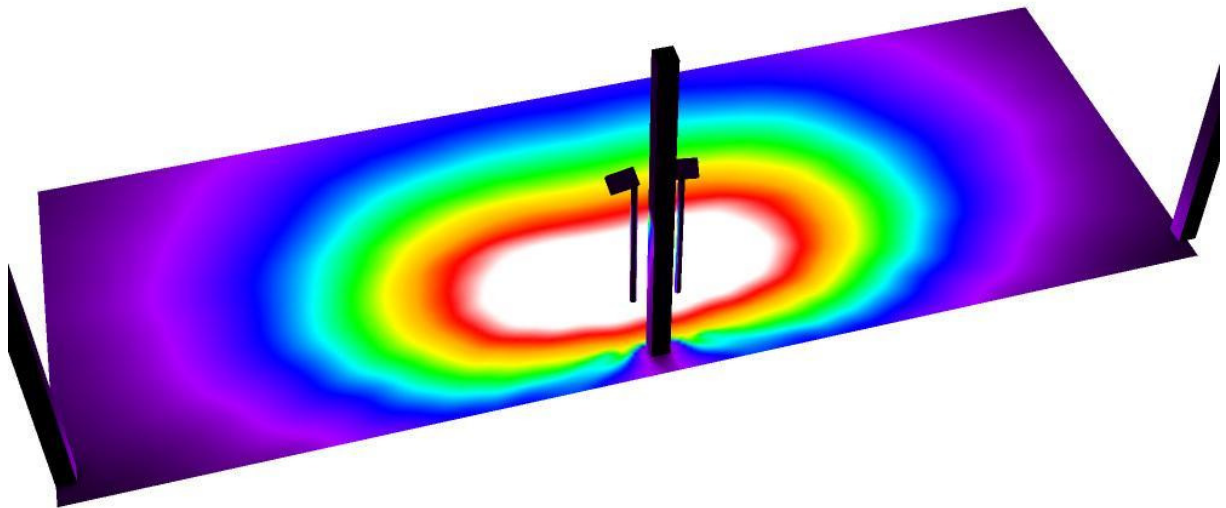
Outside Shed / Luminaire parts list

2 Pieces Empyrean Lighting AndromedaXP-40W-Lens8
Article No.:
Luminous flux (Luminaire): 3206 lm
Luminous flux (Lamps): 3211 lm
Luminaire Wattage: 40.0 W
Luminaire classification according to CIE: 100
CIE flux code: 45 82 96 100 100
Fitting: 1 x Nichia 183 (Correction Factor 1.000).

See our luminaire catalog for an image of the luminaire.

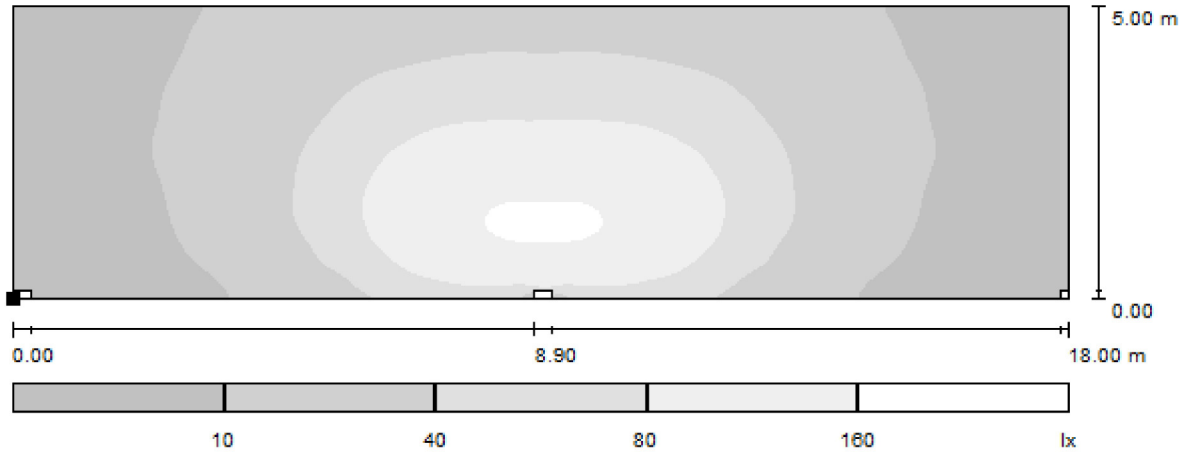


Outside Shed / False Colour Rendering



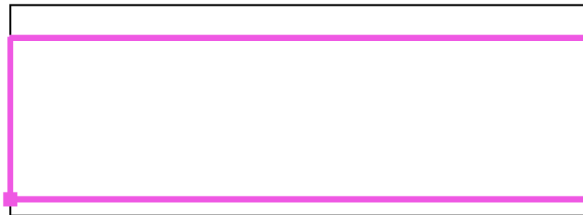
0 10 20 30 40 50 60 70 80 lx

Outside Shed / Calculation Surface - Base / Greyscale (E, Perpendicular)



Scale 1 : 129

Position of surface in external scene:
 Marked point:
 (20.000 m, 120.000 m, 0.750 m)



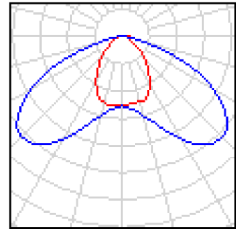
Grid: 128 x 64 Points

E_{av} [lx]	E_{min} [lx]	E_{max} [lx]	$u0$	E_{min} / E_{max}
40	1.62	171	0.041	0.009

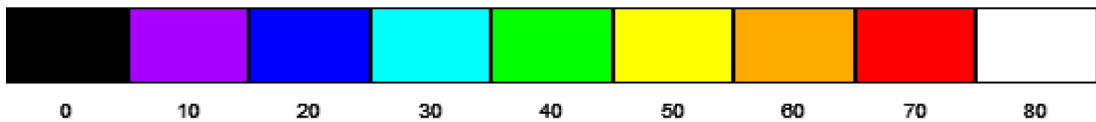
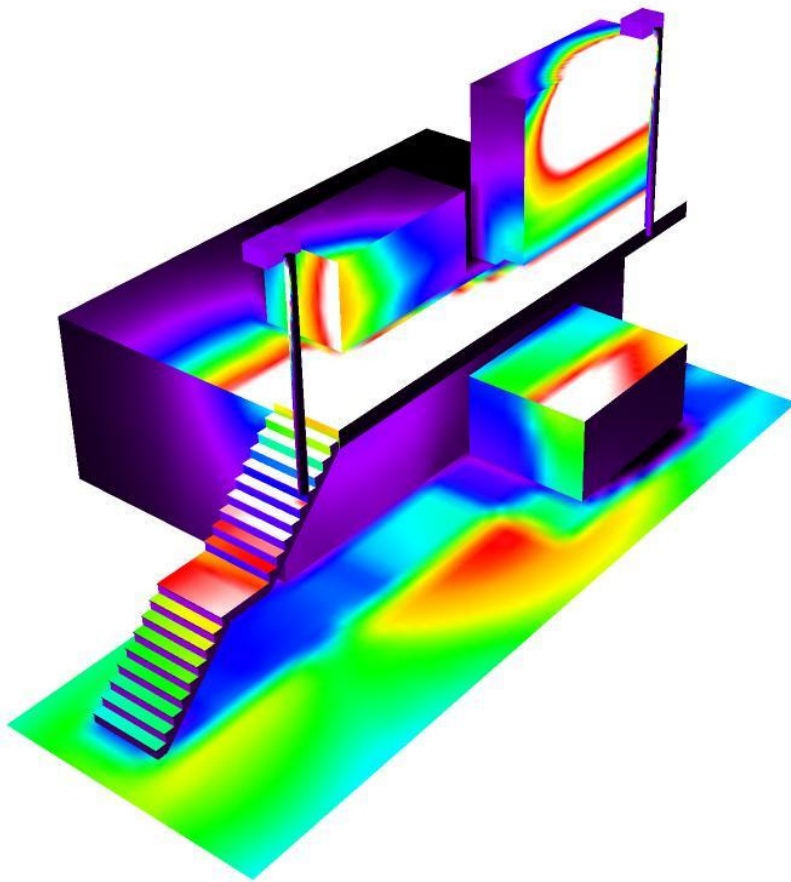
Low Platform at Inching Motor / Luminaire parts list

2 Pieces Empyrean Lighting AndromedaXP-40W-Lens8
Article No.:
Luminous flux (Luminaire): 3206 lm
Luminous flux (Lamps): 3211 lm
Luminaire Wattage: 40.0 W
Luminaire classification according to CIE: 100
CIE flux code: 45 82 96 100 100
Fitting: 1 x Nichia 183 (Correction Factor 1.000).

See our luminaire catalog for an image of the luminaire.

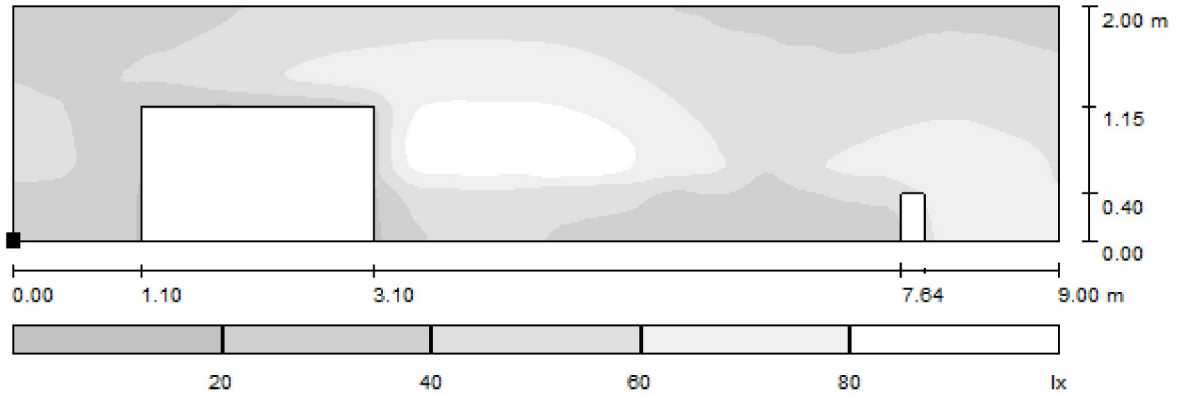


Low Platform at Inching Motor / False Colour Rendering



lx

Low Platform at Inching Motor / Calculation Surface - Ground Level / Greyscale (E, Perpendicular)



Scale 1 : 65

Position of surface in external scene:
Marked point:
(19.700 m, 118.300 m, 0.750 m)



Grid: 128 x 32 Points

E_{av} [lx]
51

E_{min} [lx]
13

E_{max} [lx]
94

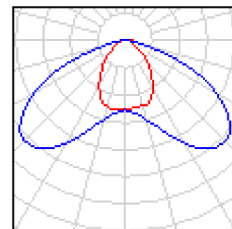
u_0
0.246

E_{min} / E_{max}
0.133

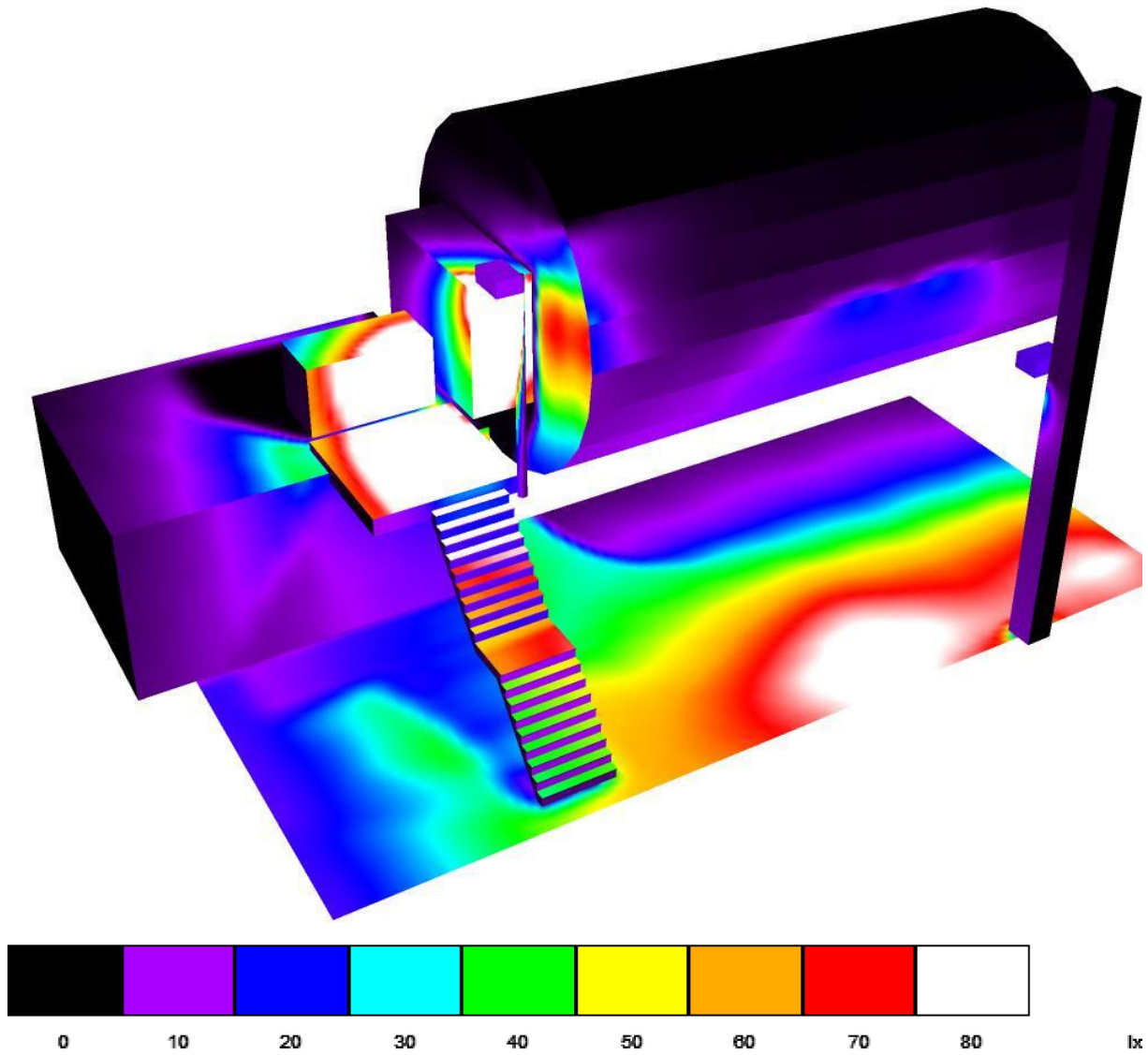
Stairs to end of Mill / Luminaire parts list

2 Pieces Empyrean Lighting AndromedaXP-40W-Lens8
Article No.:
Luminous flux (Luminaire): 3206 lm
Luminous flux (Lamps): 3211 lm
Luminaire Wattage: 40.0 W
Luminaire classification according to CIE: 100
CIE flux code: 45 82 96 100 100
Fitting: 1 x Nichia 183 (Correction Factor 1.000).

See our luminaire catalog for an image of the luminaire.



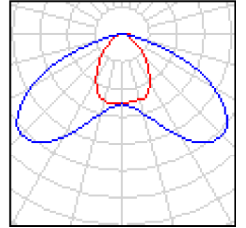
Stairs to end of Mill / False Colour Rendering



Operator Area / Luminaire parts list

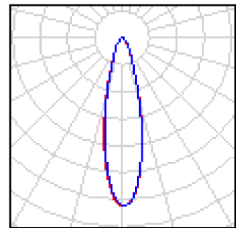
2 Pieces Empyrean Lighting AndromedaXP-40W-Lens8
Article No.:
Luminous flux (Luminaire): 3206 lm
Luminous flux (Lamps): 3211 lm
Luminaire Wattage: 40.0 W
Luminaire classification according to CIE: 100
CIE flux code: 45 82 96 100 100
Fitting: 1 x Nichia 183 (Correction Factor 1.000).

See our luminaire catalog for an image of the luminaire.

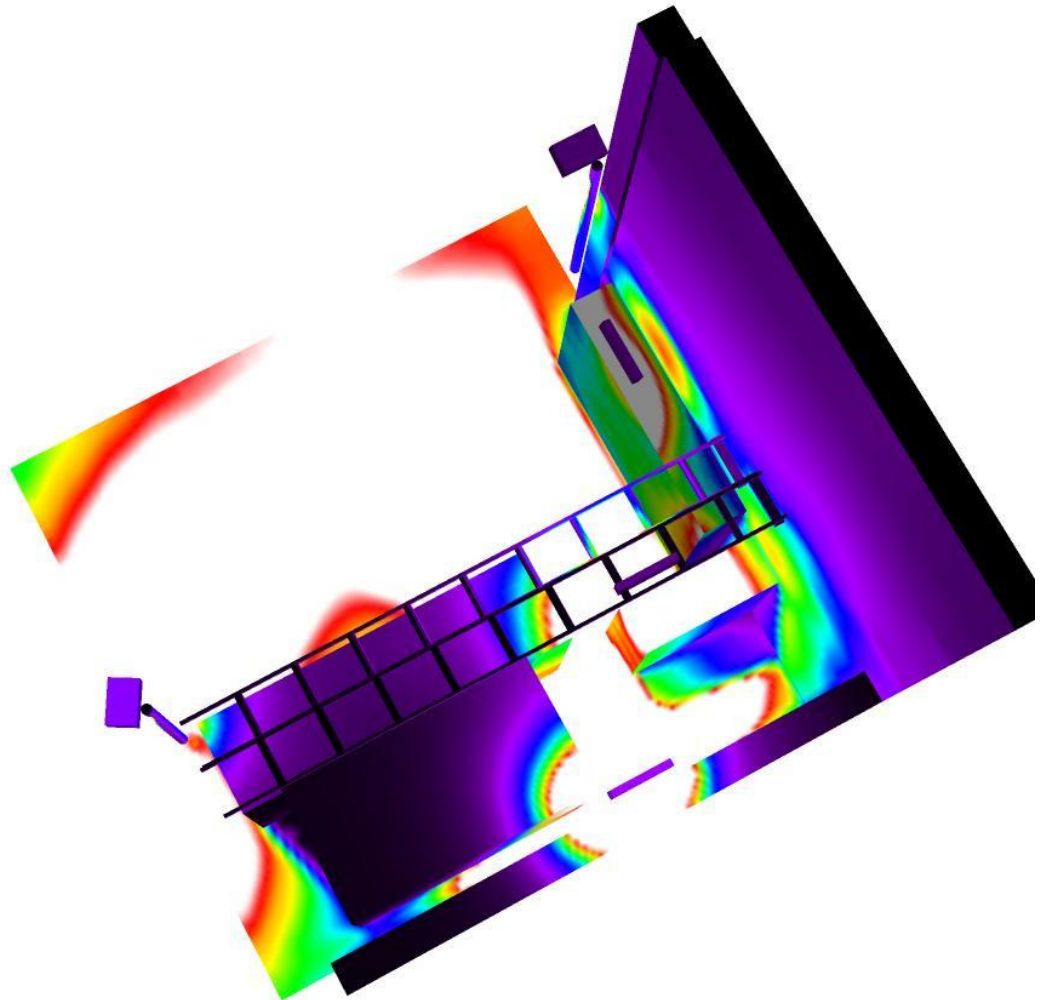


3 Pieces Empyrean Lighting NebulaXPB-L18W-25-NW
Article No.:
Luminous flux (Luminaire): 1979 lm
Luminous flux (Lamps): 1980 lm
Luminaire Wattage: 18.0 W
Luminaire classification according to CIE: 100
CIE flux code: 87 95 98 100 103
Fitting: 1 x Nichia 219B-L69 (Correction Factor 1.000).

See our luminaire catalog for an image of the luminaire.

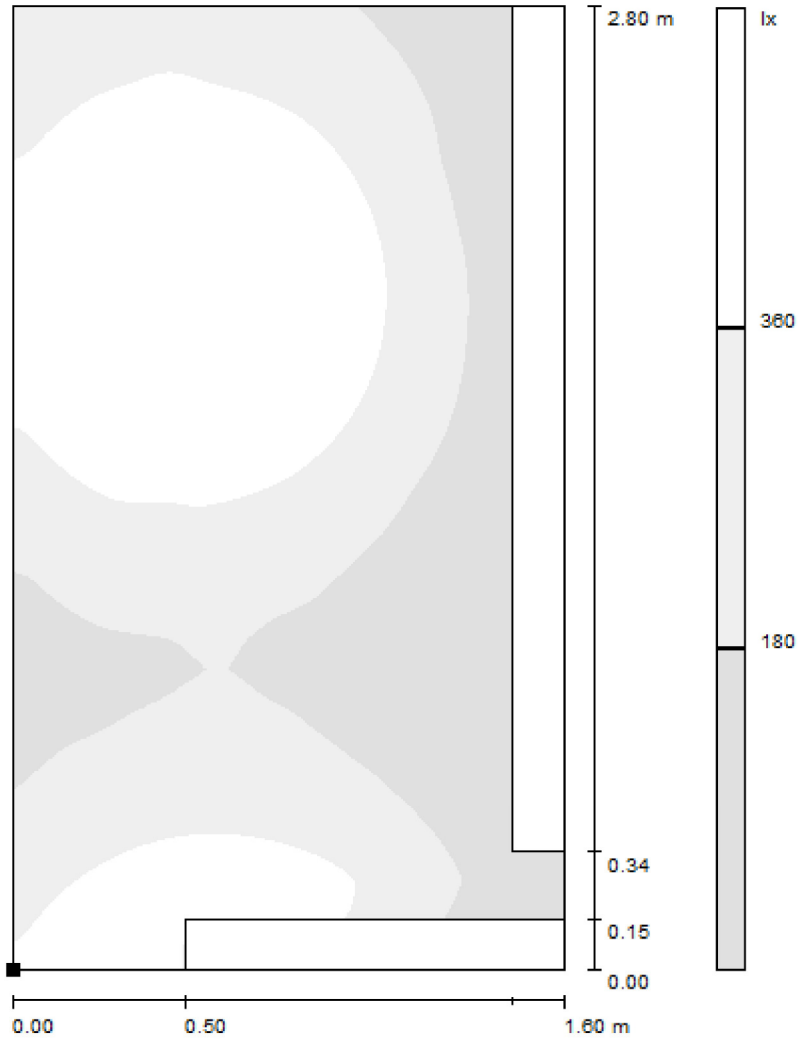


Operator Area / False Colour Rendering



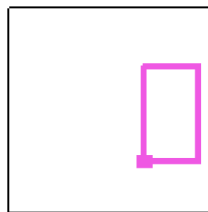
0 10 20 30 40 50 60 70 80 lx

Operator Area / Calculation Surface - Operator / Greyscale (E, Perpendicular)



Scale 1 : 22

Position of surface in external scene:
Marked point:
(16.100 m, 110.000 m, 0.750 m)



Grid: 128 x 64 Points

E_{av} [lx]
332

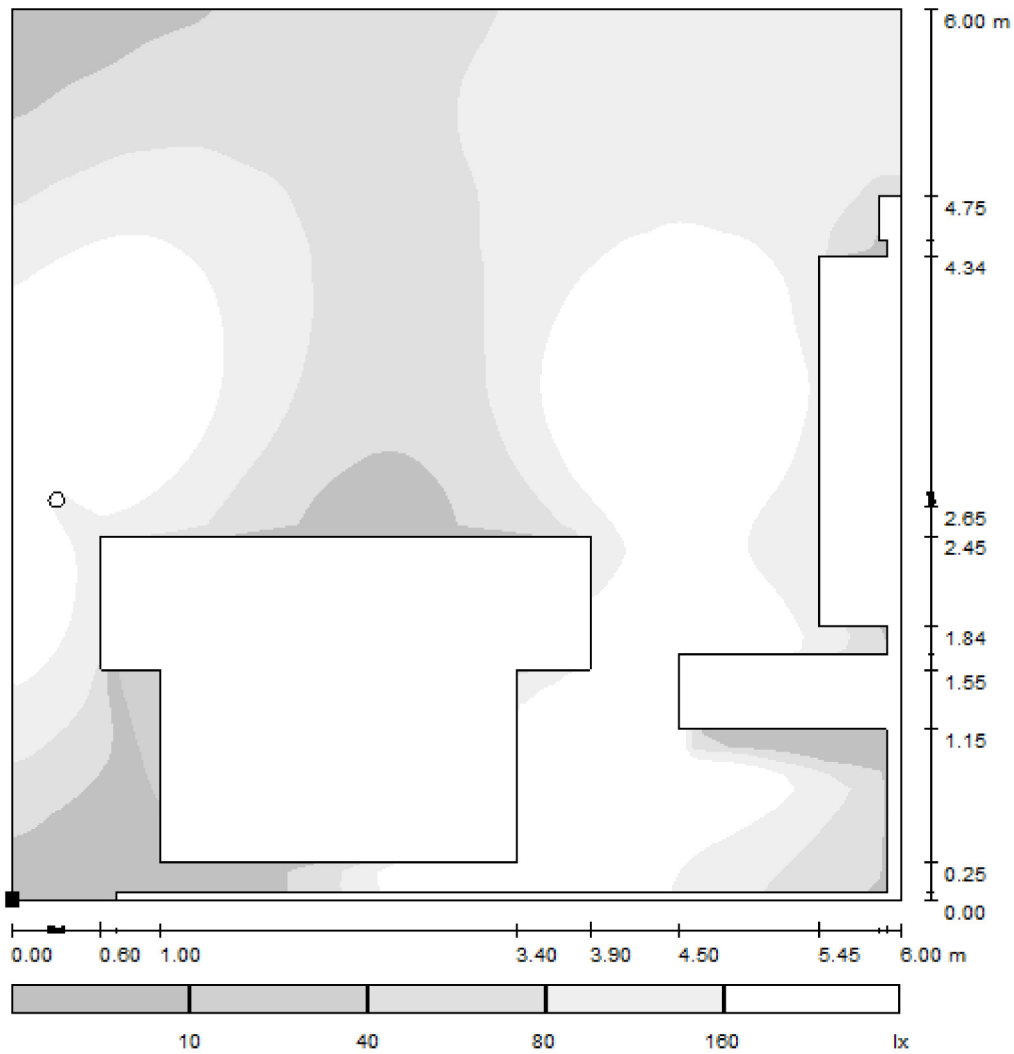
E_{min} [lx]
72

E_{max} [lx]
915

u_0
0.216

E_{min} / E_{max}
0.078

Operator Area / Calculation Surface - Inside / Greyscale (E, Perpendicular)



Scale 1 : 51

Position of surface in external scene:
Marked point:
(12.100 m, 108.500 m, 0.750 m)



Grid: 128 x 64 Points

E_{av} [lx]
163

E_{min} [lx]
0.68

E_{max} [lx]
1131

u_0
0.004

E_{min} / E_{max}
0.001