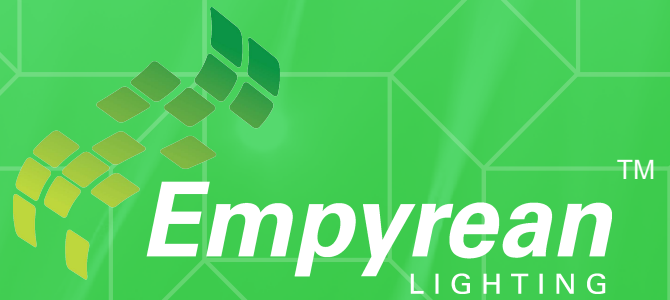


DIALUX REPORT



EXTERNAL CAR PARK

AndromedaXPB Park 40W

## Table of contents

Project Cover	1
Table of contents	2
<b>Exterior Scene</b>	
Planning data	3
Luminaire parts list	4
Luminaires (layout plan)	5
Calculation surfaces (results overview)	6
3D Rendering	7
False Colour Rendering	8
<b>Exterior Surfaces</b>	
<b>Calculation Surface - Area 1</b>	
Isolines (E, Perpendicular)	9
Value Chart (E, Perpendicular)	10
<b>Calculation Surface - Area 1 Disabled</b>	
Isolines (E, Perpendicular)	11
Value Chart (E, Perpendicular)	12
<b>Calculation Surface - Area 2</b>	
Isolines (E, Perpendicular)	13
Value Chart (E, Perpendicular)	14
<b>Calculation Surface - Area 2 Disabled</b>	
Isolines (E, Perpendicular)	15
Value Chart (E, Perpendicular)	16

## Exterior Scene / Planning data



Maintenance factor: 0.70, ULR (Upward Light Ratio): 0.0%

Scale 1:1657

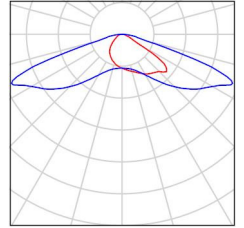
### Luminaire Parts List

No.	Pieces	Designation (Correction Factor)	$\Phi$ (Luminaire) [lm]	$\Phi$ (Lamps) [lm]	P [W]
1	53	Empyrean Lighting AndromedaXPB-Park-40W-Lens34 (1.000)	4402	4400	40.0
Total:			233284	233200	2120.0

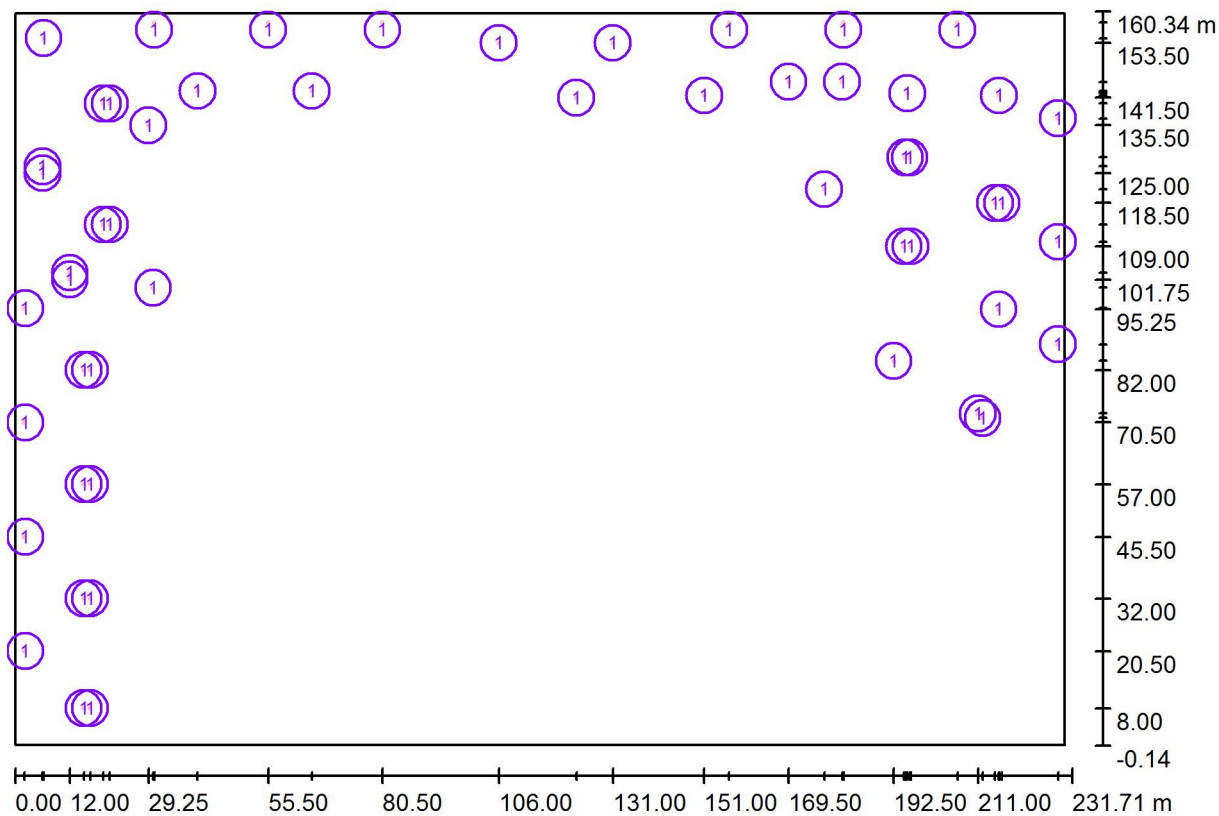
## Exterior Scene / Luminaire parts list

53 Pieces    Empyrean Lighting AndromedaXPB-Park-40W-  
Lens34  
Article No.:  
Luminous flux (Luminaire): 4402 lm  
Luminous flux (Lamps): 4400 lm  
Luminaire Wattage: 40.0 W  
Luminaire classification according to CIE: 100  
CIE flux code: 29 70 96 100 100  
Fitting: 1 x Nichia 219B (Correction Factor 1.000).

See our luminaire  
catalog for an image of  
the luminaire.



## Exterior Scene / Luminaires (layout plan)

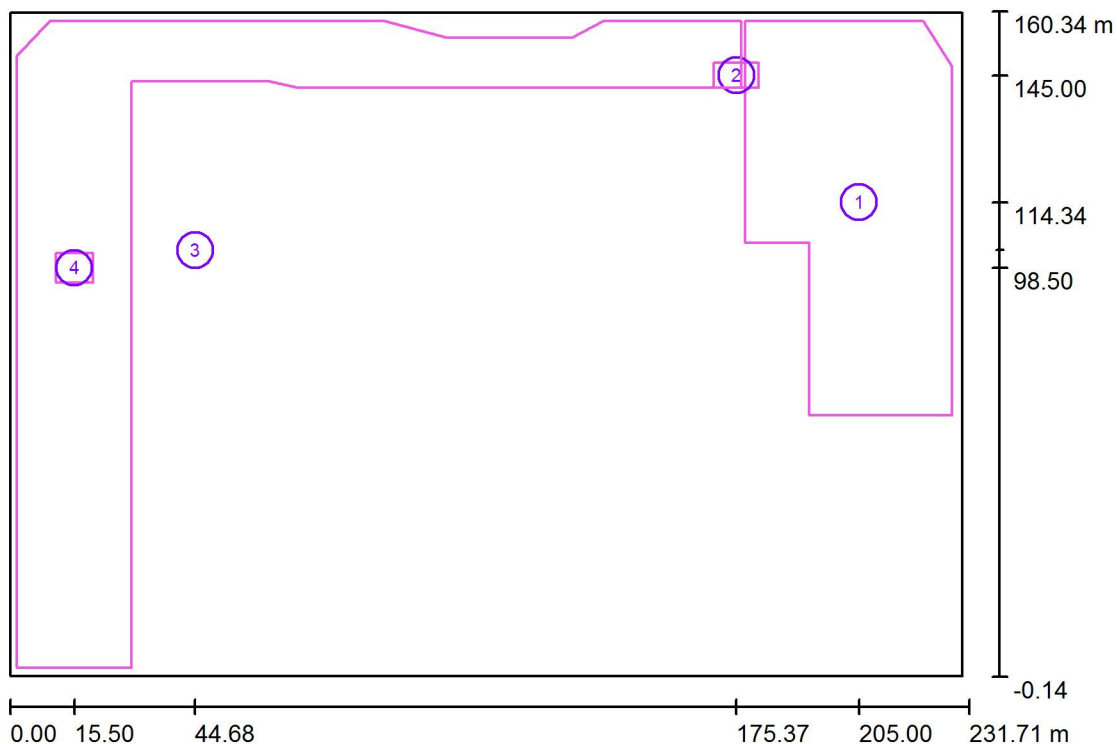


Scale 1 : 1657

### Luminaire Parts List

No.	Pieces	Designation
1	53	Empyrean Lighting AndromedaXPB-Park-40W-Lens34

## Exterior Scene / Calculation surfaces (results overview)



Scale 1 : 1827

### Calculation Surface List

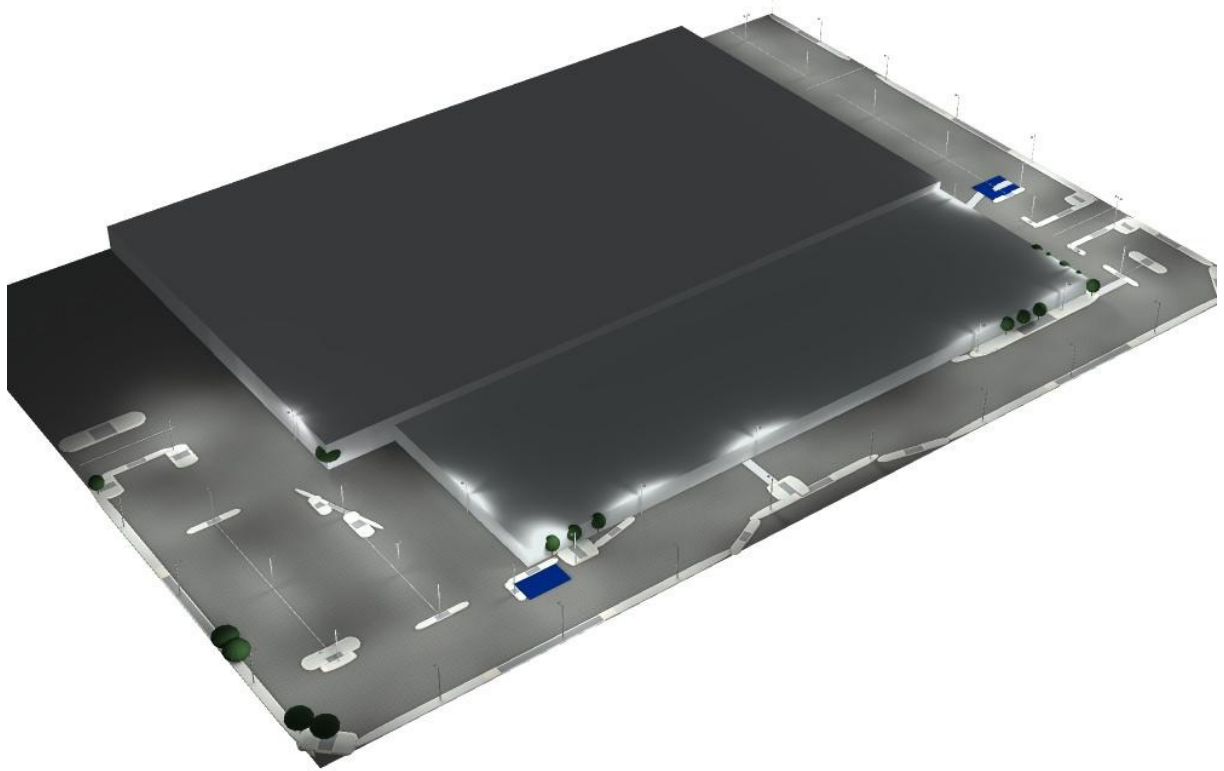
No.	Designation	Type	Grid	$E_{av}$ [lx]	$E_{min}$ [lx]	$E_{max}$ [lx]	u0	$E_{min} / E_{max}$
1	Calculation Surface - Area 1	perpendicular	128 x 128	11	1.95	23	0.173	0.084
2	Calculation Surface - Area 1 Disabled	perpendicular	16 x 16	18	15	20	0.879	0.777
3	Calculation Surface - Area 2	perpendicular	128 x 128	13	1.28	28	0.101	0.045
4	Calculation Surface - Area 2 Disabled	perpendicular	32 x 32	20	15	28	0.729	0.528

### Summary of Results

Type	Quantity	Average [lx]	Min [lx]	Max [lx]	u0	$E_{min} / E_{max}$
perpendicular	4	12	1.28	28	0.10	0.05

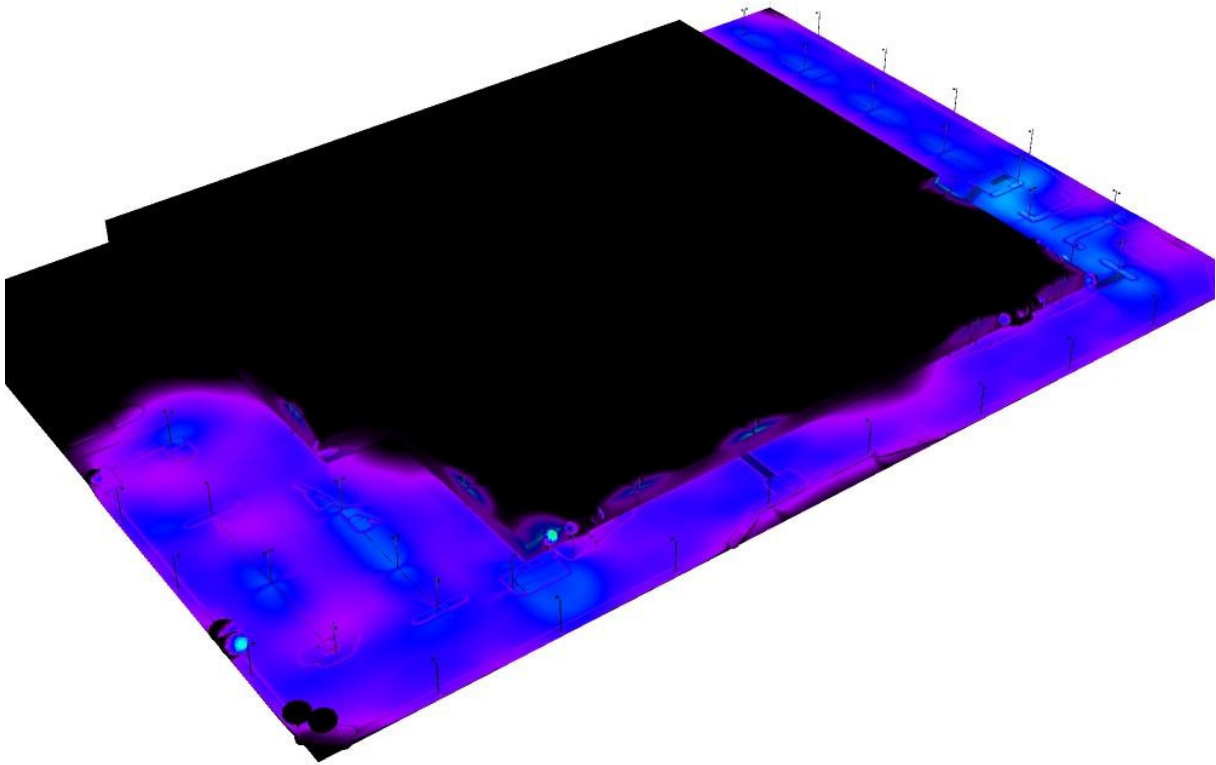


## Exterior Scene / 3D Rendering





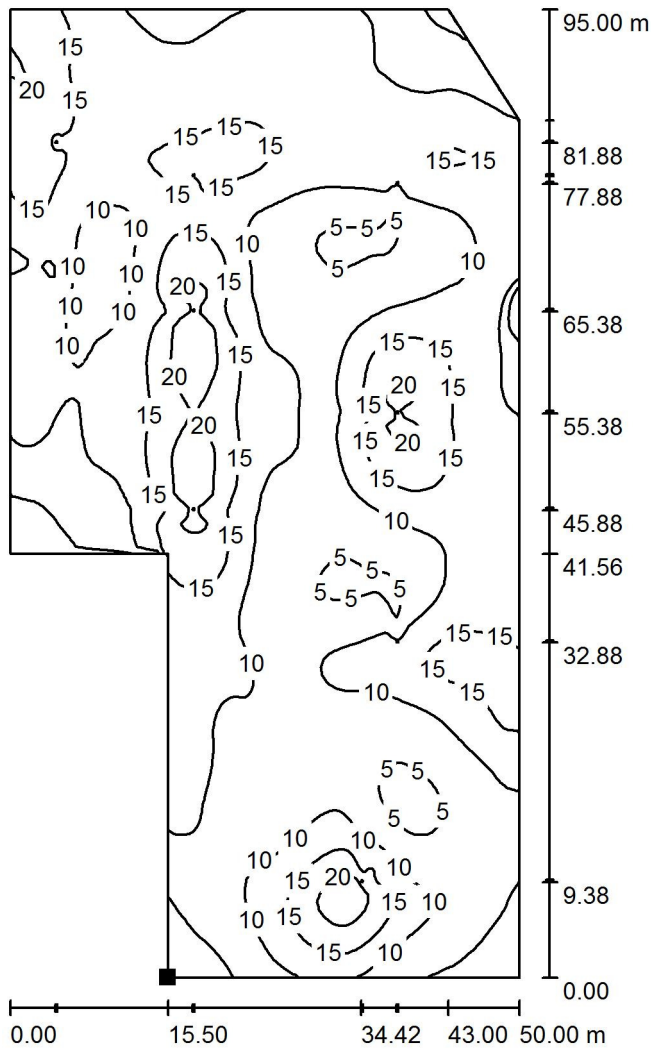
# Exterior Scene / False Colour Rendering



1      5      15      30      60      100      150      200      300      lx

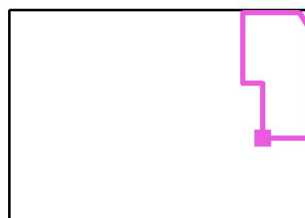


### Exterior Scene / Calculation Surface - Area 1 / Isolines (E, Perpendicular)



Values in Lux, Scale 1 : 743

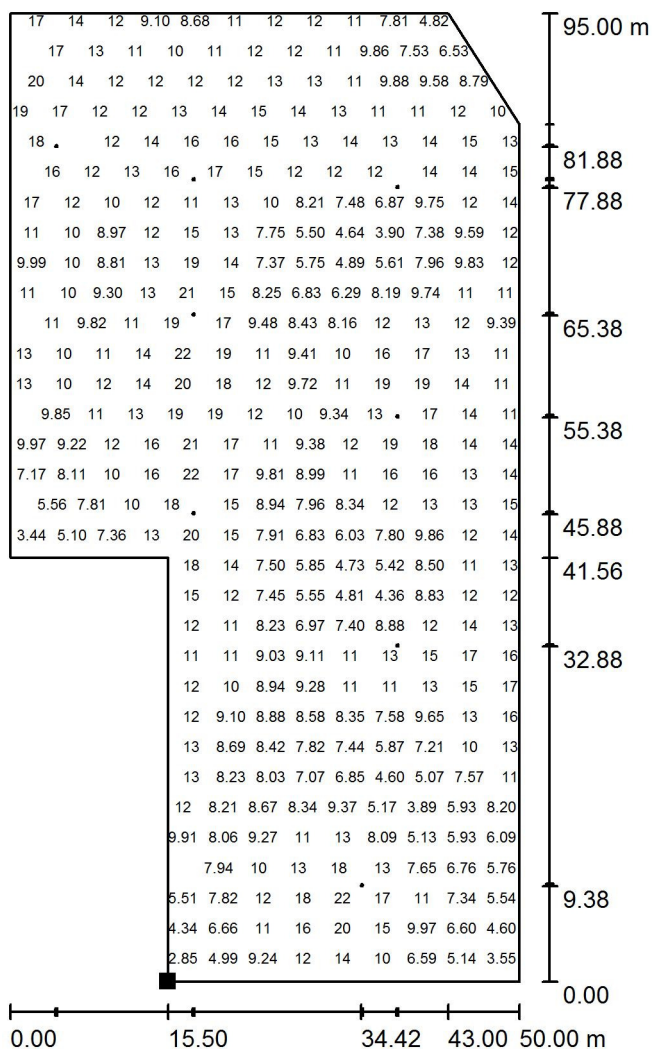
Position of surface in external scene:  
 Marked point:  
 (192.979 m, 63.018 m, 0.750 m)



Grid: 128 x 128 Points

$E_{av}$ [lx]	$E_{min}$ [lx]	$E_{max}$ [lx]	u0	$E_{min} / E_{max}$
11	1.95	23	0.173	0.084

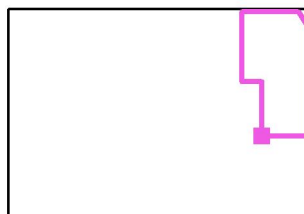
## Exterior Scene / Calculation Surface - Area 1 / Value Chart (E, Perpendicular)



Values in Lux, Scale 1 : 743

Not all calculated values could be displayed.

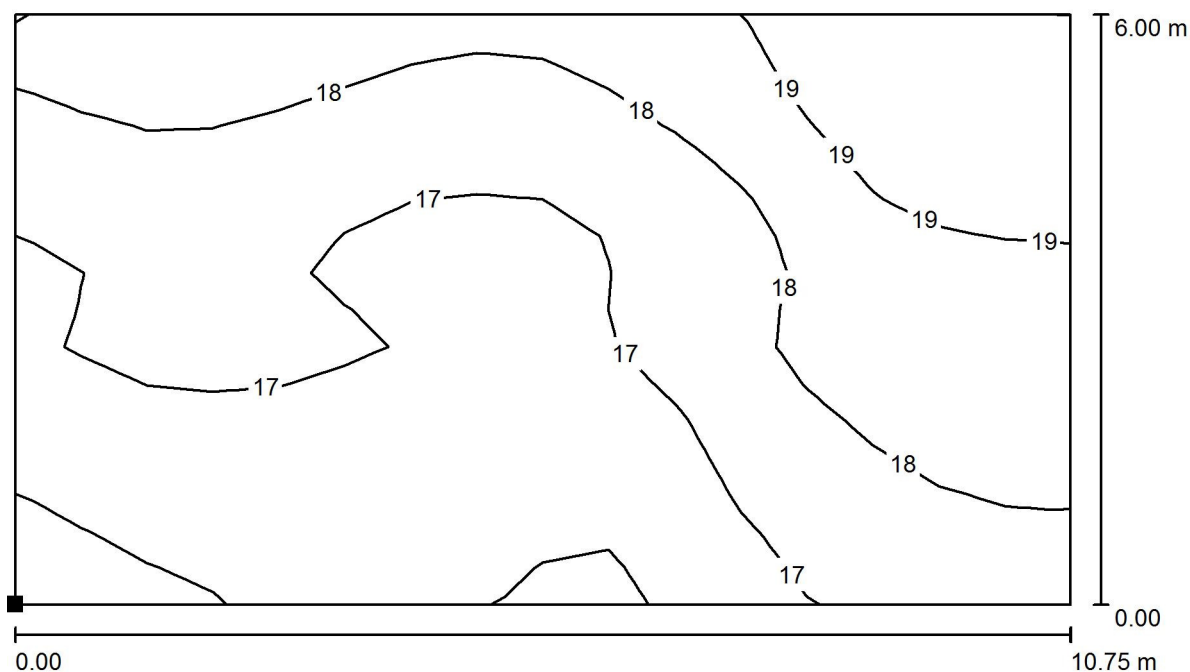
Position of surface in external scene:  
Marked point:  
(192.979 m, 63.018 m, 0.750 m)



Grid: 128 x 128 Points

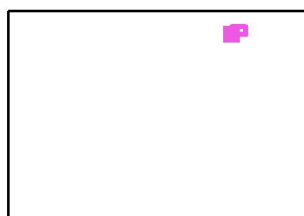
$E_{av}$ [lx]	$E_{min}$ [lx]	$E_{max}$ [lx]	$u_0$	$E_{min} / E_{max}$
11	1.95	23	0.173	0.084

### Exterior Scene / Calculation Surface - Area 1 Disabled / Isolines (E, Perpendicular)



Values in Lux, Scale 1 : 77

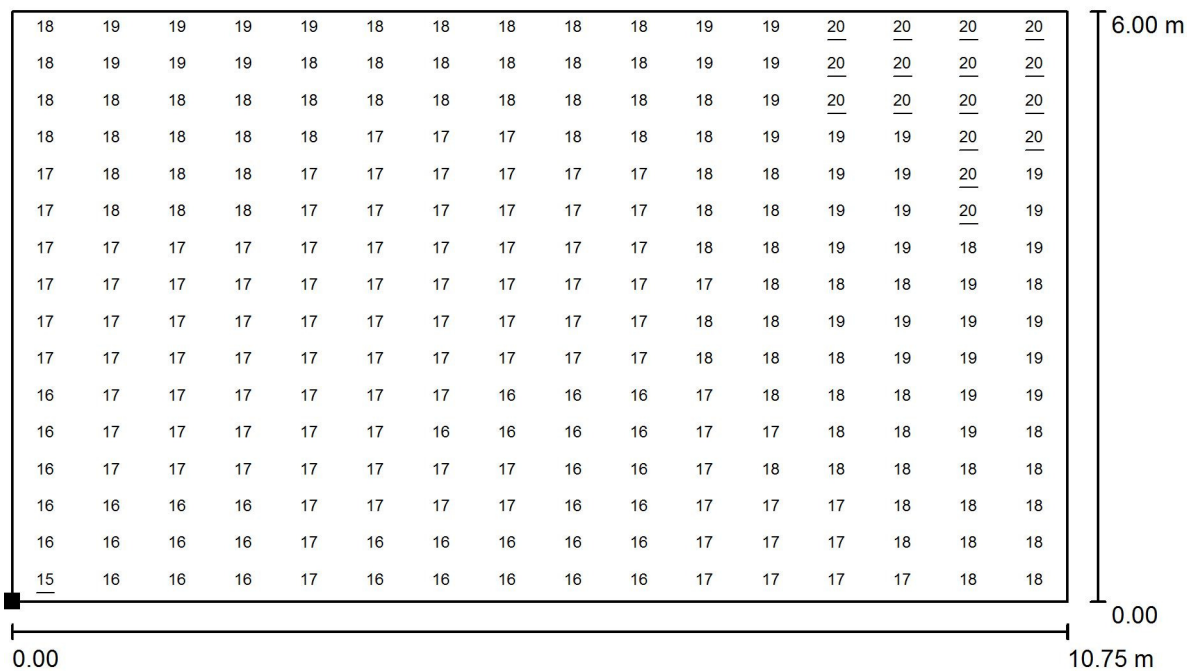
Position of surface in external scene:  
 Marked point:  
 (169.997 m, 142.000 m, 0.750 m)



Grid: 16 x 16 Points

$E_{av}$ [lx]	$E_{min}$ [lx]	$E_{max}$ [lx]	u0	$E_{min} / E_{max}$
18	15	20	0.879	0.777

## Exterior Scene / Calculation Surface - Area 1 Disabled / Value Chart (E, Perpendicular)



Values in Lux, Scale 1 : 77

Position of surface in external scene:  
 Marked point:  
 (169.997 m, 142.000 m, 0.750 m)



Grid: 16 x 16 Points

$E_{av}$  [lx]  
18

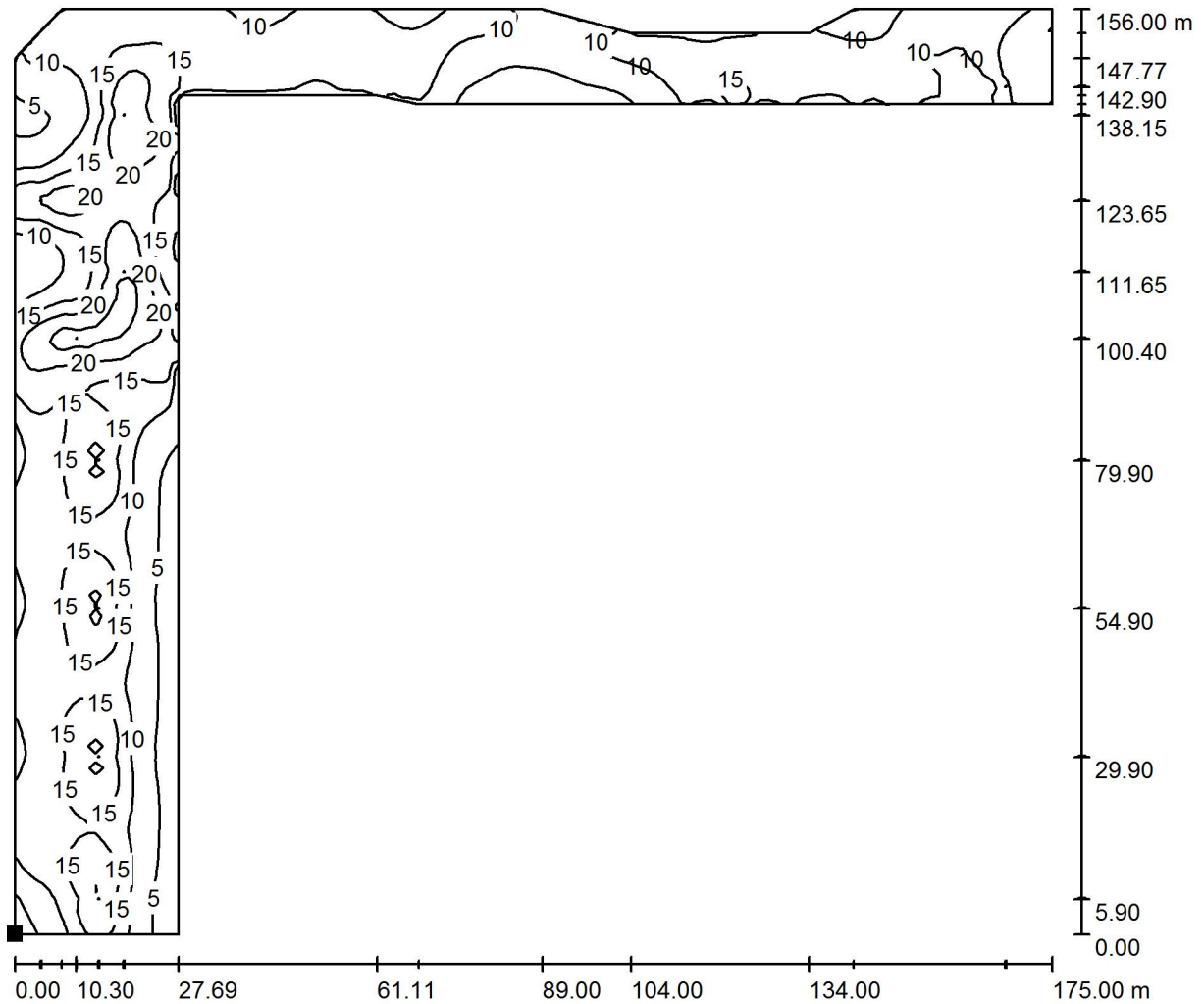
$E_{min}$  [lx]  
15

$E_{max}$  [lx]  
20

$u_0$   
0.879

$E_{min} / E_{max}$   
0.777

### Exterior Scene / Calculation Surface - Area 2 / Isolines (E, Perpendicular)

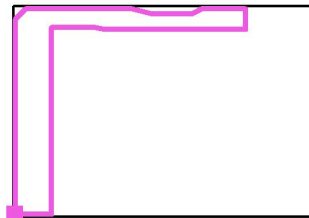


Values in Lux, Scale 1 : 1252

Position of surface in external scene:

Marked point:

(1.600 m, 2.000 m, 0.750 m)



Grid: 128 x 128 Points

$E_{av}$  [lx]  
13

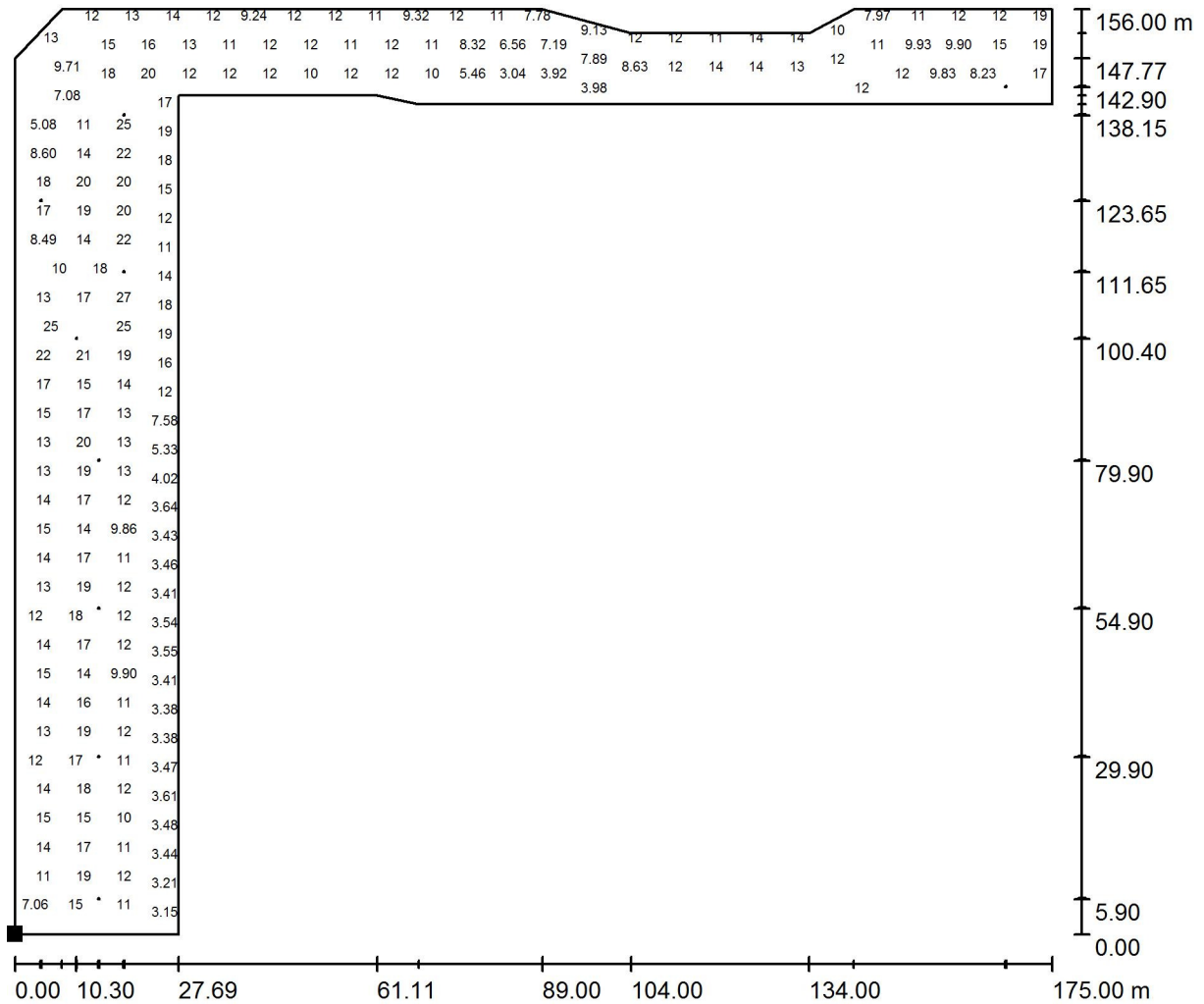
$E_{min}$  [lx]  
1.28

$E_{max}$  [lx]  
28

$u_0$   
0.101

$E_{min} / E_{max}$   
0.045

## Exterior Scene / Calculation Surface - Area 2 / Value Chart (E, Perpendicular)



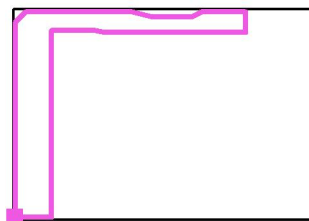
Values in Lux, Scale 1 : 1252

Not all calculated values could be displayed.

Position of surface in external scene:

Marked point:

(1.600 m, 2.000 m, 0.750 m)



Grid: 128 x 128 Points

$E_{av}$  [lx]  
13

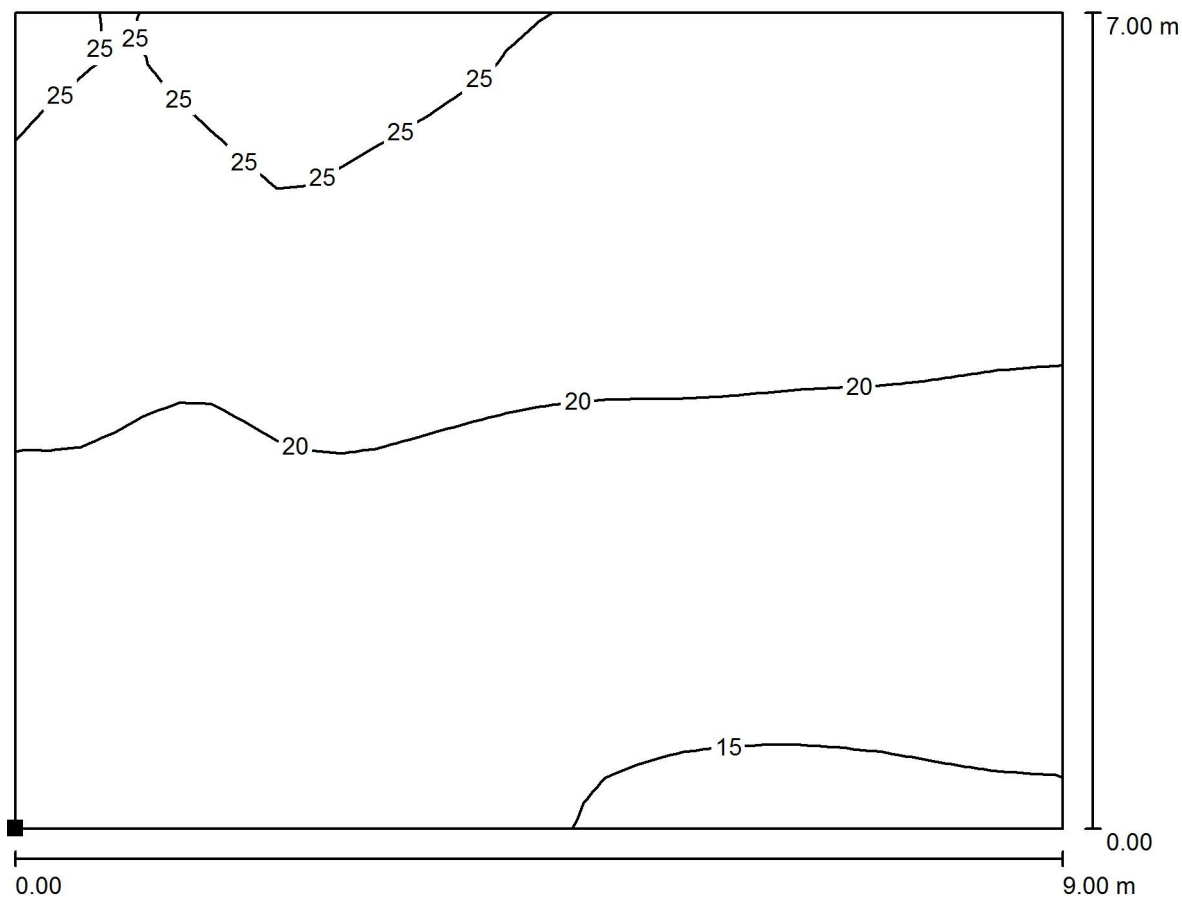
$E_{min}$  [lx]  
1.28

$E_{max}$  [lx]  
28

u0  
0.101

$E_{min} / E_{max}$   
0.045

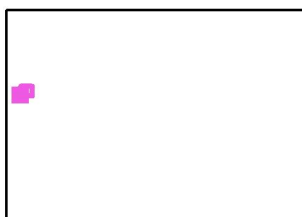
## Exterior Scene / Calculation Surface - Area 2 Disabled / Isolines (E, Perpendicular)



Values in Lux, Scale 1 : 65

Position of surface in external scene:

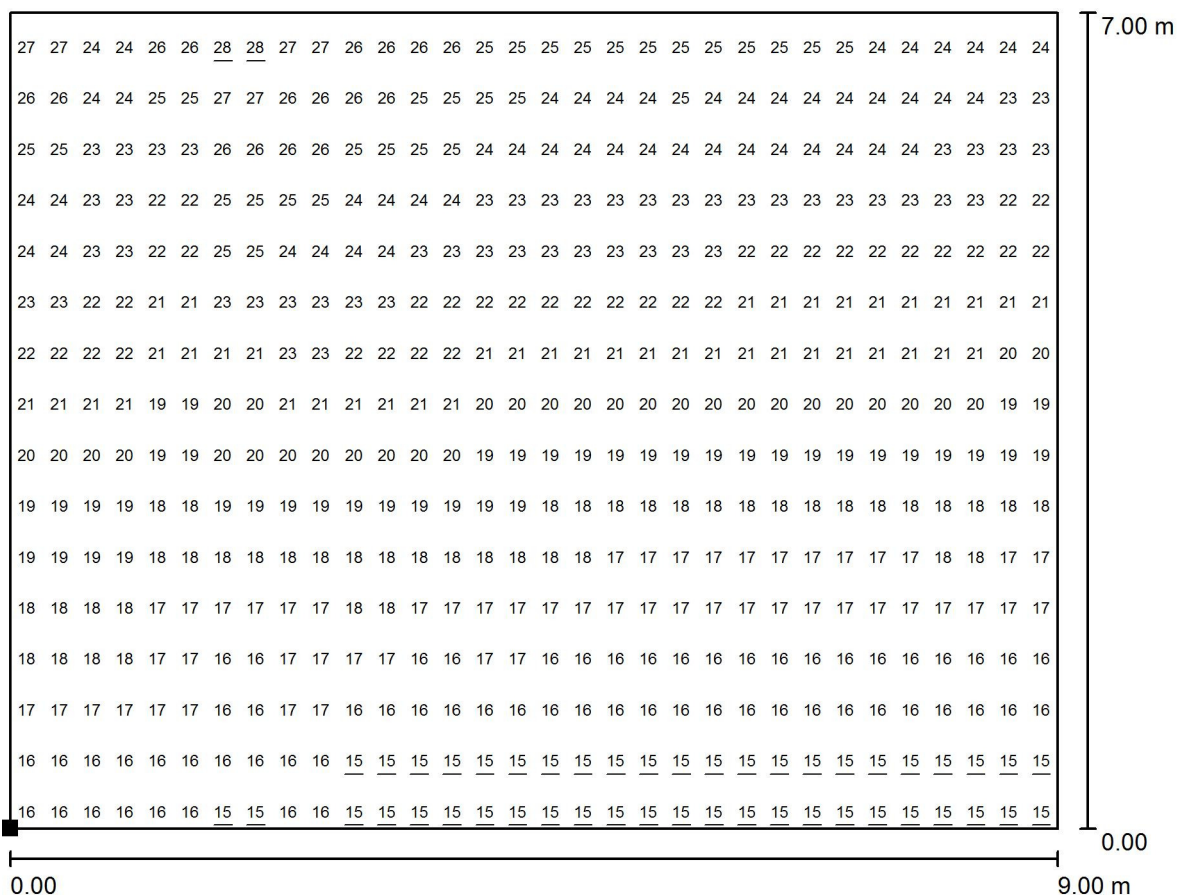
Marked point:  
(11.000 m, 95.000 m, 0.750 m)



Grid: 32 x 32 Points

$E_{av}$ [lx]	$E_{min}$ [lx]	$E_{max}$ [lx]	$u0$	$E_{min} / E_{max}$
20	15	28	0.729	0.528

## Exterior Scene / Calculation Surface - Area 2 Disabled / Value Chart (E, Perpendicular)



Values in Lux, Scale 1 : 65

Not all calculated values could be displayed.

Position of surface in external scene:

Marked point:  
(11.000 m, 95.000 m, 0.750 m)



Grid: 32 x 32 Points

$E_{av}$  [lx]  
20

$E_{min}$  [lx]  
15

$E_{max}$  [lx]  
28

$u_0$   
0.729

$E_{min} / E_{max}$   
0.528