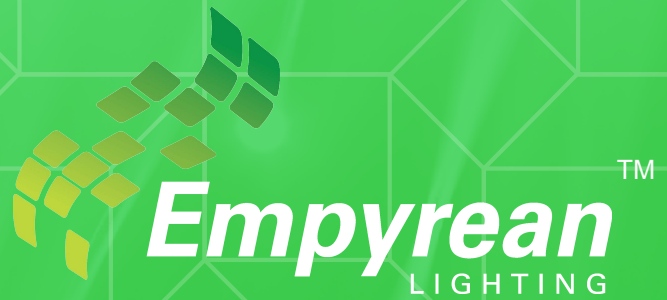


DIALUX REPORT



FILTRATION FACILITY

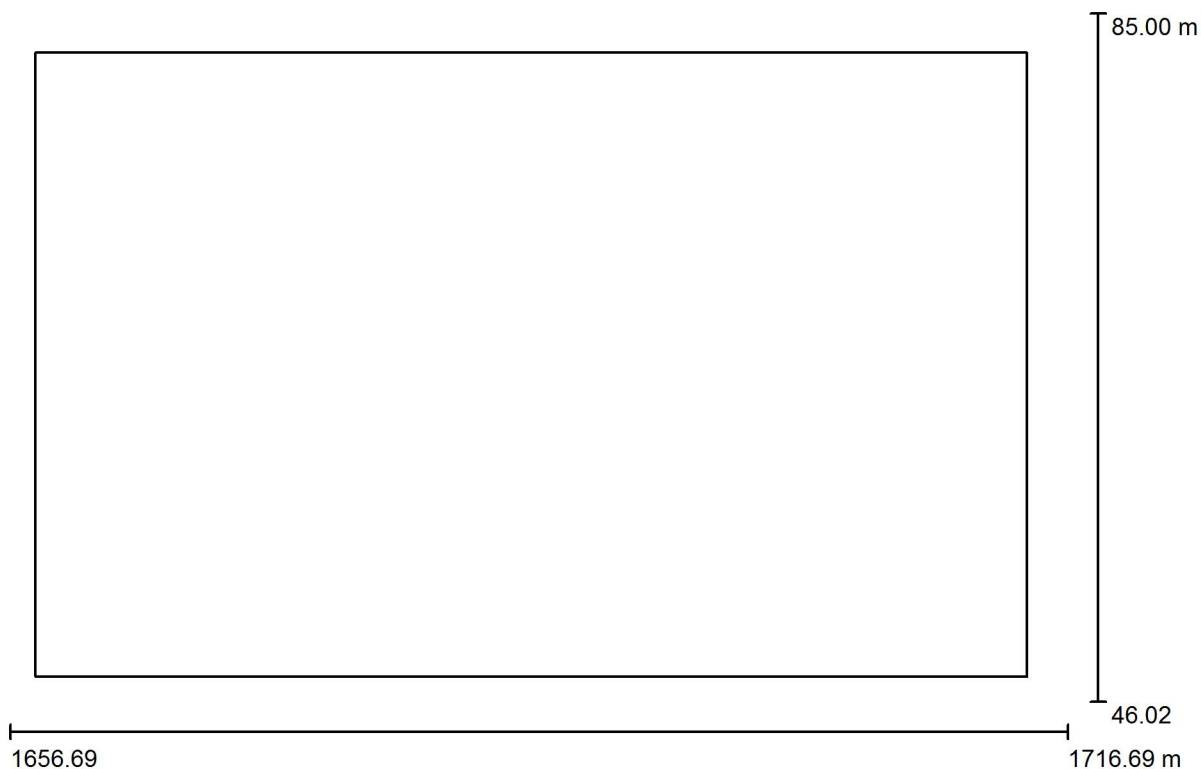
AndromedaXPB Flood, Linear & Park Range

- Ground flood lights mounted at 4m
- Feeder level lights mounted at 1.25m chains with hook at height of 4.75m
- Wash stations with green 21W Linear LED's suspending on chain to be 3m from floor or wall.

Table of contents

Project Cover	1
Table of contents	2
Exterior Scene - FBS001 Ground Floor & Feeder Floor	
Planning data	3
Luminaire parts list	4
Luminaires (layout plan)	5
3D Rendering	6
False Colour Rendering	7
Exterior Surfaces	
Calculation Surface - FBS001 Ground Floor	
Isolines (E, Perpendicular)	8
Value Chart (E, Perpendicular)	9
Calculation Surface - FBS001 Ground Floor Work Areas	
Isolines (E, Perpendicular)	10
Value Chart (E, Perpendicular)	11
Calculation Surface - FBS001 Feeder Floor	
Isolines (E, Perpendicular)	12
Value Chart (E, Perpendicular)	13

Exterior Scene - FBS001 Ground Floor & Feeder Floor / Planning data



Maintenance factor: 0.70, ULR (Upward Light Ratio): 0.0%

Scale 1:429

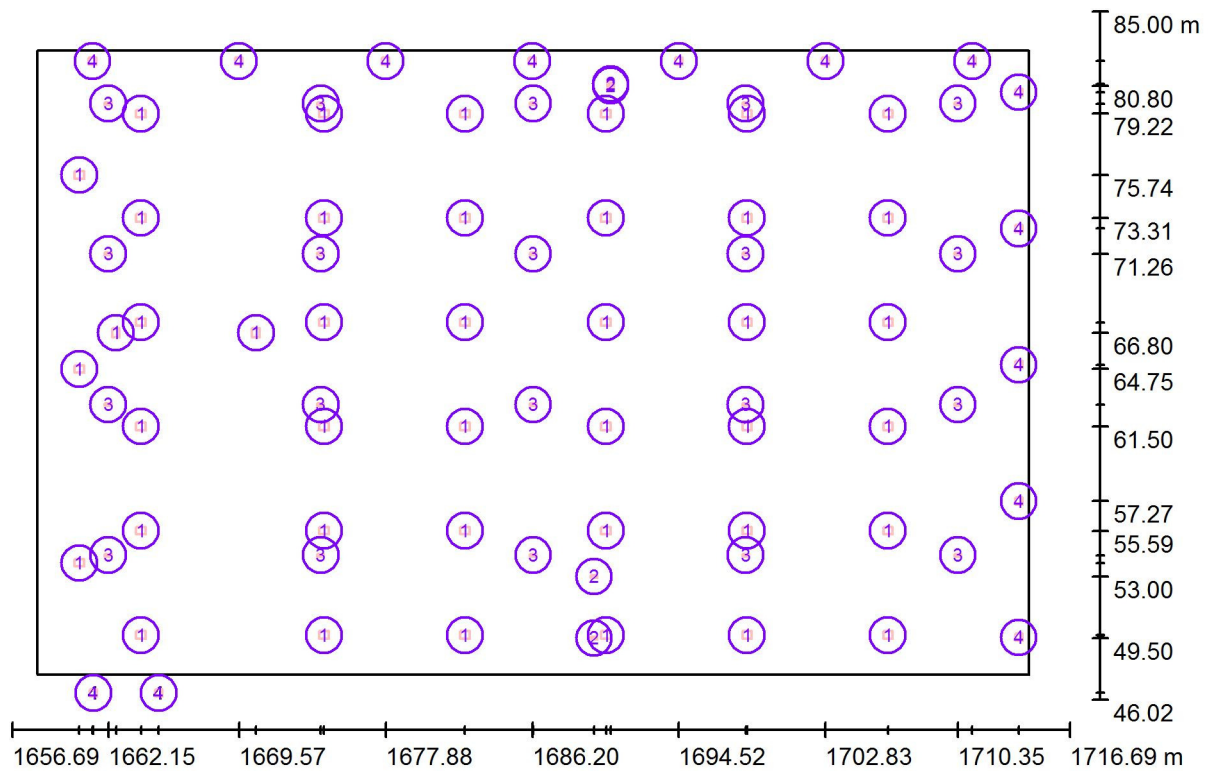
Luminaire Parts List

No.	Pieces	Designation (Correction Factor)	Φ (Luminaire) [lm]	Φ (Lamps) [lm]	P [W]
1	41	Empyrean Lighting AndromedaXPB-Flood-146W-Lens81 (1.000)	16060	16060	146.0
2	4	Empyrean Lighting AndromedaXPB-GLinear-21W-Lens27 (1.000)	1008	1008	21.0
3	20	Empyrean Lighting AndromedaXPB-Linear-27W-Lens50 (1.000)	2970	2970	27.0
4	14	Empyrean Lighting AndromedaXPB-Park-30W-Lens27 (1.000)	3300	3300	30.0
Total:			768077	768092	7030.0

Exterior Scene - FBS001 Ground Floor & Feeder Floor / Luminaire parts list

<p>41 Pieces</p> <p>Empyrean Lighting AndromedaXPB-Flood-146W-Lens81 Article No.:</p> <p>Luminous flux (Luminaire): 16060 lm Luminous flux (Lamps): 16060 lm Luminaire Wattage: 146.0 W Luminaire classification according to CIE: 100 CIE flux code: 59 93 98 100 100 Fitting: 1 x Nichia 219B (Correction Factor 1.000).</p>	<p>See our luminaire catalog for an image of the luminaire.</p>	
<p>4 Pieces</p> <p>Empyrean Lighting AndromedaXPB-GLinear-21W-Lens27 Article No.:</p> <p>Luminous flux (Luminaire): 1008 lm Luminous flux (Lamps): 1008 lm Luminaire Wattage: 21.0 W Luminaire classification according to CIE: 100 CIE flux code: 28 64 94 100 100 Fitting: 1 x Green LEDs (Correction Factor 1.000).</p>	<p>See our luminaire catalog for an image of the luminaire.</p>	
<p>20 Pieces</p> <p>Empyrean Lighting AndromedaXPB-Linear-27W-Lens50 Article No.:</p> <p>Luminous flux (Luminaire): 2970 lm Luminous flux (Lamps): 2970 lm Luminaire Wattage: 27.0 W Luminaire classification according to CIE: 100 CIE flux code: 61 91 98 100 100 Fitting: 1 x Nichia 219B (Correction Factor 1.000).</p>	<p>See our luminaire catalog for an image of the luminaire.</p>	
<p>14 Pieces</p> <p>Empyrean Lighting AndromedaXPB-Park-30W-Lens27 Article No.:</p> <p>Luminous flux (Luminaire): 3300 lm Luminous flux (Lamps): 3300 lm Luminaire Wattage: 30.0 W Luminaire classification according to CIE: 100 CIE flux code: 28 64 94 100 100 Fitting: 1 x Nichia 219B (Correction Factor 1.000).</p>	<p>See our luminaire catalog for an image of the luminaire.</p>	

Exterior Scene - FBS001 Ground Floor & Feeder Floor / Luminaires (layout plan)

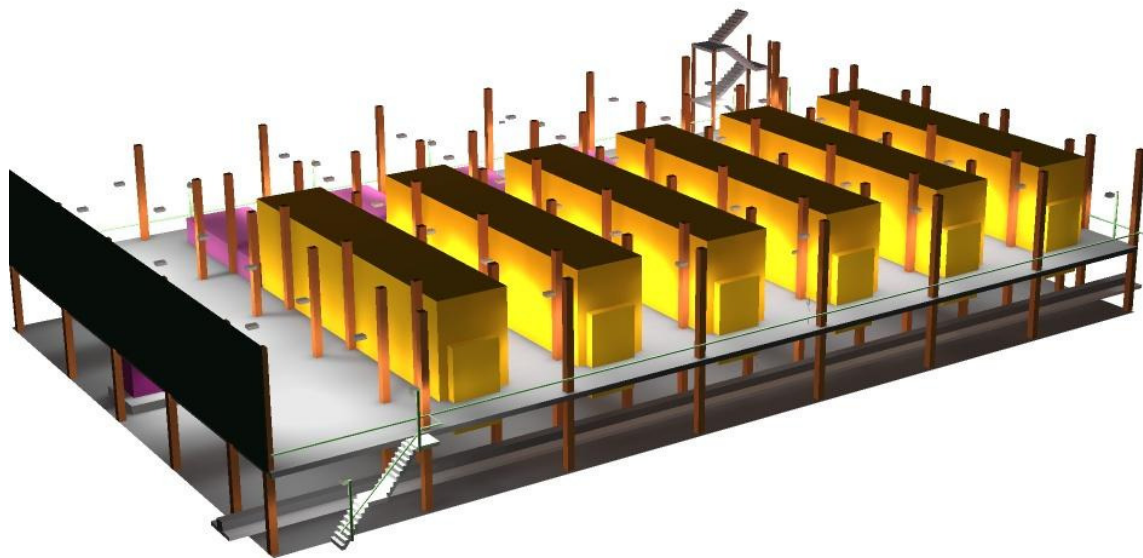


Scale 1 : 429

Luminaire Parts List

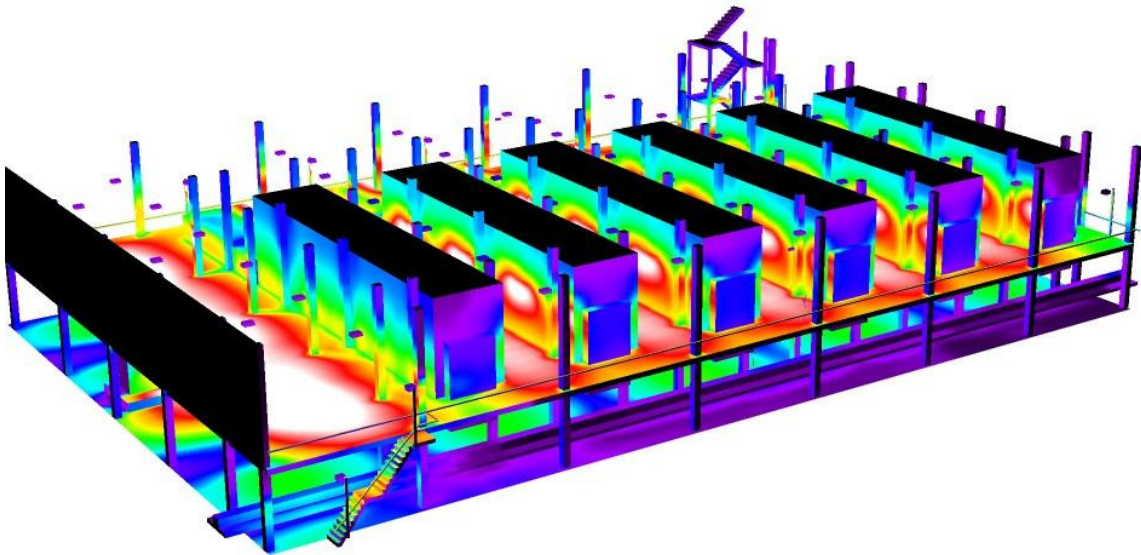
No.	Pieces	Designation
1	41	Empyrean Lighting AndromedaXPB-Flood-146W-Lens81
2	4	Empyrean Lighting AndromedaXPB-GLinear-21W-Lens27
3	20	Empyrean Lighting AndromedaXPB-Linear-27W-Lens50
4	14	Empyrean Lighting AndromedaXPB-Park-30W-Lens27

Exterior Scene - FBS001 Ground Floor & Feeder Floor / 3D Rendering





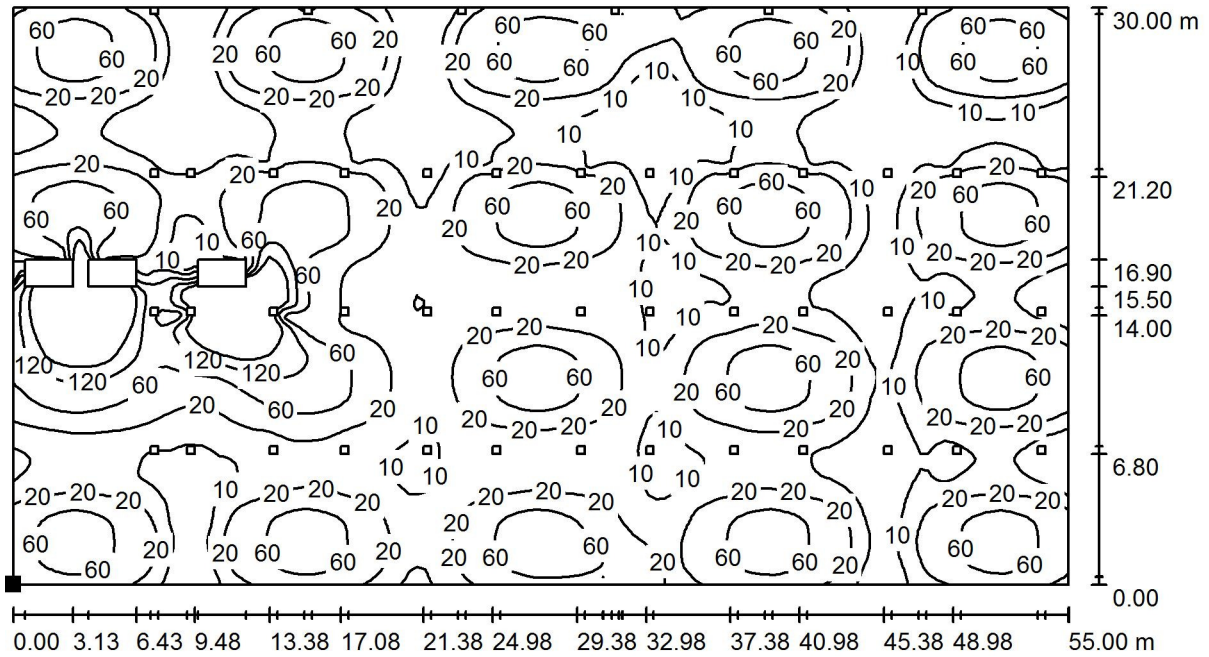
Exterior Scene - FBS001 Ground Floor & Feeder Floor / False Colour Rendering



1 5 15 30 60 100 150 200 300

lx

Exterior Scene - FBS001 Ground Floor & Feeder Floor / Calculation Surface - FBS001 Ground Floor / Isolines (E, Perpendicular)



Values in Lux, Scale 1 : 394

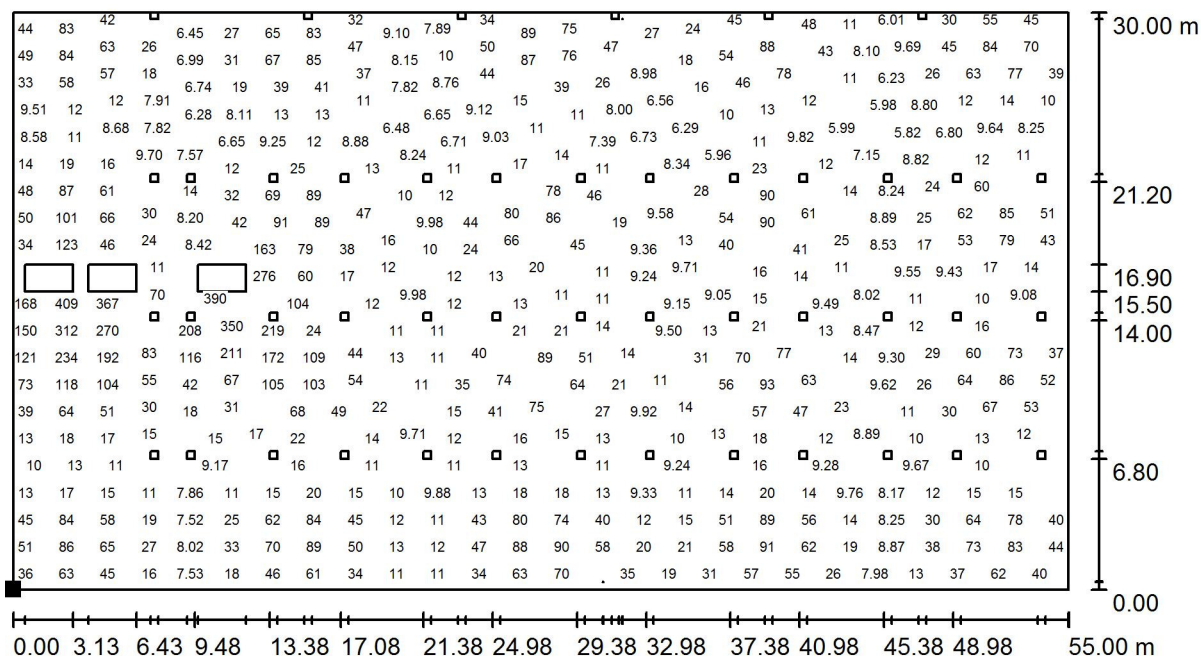
Position of surface in external scene:
Marked point:
(1658.925 m, 52.000 m, 0.750 m)



Grid: 128 x 128 Points

E_{av} [lx]	E_{min} [lx]	E_{max} [lx]	u_0	E_{min} / E_{max}
38	3.25	458	0.085	0.007

Exterior Scene - FBS001 Ground Floor & Feeder Floor / Calculation Surface - FBS001 Ground Floor / Value Chart (E, Perpendicular)



Values in Lux, Scale 1 : 394

Not all calculated values could be displayed.

Position of surface in external scene:
Marked point:
(1658.925 m, 52.000 m, 0.750 m)



Grid: 128 x 128 Points

E_{av} [lx]
38

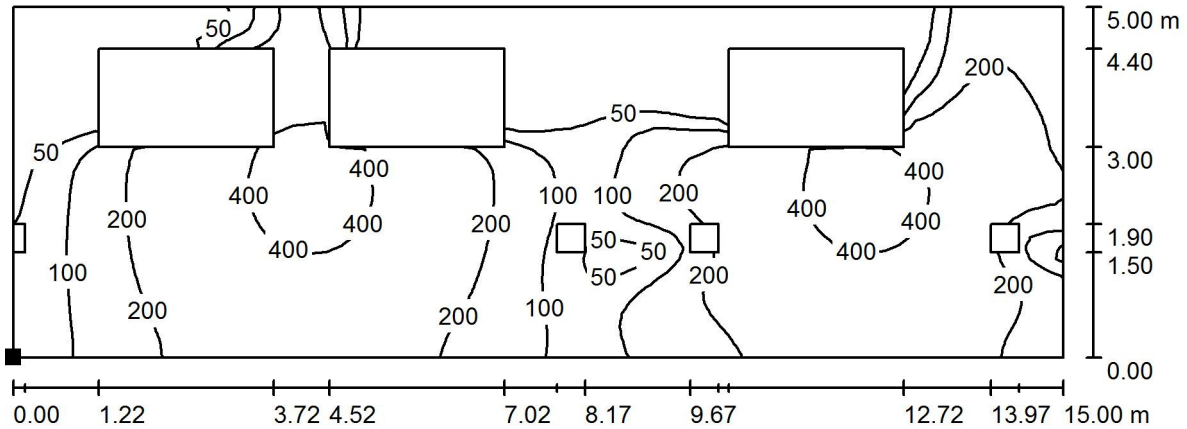
E_{min} [lx]
3.25

E_{max} [lx]
458

u_0
0.085

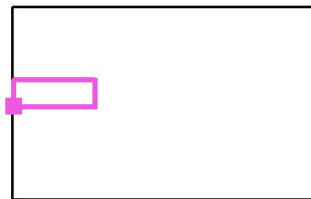
E_{min} / E_{max}
0.007

Exterior Scene - FBS001 Ground Floor & Feeder Floor / Calculation Surface - FBS001 Ground Floor Work Areas / Isolines (E, Perpendicular)



Values in Lux, Scale 1 : 108

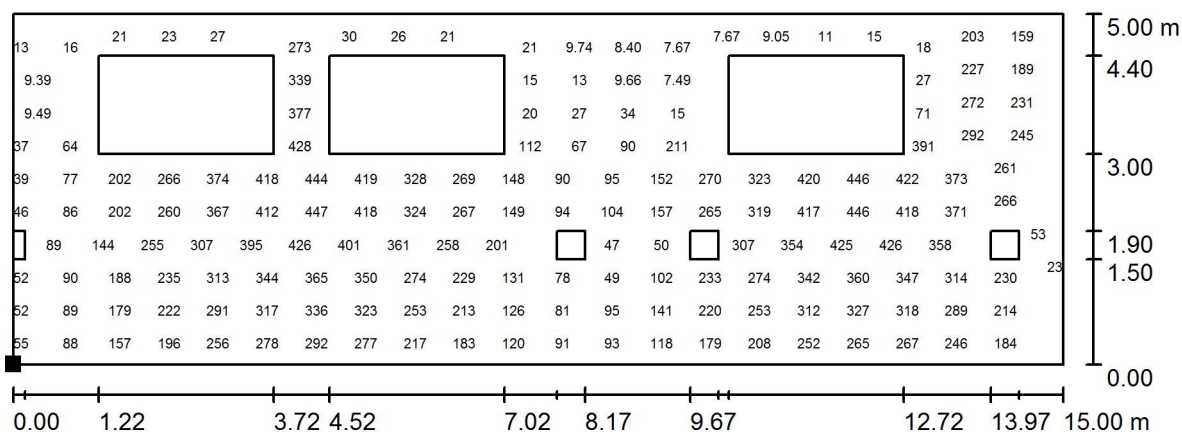
Position of surface in external scene:
Marked point:
(1658.327 m, 64.497 m, 0.750 m)



Grid: 64 x 32 Points

E_{av} [lx]	E_{min} [lx]	E_{max} [lx]	u0	E_{min} / E_{max}
195	6.69	453	0.034	0.015

Exterior Scene - FBS001 Ground Floor & Feeder Floor / Calculation Surface - FBS001 Ground Floor Work Areas / Value Chart (E, Perpendicular)



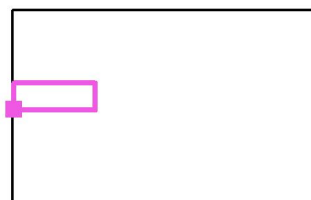
Values in Lux, Scale 1 : 108

Not all calculated values could be displayed.

Position of surface in external scene:

Marked point:

(1658.327 m, 64.497 m, 0.750 m)



Grid: 64 x 32 Points

E_{av} [lx]
195

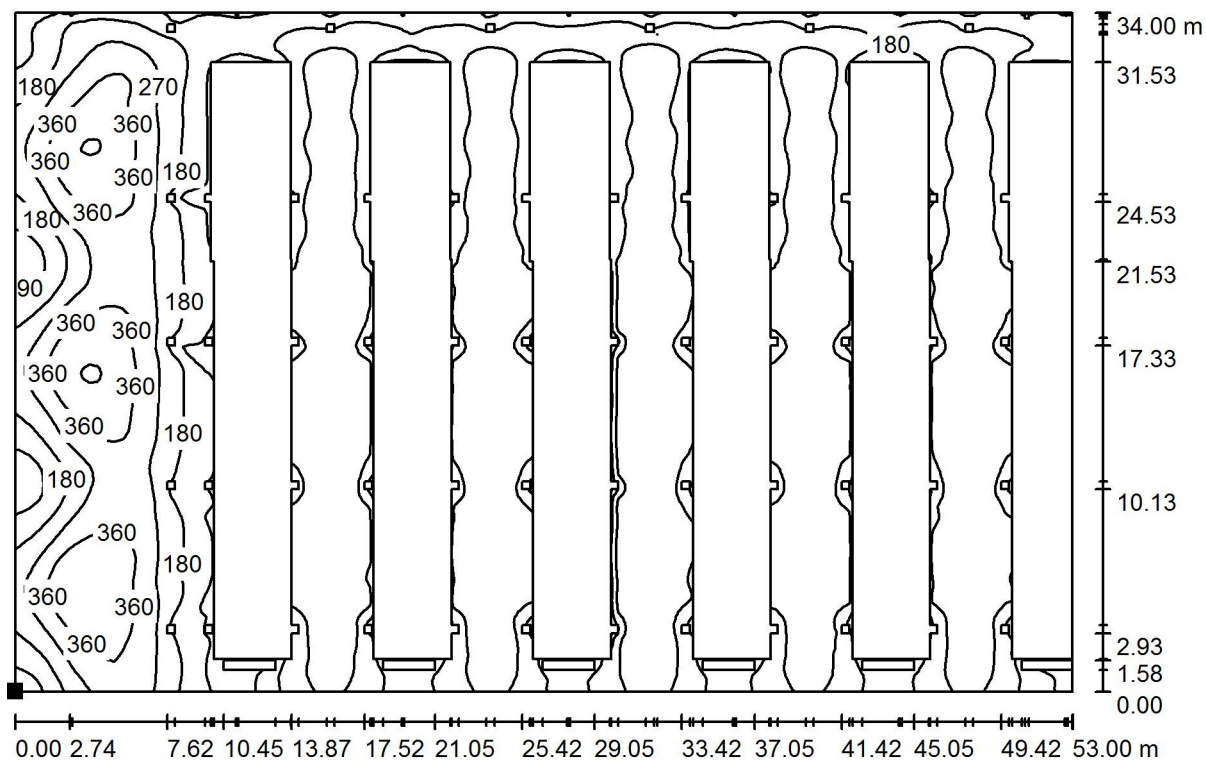
E_{min} [lx]
6.69

E_{max} [lx]
453

u_0
0.034

E_{min} / E_{max}
0.015

Exterior Scene - FBS001 Ground Floor & Feeder Floor / Calculation Surface - FBS001 Feeder Floor / Isolines (E, Perpendicular)



Values in Lux, Scale 1 : 379

Position of surface in external scene:

Marked point:
(1658.481 m, 48.674 m, 4.750 m)



Grid: 128 x 128 Points

E_{av} [lx]
268

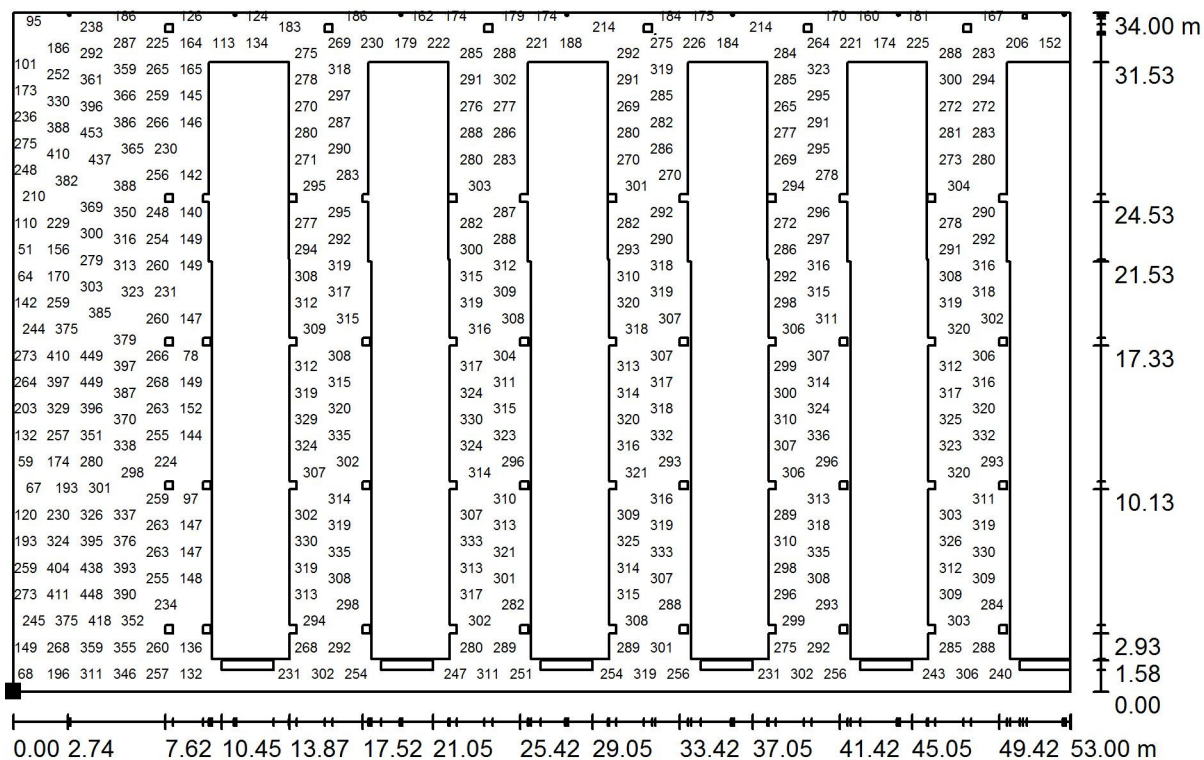
E_{min} [lx]
21

E_{max} [lx]
459

u_0
0.077

E_{min} / E_{max}
0.045

Exterior Scene - FBS001 Ground Floor & Feeder Floor / Calculation Surface - FBS001 Feeder Floor / Value Chart (E, Perpendicular)



Not all calculated values could be displayed.

Position of surface in external scene:

Marked point:

(1658.481 m, 48.674 m, 4.750 m)



Grid: 128 x 128 Points

E_{av} [lx]
268

E_{min} [lx]
21

E_{max} [lx]
459

u_0
0.077

E_{min} / E_{max}
0.045