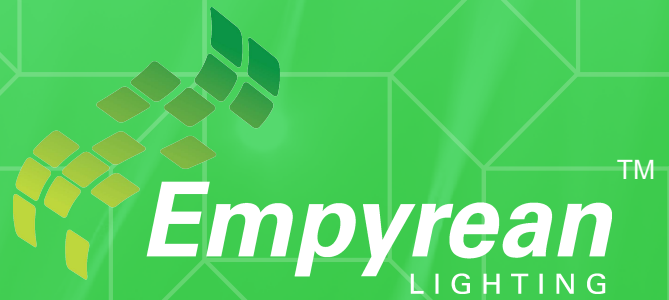


# DIALUX REPORT



## LECTURE THEATRE

14 x Cyllene LED Oyster Lights 24W  
2 x Nebula Multi LED Luminaires 40W  
48 x Andromeda XPB 67W LED Luminaires

- Room size 18m x 18m

Empyrean Lighting  
 Capital One Building Lv 2 11/9 Capital Place  
 Birtinya QLD 4575 AUSTRALIA

Operator Brock Shakespeare  
 Telephone +61 7 5437 7270  
 Fax  
 e-Mail brock@empyreanlighting.com

## Table of contents

Project Cover	1
Table of contents	2
<b>Room - Lecture Theatre</b>	
Luminaire parts list	3
3D Rendering	4
False Colour Rendering	5
<b>Room Surfaces</b>	
<b>Calculation Surface - Theatre Floor</b>	
Isolines (E, Perpendicular)	6
Greyscale (E, Perpendicular)	7
<b>Calculation Surface - Mezzaine Theatre</b>	
Isolines (E, Perpendicular)	8
Greyscale (E, Perpendicular)	9
<b>Room - Entrance &amp; Foyer</b>	
Summary	10
Luminaire parts list	11
3D Rendering	12
False Colour Rendering	13
<b>Room Surfaces</b>	
<b>Calculation Surface - Inside Foyer</b>	
Isolines (E, Perpendicular)	14
Greyscale (E, Perpendicular)	15

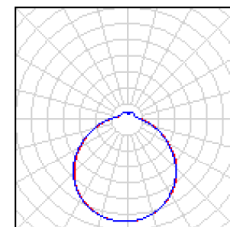
Empyrean Lighting  
 Capital One Building Lv 2 11/9 Capital Place  
 Birtinya QLD 4575 AUSTRALIA

Operator Brock Shakespeare  
 Telephone +61 7 5437 7270  
 Fax  
 e-Mail brock@empyreanlighting.com

## Room - Lecture Theatre / Luminaire parts list

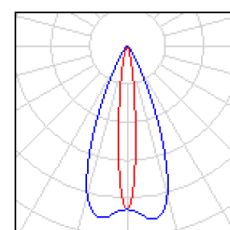
14 Pieces    Empyrean Lighting Cyllene-W24WN-x350  
 Article No.:  
 Luminous flux (Luminaire): 1700 lm  
 Luminous flux (Lamps): 1700 lm  
 Luminaire Wattage: 24.0 W  
 Luminaire classification according to CIE: 85  
 CIE flux code: 42 71 89 85 100  
 Fitting: 1 x User defined (Correction Factor 1.000).

See our luminaire catalog for an image of the luminaire.



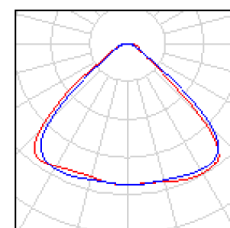
2 Pieces    Empyrean Lighting NebulaXP-M40W-40-CW  
 Article No.:  
 Luminous flux (Luminaire): 3198 lm  
 Luminous flux (Lamps): 3200 lm  
 Luminaire Wattage: 40.0 W  
 Luminaire classification according to CIE: 100  
 CIE flux code: 94 98 100 100 104  
 Fitting: 1 x Wall Washer (Correction Factor 1.000).

See our luminaire catalog for an image of the luminaire.



48 Pieces    Empyrean Lighting led AndromedaXPB-67W-Lens81  
 Article No.: led  
 Luminous flux (Luminaire): 7370 lm  
 Luminous flux (Lamps): 7370 lm  
 Luminaire Wattage: 67.0 W  
 Luminaire classification according to CIE: 100  
 CIE flux code: 59 93 98 100 100  
 Fitting: 1 x Nichia 219B (Correction Factor 1.000).

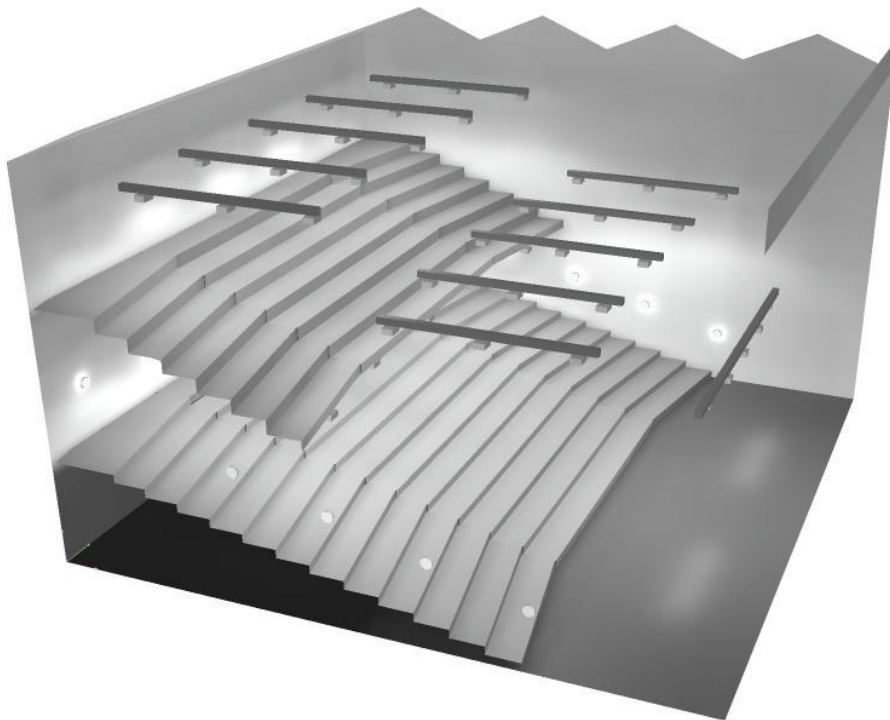
See our luminaire catalog for an image of the luminaire.



Empyrean Lighting  
Capital One Building Lv 2 11/9 Capital Place  
Birtinya QLD 4575 AUSTRALIA

Operator Brock Shakespeare  
Telephone +61 7 5437 7270  
Fax  
e-Mail [brock@empyreanlighting.com](mailto:brock@empyreanlighting.com)

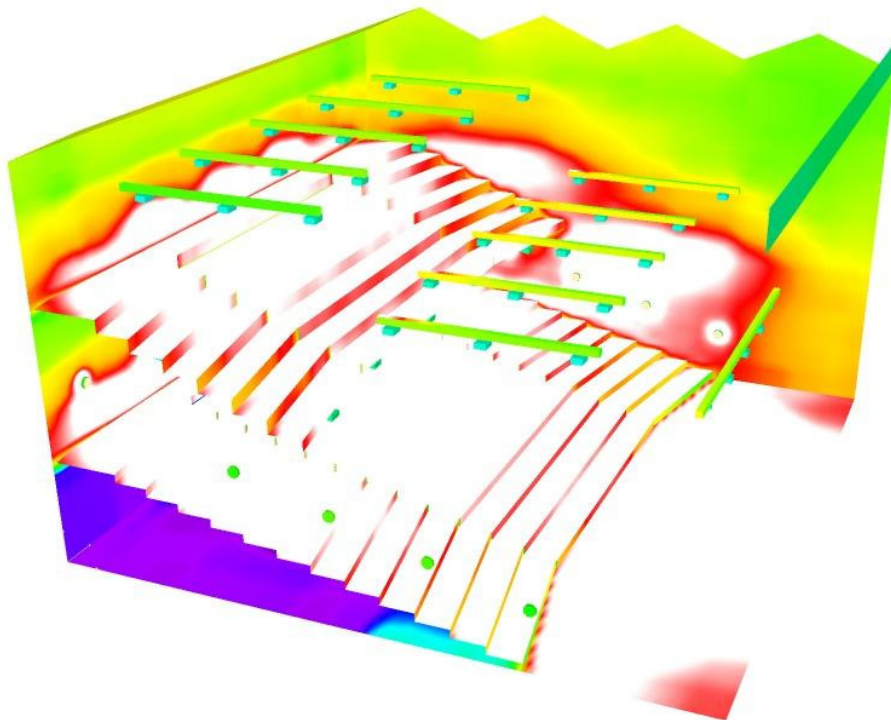
## Room - Lecture Theatre / 3D Rendering



Empyrean Lighting  
Capital One Building Lv 2 11/9 Capital Place  
Birtinya QLD 4575 AUSTRALIA

Operator Brock Shakespeare  
Telephone +61 7 5437 7270  
Fax  
e-Mail brock@empyreanlighting.com

## Room - Lecture Theatre / False Colour Rendering

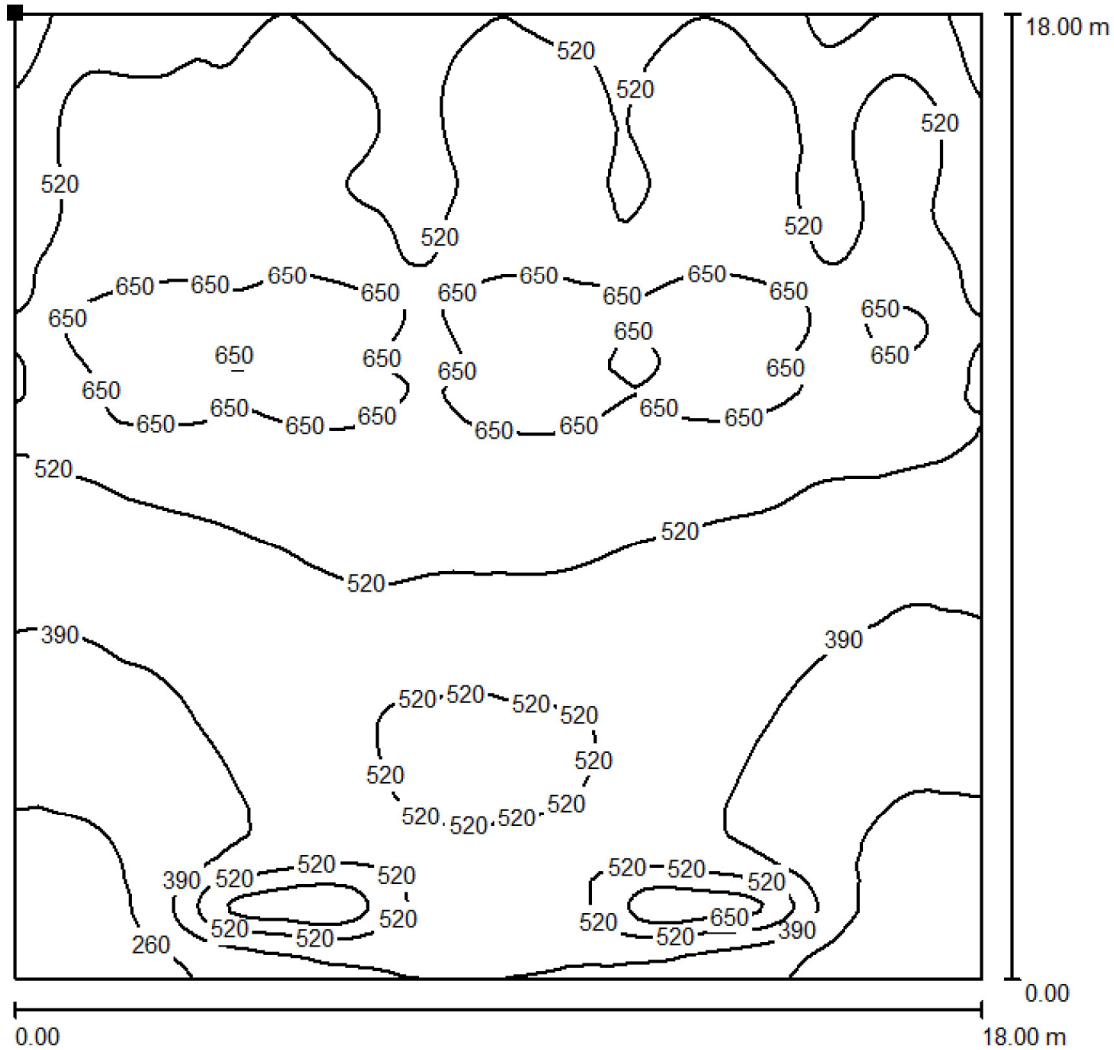


1      5      10      15      40      80      120      150      200      lx

Empyrean Lighting  
 Capital One Building Lv 2 11/9 Capital Place  
 Birtinya QLD 4575 AUSTRALIA

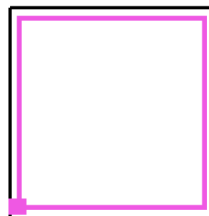
Operator Brock Shakespeare  
 Telephone +61 7 5437 7270  
 Fax  
 e-Mail brock@empyreanlighting.com

## Room - Lecture Theatre / Calculation Surface - Theatre Floor / Isolines (E, Perpendicular)



Values in Lux, Scale 1 : 141

Position of surface in room:  
 Marked point:  
 (0.697 m, 1.000 m, 3.871 m)



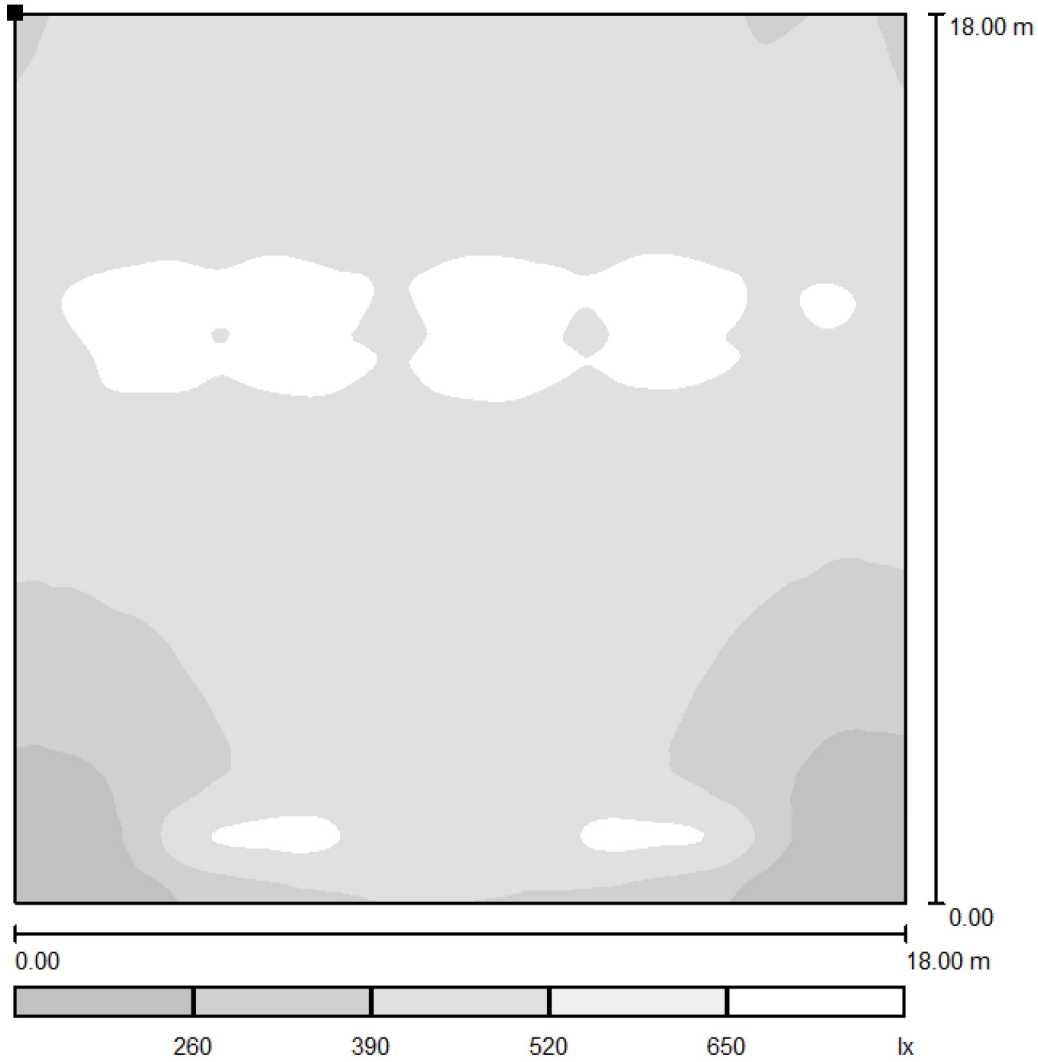
Grid: 128 x 128 Points

$E_{av}$ [lx]	$E_{min}$ [lx]	$E_{max}$ [lx]	$u_0$	$E_{min} / E_{max}$
503	146	782	0.290	0.186

Empyrean Lighting  
 Capital One Building Lv 2 11/9 Capital Place  
 Birtinya QLD 4575 AUSTRALIA

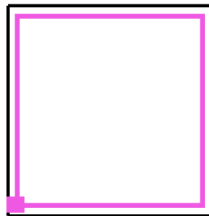
Operator Brock Shakespeare  
 Telephone +61 7 5437 7270  
 Fax  
 e-Mail brock@empyreanlighting.com

## Room - Lecture Theatre / Calculation Surface - Theatre Floor / Greyscale (E, Perpendicular)



Scale 1 : 153

Position of surface in room:  
 Marked point:  
 (0.697 m, 1.000 m, 3.871 m)



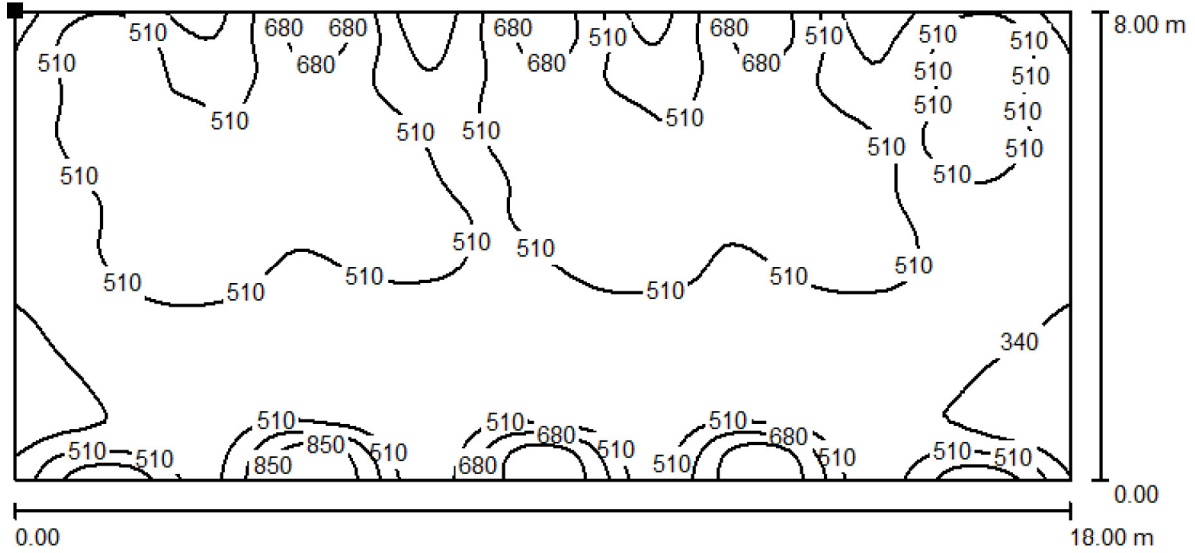
Grid: 128 x 128 Points

$E_{av}$ [lx]	$E_{min}$ [lx]	$E_{max}$ [lx]	$u_0$	$E_{min} / E_{max}$
503	146	782	0.290	0.186

Empyrean Lighting  
 Capital One Building Lv 2 11/9 Capital Place  
 Birtinya QLD 4575 AUSTRALIA

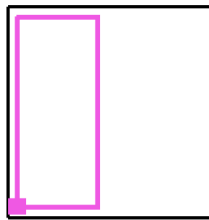
Operator Brock Shakespeare  
 Telephone +61 7 5437 7270  
 Fax  
 e-Mail brock@empyreanlighting.com

## Room - Lecture Theatre / Calculation Surface - Mezzaine Theatre / Isolines (E, Perpendicular)



Values in Lux, Scale 1 : 129

Position of surface in room:  
 Marked point:  
 (0.841 m, 1.000 m, 8.868 m)



Grid: 64 x 128 Points

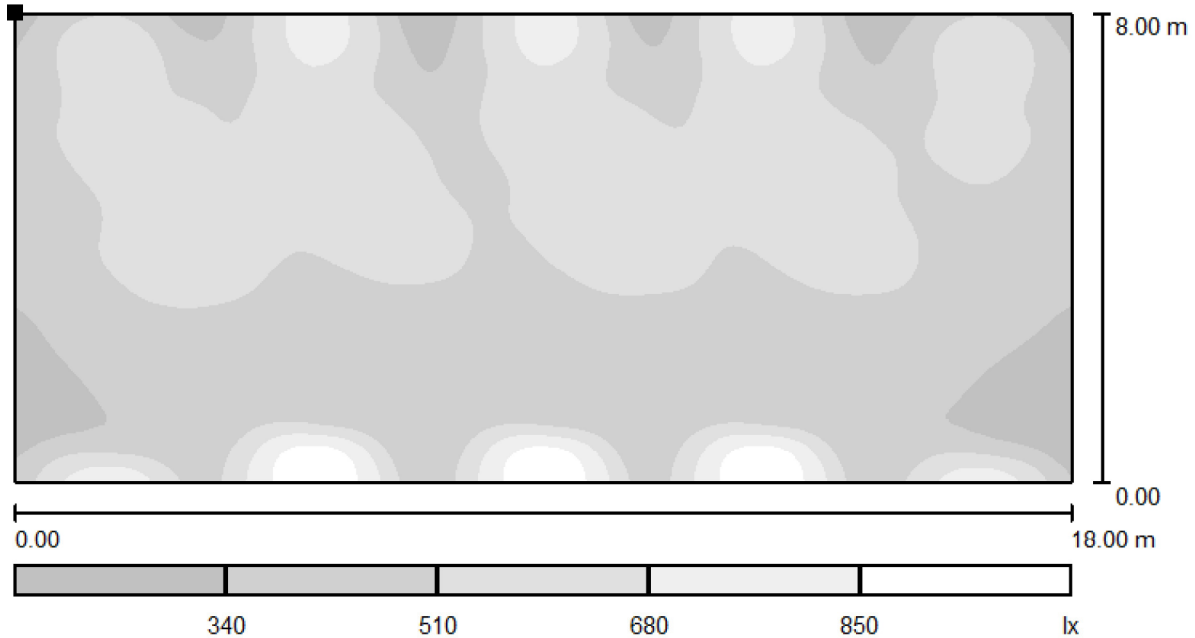
$E_{av}$ [lx]	$E_{min}$ [lx]	$E_{max}$ [lx]	u0	$E_{min} / E_{max}$
495	194	1024	0.393	0.190



Empyrean Lighting  
 Capital One Building Lv 2 11/9 Capital Place  
 Birtinya QLD 4575 AUSTRALIA

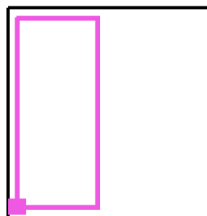
Operator Brock Shakespeare  
 Telephone +61 7 5437 7270  
 Fax  
 e-Mail brock@empyreanlighting.com

## Room - Lecture Theatre / Calculation Surface - Mezzaine Theatre / Greyscale (E, Perpendicular)



Scale 1 : 129

Position of surface in room:  
 Marked point:  
 (0.841 m, 1.000 m, 8.868 m)



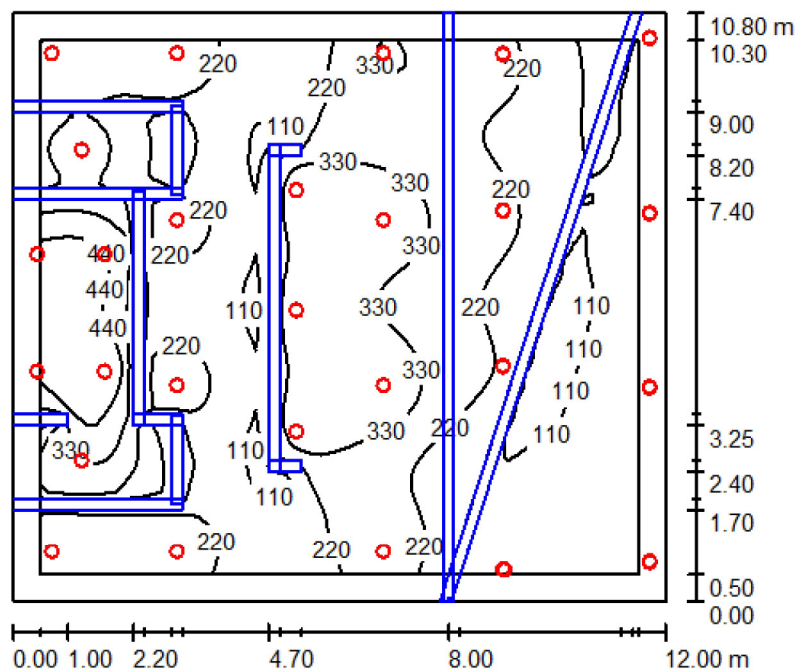
Grid: 64 x 128 Points

$E_{av}$ [lx]	$E_{min}$ [lx]	$E_{max}$ [lx]	$u0$	$E_{min} / E_{max}$
495	194	1024	0.393	0.190

Empyrean Lighting  
 Capital One Building Lv 2 11/9 Capital Place  
 Birtinya QLD 4575 AUSTRALIA

Operator Brock Shakespeare  
 Telephone +61 7 5437 7270  
 Fax  
 e-Mail brock@empyreanlighting.com

## Room - Entrance & Foyer / Summary



Height of Room: 5.000 m, Maintenance factor: 0.70

Values in Lux, Scale 1:139

Surface	$\rho$ [%]	$E_{av}$ [lx]	$E_{min}$ [lx]	$E_{max}$ [lx]	$u_0$
Workplane	/	234	45	560	0.192
Floor	20	175	15	398	0.084
Ceiling	70	0.97	0.58	3.31	0.594
Walls (5)	50	102	1.38	1947	/

### Workplane:

Height: 0.750 m  
 Grid: 64 x 64 Points  
 Boundary Zone: 0.500 m

Illuminance Quotient (according to LG7): Walls / Working Plane: - , Ceiling / Working Plane: - .

### Luminaire Parts List

No.	Pieces	Designation (Correction Factor)	$\Phi$ (Luminaire) [lm]	$\Phi$ (Lamps) [lm]	P [W]
1	27	Empyrean Lighting Vega-9x832C (1.000)	2447	2447	32.8
Total:			66073	66080	885.6

Specific connected load:  $6.83 \text{ W/m}^2 = 2.92 \text{ W/m}^2/100 \text{ lx}$  (Ground area:  $129.60 \text{ m}^2$ )

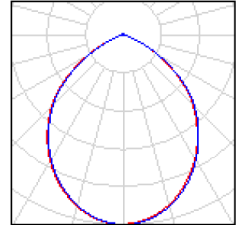
Empyrean Lighting  
Capital One Building Lv 2 11/9 Capital Place  
Birtinya QLD 4575 AUSTRALIA

Operator Brock Shakespeare  
Telephone +61 7 5437 7270  
Fax  
e-Mail brock@empyreanlighting.com

## Room - Entrance & Foyer / Luminaire parts list

27 Pieces    Empyrean Lighting Vega-9x832C  
Article No.:  
Luminous flux (Luminaire): 2447 lm  
Luminous flux (Lamps): 2447 lm  
Luminaire Wattage: 32.8 W  
Luminaire classification according to CIE: 100  
CIE flux code: 61 93 99 100 100  
Fitting: 1 x User defined (Correction Factor  
1.000).

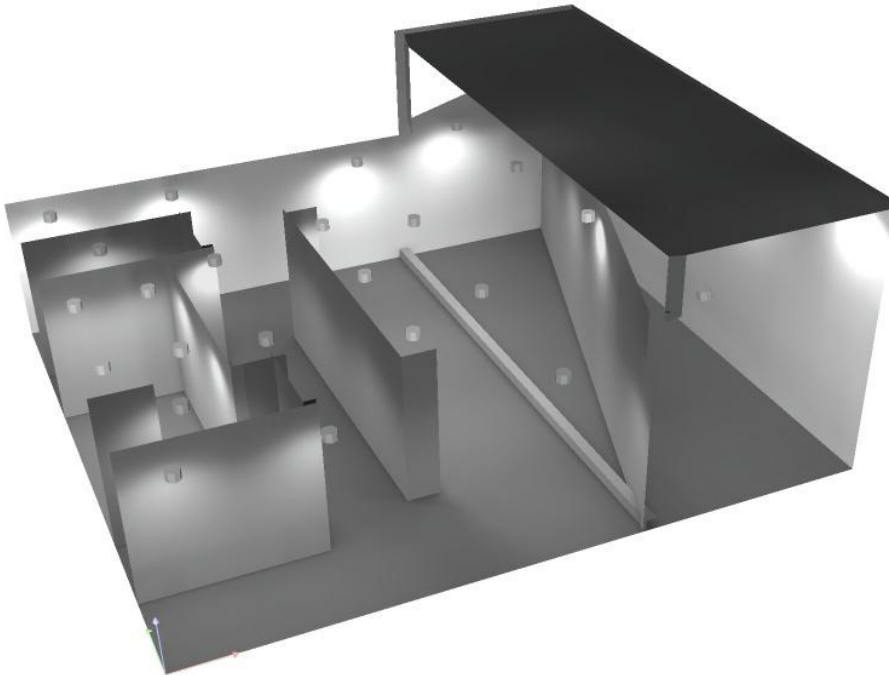
See our luminaire  
catalog for an image of  
the luminaire.



Empyrean Lighting  
Capital One Building Lv 2 11/9 Capital Place  
Birtinya QLD 4575 AUSTRALIA

Operator Brock Shakespeare  
Telephone +61 7 5437 7270  
Fax  
e-Mail brock@empyreanlighting.com

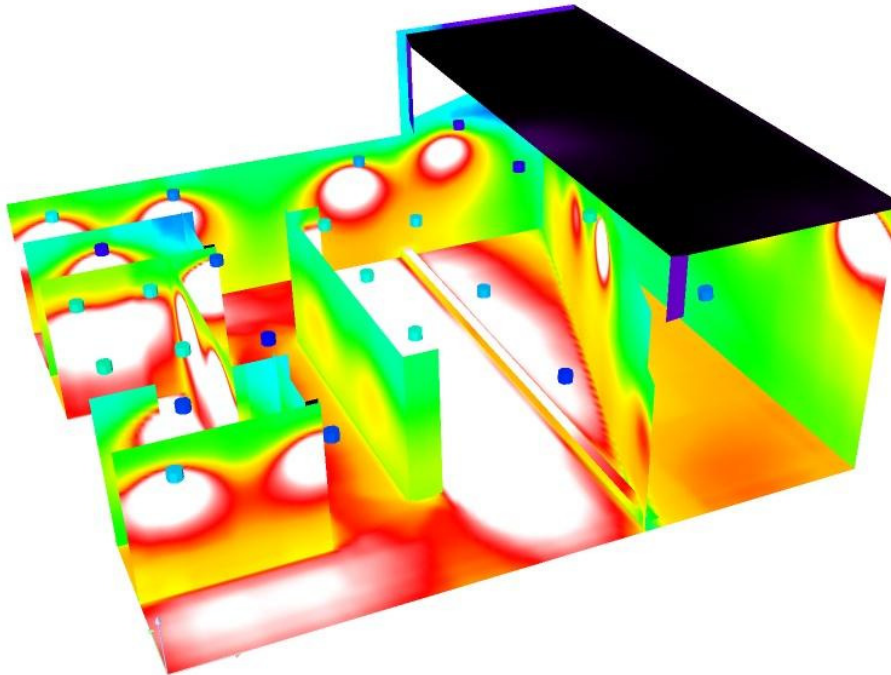
## Room - Entrance & Foyer / 3D Rendering



Empyrean Lighting  
Capital One Building Lv 2 11/9 Capital Place  
Birtinya QLD 4575 AUSTRALIA

Operator Brock Shakespeare  
Telephone +61 7 5437 7270  
Fax  
e-Mail brock@empyreanlighting.com

## Room - Entrance & Foyer / False Colour Rendering

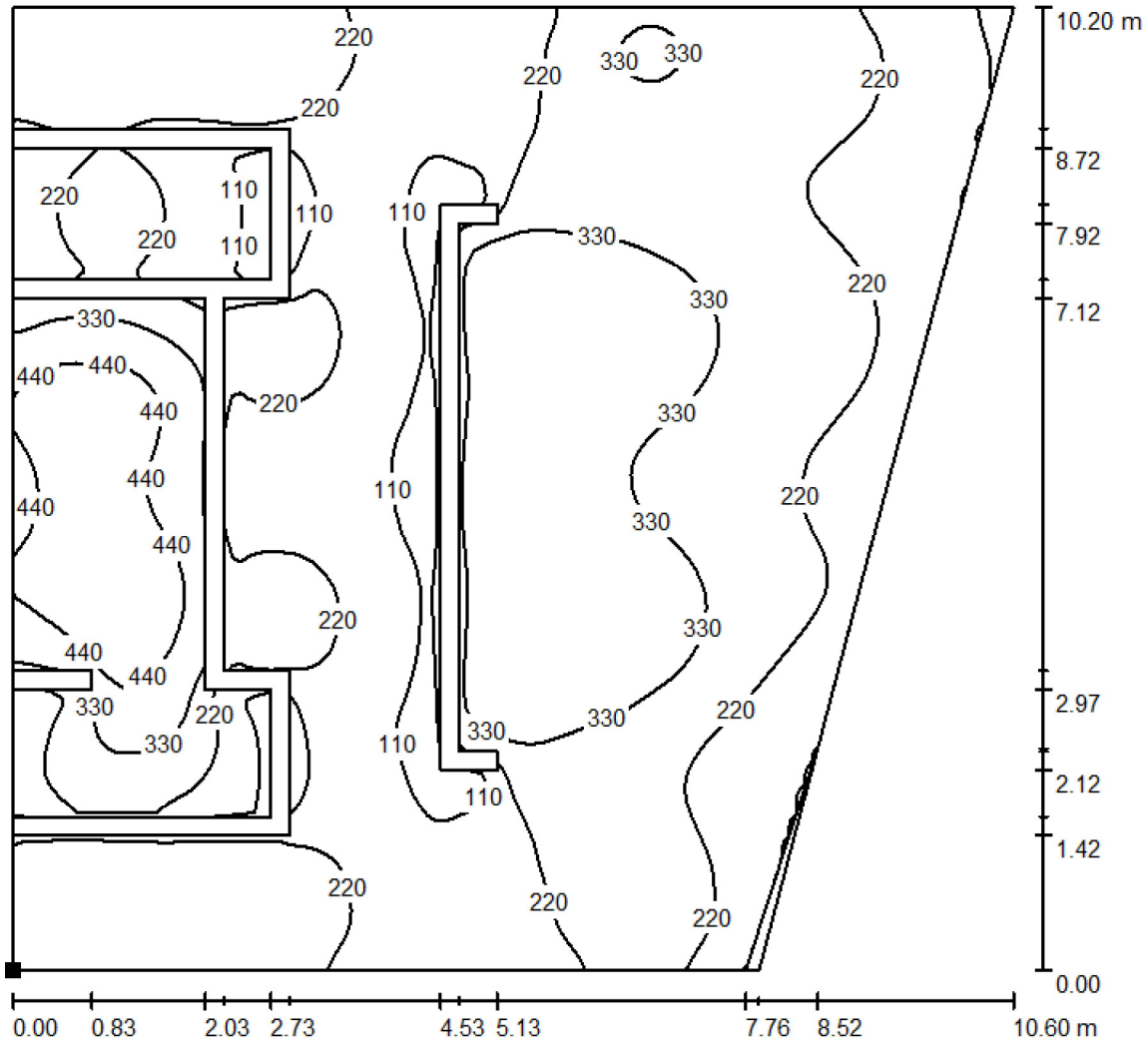


1 5 10 15 40 80 120 150 200 lx

Empyrean Lighting  
 Capital One Building Lv 2 11/9 Capital Place  
 Birtinya QLD 4575 AUSTRALIA

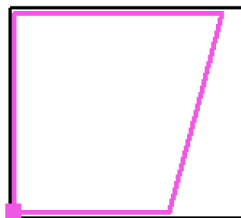
Operator Brock Shakespeare  
 Telephone +61 7 5437 7270  
 Fax  
 e-Mail brock@empyreanlighting.com

## Room - Entrance & Foyer / Calculation Surface - Inside Foyer / Isolines (E, Perpendicular)



Values in Lux, Scale 1 : 80

Position of surface in room:  
 Marked point:  
 (0.172 m, 0.277 m, 0.750 m)



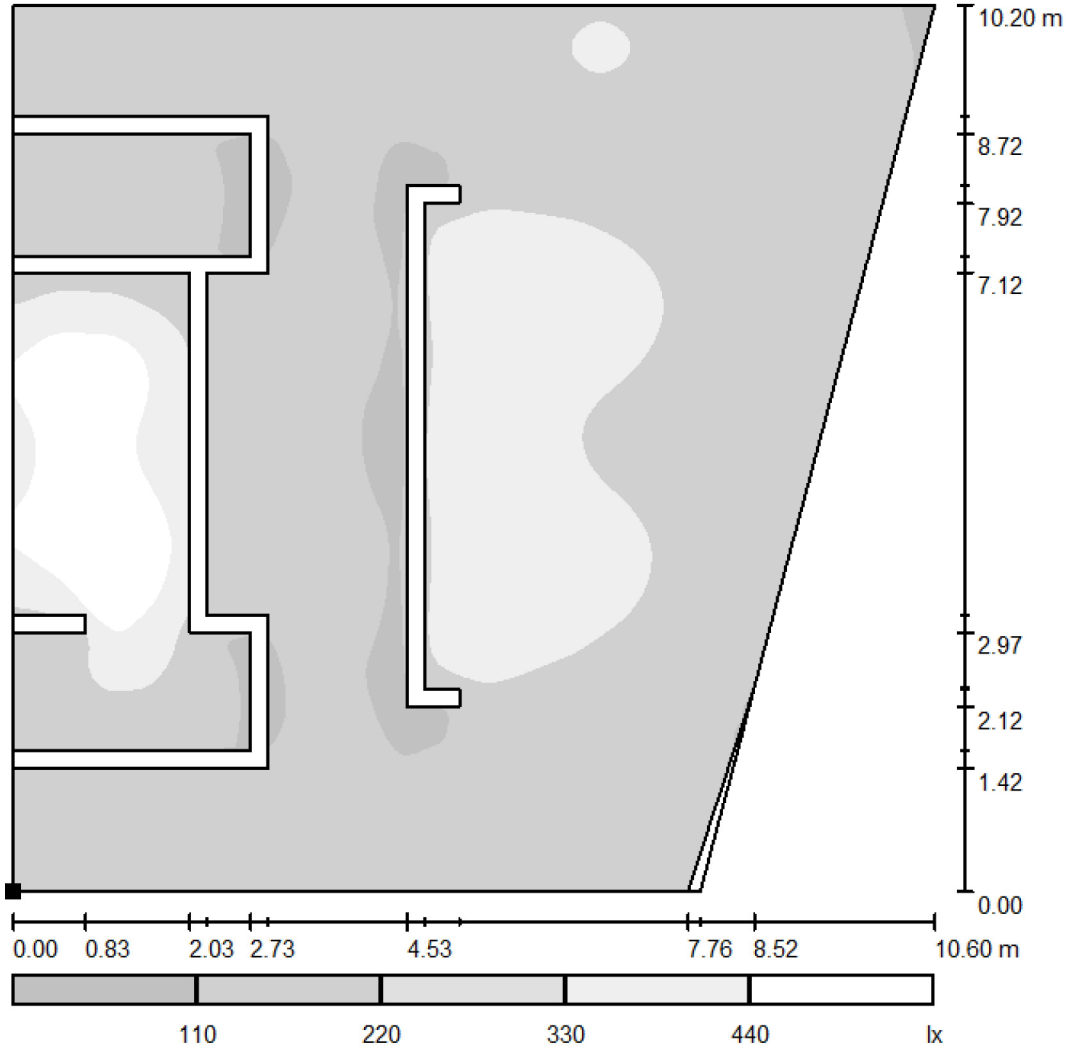
Grid: 128 x 128 Points

$E_{av}$ [lx]	$E_{min}$ [lx]	$E_{max}$ [lx]	$u_0$	$E_{min} / E_{max}$
258	20	553	0.078	0.036

Empyrean Lighting  
 Capital One Building Lv 2 11/9 Capital Place  
 Birtinya QLD 4575 AUSTRALIA

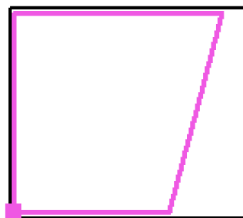
Operator Brock Shakespeare  
 Telephone +61 7 5437 7270  
 Fax  
 e-Mail brock@empyreanlighting.com

## Room - Entrance & Foyer / Calculation Surface - Inside Foyer / Greyscale (E, Perpendicular)



Scale 1 : 87

Position of surface in room:  
 Marked point:  
 (0.172 m, 0.277 m, 0.750 m)



Grid: 128 x 128 Points

$E_{av}$ [lx] 258	$E_{min}$ [lx] 20	$E_{max}$ [lx] 553	$u_0$ 0.078	$E_{min} / E_{max}$ 0.036
----------------------	----------------------	-----------------------	----------------	------------------------------