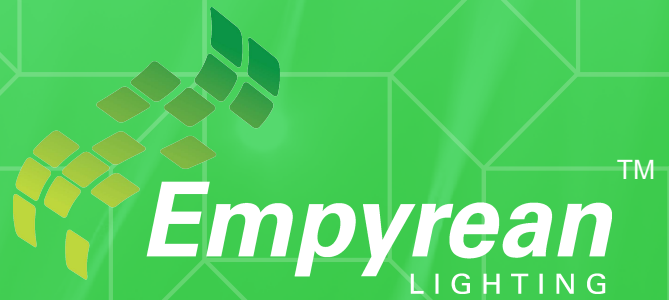


DIALUX REPORT



RETAIL

Corona LED Panel 1200x300 40W

Polaris LED Spotlight XPH 7W

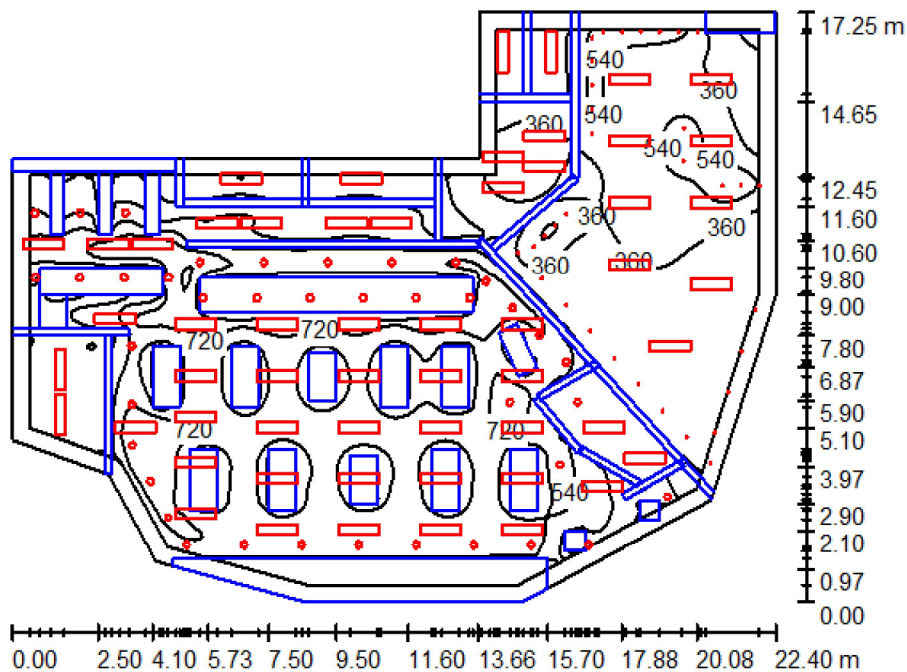
Vega LED Downlight 6" 20W

Vega LED Downlight 8" 20W

Table of contents

Project Cover	1
Table of contents	2
Pharmacy	
Summary	3
Luminaire parts list	4
Photometric Results	5
3D Rendering	6
Room Surfaces	
Workplane	
Greyscale (E)	7
Calculation Surface - Counters	
Isolines (E, Perpendicular)	
Greyscale (E, Perpendicular)	9

Pharmacy / Summary



Height of Room: 3.000 m, Maintenance factor: 0.80

Values in Lux, Scale 1:222

Surface	ρ [%]	E_{av} [lx]	E_{min} [lx]	E_{max} [lx]	u_0
Workplane	/	476	59	957	0.124
Floor	20	290	13	688	0.044
Ceiling	70	82	14	195	0.169
Walls (11)	50	116	2.75	1093	/

Workplane:

Height: 0.750 m
 Grid: 128 x 128 Points
 Boundary Zone: 0.500 m

Illuminance Quotient (according to LG7): Walls / Working Plane: 0.254, Ceiling / Working Plane: 0.172.

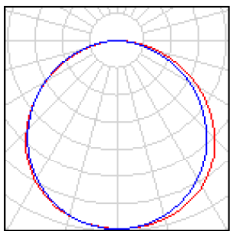
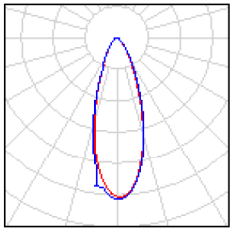
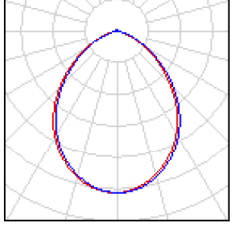
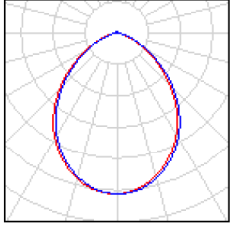
Luminaire Parts List

No.	Pieces	Designation (Correction Factor)	Φ (Luminaire) [lm]	Φ (Lamps) [lm]	P [W]
1	56	Empyrean Lighting Corona-1200R-x39WN (1.000)	2802	2802	36.4
2	33	Empyrean Lighting PolarisXPH-7WMR16-W30 (1.000)	449	449	7.0
3	26	Empyrean Lighting Vega-6x720N (1.000)	1833	1834	22.5
4	13	Empyrean Lighting Vega-8x820N (1.000)	1833	1834	22.5

Total: 243211 Total: 243219 3146.9

Specific connected load: $10.83 \text{ W/m}^2 = 2.28 \text{ W/m}^2/100 \text{ lx}$ (Ground area: 290.45 m^2)

Pharmacy / Luminaire parts list

56 Pieces	<p>Empyrean Lighting Corona-1200R-x39WN Article No.: Luminous flux (Luminaire): 2802 lm Luminous flux (Lamps): 2802 lm Luminaire Wattage: 36.4 W Luminaire classification according to CIE: 100 CIE flux code: 47 80 97 100 100 Fitting: 1 x Panel (Correction Factor 1.000).</p>	<p>See our luminaire catalog for an image of the luminaire.</p>	
33 Pieces	<p>Empyrean Lighting PolarisXPH-7WMR16-W30 Article No.: Luminous flux (Luminaire): 449 lm Luminous flux (Lamps): 449 lm Luminaire Wattage: 7.0 W Luminaire classification according to CIE: 100 CIE flux code: 88 96 99 100 101 Fitting: 1 x LED (Correction Factor 1.000).</p>	<p>See our luminaire catalog for an image of the luminaire.</p>	
26 Pieces	<p>Empyrean Lighting Vega-6x720N Article No.: Luminous flux (Luminaire): 1833 lm Luminous flux (Lamps): 1834 lm Luminaire Wattage: 22.5 W Luminaire classification according to CIE: 100 CIE flux code: 62 91 99 100 100 Fitting: 1 x User defined (Correction Factor 1.000).</p>	<p>See our luminaire catalog for an image of the luminaire.</p>	
13 Pieces	<p>Empyrean Lighting Vega-8x820N Article No.: Luminous flux (Luminaire): 1833 lm Luminous flux (Lamps): 1834 lm Luminaire Wattage: 22.5 W Luminaire classification according to CIE: 100 CIE flux code: 62 91 99 100 100 Fitting: 1 x User defined (Correction Factor 1.000).</p>	<p>See our luminaire catalog for an image of the luminaire.</p>	

Pharmacy / Photometric Results

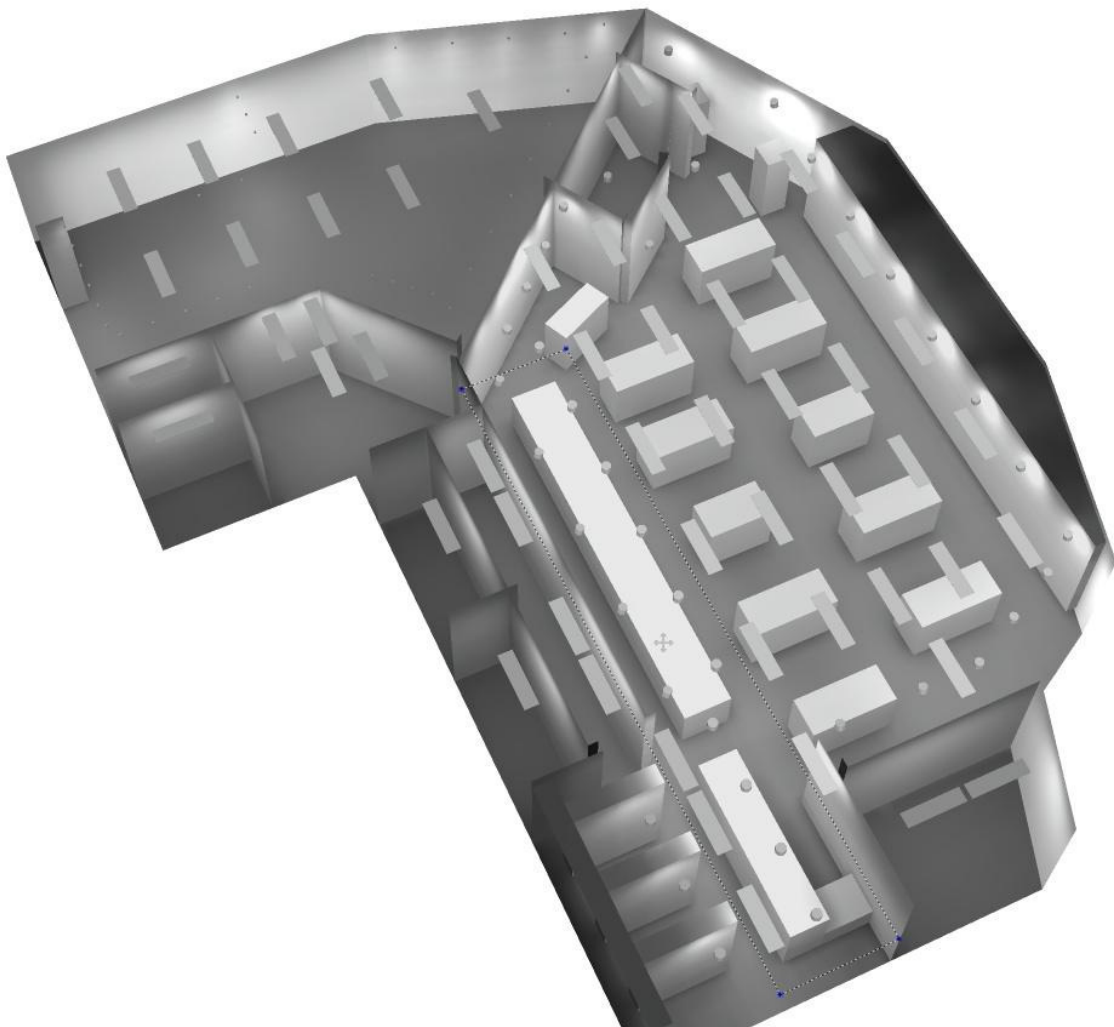
Total Luminous Flux: 243211 lm
 Total Load: 3146.9 W
 Maintenance factor: 0.80
 Boundary Zone: 0.500 m

Surface	Average illuminances [lx]			Reflection factor [%]	Average luminance [cd/m ²]
	direct	indirect	total		
Workplane	417	58	476	/	/
Calculation Surface - Counters	750	86	837	/	/
Floor	241	49	290	20	18
Ceiling	0.53	82	82	70	18
Wall 1	0.43	6.60	7.02	50	1.12
Wall 2	101	42	143	50	23
Wall 3	72	44	116	50	18
Wall 4	94	51	146	50	23
Wall 5	85	37	121	50	19
Wall 6	115	45	160	50	25
Wall 7	44	20	64	50	10
Wall 8	122	49	171	50	27
Wall 9	79	40	119	50	19
Wall 10	246	92	338	50	54
Wall 11	21	18	39	50	6.23

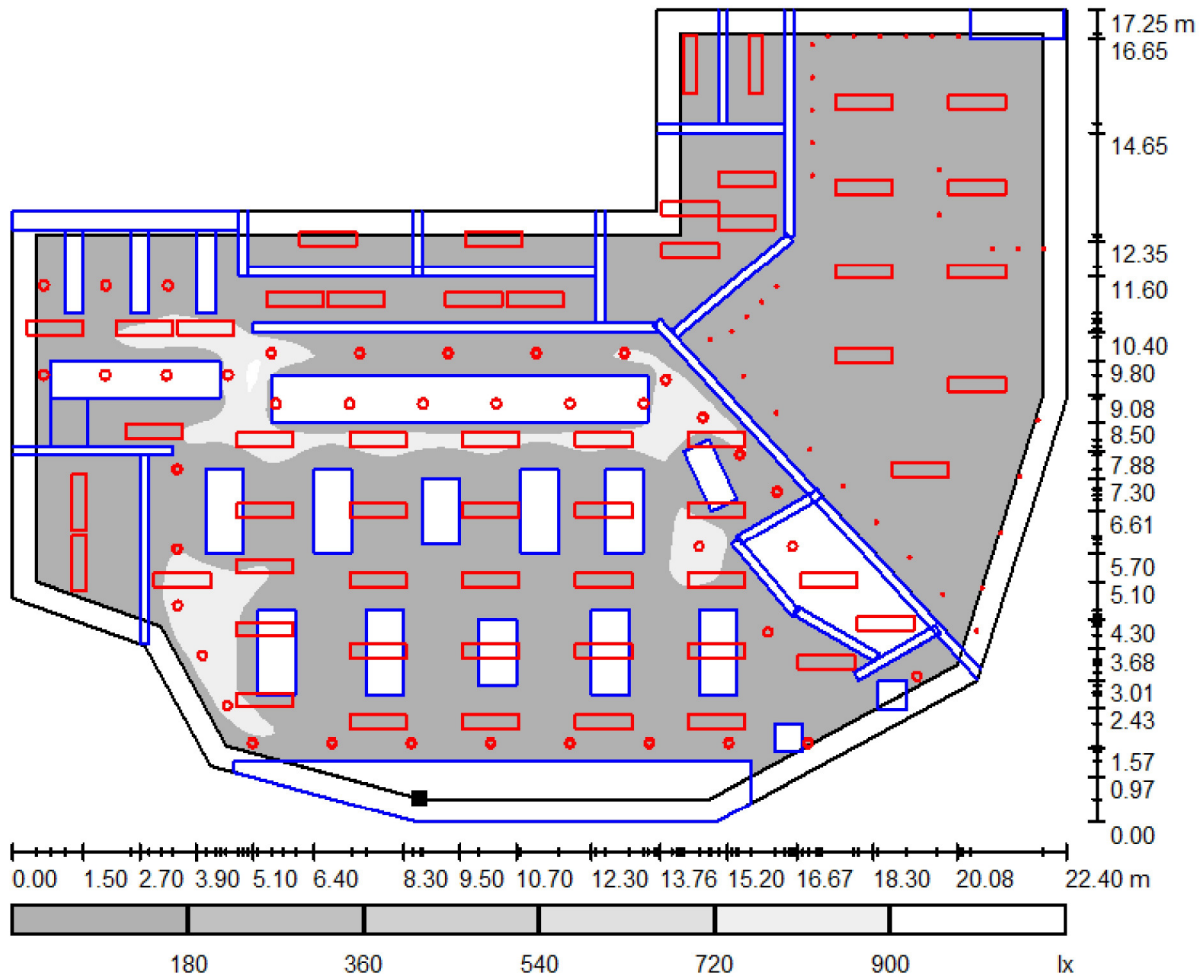
Uniformity on the working plane
 u_0 : 0.124 (1:8)
 E_{\min} / E_{\max} : 0.062 (1:16)

Illuminance Quotient (according to LG7): Walls / Working Plane: 0.254, Ceiling / Working Plane: 0.172.

Specific connected load: 10.83 W/m² = 2.28 W/m²/100 lx (Ground area: 290.45 m²)

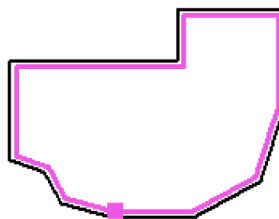


Pharmacy / Workplane / Greyscale (E)



Scale 1 : 161

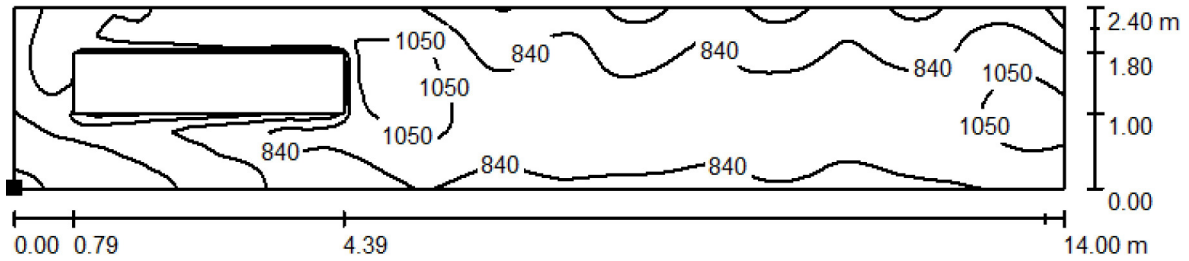
Position of surface in room:
 Working plane with 0.500 m
 Boundary Zone
 Marked point:
 (8.667 m, 0.500 m, 0.750 m)



Grid: 128 x 128 Points

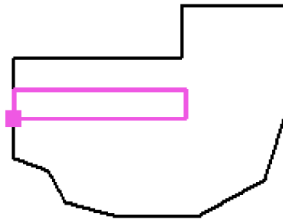
E_{av} [lx]	E_{min} [lx]	E_{max} [lx]	u0	E_{min} / E_{max}
476	59	957	0.124	0.062

Pharmacy / Calculation Surface - Counters / Isolines (E, Perpendicular)



Values in Lux, Scale 1 : 101

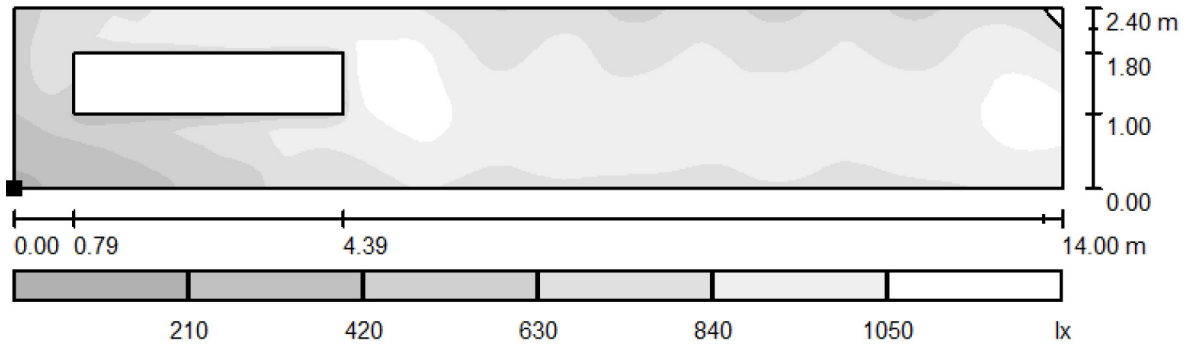
Position of surface in room:
Marked point:
(0.012 m, 8.000 m, 1.200 m)



Grid: 128 x 32 Points

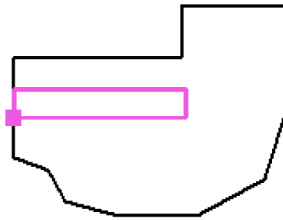
E_{av} [lx]	E_{min} [lx]	E_{max} [lx]	u_0	E_{min} / E_{max}
837	162	1172	0.194	0.138

Pharmacy / Calculation Surface - Counters / Greyscale (E, Perpendicular)



Scale 1 : 101

Position of surface in room:
Marked point:
(0.012 m, 8.000 m, 1.200 m)



Grid: 128 x 32 Points

E_{av} [lx]	E_{min} [lx]	E_{max} [lx]	u_0	E_{min} / E_{max}
837	162	1172	0.194	0.138