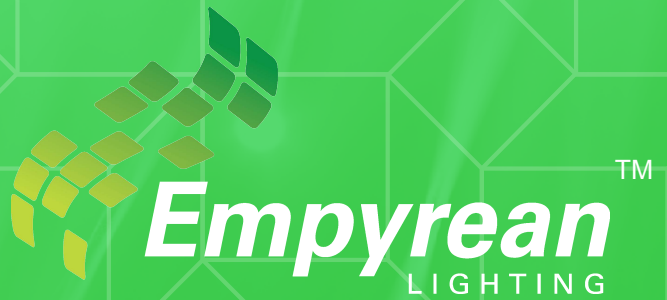


DIALUX REPORT



STADIUM

Existing Stadium

- Replacing 16 x 400W Metal Halide with 16 x AndromedaXPB-Flood-233W
- Average 500lux
- Mounting height of 7.8m

New Courts

- 2 x Basketball courts 35.5m x 45m
- Average 300lux
- Mounting height of 8m

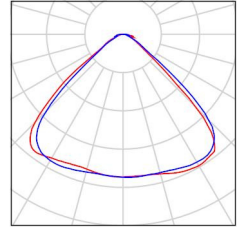
Table of contents

Project Cover	1
Table of contents	2
Existing Stadium	
Luminaire parts list	3
3D Rendering	4
False Colour Rendering	5
Room Surfaces	
Basketball 1 Calculation Grid (PA)	
Isolines (E, Perpendicular)	6
Greyscale (E, Perpendicular)	7
Value Chart (E, Perpendicular)	8
New Courts	
Luminaire parts list	9
3D Rendering	10
False Colour Rendering	11
Room Surfaces	
Basketball 2 Calculation Grid (PA)	
Isolines (E, Perpendicular)	12
Greyscale (E, Perpendicular)	13
Value Chart (E, Perpendicular)	14
Basketball 3 Calculation Grid (PA)	
Isolines (E, Perpendicular)	15
Greyscale (E, Perpendicular)	16
Value Chart (E, Perpendicular)	17

Existing Stadium / Luminaire parts list

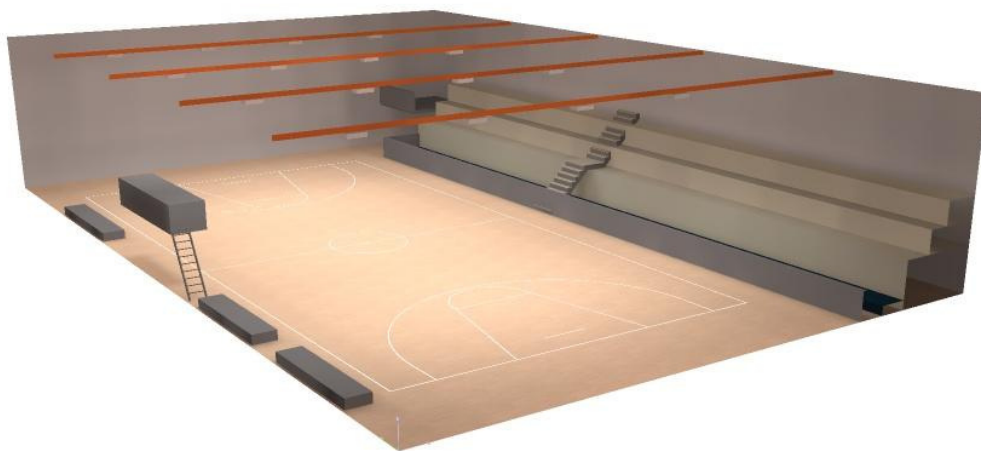
Lens81
Article No.:
Luminous flux (Luminaire): 25200 lm
Luminous flux (Lamps): 25200 lm
Luminaire Wattage: 233.0 W
Luminaire classification according to CIE: 100
CIE flux code: 59 93 98 100 100
Fitting: 1 x Nichia 219B (Correction Factor 1.000).

See our luminaire
catalog for an image of
the luminaire.



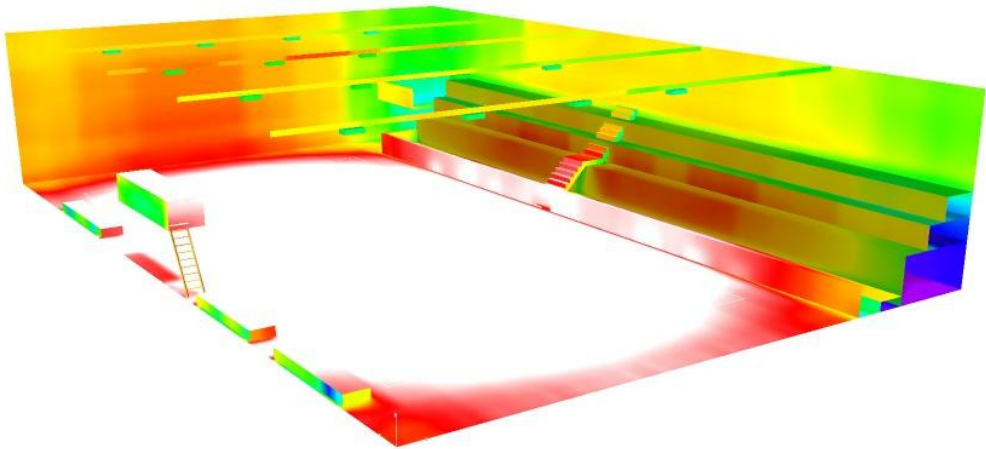


Existing Stadium / 3D Rendering





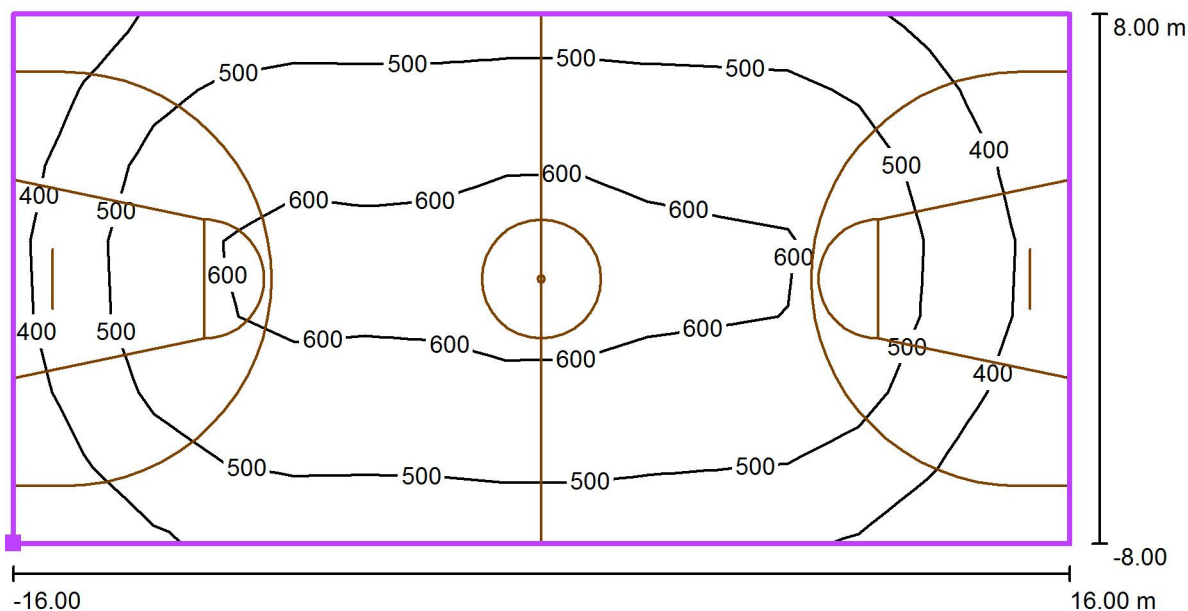
Existing Stadium / False Colour Rendering



1 5 15 30 60 100 150 200 300

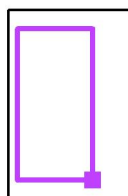
lx

Existing Stadium / Basketball 1 Calculation Grid (PA) / Isolines (E, Perpendicular)



Values in Lux, Scale 1 : 229

Position of surface in room:
Marked point: (18.000 m, 4.000 m,
0.000 m)



Grid: 15 x 7 Points

E_{av} [lx]
509

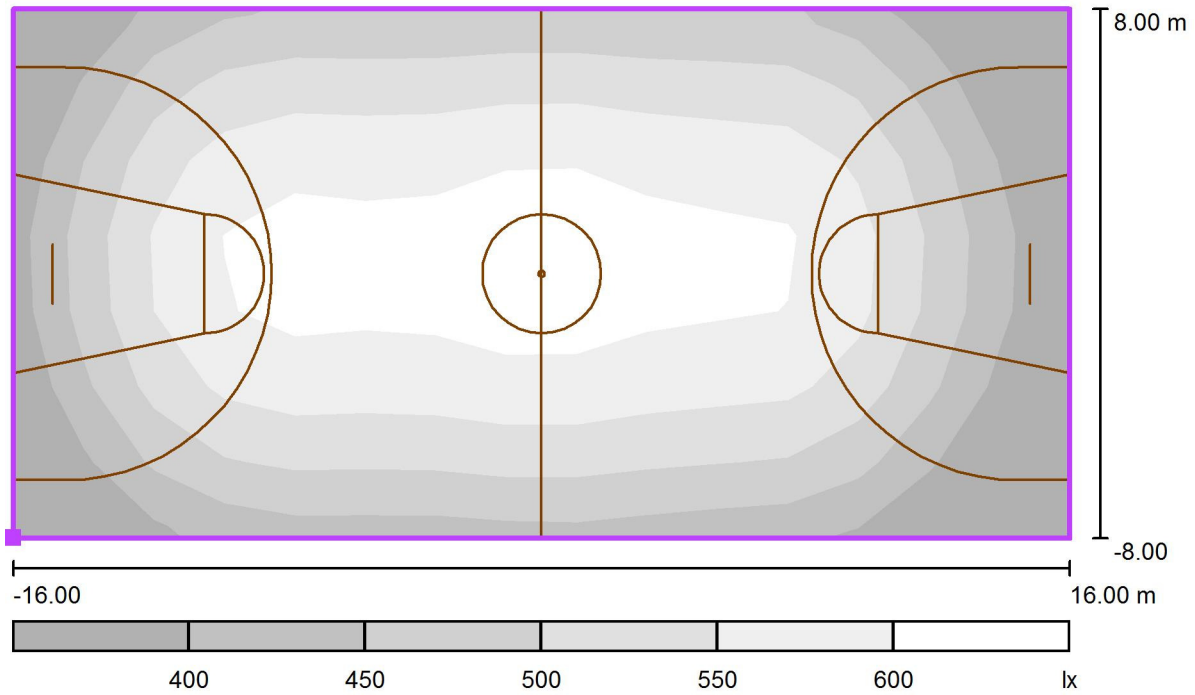
E_{min} [lx]
289

E_{max} [lx]
637

u_0
0.57

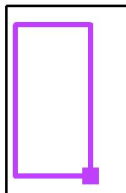
E_{min} / E_{max}
0.45

Existing Stadium / Basketball 1 Calculation Grid (PA) / Greyscale (E, Perpendicular)



Scale 1 : 229

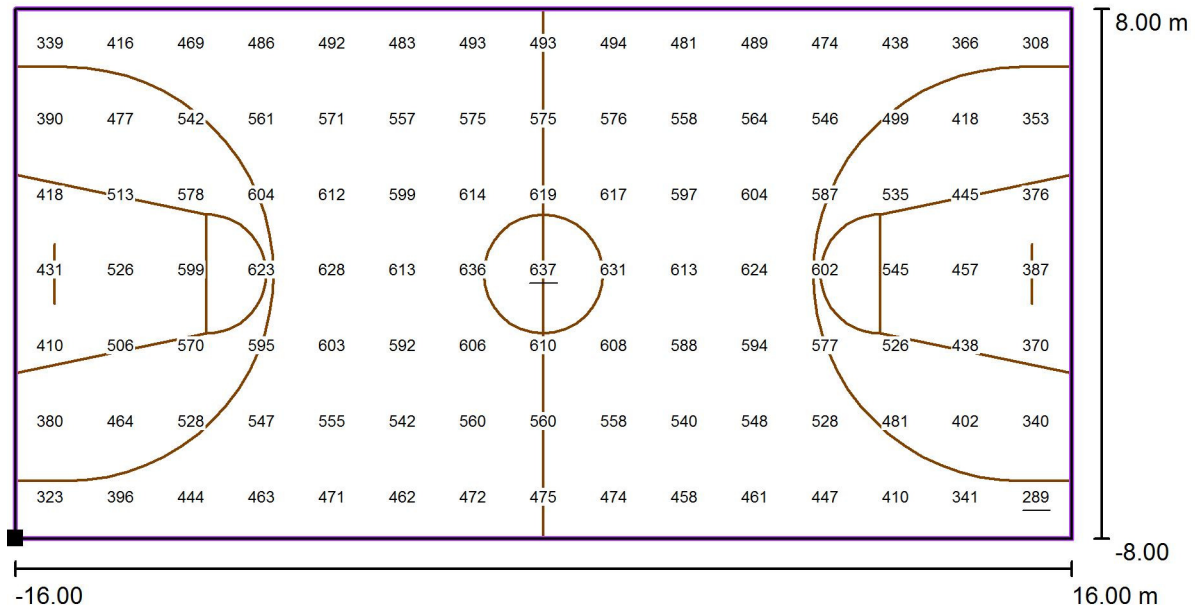
Position of surface in room:
 Marked point: (18.000 m, 4.000 m,
 0.000 m)



Grid: 15 x 7 Points

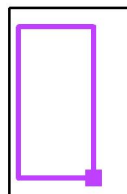
E_{av} [lx]	E_{min} [lx]	E_{max} [lx]	u0	E_{min} / E_{max}
509	289	637	0.57	0.45

Existing Stadium / Basketball 1 Calculation Grid (PA) / Value Chart (E, Perpendicular)



Values in Lux, Scale 1 : 229

Position of surface in room:
Marked point: (18.000 m, 4.000 m, 0.000 m)



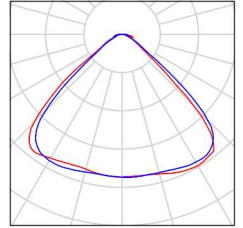
Grid: 15 x 7 Points

E_{av} [lx]	E_{min} [lx]	E_{max} [lx]	u0	E_{min} / E_{max}
509	289	637	0.57	0.45

New Courts / Luminaire parts list

Lens81
Article No.:
Luminous flux (Luminaire): 25200 lm
Luminous flux (Lamps): 25200 lm
Luminaire Wattage: 233.0 W
Luminaire classification according to CIE: 100
CIE flux code: 59 93 98 100 100
Fitting: 1 x Nichia 219B (Correction Factor 1.000).

See our luminaire catalog for an image of the luminaire.



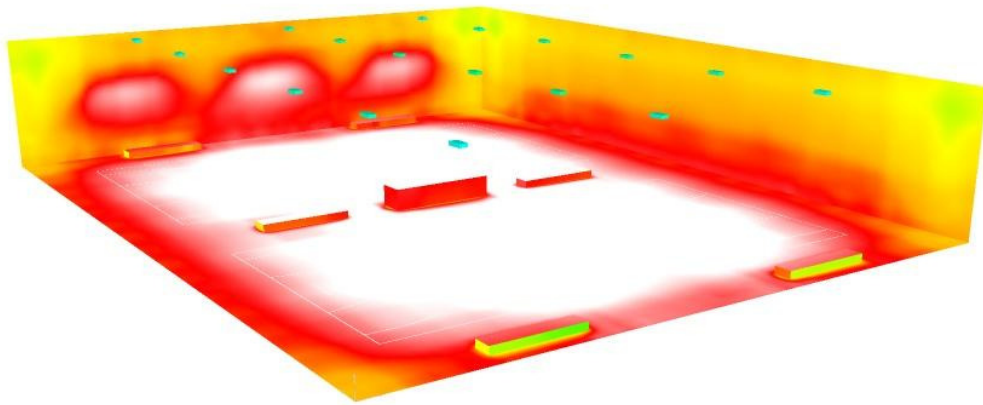


New Courts / 3D Rendering





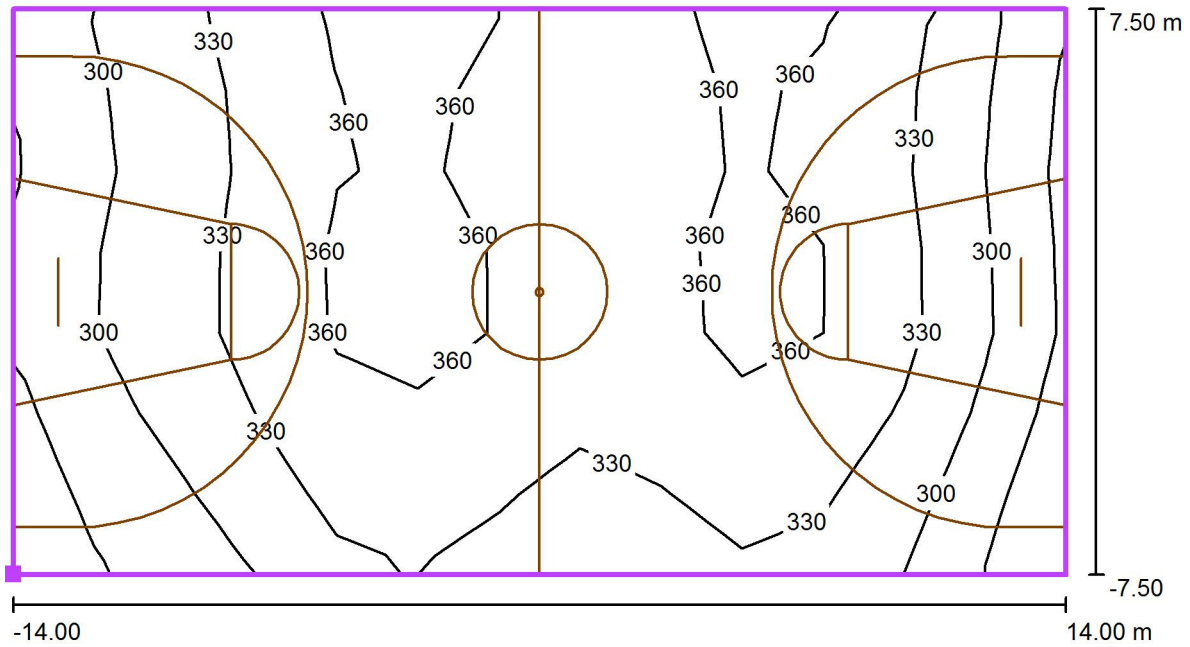
New Courts / False Colour Rendering



1 5 15 30 60 100 150 200 300

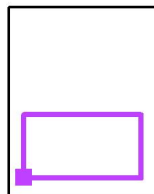
lx

New Courts / Basketball 2 Calculation Grid (PA) / Isolines (E, Perpendicular)



Values in Lux, Scale 1 : 201

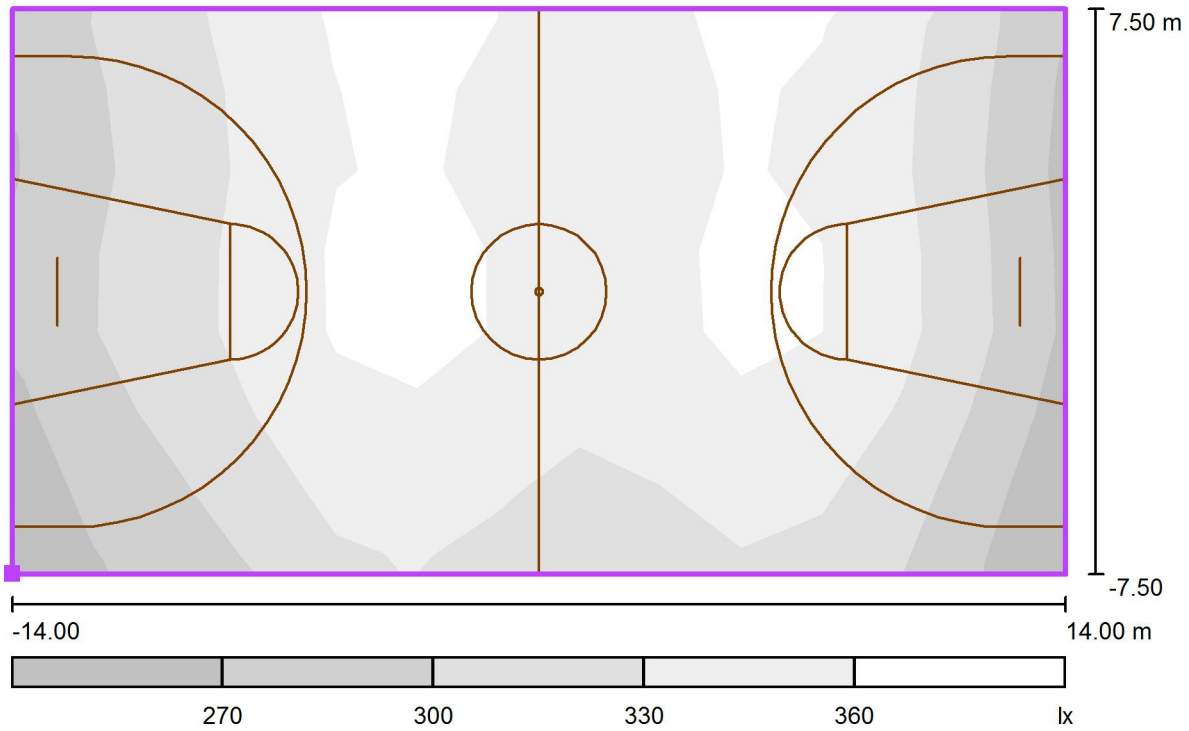
Position of surface in room:
Marked point: (3.500 m, 4.500 m, 0.000 m)



Grid: 13 x 7 Points

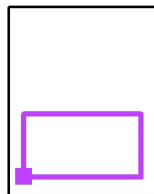
E_{av} [lx]	E_{min} [lx]	E_{max} [lx]	u0	E_{min} / E_{max}
330	256	376	0.78	0.68

New Courts / Basketball 2 Calculation Grid (PA) / Greyscale (E, Perpendicular)



Scale 1 : 201

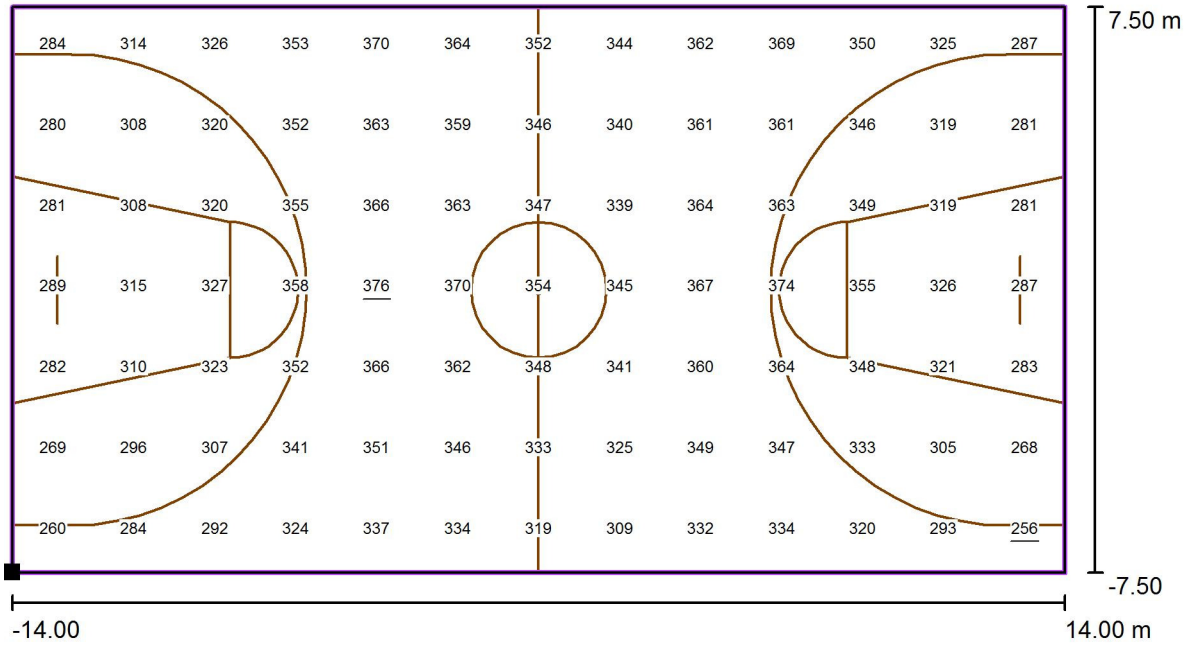
Position of surface in room:
Marked point: (3.500 m, 4.500 m,
0.000 m)



Grid: 13 x 7 Points

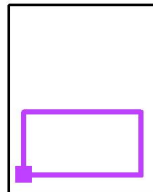
E_{av} [lx]	E_{min} [lx]	E_{max} [lx]	u_0	E_{min} / E_{max}
330	256	376	0.78	0.68

New Courts / Basketball 2 Calculation Grid (PA) / Value Chart (E, Perpendicular)



Values in Lux, Scale 1 : 201

Position of surface in room:
Marked point: (3.500 m, 4.500 m, 0.000 m)



Grid: 13 x 7 Points

E_{av} [lx]
330

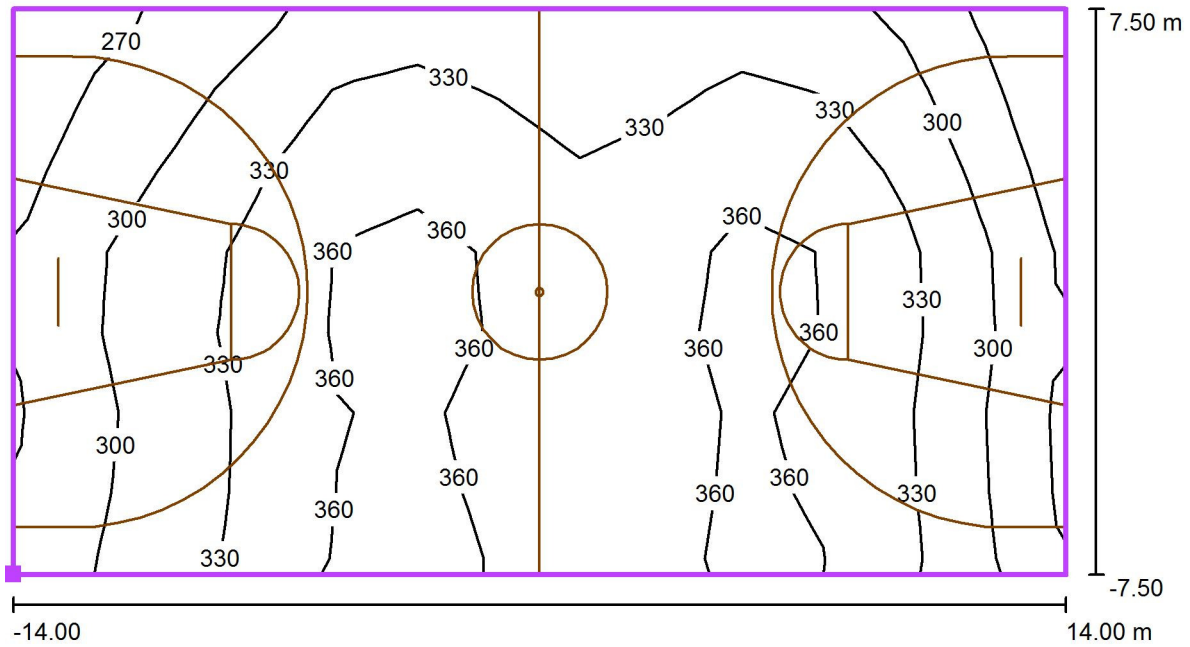
E_{min} [lx]
256

E_{max} [lx]
376

$u0$
0.78

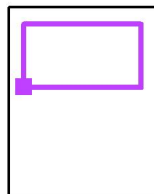
E_{min} / E_{max}
0.68

New Courts / Basketball 3 Calculation Grid (PA) / Isolines (E, Perpendicular)



Values in Lux, Scale 1 : 201

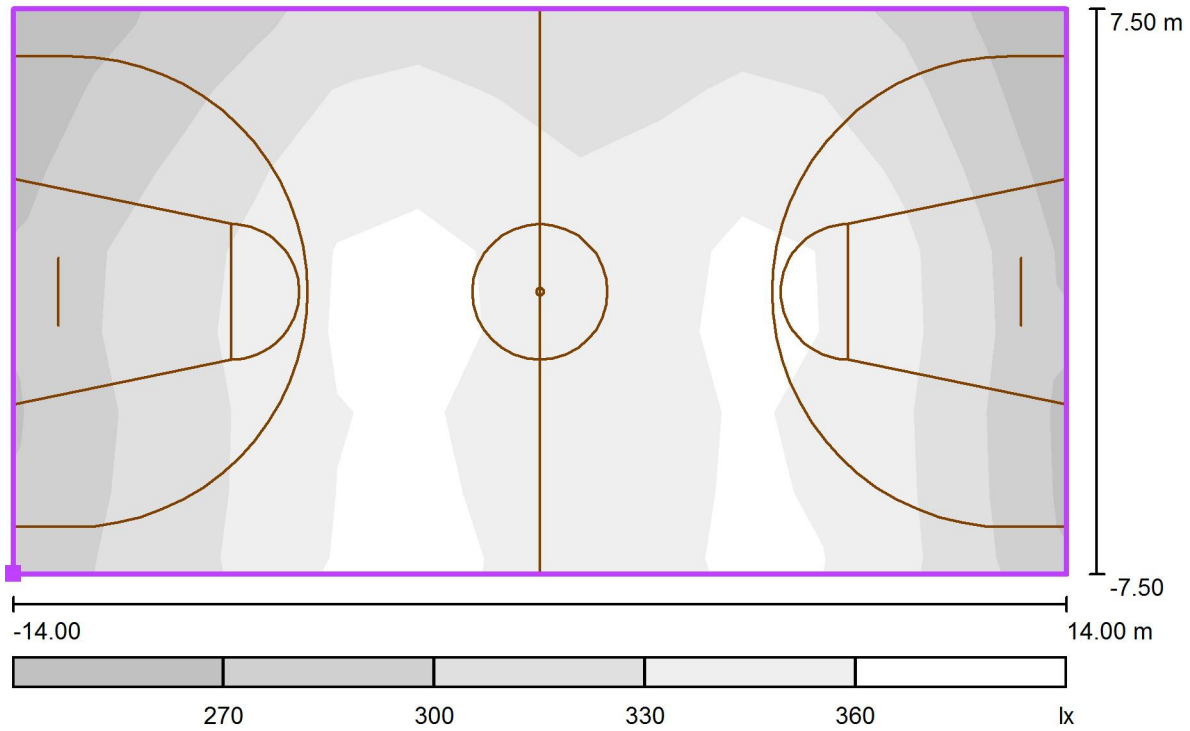
Position of surface in room:
 Marked point: (3.500 m, 26.000 m,
 0.000 m)



Grid: 13 x 7 Points

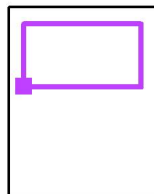
E_{av} [lx]	E_{min} [lx]	E_{max} [lx]	u0	E_{min} / E_{max}
328	252	374	0.77	0.67

New Courts / Basketball 3 Calculation Grid (PA) / Greyscale (E, Perpendicular)



Scale 1 : 201

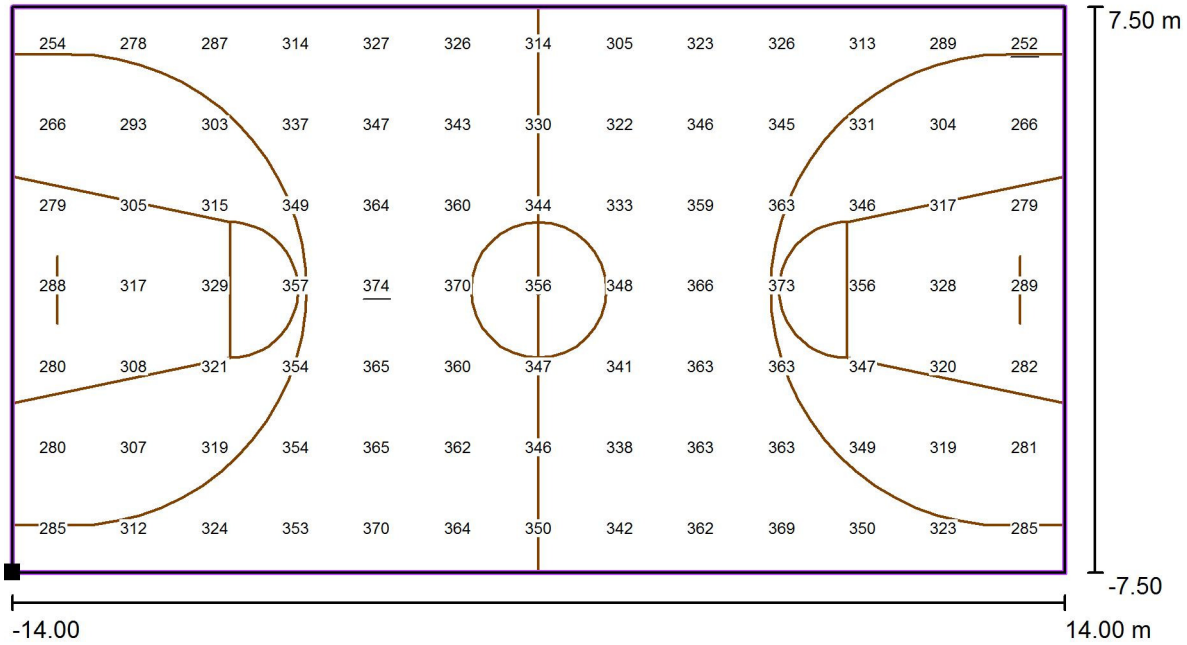
Position of surface in room:
Marked point: (3.500 m, 26.000 m,
0.000 m)



Grid: 13 x 7 Points

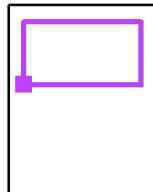
E_{av} [lx]	E_{min} [lx]	E_{max} [lx]	u_0	E_{min} / E_{max}
328	252	374	0.77	0.67

New Courts / Basketball 3 Calculation Grid (PA) / Value Chart (E, Perpendicular)



Values in Lux, Scale 1 : 201

Position of surface in room:
Marked point: (3.500 m, 26.000 m, 0.000 m)



Grid: 13 x 7 Points

E_{av} [lx]
328

E_{min} [lx]
252

E_{max} [lx]
374

u_0
0.77

E_{min} / E_{max}
0.67