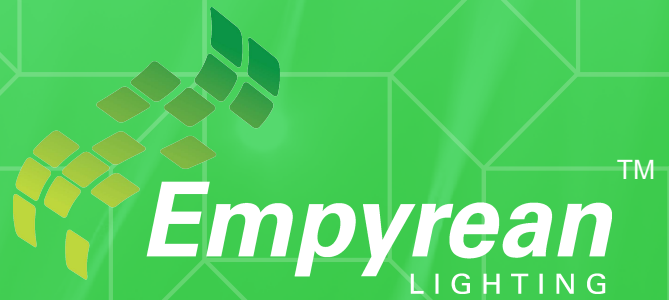


DIALUX REPORT



WAREHOUSE

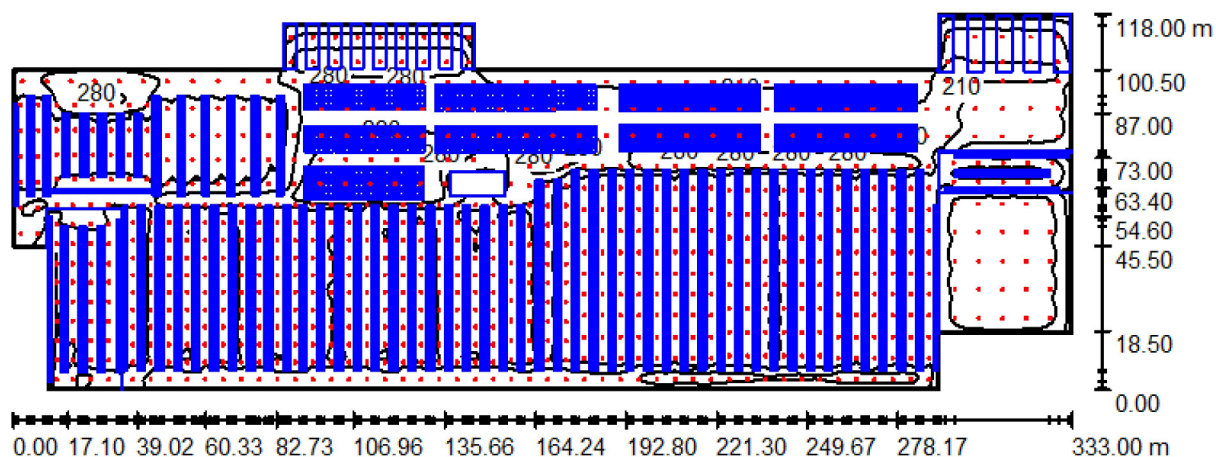
AndromedaXPB Flood 185W & 133W

- 12m mounting height
- One for one replacement of Metal Halide 400W & 250W Metal Halide.

Table of contents

Project Cover	1
Table of contents	2
Warehouse	
Summary	3
Luminaire parts list	4
3D Rendering	5
False Colour Rendering	6
Room Surfaces	
Workplane	
Isolines (E)	7
Greyscale (E)	8
Calculation Surface - Rack Section	
Isolines (E, Perpendicular)	9
Value Chart (E, Perpendicular)	10
Calculation Surface - Low Pallets Room	
Isolines (E, Perpendicular)	11
Value Chart (E, Perpendicular)	12

Warehouse / Summary



Height of Room: 12.000 m, Maintenance factor: 0.80

Values in Lux, Scale 1:2381

Surface	ρ [%]	E_{av} [lx]	E_{min} [lx]	E_{max} [lx]	u_0
Workplane	/	200	40	351	0.198
Floor	20	123	1.06	310	0.009
Ceiling	70	57	3.33	360	0.059
Walls (14)	50	95	7.16	398	/

Workplane:

Height: 1.000 m
 Grid: 128 x 128 Points
 Boundary Zone: 0.500 m

Illuminance Quotient (according to LG7): Walls / Working Plane: 0.483, Ceiling / Working Plane: 0.257.

Luminaire Parts List

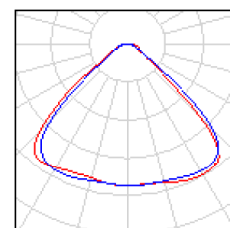
No.	Pieces	Designation (Correction Factor)	Φ (Luminaire) [lm]	Φ (Lamps) [lm]	P [W]
1	78	Empyrean Lighting AndromedaXPB-133W-Lens81 (1.000)	14699	14700	133.0
2	689	Empyrean Lighting AndromedaXPB-185W-Lens81 (1.000)	19949	19950	185.0
Total:			14891611	14892150	137839.0

Specific connected load: $4.06 \text{ W/m}^2 = 2.03 \text{ W/m}^2/100 \text{ lx}$ (Ground area: 33936.00 m^2)

Warehouse / Luminaire parts list

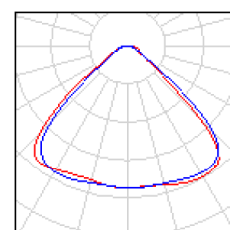
78 Pieces Empyrean Lighting AndromedaXPB-133W-
 Lens81
 Article No.:
 Luminous flux (Luminaire): 14699 lm
 Luminous flux (Lamps): 14700 lm
 Luminaire Wattage: 133.0 W
 Luminaire classification according to CIE: 100
 CIE flux code: 59 93 98 100 100
 Fitting: 1 x Nichia 219B (Correction Factor 1.000).

See our luminaire
 catalog for an image of
 the luminaire.

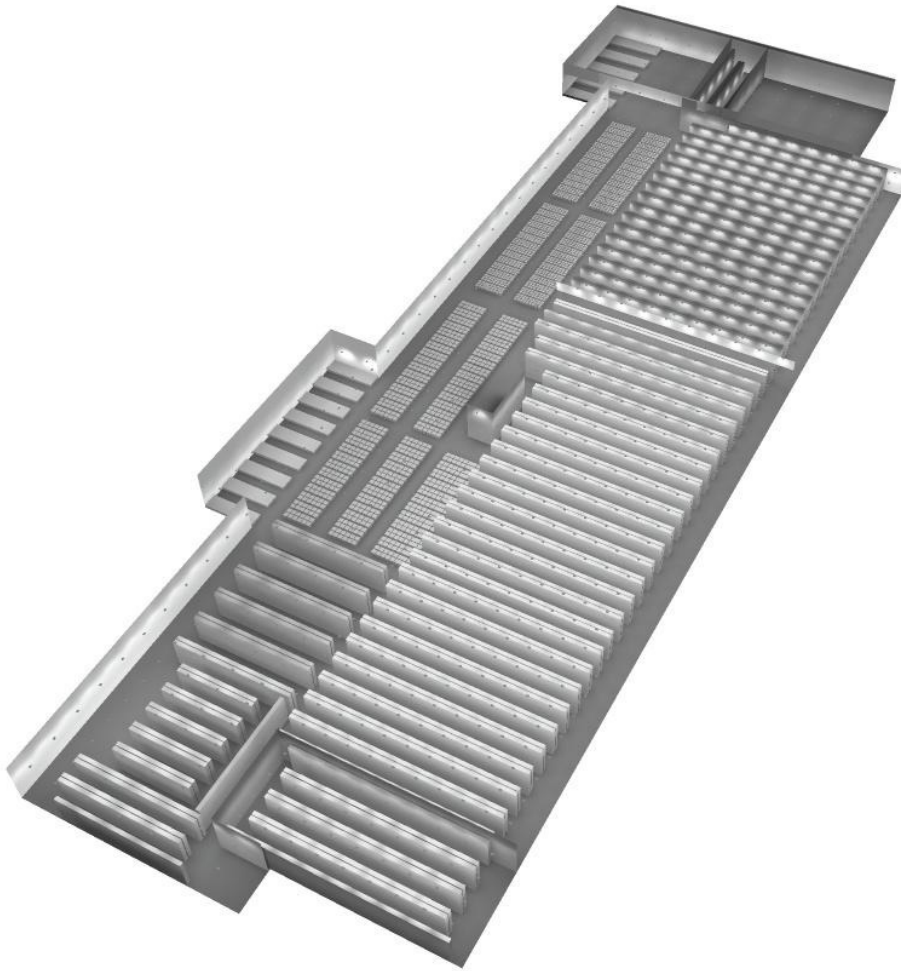


689 Pieces Empyrean Lighting AndromedaXPB-185W-
 Lens81
 Article No.:
 Luminous flux (Luminaire): 19949 lm
 Luminous flux (Lamps): 19950 lm
 Luminaire Wattage: 185.0 W
 Luminaire classification according to CIE: 100
 CIE flux code: 59 93 98 100 100
 Fitting: 1 x Nichia 219B (Correction Factor 1.000).

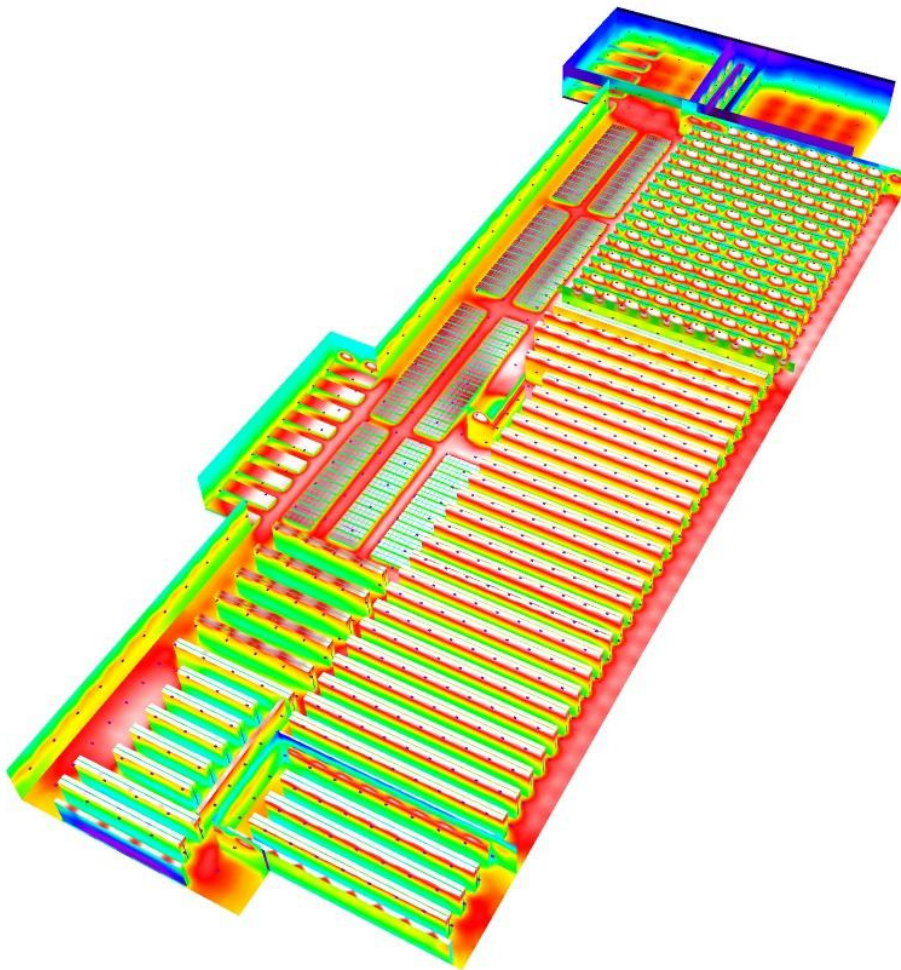
See our luminaire
 catalog for an image of
 the luminaire.



Warehouse / 3D Rendering

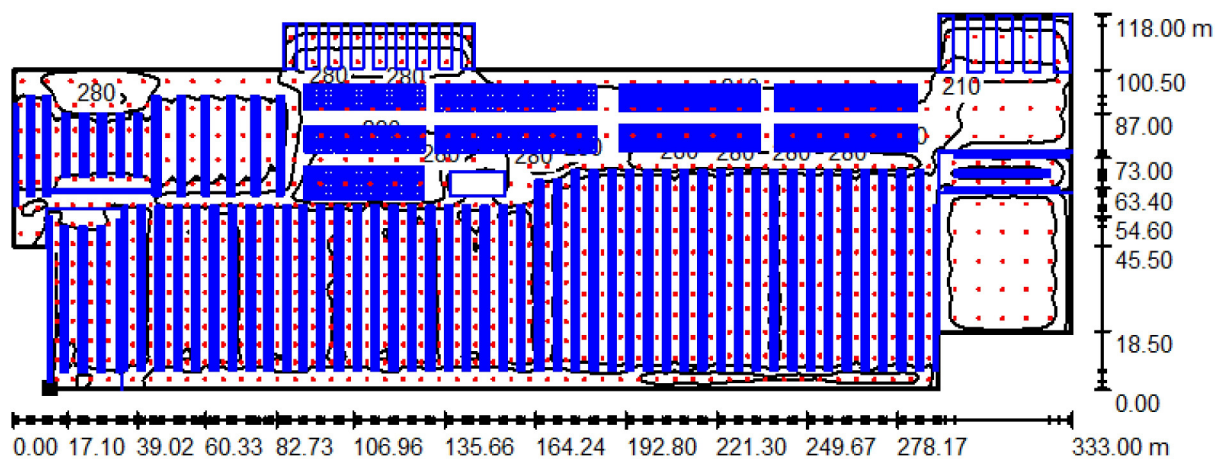


Warehouse / False Colour Rendering



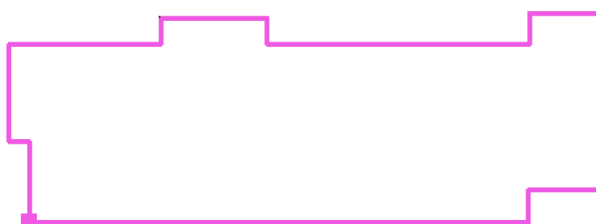
lx

Warehouse / Workplane / Isolines (E)



Position of surface in room:
 Working plane with 0.500 m
 Boundary Zone
 Marked point:
 (17.500 m, 6.500 m, 1.000 m)

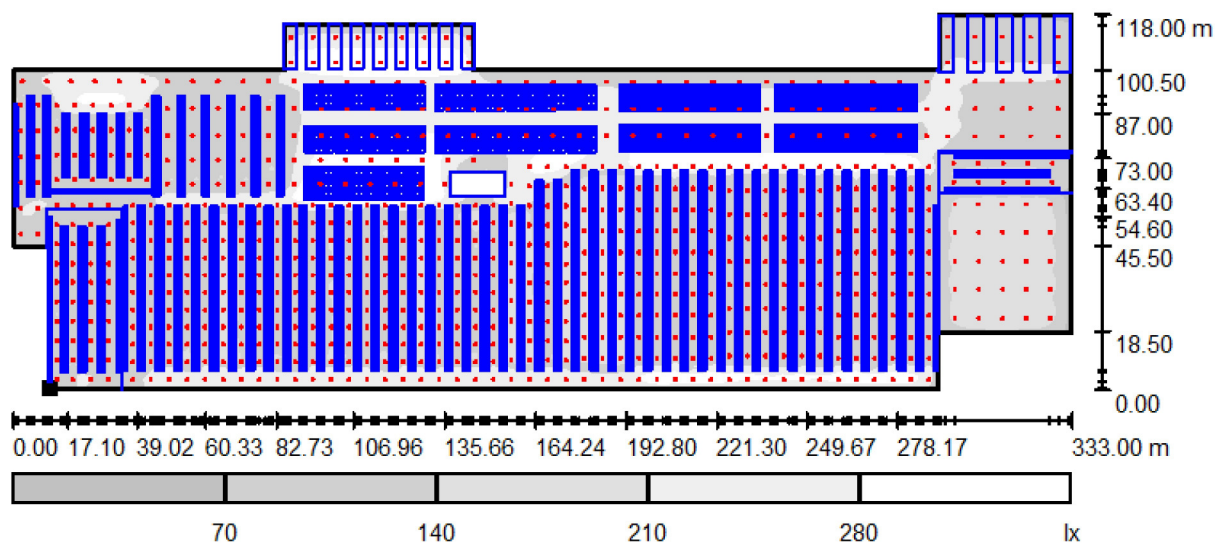
Values in Lux, Scale 1 : 2381



Grid: 128 x 128 Points

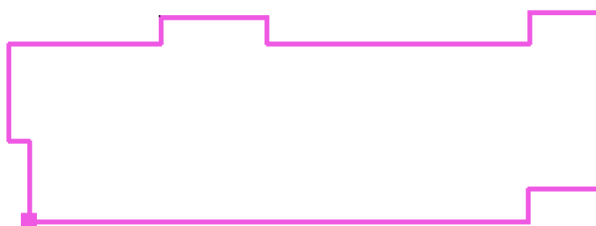
E_{av} [lx]	E_{min} [lx]	E_{max} [lx]	u0	E_{min} / E_{max}
200	40	351	0.198	0.113

Warehouse / Workplane / Greyscale (E)



Scale 1 : 2381

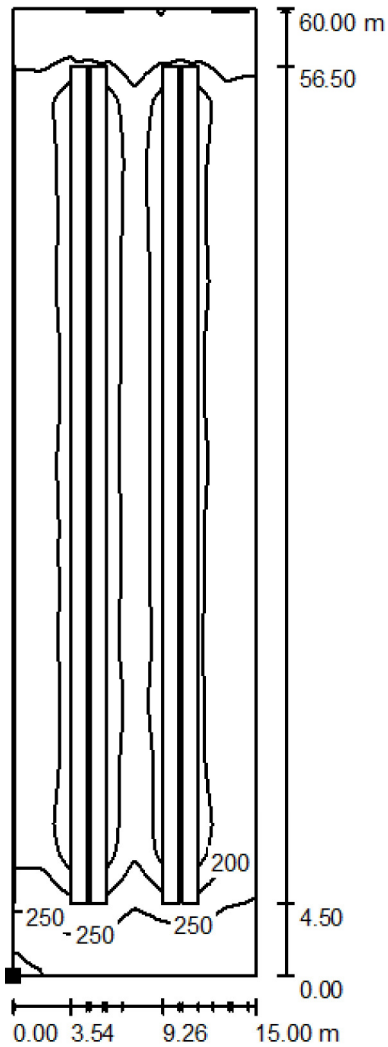
Position of surface in room:
 Working plane with 0.500 m
 Boundary Zone
 Marked point:
 (17.500 m, 6.500 m, 1.000 m)



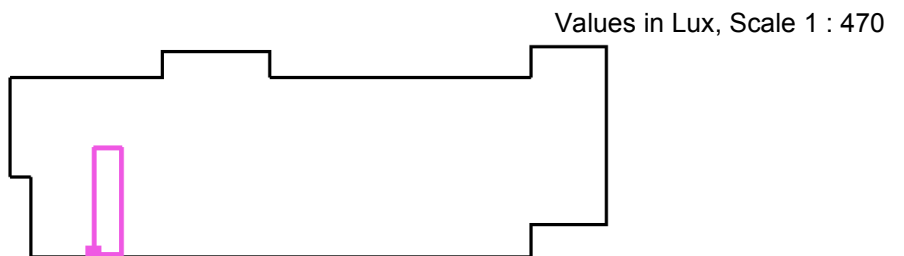
Grid: 128 x 128 Points

E_{av} [lx]	E_{min} [lx]	E_{max} [lx]	u0	E_{min} / E_{max}
200	40	351	0.198	0.113

Warehouse / Calculation Surface - Rack Section / Isolines (E, Perpendicular)



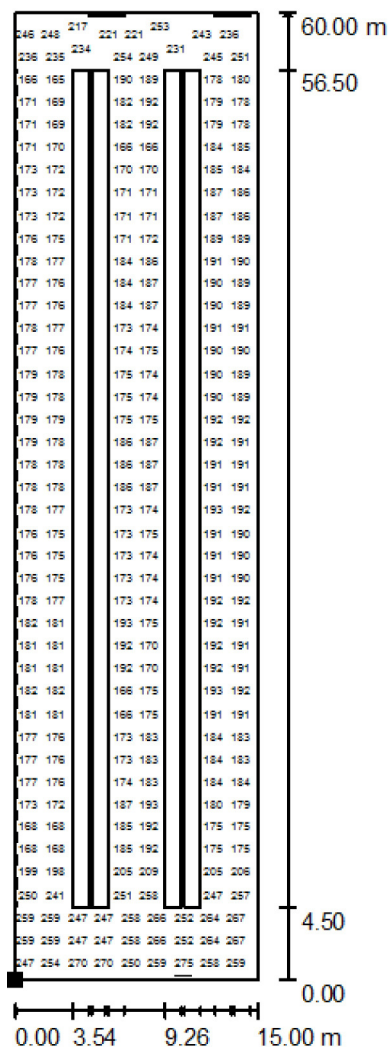
Position of surface in room:
 Marked point:
 (53.000 m, 7.500 m, 1.000 m)



Grid: 64 x 128 Points

E_{av} [lx]	E_{min} [lx]	E_{max} [lx]	u0	E_{min} / E_{max}
190	41	275	0.216	0.150

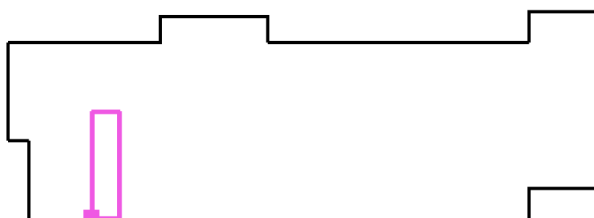
Warehouse / Calculation Surface - Rack Section / Value Chart (E, Perpendicular)



Values in Lux, Scale 1 : 470

Not all calculated values could be displayed.

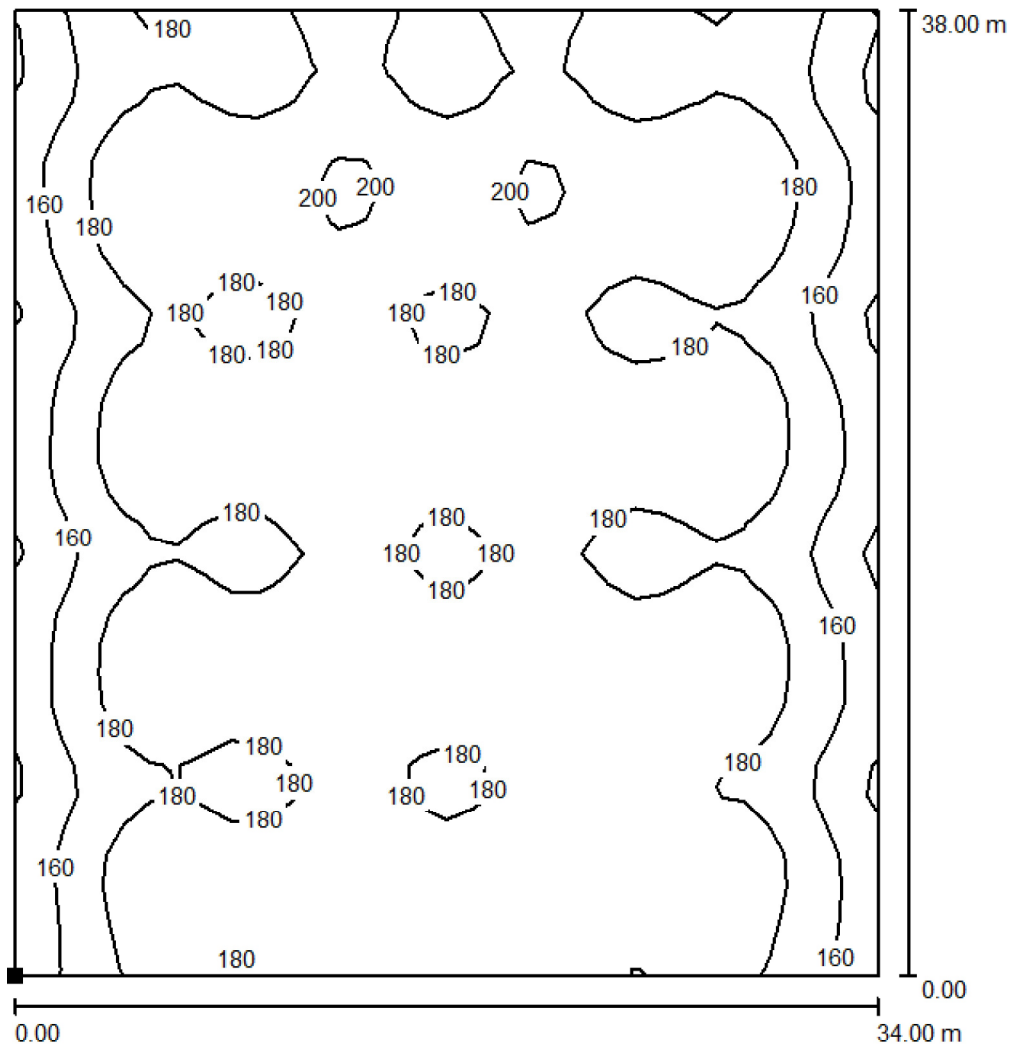
Position of surface in room:
Marked point:
(53.000 m, 7.500 m, 1.000 m)



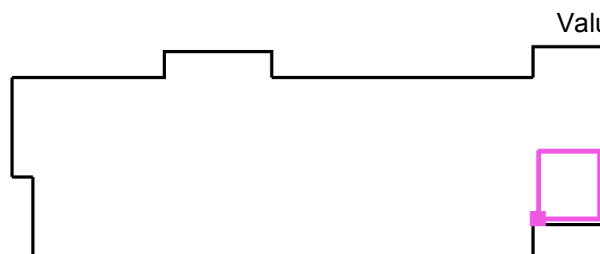
Grid: 64 x 128 Points

E_{av} [lx]	E_{min} [lx]	E_{max} [lx]	u_0	E_{min} / E_{max}
190	41	275	0.216	0.150

Warehouse / Calculation Surface - Low Pallets Room / Isolines (E, Perpendicular)



Position of surface in room:
Marked point:
(300.000 m, 27.500 m, 1.000 m)

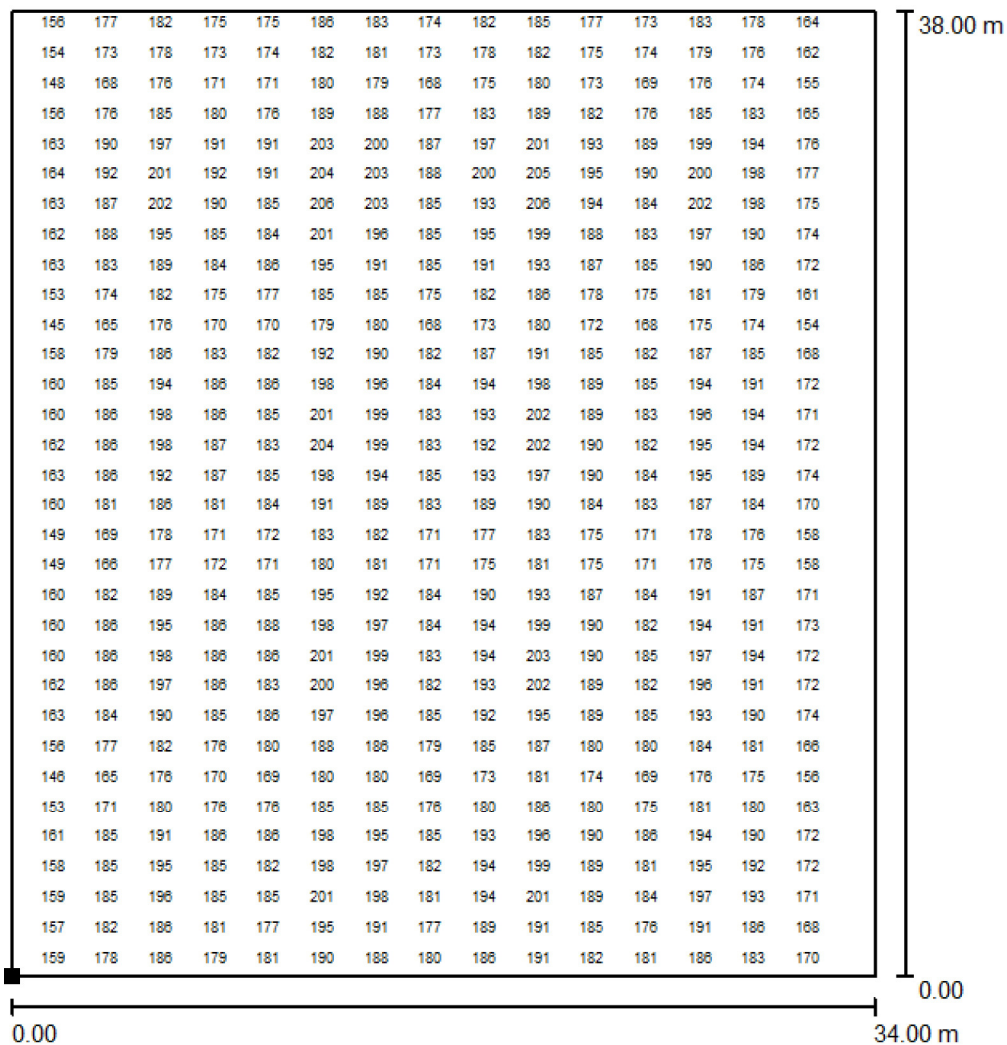


Values in Lux, Scale 1 : 298

Grid: 32 x 32 Points

E_{av} [lx]	E_{min} [lx]	E_{max} [lx]	u0	E_{min} / E_{max}
180	131	207	0.728	0.634

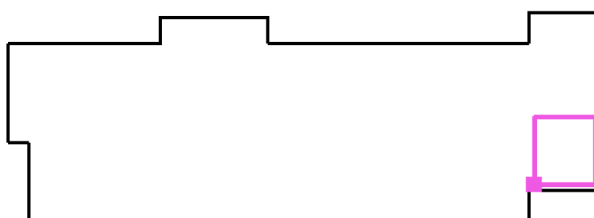
Warehouse / Calculation Surface - Low Pallets Room / Value Chart (E, Perpendicular)



Values in Lux, Scale 1 : 298

Not all calculated values could be displayed.

Position of surface in room:
Marked point:
(300.000 m, 27.500 m, 1.000 m)



Grid: 32 x 32 Points

E_{av} [lx]
180

E_{min} [lx]
131

E_{max} [lx]
207

u0
0.728

E_{min} / E_{max}
0.634