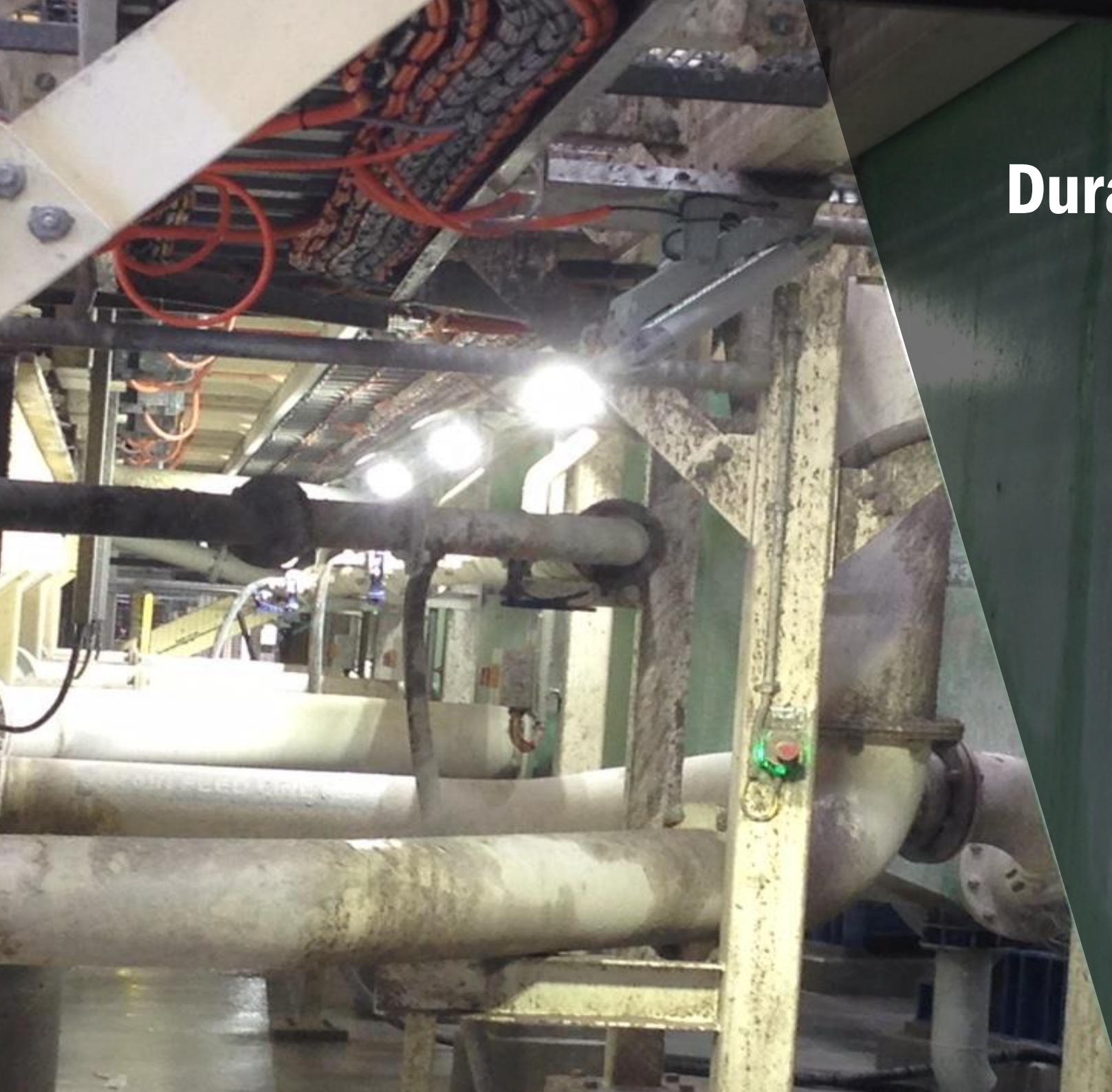




EmpyreanTM
LIGHTING

7 REASONS TO CHOOSE THE **ANDROMEDATM RANGE FOR INDUSTRIAL APPLICATIONS**



1.

Durable & Robust

IP66 & IK08 shock
resistant frame

Rugged Low Profile
Construction

Superior Thermal
Management using
convection & conduction
around diodes.

Operating temperatures
from -50°C to 55°C

Small lens area reducing
salt or dust build up

Self/easy cleaning with
power hose or rain if
external units



2. Cost Savings

Andromeda™ luminaires uses 50-70% less electricity than high intensity discharge luminaires.

Typically replacing 400W Metal Halide / Mercury Vapour lights with 150W Andromeda™ luminaires

Heat Load reduction (HVAC savings)

A photograph of three construction workers in a high-contrast, industrial setting. They are wearing hard hats (blue and red) and high-visibility safety vests (yellow and orange). They are gathered around a table, looking at a large set of blueprints. One worker is pointing at a specific area on the plans. The background shows structural elements of a building under construction, including yellow scaffolding and concrete beams.

3.

Less Maintenance

60,000hours+ (to L70) lifespans –
~11yrs at 12hrs per day

Quick release drivers with IP65
connections for efficient
maintenance

Ability to remote mount the drivers
up to 50m away from the luminaire

Built in redundancies to ensure a
single pixel failure will not
compromise the luminaire's
performance



4. Versatile

ARTICULATION – multiple frame styles using pixel rail technology (Flood, Street, Park, Linear, High Bay, High Mast)

LENSING – over 30 IESNA lens options with varying beam angles to suit any application

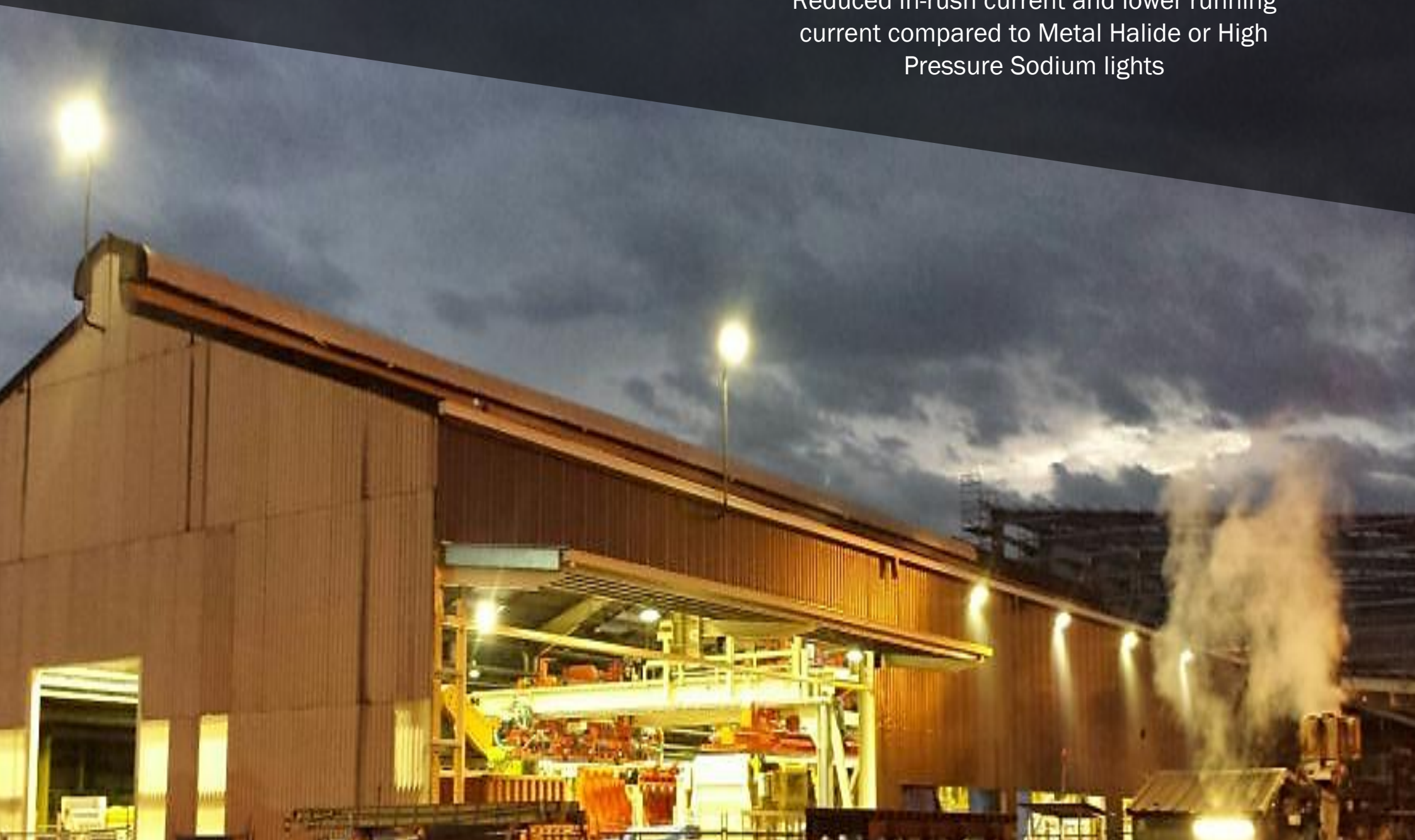
CCT/WAVELENGTHS – can be designed to emit light in virtually the entire spectrum (from UV to IR)

MATERIALS – standard AL6063 (marine grade aluminium) frames or 316SS (Stainless Steel) options

5. Instant Start Up

No restrike time with instant on/off

Reduced in-rush current and lower running current compared to Metal Halide or High Pressure Sodium lights



6.

Compatible & Customisable

Ability to work with most control systems, ideal for motion sensing, photo sensing and dimming

Dimming with 0-10V, PWM & DALI

Optional driver voltages from 24VDC to 417VAC

Battery back-up available for all Andromeda™ luminaires

Various mounting options including surface mount and recess



7. 100% Australian Owned

Australian based with head office in Birtinya, Sunshine Coast QLD

Member of the Lighting Council of Australia

Strong focus on research and development





EmpyreanTM
LIGHTING

empyreanlighting.com

CONTACT

p 1300 200 321 / +61 7 5437 7270

a CAPITAL ONE BUILDING

Level 2, 11/9 Capital Place
Birtinya Q 4551
AUSTRALIA

e info@empyreanlighting.com

© Copyright Empyrean Lighting