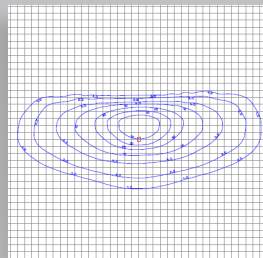
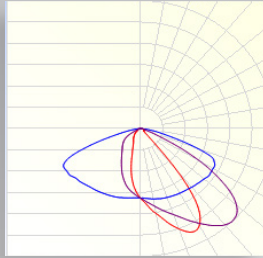
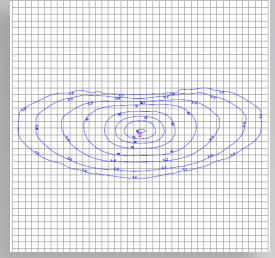
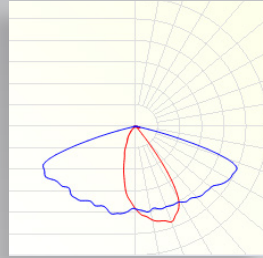


STREET/PATH LIGHTING

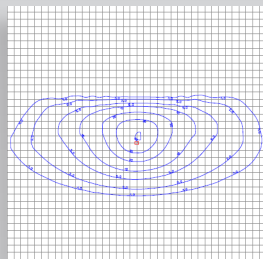
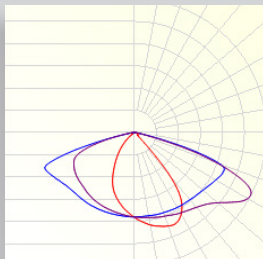
LENS KB: 145° - 48°



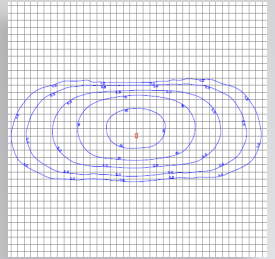
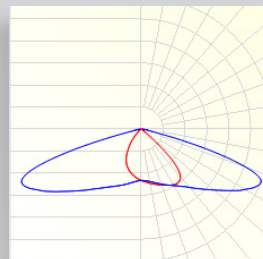
LENS K16: 150° - 50°



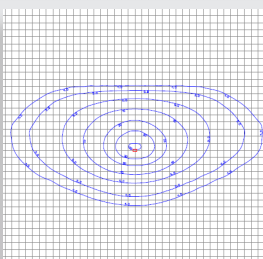
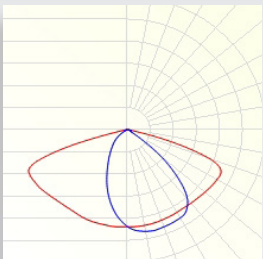
LENS K05: 150° - 60°



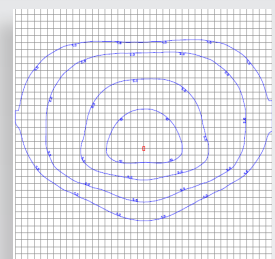
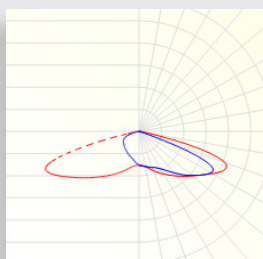
LENS K01: 148° - 91°



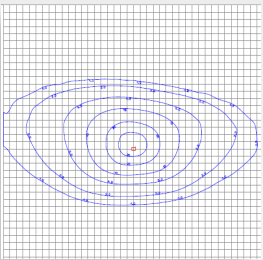
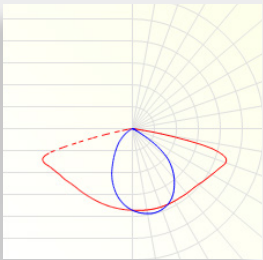
LENS K21: 147° - 70°



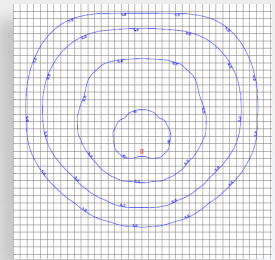
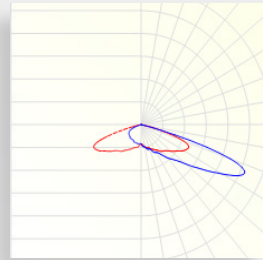
LENS K30: 148° - 68°



LENS K24: 154° - 78°



LENS K10: 147° - 23°

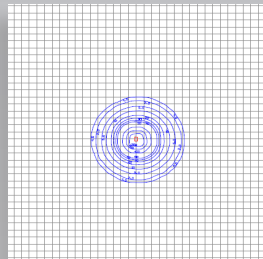
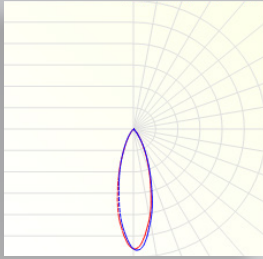


IESNA Types

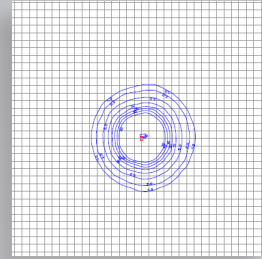
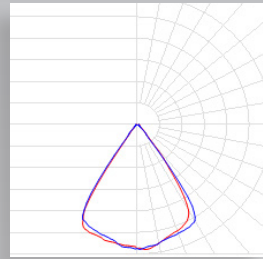
I	II	III	IV	V
KB	K01	K30	K10	K14
K05	K21			K18
K13	K24			K81
K16	TM			LE
K64				

GENERAL LIGHTING

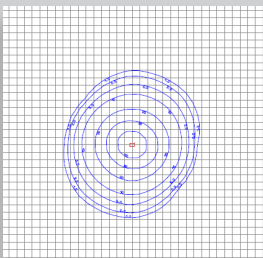
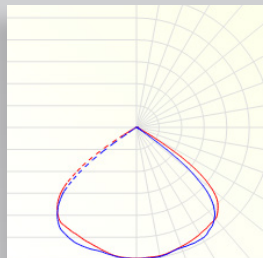
LENS K29: 30°



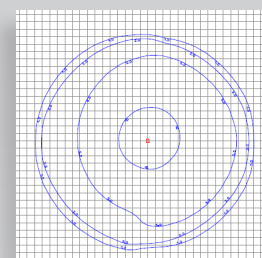
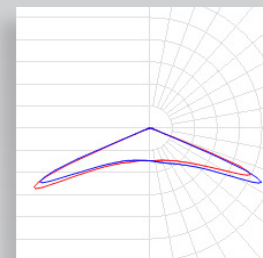
LENS LE: 61°



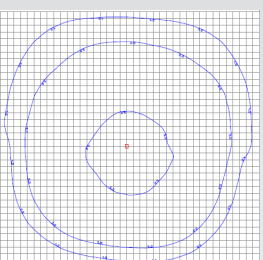
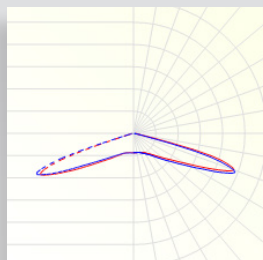
LENS K81: 102°



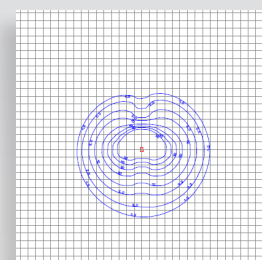
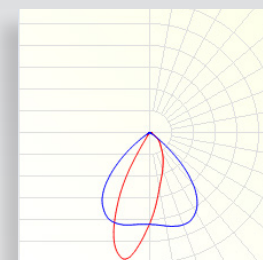
LENS K14: 132°



LENS K18: 146°

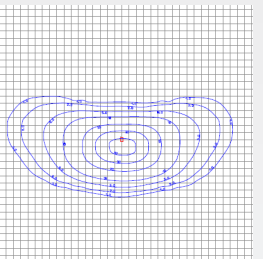
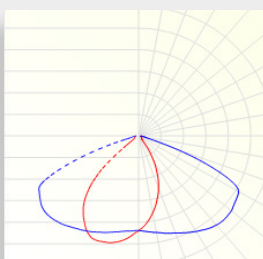


LENS K64: 92° - 28°



TUNNEL LIGHTING

LENS K13: 135° - 60°



LENS TM: 144° - 79°

