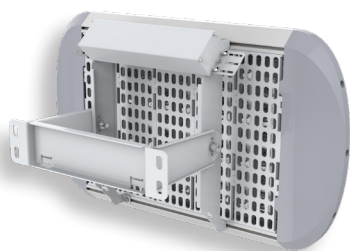


# Andromeda™ C Mounting Options

CERAMIC LUMINAIRES

## Standard (Wall Mount)

Standard adjustable wall/ceiling mount bracket on Flood. Bracket material options - ST12, 304SS, 316SS.



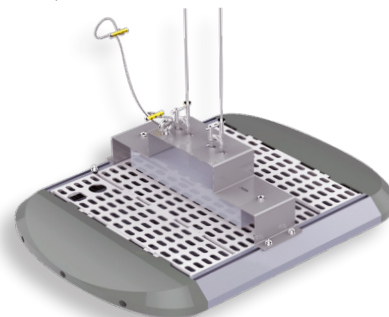
## FLOOD Canopy (Surface Mount)

Flat surface bracket for mounting directly to ceiling, stud or wall. Bracket material options - ST12, 304SS, 316SS.



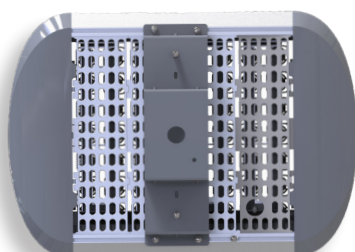
## Suspension (Hooks)

Dual ST12 hooks attached to the surface bracket for suspension mounting. Bracket material options - ST12, 304SS, 316SS.



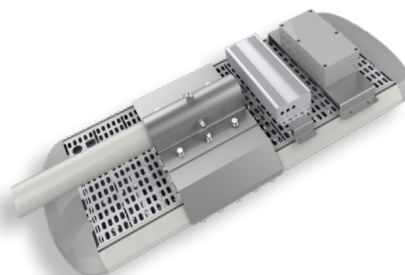
## Rod Mount

Mounting bracket suitable for rod mounting with a threaded 3/4 inch pipe. Bracket material options - ST12, 304SS, 316SS.



## Slip Fit

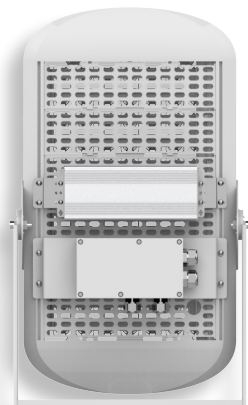
Pole fitted sleeve for Andromeda Flood units. Non adjustable. 60mmOD Pole/Arm Spigot not included. Bracket material options - ST12, 304SS, 316SS.



## HIGH MAST

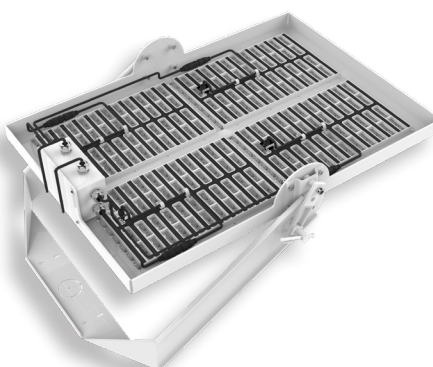
### Trunnion

Heavy duty adjustable trunnion mount for High Mast luminaire. Suitable for cross beams and wall mounting. Bracket material options - ST12, 304SS & 316SS.



### Forward Bracket

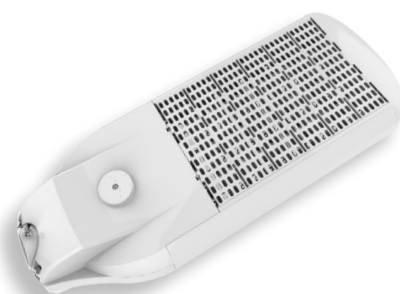
Bracket for 1000W High Mast luminaire suitable for forward throw mounting on cross beams. Bracket material options - ST12, 304SS & 316SS.



## POLE MOUNT

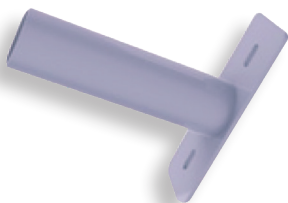
### Standard (Pole Mount)

Standard adjustable pole mount to pole diameter 60mm. Adapters available for other diameters.



SHIELD OR BLIND OPTIONS ARE AVAILABLE FOR ALL LUMINAIRES WITH ANY MOUNTING BRACKET. CONTACT EMPYREAN LIGHTING TO DISCUSS REQUIREMENTS

## POLE MOUNT WALL THIN

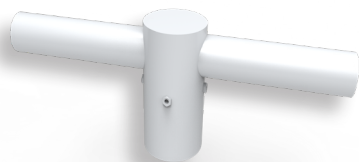


## POLE MOUNT SLEEVE

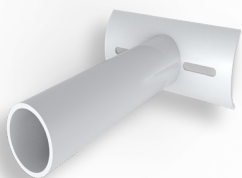
Pole top range 33.7mm/ 48mm



## POLE MOUNT DUAL



## POLE CURVE EXTENDED



## POLE MOUNT WALL THICK

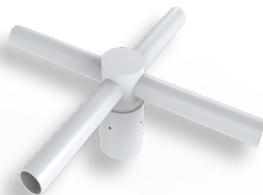


## POLE MOUNT SLEEVE

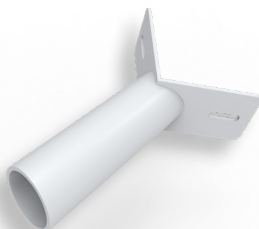
Pole top range 48mm-100mm



## POLE MOUNT QUAD



## POLE MOUNT CORNER

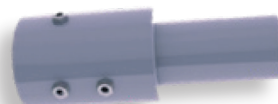


## POLE MOUNT TOP



## POLE MOUNT SLEEVE

Pole top range 100mm-150mm



## POLE MOUNT CURVE

