

AndromedaTM

CUSTOM APPLICATION LED DESIGN





ANDROMEDA CUSTOM RANGE

WITH ALL THE BENEFITS of our standard Andromeda™ Series, our custom range includes luminaires specifically designed and modified for use in unusual or challenging environments.

WORKING CLOSELY with experts in these fields our aim is to surpass the performance of traditional technology, while providing a more efficient, green and safe luminaire.

THE DEVELOPMENT of additional custom Andromeda™ luminaires is the cornerstone of our research and development program, and we welcome ideas and collaborations for your next project.

OUR RANGE INCLUDES

AQUARIUM
GROW LIGHTS
TURTLE SAFE LUMINAIRES



Andromeda™ C Aqua

HIGH POWER 10,000K CCT LED



PRODUCT INFORMATION

PRODUCT CODE

Andromeda-C-Aqua

DIMENSIONS

	Length	Width	Depth	Weight
160W	417mm	360mm	130mm	9 kg
320W	787mm	360mm	129.5mm	13.5 kg

INGRESS PROTECTION

IP66

LIGHT SOURCE

Nichia High Power LED

HOUSING

6063 Aluminium (Marine Grade)

Ceramic Diode Seat with Polycarbonate Rails

ST12

BRACKET MATERIAL

Wall Mount, Surface Mount, Suspended with Rods

BRACKET TYPE

Silver

FRAME COLOUR

MECHANICAL IMPACT RESISTANCE

IK08 (Bracket & Frame Only)

IP RATING

IP66

OPERATING TEMPERATURE

-40°C to +55°C

TECHNICAL SPECIFICATIONS

INPUT VOLTAGE

90-305VAC, 50/60Hz

LIFESPAN

50,000 hours to L70

POWER

160W & 320W

DIMMABLE

5-100% - 0-10V, DALI

BEAM ANGLE

* Variable based on Lens

LUMINOUS EFFICACY

110lm/W

POWER FACTOR

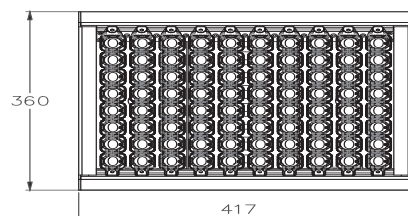
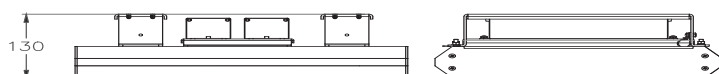
>0.97

CCT

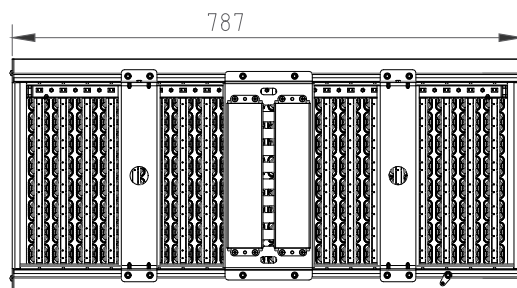
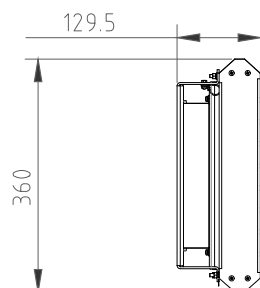
10,000K

* FOR LENS OPTIONS SEE LENS PAGE IN ANDROMEDA™ CERAMIC SECTION

SCHEMATIC OF ANDROMEDA-C-AQUA 160W



SCHEMATIC OF ANDROMEDA-C-AQUA 320W



OUTPUT

WATTS	LUMENS
160W	17,600 lm
320W	35,200 lm

APPLICATIONS



NebulaTM Multi & Linear

FIXED CCT VARIABLE CONTROL LED



PRODUCT INFORMATION

DIMENSIONS

		Length	Width	Depth	Weight
Multi	20W	120mm	107mm	180mm	2.5kg
	40W	268mm	203mm	161mm	3.8kg
	60W	293mm	203mm	161mm	5.0kg
	80W	418mm	203mm	161mm	10.2kg
	100W	518mm	203mm	161mm	12.0kg
Linear	18W	600mm	70mm	121mm	3.2kg
	24W	1000mm	70mm	121mm	4.5kg
	36W	1200mm	70mm	121mm	5.9kg

INGRESS PROTECTION

IP66

LIGHT SOURCE

Nichia High Power LED

HOUSING

Aluminium alloy and adjustable mounting brackets

BRACKET MATERIAL

ST12

BRACKET TYPE

Wall Mount, Surface Mount

FRAME COLOUR

Silver, Black

MECHANICAL IMPACT RESISTANCE

IK08 (Bracket & Frame Only)

IP RATING

IP66

OPERATING TEMPERATURE

-40°C to +55°C

TECHNICAL SPECIFICATIONS

INPUT VOLTAGE

90-305VAC, 50/60Hz

LIFESPAN

50,000 hours to L70

POWER

Multi - 20W, 40W, 60W, 80W, 100W
Linear - 18W, 24W, 36W

POWER FACTOR

>0.97

DIMMABLE

5-100% - DALI & DMX 512 for RGB

BEAM ANGLE

Multi - 10°, 40° (20W only), 40° Elongated
Linear - 10°, 15°, 25°, 30°, 50°

CCT

Multi	5,000-5,500K Cool White*
	4,000-4,500K Natural White
	2,700-3,000K Warm White
	RGB or Blue
Linear	5,000-5,500K Cool White
	4,000-4,500K Natural White
	RGB or Blue



Nebula Multi 40W

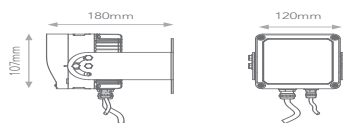


Nebula Multi 20W

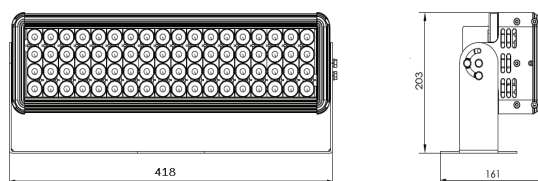


Nebula Linear 18W

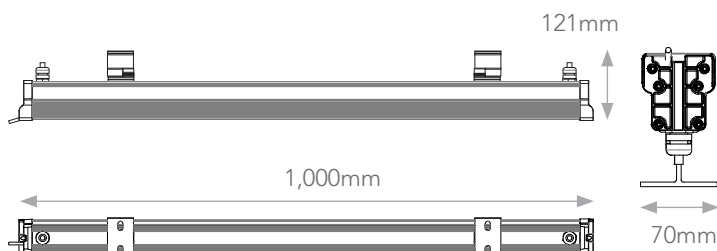
SCHEMATIC OF NEBULA MULTI 20W



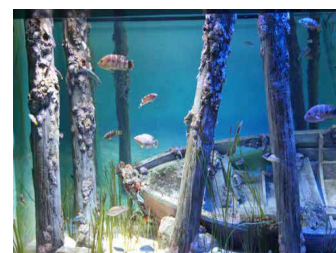
SCHEMATIC OF NEBULA MULTI 80W



SCHEMATIC OF NEBULA LINEAR 24W



APPLICATIONS





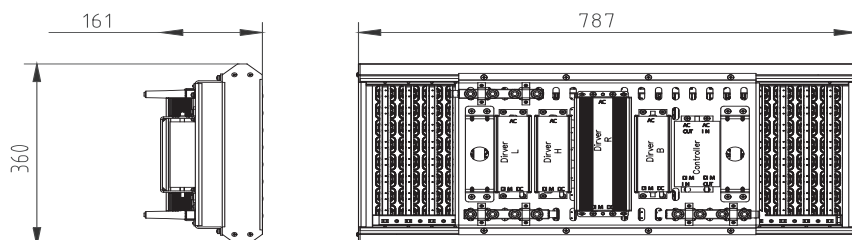
PRODUCT INFORMATION

PRODUCT CODE	Andromeda-GrowFlood-420W
DIMENSIONS	787mmL x 360mmW x 161mmD
INGRESS PROTECTION	IP65
WEIGHT	16kg
LIGHT SOURCE	High Power Osram LED Diodes
LENS	High or Low Ceiling
HOUSING	AL 6063 (Aluminium Marine Grade)
BRACKET MATERIAL	Steel (ST12)
FRAME COLOUR	Silver
WARRANTY	5yrs

TECHNICAL SPECIFICATIONS

INPUT VOLTAGE	90V-305VAC, 50/60Hz
DIMMABLE	Yes - On/Off & Full Luminaire Control with RS485 Controller
LIFESPAN	50,000 hours (to L70/B10)
POWER	420W
POWER FACTOR	>0.97
PHOTON FLUX	1258.25 / 1247.19 (μ mol/s)
PHOTON FLUX EFFICACY	3.045 / 3.072 (μ mol/J)
OPERATING TEMPERATURE	-40°C to +55°C

SCHEMATIC OF ANDROMEDA-GROWFLOOD-420W



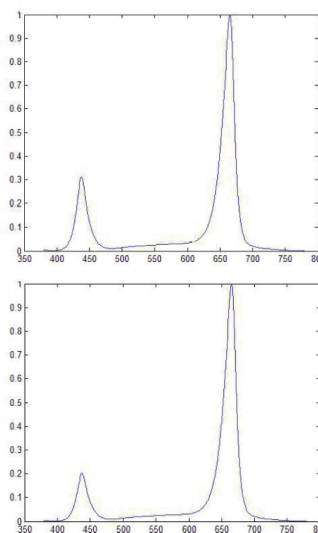
SPECTRAL OPTIONS

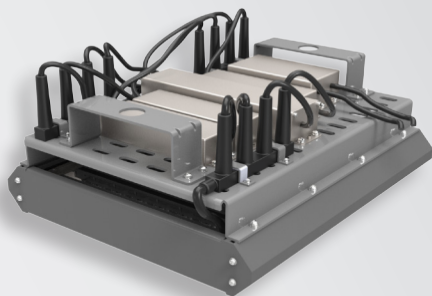
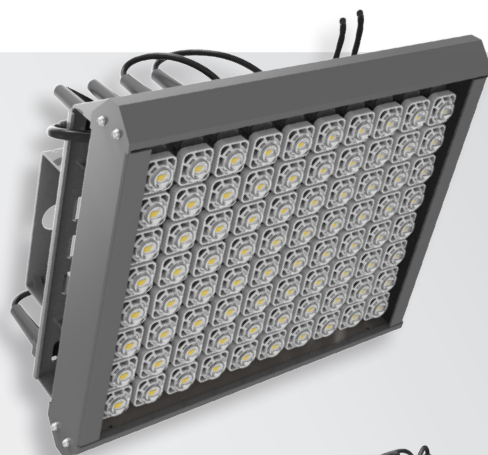
3 x Blue 8 watt rails (450nm)
 13 x Red 8 watt rails (640nm)
 2 x White 8 watt rails (6,000K)
 2 x Warm 8 watt rails (3,000K)

Blue (400-499)	20.39%
Green (500-599)	6.82%
Red (600-699)	71.25%
Infrared (700-780)	1.54%

2 x Blue 8 watt rails (450nm)
 14 x Red 8 watt rails (640nm)
 2 x White 8 watt rails (6,000K)
 2 x Warm 8 watt rails (3,000K)

Blue (400-499)	14.89%
Green (500-599)	6.84%
Red (600-699)	76.65%
Infrared (700-780)	1.62%





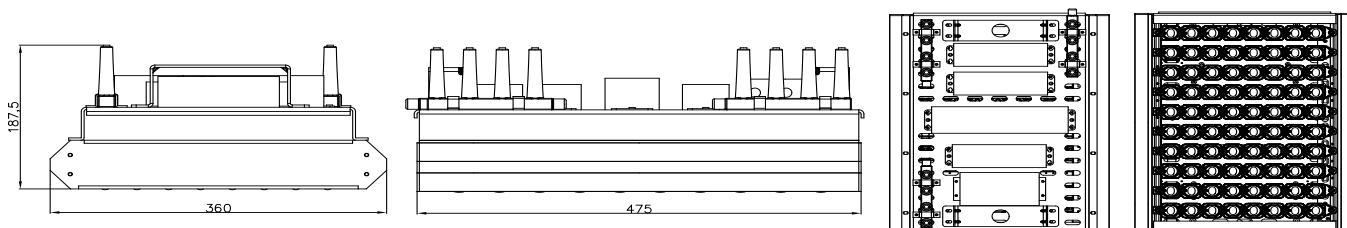
PRODUCT INFORMATION

PRODUCT CODE	Andromeda-GrowFlood-210W
DIMENSIONS	475mmL x 360mmW x 187.5mmD
INGRESS PROTECTION	IP65
WEIGHT	9kg
LIGHT SOURCE	High Power Osram LED Diodes
LENS	High or Low Ceiling
HOUSING	AL 6063 (Aluminium Marine Grade)
BRACKET MATERIAL	Steel (ST12)
FRAME COLOUR	Silver
WARRANTY	5yrs

TECHNICAL SPECIFICATIONS

INPUT VOLTAGE	90V-305VAC, 50/60Hz
DIMMABLE	Yes - On/Off & Full Luminaire Control with RS485 Controller
LIFESPAN	50,000 hours (to L70/B10)
POWER	210W
POWER FACTOR	>0.97
PHOTON FLUX	623.6 / 551.88 (μ mol/s)
PHOTON FLUX EFFICACY	3.072 / 2.52 (μ mol/J)
OPERATING TEMPERATURE	-40°C to +55°C

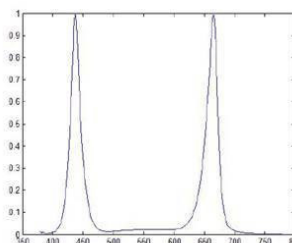
SCHEMATIC OF ANDROMEDA-GROWFLOOD-210W



SPECTRAL OPTIONS

4 x Blue 8 watt rails (450nm)
5 x Red 8 watt rails (640nm)
1 x White 8 watt rails (6,000K)

Blue (400-499)	44.91%
Green (500-599)	4.03%
Red (600-699)	50.22%
FarRed (700-780)	0.84%



1 x Blue 8 watt rails (450nm)
7 x Red 8 watt rails (640nm)
1 x White 8 watt rails (6,000K)
1 x Warm 8 watt rails (3,000K)

Blue (400-499)	14.89%
Green (500-599)	6.84%
Red (600-699)	76.65%
Infrared (700-780)	1.62%

