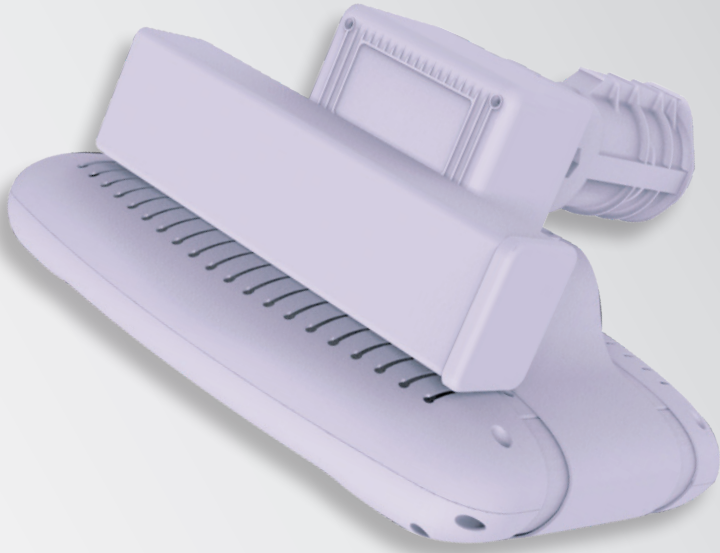


Andromeda™ Emergency

HIGH INTENSITY BACK-UP LUMINAIRE



AndromedaXPB-EMPark

PRODUCT INFORMATION

PRODUCT CODE	AndromedaXPB-EM
LIGHT SOURCE	Nichia High Power LED
HOUSING	6063 Aluminium (Marine Grade)
BRACKET MATERIAL	ST12, Custom (304SS, 316SS)
FRAME COLOUR	Silver, White, Black, Custom (Advise RAL)
CONTROL	DALI, PWM, 0-10V, PE Cell, NEMA 7
MECHANICAL IMPACT RESISTANCE	IK08 (Bracket & Frame Only)
IP RATING	IP66
OPERATING TEMP	-50°C to 55°C

TECHNICAL SPECIFICATIONS

INPUT VOLTAGE	85V-264VAC, 50/60Hz (Standard) Options - 24VDC, 127-370VDC or 313-381VAC
LIFESPAN	60,000 hours L70 B10
POWER	21W - 480W
BEAM ANGLE	Customisable - Refer to lens options page
POWER FACTOR	0.97
CCT*	5,000-5,500K Cool White >65 (CRI) Standard 4,000-4,500K Natural White >75 (CRI) 2,700-3,000K Warm White >80 (CRI)

*OTHER CCT OPTIONS AVAILABLE



AndromedaXPB-EMLinearMotion

FEATURES

- COMPLIES WITH AS 2293.3:2005
- MAINTAINED OR NON-MAINTAINED OPTIONS AVAILABLE
- ON BOARD BATTERY SYSTEM
- EASY TO ACCESS TEST BUTTON
- FULL LED LUMINAIRE
- CAN BE FITTED TO MOST ANDROMEDA™ LUMINAIRES

TYPICAL APPLICATIONS

