

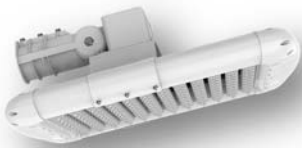


**Emily Seebom Aquatic Centre in Fitzgibbon QLD**

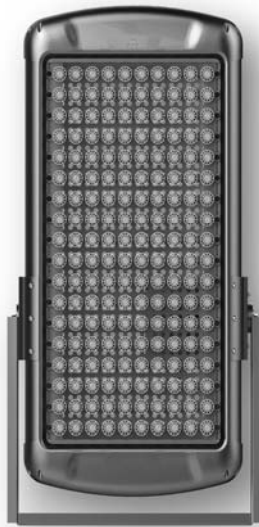
## LED SOLUTIONS



**Andromeda™ Flood**



**Andromeda™ Park**



**Andromeda™ High Mast**

The newly built Gympie Aquatic Recreation Centre also features our Andromeda™ luminaires to illuminate the Olympic sized outdoor swimming pool. As the facility is within 50km of the ocean, our luminaires were ideal in ensuring the coastal environment did not impact the performance or lifespan.

Our Andromeda™ range of luminaires are beating the elements in both indoor and outdoor aquatic centres!

Indoor and outdoor aquatic centres are typically highly corrosive environments. High salinity from saltwater pools or oceanside locations, combined with significant chlorine levels, requires a purpose designed lighting solution for this challenging environment.

Our Andromeda™ series of luminaires are manufactured with AL6063 marine grade aluminium and double powder coated with polyester. Materials used throughout our luminaires are chosen based on their resistance to corrosive environments, and rigorous testing ensures our products perform to expectations.



**Gympie Aquatic Recreation Centre**



*The versatility of our Andromeda range (with over 9,000 varieties) ensures that there is always an Andromeda™ luminaire suitable for corrosive and challenging applications.*