

# Andromeda<sup>TM</sup>

IECEX | ANZEX

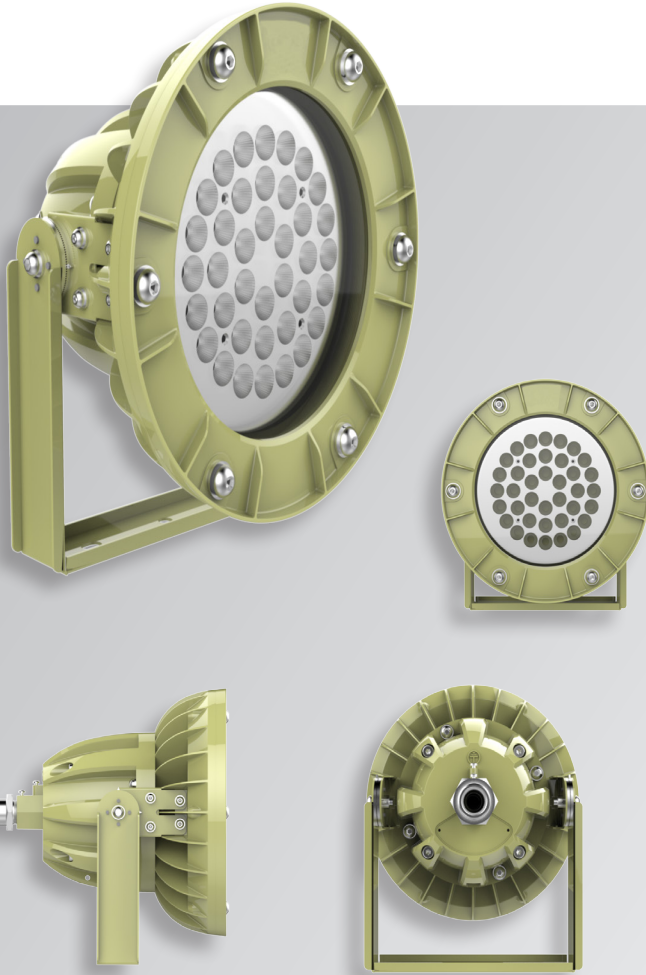
HAZLOC APPLICATIONS



# Andromeda™ Ex

HAZLOC IECEx ANZEx CERTIFIED

NICHIA ⚡ 🔧 IP68 65 L70 0.95 ♻️  
 HIGH POWER 85-264VAC SHOCK RESISTANT RATING CRI 50,000 HRS POWER FACTOR



## PRODUCT INFORMATION

### IECEx & ANZEx CERTIFICATION

Ex db op is IIC T6 Gb, Ex op is tb IIIC T80°C Db IP68.

IEC 60079-0:2011 Ed. 6  
IEC 60079-1:2014 Ed. 7  
IEC 60079-28:2015 Ed. 2  
IEC 60079-31:2013 Ed. 2

LIGHT SOURCE  
LENS

Nichia High Power LED  
Narrow & Wide

HOUSING & BRACKET MATERIAL  
FRAME COLOUR

Aluminium Alloy Grade 12 (ADC12) Beige (Ral1001)

CONTROL

0-10V / PWM / DALI

MECHANICAL IMPACT RESISTANCE

IK09

IP RATING

IP68

OPERATING TEMP

-40°C to 50°C

WARRANTY

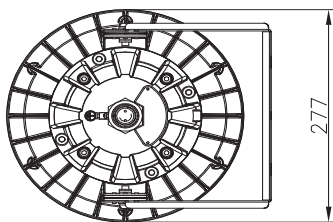
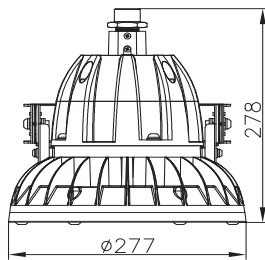
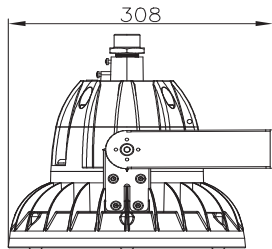
5 years

## TECHNICAL SPECIFICATIONS

INPUT VOLTAGE	85-264VAC, 50/60Hz
DIMMABLE	Optional
POWER FACTOR	0.95
LIFESPAN	50,000 hours to L70
POWER	30W, 60W & 80W
BEAM ANGLE	60° Narrow & 120° Wide
LUMINOUS EFFICACY	95 lm/W 100lm/W*
INPUT CURRENT	600mA
CCT	5,000 Cool White >65 (CRI)

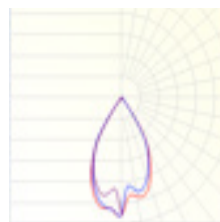
\*Output table below for 100lm/W with 120° Wide beam angle. Also available in ~3000K (>80 CRI) Warm White CCT & additional powers.

## SCHEMATIC OF 30W & 80W



POWER	OUTPUT* (LUMENS)	DIAMETER (MM)	DEPTH (MM)	WEIGHT (KG)
30W	3,000	277	278	4.3
60W	6,000	277	278	4.3
80W	8,000	277	278	4.3

## NARROW BEAM 60°



## WIDE BEAM 120°



## PRODUCT CODE BUILDER

PRODUCT	POWER	INSTALLATION
Andromeda-EXD	30W	-X (Ceiling)
	60W	-F (Flange)
	80W	-H (Guardrail)
		-D (Derrick)
		-B1 (Wall Mount 30°)
		-B2 (Wall Mount 90°)
	-Z (Adjustable Bracket - Bracket Required)	