

EmpyreanTM
LIGHTING

2018/19
Collection

Welcome to the 2018/19 Empyrean Lighting™ Catalogue



We're an award winning, Australian based company who designs, manufactures and supplies ultra-high quality LED lighting solutions for a variety of applications worldwide.

Being at the forefront of the LED revolution, we specialise in design and control and can provide a customised, personal and professional approach for any lighting requirement. We are committed to the continual innovation, research and development of LED technology.



Empyrean Lighting HQ, Capital One Building, Birtinya QLD

OUR MISSION. OUR VISION. OUR VALUES. OUR PROMISE.

Our Mission:

Green Efficient Safe.

Our mission at Empyrean Lighting™ is to protect our planet and improve our quality of life by presenting an efficient, green and safe lighting alternative to the worldwide market.

Our Vision:

At Empyrean Lighting™ we have set our sight on being one of the pre-eminent LED lighting designers and distributors in the world. No small feat considering the traditional nature of the lighting industry.

As LED specialists we ensure our finger is on the pulse of this dynamic technology and that we are playing an active role in its development and proliferation.

Our Values:

Empyrean Lighting™ is a company strengthened by its core values. While we pride ourselves on our modern thinking, cutting edge technology and business practices, we proudly uphold traditional standards of conduct and ethics throughout our organisation.

Simple courtesies like politeness, respect, mutual trust and customer satisfaction are paramount in even our most basic of interactions. Our goal is to be a company with whom it is a pleasure to do business.

Our Values:

Inherent to Empyrean Lighting™ is our commitment to transparency. We use expert staff to compile and deliver in-depth financial and environmental analysis to clients to ensure expectations are set legitimately. And through our dedication to product quality we further guarantee these expectations are met.



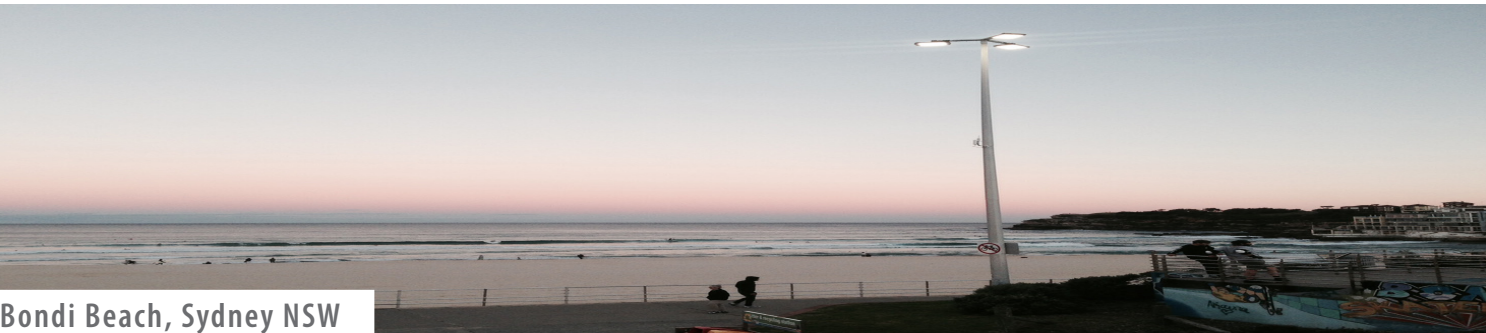
Sunshine Coast University Stadium. QLD



Glencore Xstrata MacArthur River Mine, NT



Morwell Bowls Club, VIC



Bondi Beach, Sydney NSW

*Andromeda*TM c

CERAMIC LED SERIES





ANDROMEDA CERAMIC RANGE

OUR ANDROMEDA™ CERAMIC SERIES has been designed to compete with low cost LED luminaires. We've reduced the amount of aluminium used in the frame and utilised ceramic heatsink materials in our patented pixel rails.

Our Andromeda™ Ceramic Series features unparalleled thermal management which guarantees performance and lifespan. The versatility in this range is possible through multiple options in output, articulation, frame material, colour and CCT. There is literally an Andromeda™ for every application!

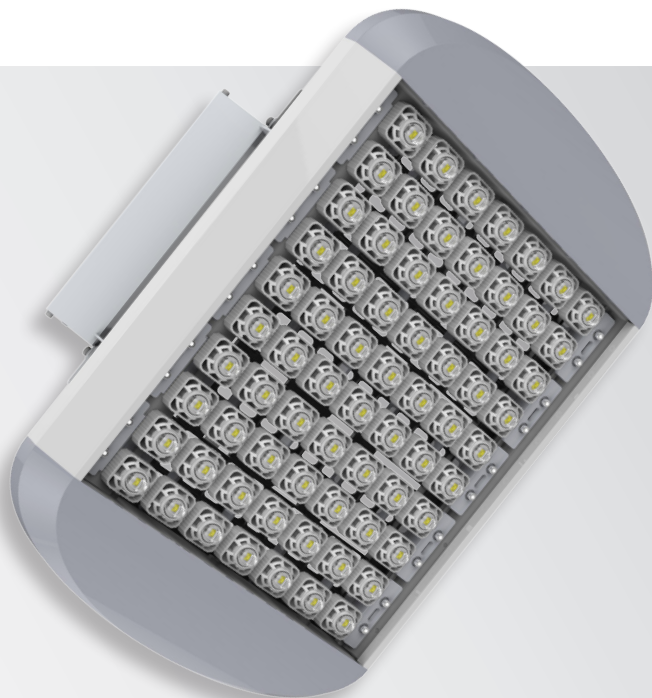
BENEFITS OF OUR RANGE

- USES 50%-75% LESS ELECTRICITY THAN HIGH INTENSITY DISCHARGE LUMINAIRES
- LIFESPAN OF 60,000 HRS+ (TO L70)
- IS IP66
- IS AVAILABLE IN SPECIFIC POWER AND LENS TYPES FOR GENERAL APPLICATION AREAS
- START UP AND SHUT DOWN IMMEDIATELY.
- PERFECT FOR PHOTO SENSOR OR MOTION SENSOR CONTROLS
- HAS LOW INRUSH & OPERATING CURRENTS
- CONTAINS NO HARMFUL OR TOXIC SUBSTANCES (NO HG)
- DOES NOT EMIT UV RADIATION & DOES NOT REQUIRE UV BLOCKING FILTERS
- HAS ROBUST CONSTRUCTION, PERFECT FOR TOUGH & CHALLENGING CONDITIONS
- ELIMINATES MERCURY RECYCLING COSTS



Andromeda™ C Flood

CERAMIC LED FLOODLIGHT



PRODUCT INFORMATION

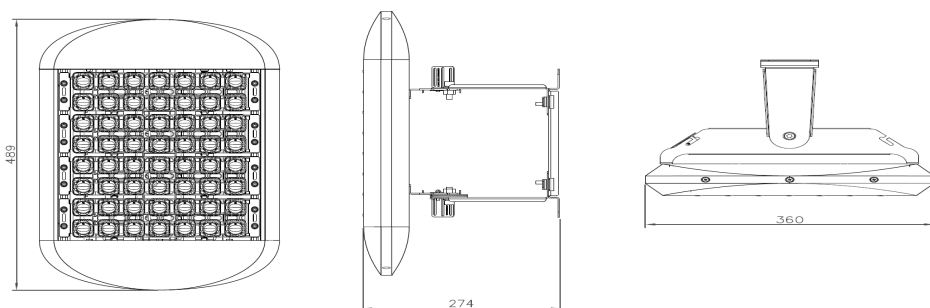
LIGHT SOURCE	Nichia High Power LED
HOUSING	6063 Aluminium (Marine Grade) Ceramic Diode Seat with Polycarbonate Pixel Rails
BRACKET MATERIAL	ST12
BRACKET TYPE	Wall Mount, Surface Mount, Suspended (Hook)
FRAME COLOUR	Silver, White
MECHANICAL IMPACT RESISTANCE	IK10
IP RATING	IP66
OPERATING TEMP	-40°C to 55°C

TECHNICAL SPECIFICATIONS

INPUT VOLTAGE	90-305VAC, 50/60Hz (Standard)
DIMMABLE	Non-dimmable standard
LIFESPAN	60,000 hours to L70 B10
POWER	40W - 410W
POWER FACTOR	0.95
BEAM ANGLE	Distribution Ranges - Refer to lens options page IESNA Type I,II,III, IV & V distribution
LUMINOUS EFFICACY	120 lm/W
CCT	5,000-5,500K Cool White >70 (CRI) Standard

Additional Options - Frame options 304SS & 316SS. Dimmable with 0-10V, PWM, DALI, PE Cell or Nema 7. Varying input voltage including 24V DC to 480V. CCT Options - ~4000K Natural White & ~3000K Warm White.

SCHEMATIC OF ANDROMEDA C FLOOD 140W & 165W



PRODUCT CODE	POWER	OUTPUT (LUMENS)	INPUT CURRENT (mA)	LENGTH (MM)	WIDTH (MM)	DEPTH (MM)	WEIGHT (KG)
Andromeda-C-Flood-40	40W	4,800	800mA	261	360	274	4.2kg
Andromeda-C-Flood-45	45W	5,400	800mA	261	360	274	4.5kg
Andromeda-C-Flood-70	70W	8,400	800mA	337	360	274	5.1kg
Andromeda-C-Flood-85	85W	10,200	800mA	337	360	274	5.5kg
Andromeda-C-Flood-110	110W	13,200	800mA	413	360	274	5.9kg
Andromeda-C-Flood-125	125W	15,000	800mA	413	360	274	6.3kg
Andromeda-C-Flood-140	140W	16,800	800mA	489	360	274	6.7kg
Andromeda-C-Flood-165	165W	19,800	800mA	489	360	274	7.2kg
Andromeda-C-Flood-180	180W	21,600	800mA	565	360	274	8.3kg
Andromeda-C-Flood-210	210W	25,200	800mA	565	360	274	8.6kg
Andromeda-C-Flood-220	220W	26,400	800mA	641	360	274	9.2kg
Andromeda-C-Flood-250	250W	30,000	800mA	641	360	274	10.4kg
Andromeda-C-Flood-280	280W	33,600	800mA	717	360	274	12.0kg
Andromeda-C-Flood-320	320W	38,400	800mA	869	360	274	14.8kg
Andromeda-C-Flood-360	360W	43,200	800mA	945	360	274	15.0kg
Andromeda-C-Flood-370	370W	44,400	800mA	869	360	274	15.3kg
Andromeda-C-Flood-410	410W	49,200	800mA	945	360	274	16.1kg

TYPICAL APPLICATIONS



Andromeda™ C Pole Mount

CERAMIC POLE MOUNT LED LUMINAIRE



PRODUCT INFORMATION

LIGHT SOURCE HOUSING

Nichia High Power LED
6063 Aluminium (Marine Grade)
Ceramic Diode Seat with Polycarbonate Pixel Rails
ST12

BRACKET MATERIAL BRACKET TYPE

Pole Mount 60mm Outer Diameter with Adjustable
Angle Mount -10° to 15° & Secure Point Cable

FRAME COLOUR MECHANICAL IMPACT RESISTANCE IP RATING OPERATING TEMP

Silver, White
IK10
IP66
-40°C to 70°C

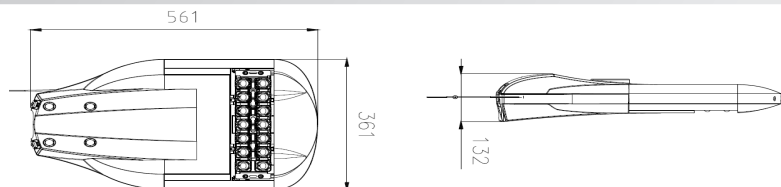
TECHNICAL SPECIFICATIONS

INPUT VOLTAGE DIMMABLE LIFESPAN POWER POWER FACTOR BEAM ANGLE

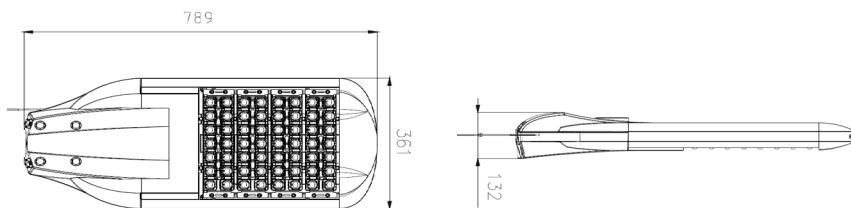
90-305VAC, 50/60Hz (Standard)
Non-dimmable standard
60,000 hours to L70 B10
40W - 250W
0.95
Distribution Ranges - Refer to lens options page
IESNA Type I,II,III, IV & V distribution
120 lm/W
5,000-5,500K Cool White >70 (CRI) Standard

Additional Options - Frame options 304SS & 316SS. Dimmable with 0-10V, PWM, DALI, PE Cell or Nema 7. Varying input voltage including 24V DC to 480V. CCT Options - ~4000K Natural White & ~3000K Warm White.

SCHEMATIC OF ANDROMEDA C POLE 70W & 85W



SCHEMATIC OF ANDROMEDA C POLE 140W & 160W



PRODUCT CODE	POWER	OUTPUT* (LUMENS)	INPUT CURRENT (mA)	LENGTH (MM)	WIDTH (MM)	DEPTH (MM)	WEIGHT (KG)
Andromeda-C-PoleM-40	40W	4,800	800mA	561	361	132	8.3kg
Andromeda-C-PoleM-45	45W	5,400	800mA	561	361	132	8.5kg
Andromeda-C-PoleM-70	70W	8,400	800mA	637	361	132	9.4kg
Andromeda-C-PoleM-85	85W	10,200	800mA	637	361	132	9.5kg
Andromeda-C-PoleM-110	110W	13,200	800mA	713	361	132	10.0kg
Andromeda-C-PoleM-125	125W	15,000	800mA	713	361	132	10.6kg
Andromeda-C-PoleM-140	140W	16,800	800mA	789	361	132	11.0kg
Andromeda-C-PoleM-160	160W	19,200	800mA	789	361	132	11.6kg
Andromeda-C-PoleM-180	180W	21,600	800mA	865	361	132	12.0kg
Andromeda-C-PoleM-210	210W	25,200	800mA	865	361	132	12.5kg
Andromeda-C-PoleM-220	220W	26,400	800mA	941	361	132	13.0kg
Andromeda-C-PoleM-250	250W	30,000	800mA	941	361	132	13.8kg

TYPICAL APPLICATIONS



Andromeda™ C Pole Mount

SMALL CERAMIC POLE MOUNT LED LUMINAIRES



PRODUCT INFORMATION

LIGHT SOURCE HOUSING

Nichia High Power LED
6063 Aluminium (Marine Grade)
Ceramic Diode Seat with Polycarbonate Pixel Rails
ST12

BRACKET MATERIAL BRACKET TYPE FRAME COLOUR MECHANICAL IMPACT RESISTANCE IP RATING OPERATING TEMP

Pole Mount 60mm Diameter
Silver, White, Black
IK10
IP66
-40°C to 70°C

TECHNICAL SPECIFICATIONS

INPUT VOLTAGE DIMMABLE LIFESPAN POWER POWER FACTOR BEAM ANGLE

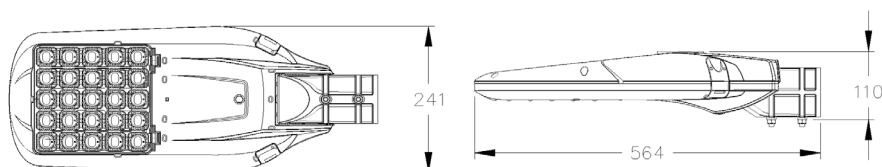
90-305VAC, 50/60Hz (Standard)
Non-dimmable standard
50,000 hours to L70
20W, 25W, 30W
0.95
Customisable - Refer to lens options page
IESNA Type I,II,III, IV & V distribution
120 lm/W (Cool & Natural White)
110lm/W (Warm White)
5,000-5,500K Cool White >70 (CRI) Standard

LUMINOUS EFFICACY

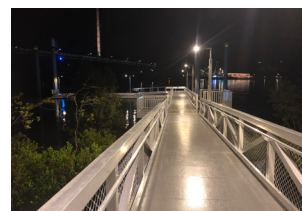
CCT

Additional Options - Frame options 304SS & 316SS. Dimmable with 0-10V, DALI, PE Cell or Nema 7.
Varying input voltage including 24V DC to 480V. CCT Options - ~4000K Natural White & ~3000K Warm

SCHEMATIC OF 20W/25W/30W



TYPICAL APPLICATIONS



Andromeda™ C Linear

CERAMIC LED LINEAR FLOODLIGHTS



PRODUCT INFORMATION

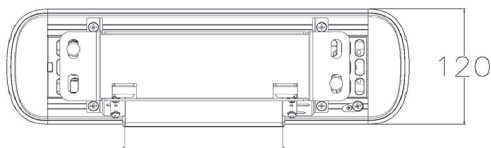
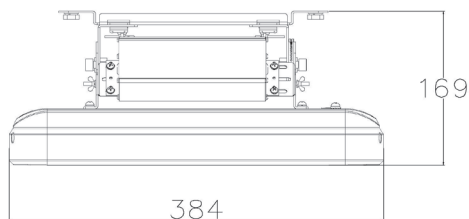
LIGHT SOURCE	Nichia High Power LED
HOUSING	6063 Aluminium (Marine Grade) Ceramic Diode Seat with Polycarbonate Pixel Rails
BRACKET MATERIAL	ST12
BRACKET TYPE	Wall Mount/Surface Mount (Adjustable)
FRAME COLOUR	Silver, White, Black
MECHANICAL IMPACT RESISTANCE	IK10
IP RATING	IP66
OPERATING TEMP	-40°C to 55°C

TECHNICAL SPECIFICATIONS

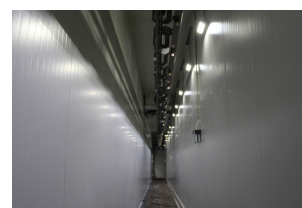
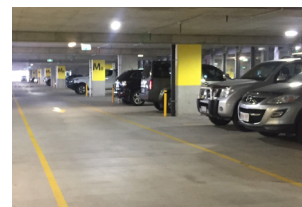
INPUT VOLTAGE	90-305VAC, 50/60Hz (Standard)
DIMMABLE	Non-dimmable standard
LIFESPAN	60,000 hours to L70 B10
POWER	40W - 125W
POWER FACTOR	0.95
BEAM ANGLE	Distribution Ranges - Refer to lens options page IESNA Type I, II, III, IV & V distribution
LUMINOUS EFFICACY	120 lm/W
CCT	5,000-5,500K Cool White >70 (CRI) Standard

Additional Options - Frame options 304SS & 316SS. Dimmable with 0-10V, PWM, DALI, PE Cell or Nema 7. Varying input voltage including 24V DC to 480V. CCT Options - ~4000K Natural White & ~3000K Warm White.

SCHEMATIC OF ANDROMEDA C LINEAR 40W & 45W



TYPICAL APPLICATIONS



PRODUCT CODE	POWER	OUTPUT* (LUMENS)	INPUT CURRENT (mA)	LENGTH (MM)	WIDTH (MM)	DEPTH (MM)	WEIGHT (KG)
Andromeda-C-Linear-40	40W	4,400	800mA	384	120	169	2.6kg
Andromeda-C-Linear-45	45W	5,400	800mA	384	120	169	2.6kg
Andromeda-C-Linear-70	70W	8,400	800mA	552	120	169	3.6kg
Andromeda-C-Linear-85	85W	10,200	800mA	552	120	169	3.7kg
Andromeda-C-Linear-110	110W	13,200	800mA	990	120	169	6.7kg
Andromeda-C-Linear-125	125W	15,000	800mA	990	120	169	6.8kg

Andromeda™ C Linear

CERAMIC LED LINEAR FLOODLIGHTS



PRODUCT INFORMATION

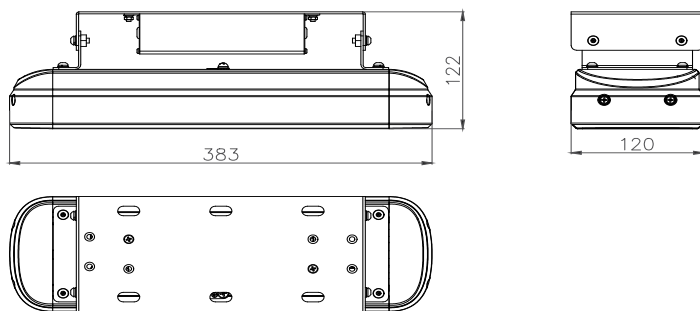
LIGHT SOURCE	Nichia High Power LED
HOUSING	6063 Aluminium (Marine Grade) Ceramic Diode Seat with Polycarbonate Pixel Rails
BRACKET MATERIAL	ST12
BRACKET TYPE	Low Profile - Wall Mount or Surface Mount
FRAME COLOUR	Silver, White, Black
MECHANICAL IMPACT RESISTANCE	IK10
IP RATING	IP66
OPERATING TEMP	-40°C to 55°C

TECHNICAL SPECIFICATIONS

INPUT VOLTAGE	90-305VAC, 50/60Hz (Standard)
DIMMABLE	Non-dimmable standard
LIFESPAN	60,000 hours to L70 B10
POWER	40W - 125W
POWER FACTOR	0.95
BEAM ANGLE	Distribution Ranges - Refer to lens options page IESNA Type I,II,III, IV & V distribution
LUMINOUS EFFICACY	120 lm/W
CCT	5,000-5,500K Cool White >70 (CRI) Standard

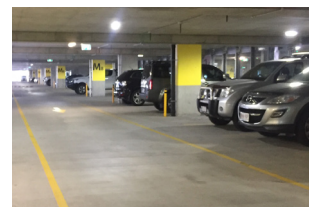
Additional Options - Frame options 304SS & 316SS. Dimmable with 0-10V, PWM, DALI, PE Cell or Nema 7. Varying input voltage including 24V DC to 480V. CCT Options - ~4000K Natural White & ~3000K Warm White.

SCHEMATIC OF ANDROMEDA C LINEAR LOW PROFILE BRACKET 40W & 45W



PRODUCT CODE	POWER	OUTPUT* (LUMENS)	INPUT CURRENT (mA)	LENGTH (MM)	WIDTH (MM)	DEPTH (MM)	WEIGHT (KG)
Andromeda-C-Linear-40	40W	4,400	800mA	383	120	122	2.6kg
Andromeda-C-Linear-45	45W	5,400	800mA	383	120	122	2.6kg
Andromeda-C-Linear-70	70W	8,400	800mA	552	120	122	3.6kg
Andromeda-C-Linear-85	85W	10,200	800mA	552	120	122	3.7kg
Andromeda-C-Linear-110	110W	13,200	800mA	990	120	122	6.7kg
Andromeda-C-Linear-125	125W	15,000	800mA	990	120	122	6.8kg

TYPICAL APPLICATIONS





PRODUCT INFORMATION

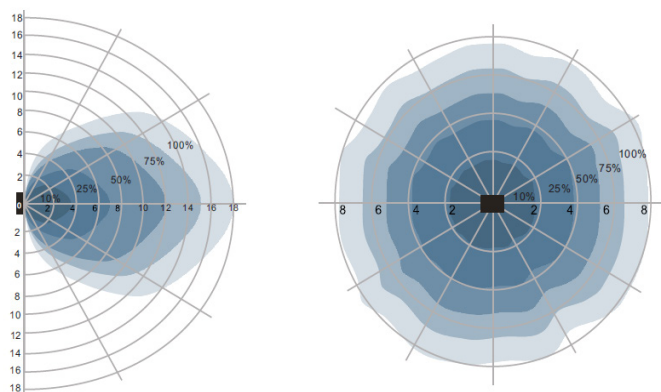
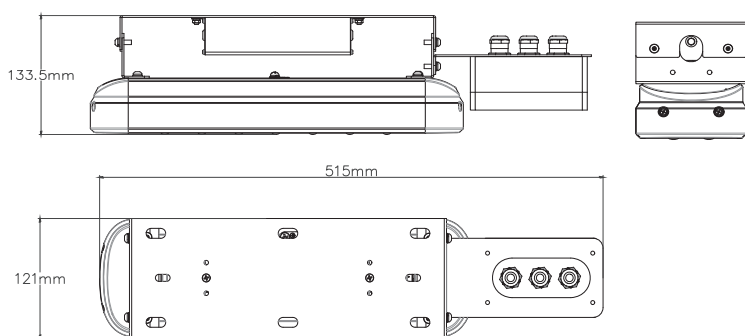
LIGHT SOURCE	Nichia High Power LED
HOUSING	6063 Aluminium (Marine Grade) Ceramic Diode Seat with Polycarbonate Pixel Rails
BRACKET MATERIAL	ST12
BRACKET TYPE	Low Profile - Wall Mount or Surface Mount
FRAME COLOUR	Silver, White, Black
MECHANICAL IMPACT RESISTANCE	IK10
IP RATING	IP66
OPERATING TEMP	-40°C to 55°C

TECHNICAL SPECIFICATIONS

INPUT VOLTAGE	90-305VAC, 50/60Hz (Standard)
DIMMABLE	Yes
MOTION SENSOR	Microwave
OPERATING INTERVAL	15 secs to 10 mins
LIFESPAN	60,000 hours to L70 B10
POWER	40W
POWER FACTOR	0.95
BEAM ANGLE	Distribution Ranges - Refer to lens options page IESNA Type I,II,III, IV & V distribution
LUMINOUS EFFICACY	120 lm/W
CCT	5,000-5,500K Cool White >70 (CRI) Standard

Additional Options - Frame options 304SS & 316SS. Varying input voltage including 24V DC to 480V. CCT Options - ~4000K Natural White & ~3000K Warm White.

SCHEMATIC OF ANDROMEDA C LINEAR MOTION SENSOR 40W



FEATURES

- INCREASED SAVINGS WITH SENSOR TECHNOLOGY
- MAINTAINED SECURITY LEVELS (PARTICULARLY FOR CAMERAS)
- SUITABLE FOR GENERAL PARKING, AISLES, RAMPS, BAYS, LIFTS, FOYERS & STAIRWELLS
- CUSTOMISABLE SENSOR SETTINGS TO SUIT APPLICATION
- AVAILABLE FOR ANY POWER OR CCT ANDROMEDA CERAMIC LINEAR LUMINAIRE
- CUSTOMISABLE MOUNTING BRACKET TO SUIT EXISTING HOLES

MICROWAVE MOTION SENSOR

RATED LOAD	800W (inductive), 1,200W (resistive)
HF SYSTEM	5.8GHz +- 75Mhz, ISM wave band
TRANSMITTING BAND	<0.5mW
POWER CONSUMPTION	<0.5W (Standby), <1W (Operation)
DETECTION ZONE	Max (D x H): 16m x 10m 2.7m = 8m Diameter Radius
DETECTION SENSITIVITY	10% / 25% / 50% / 75% / 100%
HOLD TIME	10s / 30s / 90s / 3min / 20min / 30min
DAYLIGHT SENSOR	5lux / 10lux / 30lux / 50lux / Disable
STANDBY PERIOD	5s / 5min / 10min / 30min / 1h / Disable
STANDBY DIMMING LEVEL	10% / 20% / 30% / 40% / 50%
MOUNTING HEIGHT	10m Max
MOTION DETECTION	0-5m ~ 3m/s
DETECTION ANGLE	150° (Wall Installation) 360° (Ceiling Installation)

Andromeda™ C High Mast

CERAMIC LED HIGH MAST LUMINAIRE



PRODUCT INFORMATION

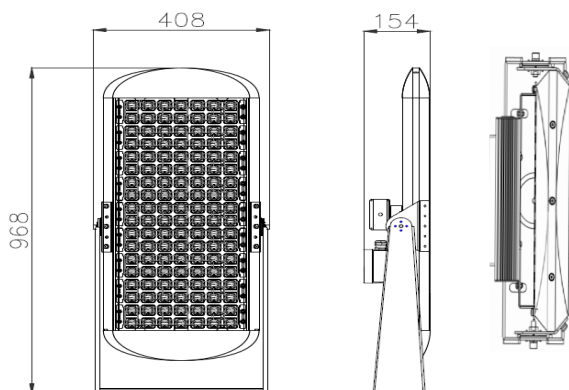
LIGHT SOURCE	Nichia High Power LED
HOUSING	6063 Aluminium (Marine Grade) Ceramic Diode Seat with Polycarbonate Pixel Rails
BRACKET MATERIAL	ST12
BRACKET TYPE	Trunnion Arm
FRAME COLOUR	Silver, White, Black
MECHANICAL IMPACT RESISTANCE	IK10
IP RATING	IP66
OPERATING TEMP	-40°C to 55°C

TECHNICAL SPECIFICATIONS

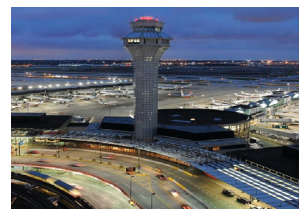
INPUT VOLTAGE	90-305VAC, 50/60Hz (Standard), Varying input available from 24V DC to 480V.
DIMMABLE	Non-dimmable standard
LIFESPAN	60,000 hours to L70 B10
POWER	140W - 410W
POWER FACTOR	0.95
BEAM ANGLE	Distribution Ranges - Refer to lens options page
LUMINOUS EFFICACY	IESNA Type I, II, III, IV & V distribution
CCT	120 lm/W 5,000-5,500K Cool White >70 (CRI) Standard

Additional Options - Frame options 304SS & 316SS. Dimmable with 0-10V, PWM, DALI, PE Cell or Nema 7.
CCT Options - ~4000K Natural White & ~3000K Warm White.

SCHEMATIC OF ANDROMEDA C HMAST 360W & 410W



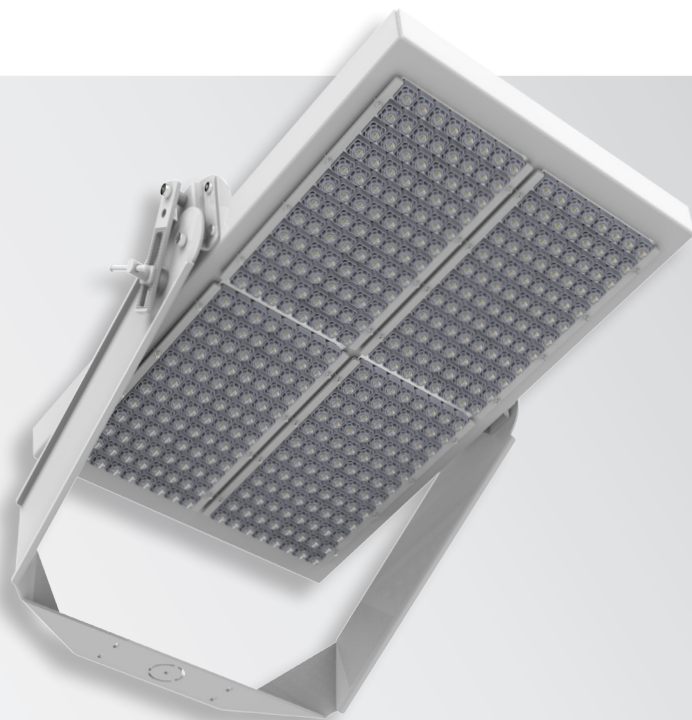
TYPICAL APPLICATIONS



PRODUCT CODE	POWER	OUTPUT (LUMENS)	INPUT CURRENT (mA)	LENGTH (MM)	WIDTH (MM)	DEPTH (MM)	WEIGHT (KG)
Andromeda-C-HMast-140	140W	16,800	800mA	516	408	154	10.2kg
Andromeda-C-HMast-160	160W	19,200	800mA	516	408	154	10.9kg
Andromeda-C-HMast-180	180W	21,600	800mA	589	408	154	11.4kg
Andromeda-C-HMast-210	210W	25,200	800mA	589	408	154	11.7kg
Andromeda-C-HMast-220	220W	26,400	800mA	665	408	154	12.5kg
Andromeda-C-HMast-250	250W	30,000	800mA	743	408	154	13.0kg
Andromeda-C-HMast-280	280W	33,600	800mA	819	408	154	14.9kg
Andromeda-C-HMast-320	320W	38,400	800mA	892	408	154	16.5kg
Andromeda-C-HMast-360	360W	43,200	800mA	968	408	154	17.2kg
Andromeda-C-HMast-370	370W	44,400	800mA	892	408	154	18.0kg
Andromeda-C-HMast-410	410W	49,200	800mA	968	408	154	18.5kg

Andromeda™ C High Mast

CERAMIC LED HIGH MAST LUMINAIRE



HIGH POWER 90-305VAC SHOCK RESISTANT RATING



PRODUCT INFORMATION

LIGHT SOURCE
HOUSING

BRACKET MATERIAL
BRACKET TYPE
FRAME COLOUR
MECHANICAL IMPACT RESISTANCE
DRIVER MOUNTING

IP RATING
OPERATING TEMP

TECHNICAL SPECIFICATIONS

INPUT VOLTAGE

DIMMABLE

LIFESPAN

POWER

POWER FACTOR

BEAM ANGLE

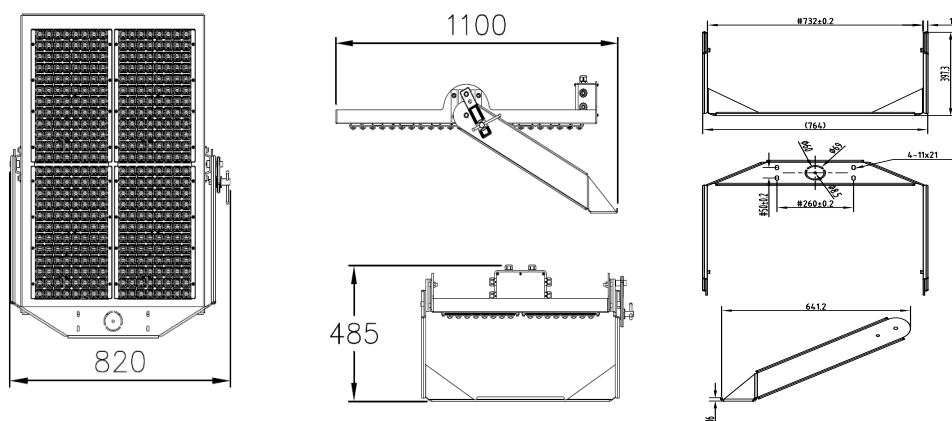
LUMINOUS EFFICACY
CCT

Nichia High Power LED
6063 Aluminium (Marine Grade)
Ceramic Diode Seat with Polycarbonate Pixel Rails
ST12
Trunnion Arm
Silver, White, Black
IK10
4 x Drivers per Light. Remote mounted at base of pole internally. Optional external waterproof enclosure for exterior pole mounting.
IP66
-40°C to 55°C

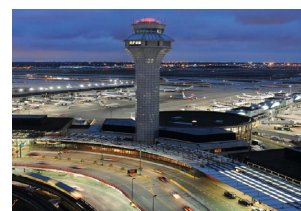
90-305VAC, 50/60Hz (Standard), Varying input available from 24V DC to 480V.
Non-dimmable standard
60,000 hours to L70 B10
1000W
0.97
Distribution Ranges - Refer to lens options page
IESNA Type I,II,III, IV & V distribution
120 lm/W
5,000-5,500K Cool White >70 (CRI) Standard

Additional Options - Frame options 304SS & 316SS. Dimmable with 0-10V, PWM, DALI, PE Cell or Nema 7.
CCT Options - ~4000K Natural White & ~3000K Warm White.

SCHEMATIC OF ANDROMEDA C HMAST 1000W + BRACKET



TYPICAL APPLICATIONS



PRODUCT CODE

POWER

OUTPUT
(LUMENS)

INPUT
CURRENT (mA)

LENGTH
(MM)

WIDTH
(MM)

DEPTH
(MM)

WEIGHT
(KG)

Andromeda-C-HMAst-1000

1000W

120,000

800mA

1100

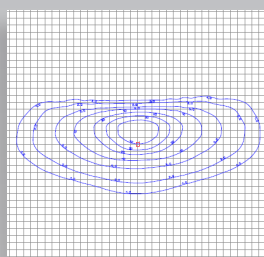
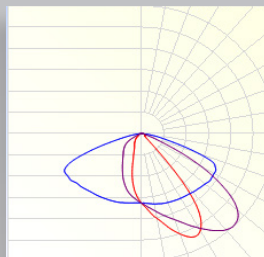
820

4854

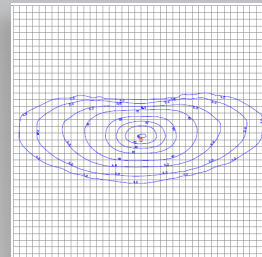
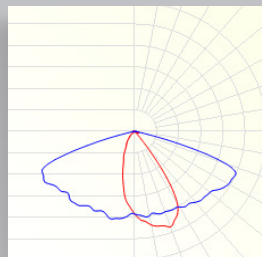
67kg

STREET/PATH LIGHTING

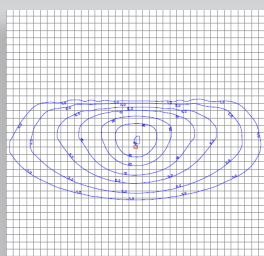
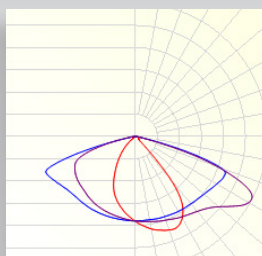
LENS KB: 145° - 48°



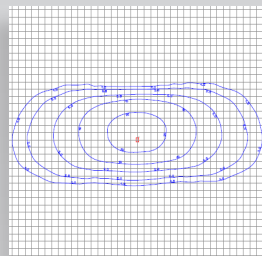
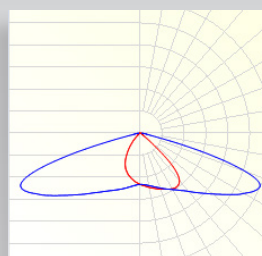
LENS K16: 150° - 50°



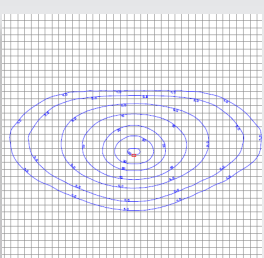
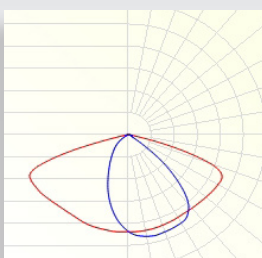
LENS K05: 150° - 60°



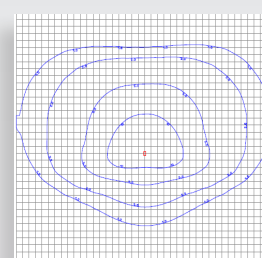
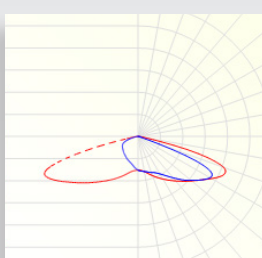
LENS K01: 148° - 91°



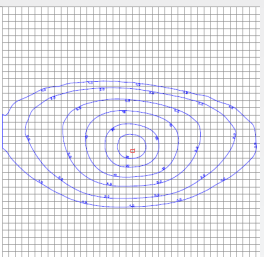
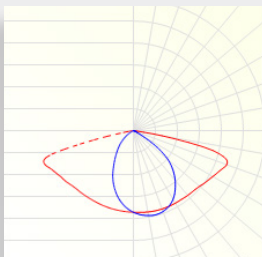
LENS K21: 147° - 70°



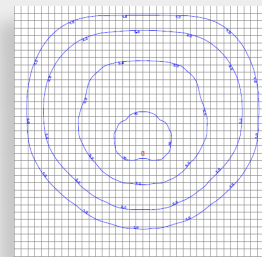
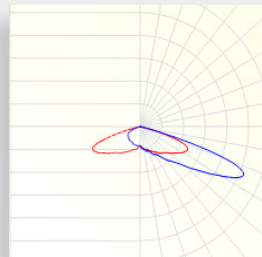
LENS K30: 148° - 68°



LENS K24: 154° - 78°



LENS K10: 147° - 23°

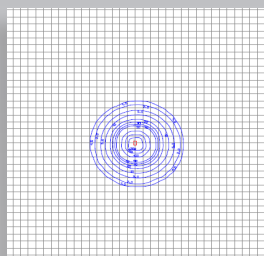
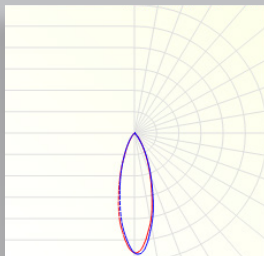


IESNA Types

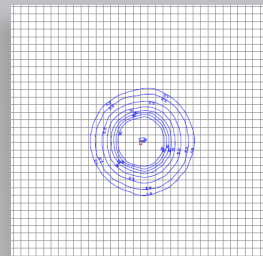
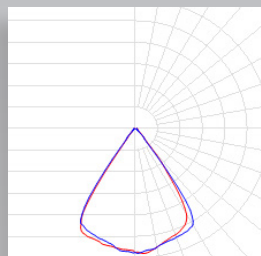
I	II	III	IV	V
KB	K01	K30	K10	K14
K05	K21			K18
K13	K24			K81
K16	TM			LE
K64				

GENERAL LIGHTING

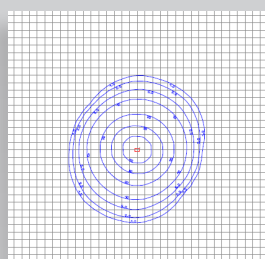
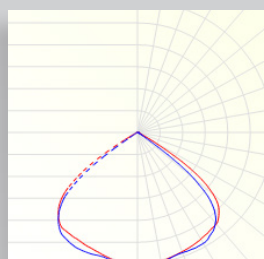
LENS K29: 30°



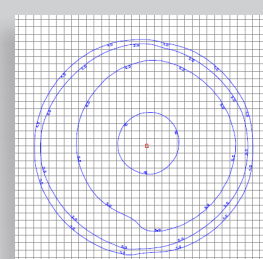
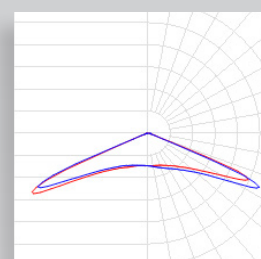
LENS LE: 61°



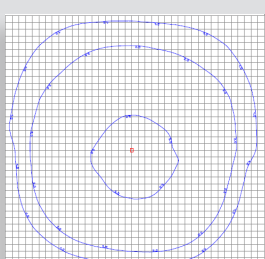
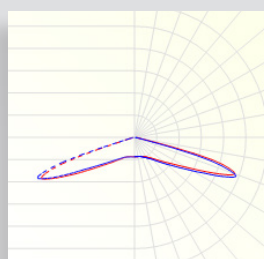
LENS K81: 102°



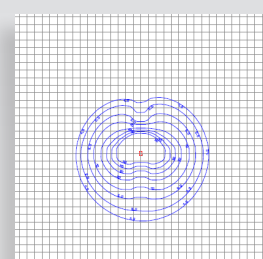
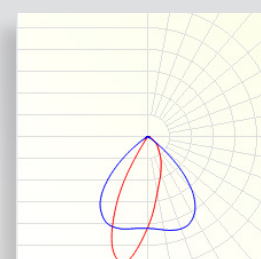
LENS K14: 132°



LENS K18: 146°

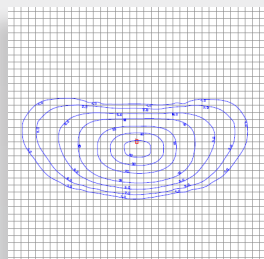
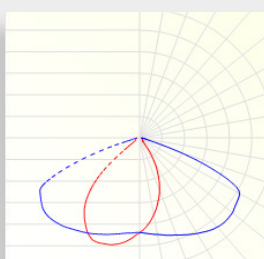


LENS K64: 92° - 28°

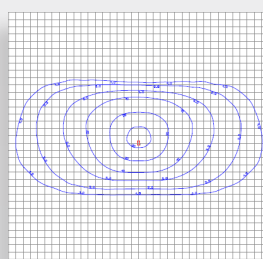
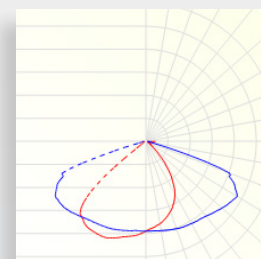


TUNNEL LIGHTING

LENS K13: 135° - 60°



LENS TM: 144° - 79°

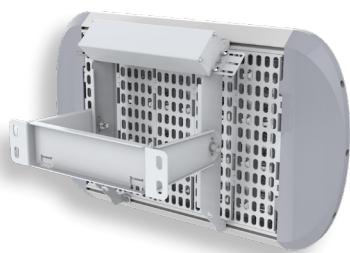


Andromeda™ C Mounting Options

CERAMIC LUMINAIRES

Standard (Wall Mount)

Standard adjustable wall/ceiling mount bracket on Flood. Bracket material options - ST12, 304SS, 316SS.



FLOOD

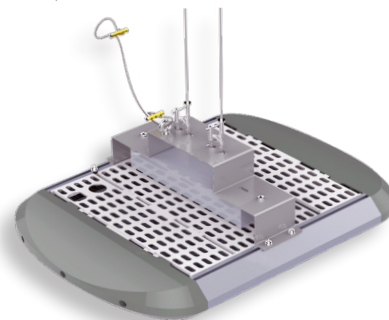
Canopy (Surface Mount)

Flat surface bracket for mounting directly to ceiling, stud or wall. Bracket material options - ST12, 304SS, 316SS.



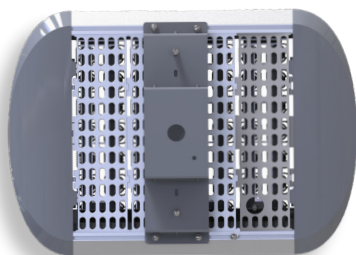
Suspension (Hooks)

Dual ST12 hooks attached to the surface bracket for suspension mounting. Bracket material options - ST12, 304SS, 316SS.



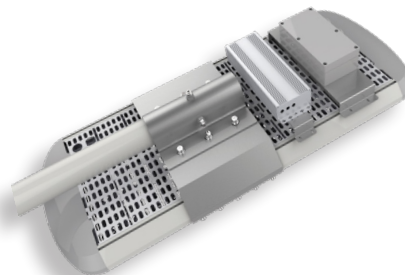
Rod Mount

Mounting bracket suitable for rod mounting with a threaded 3/4 inch pipe. Bracket material options - ST12, 304SS, 316SS.



Slip Fit

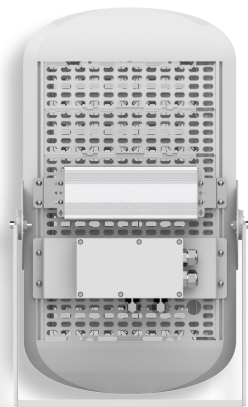
Pole fitted sleeve for Andromeda Flood units. Non adjustable. 60mmOD Pole/Arm Spigot not included. Bracket material options - ST12, 304SS, 316SS.



HIGH MAST

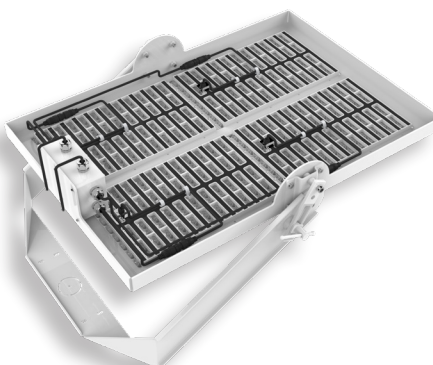
Trunnion

Heavy duty adjustable trunnion mount for High Mast luminaire. Suitable for cross beams and wall mounting. Bracket material options - ST12, 304SS & 316SS.



Forward Bracket

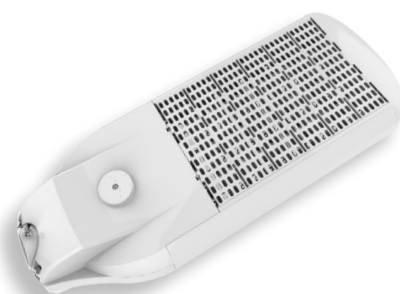
Bracket for 1000W High Mast luminaire suitable for forward throw mounting on cross beams. Bracket material options - ST12, 304SS & 316SS.



POLE MOUNT

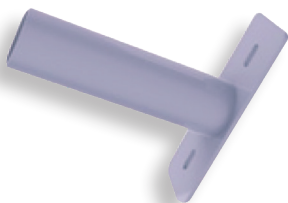
Standard (Pole Mount)

Standard adjustable pole mount to pole diameter 60mm. Adapters available for other diameters.



SHIELD OR BLIND OPTIONS ARE AVAILABLE FOR ALL LUMINAIRES WITH ANY MOUNTING BRACKET. CONTACT EMPYREAN LIGHTING TO DISCUSS REQUIREMENTS

POLE MOUNT WALL THIN

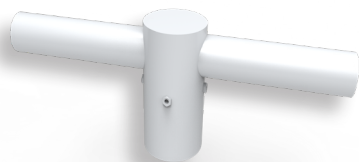


POLE MOUNT SLEEVE

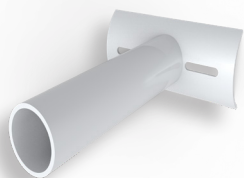
Pole top range 33.7mm/ 48mm



POLE MOUNT DUAL



POLE CURVE EXTENDED



POLE MOUNT WALL THICK

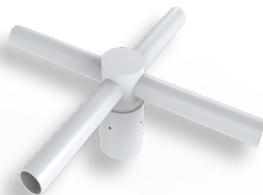


POLE MOUNT SLEEVE

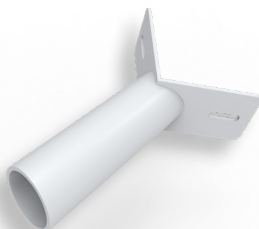
Pole top range 48mm-100mm



POLE MOUNT QUAD



POLE MOUNT CORNER

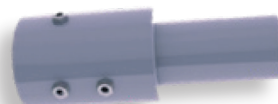


POLE MOUNT TOP



POLE MOUNT SLEEVE

Pole top range 100mm-150mm



POLE MOUNT CURVE



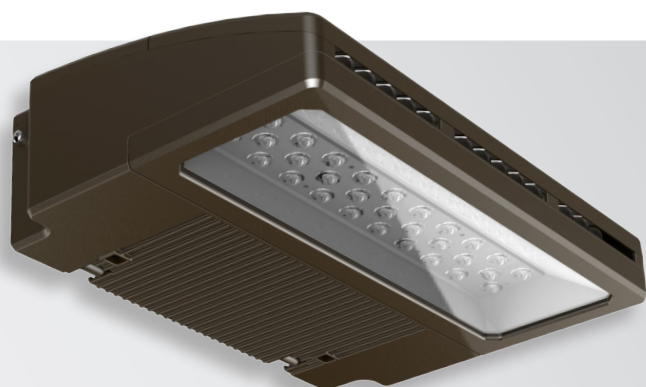
AndromedaTM

STANDARD LED SERIES



Andromeda™ Wall Pack

HIGH INTENSITY WALL MOUNT LUMINAIRE



PRODUCT INFORMATION

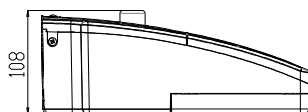
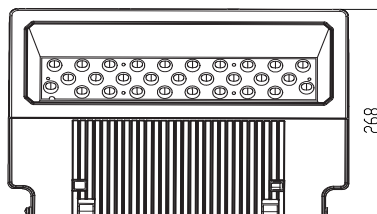
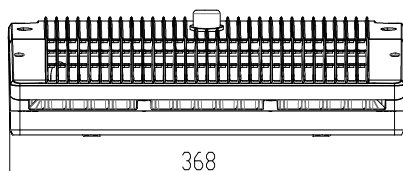
WEIGHT	5.9kg-6.3kg
PRODUCT CODE	AndromedaXPS-WallIP
DIMENSIONS	370mmL x 268mmW x 112mmD
INGRESS PROTECTION	IP66
WEIGHT	5.9kg
LIGHT SOURCE	Nichia High Power LED
HOUSING	6063 Aluminium (Marine Grade)
HOUSING COLOUR	White, Silver, Bronze (as seen in image on left)
OPERATING TEMPERATURE	-50°C to +55°C

TECHNICAL SPECIFICATIONS

INPUT VOLTAGE	90-305VAC, 50/60Hz (Standard) Options - 24VDC, 127-370VDC or 313-381VAC
LIFESPAN	60,000 hours L70 B10
POWER	20W, 30W, 40W, 50W, 60W
BEAM ANGLE	WB
LUMINOUS EFFICACY	XPS - 100 lm/W
POWER FACTOR	0.97
CCT	5,000-5,500K Cool White* >65 (CRI) Standard 4,000-4,500K Natural White >75 (CRI) 2,700-3,000K Warm White >85 (CRI)

* FIGURES REPRESENTED IN LUMEN OUTPUT TABLE BELOW AT 5,000K

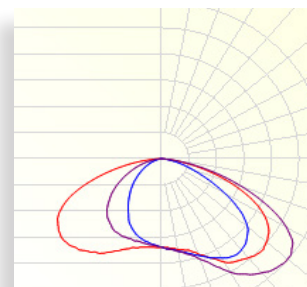
SCHEMATIC OF WALL PACK



TYPICAL APPLICATIONS



BEAM ANGLE WB



PRODUCT CODE	POWER	OUTPUT* (LUMENS)	INPUT CURRENT (mA)	LENGTH (MM)	WIDTH (MM)	DEPTH (MM)	WEIGHT (KG)
AndromedaXPS-WallIP-20	20W	2,000	600mA	368	268	108	5.9kg
AndromedaXPS-WallIP-30	30W	3,000	600mA	368	268	108	6kg
AndromedaXPS-WallIP-40	40W	4,000	600mA	368	268	108	6.1kg
AndromedaXPS-WallIP-50	50W	5,000	600mA	368	268	108	6.2kg
AndromedaXPS-WallIP-60	60W	6,000	600mA	368	268	108	6.3kg

AndromedaTM

CUSTOM APPLICATION LED DESIGN





ANDROMEDA CUSTOM RANGE

WITH ALL THE BENEFITS of our standard Andromeda™ Series, our custom range includes luminaires specifically designed and modified for use in unusual or challenging environments.

WORKING CLOSELY with experts in these fields our aim is to surpass the performance of traditional technology, while providing a more efficient, green and safe luminaire.

THE DEVELOPMENT of additional custom Andromeda™ luminaires is the cornerstone of our research and development program, and we welcome ideas and collaborations for your next project.

OUR RANGE INCLUDES

AQUARIUM
GROW LIGHTS
TURTLE SAFE LUMINAIRES



Andromeda™ C Aqua

HIGH POWER 10,000K CCT LED



PRODUCT INFORMATION

PRODUCT CODE DIMENSIONS

	Andromeda-C-Aqua	Length	Width	Depth	Weight
160W		417mm	360mm	130mm	9 kg
320W		787mm	360mm	129.5mm	13.5 kg

INGRESS PROTECTION LIGHT SOURCE HOUSING

IP66
Nichia High Power LED
6063 Aluminium (Marine Grade)
Ceramic Diode Seat with Polycarbonate Rails
ST12

BRACKET MATERIAL BRACKET TYPE

Wall Mount, Surface Mount, Suspended with Rods

FRAME COLOUR

Silver

MECHANICAL IMPACT RESISTANCE

IK08 (Bracket & Frame Only)

IP RATING

IP66

OPERATING TEMPERATURE

-40°C to +55°C

TECHNICAL SPECIFICATIONS

INPUT VOLTAGE

90-305VAC, 50/60Hz

LIFESPAN

50,000 hours to L70

POWER

160W & 320W

DIMMABLE

5-100% - 0-10V, DALI

BEAM ANGLE

* Variable based on Lens

LUMINOUS EFFICACY

110lm/W

POWER FACTOR

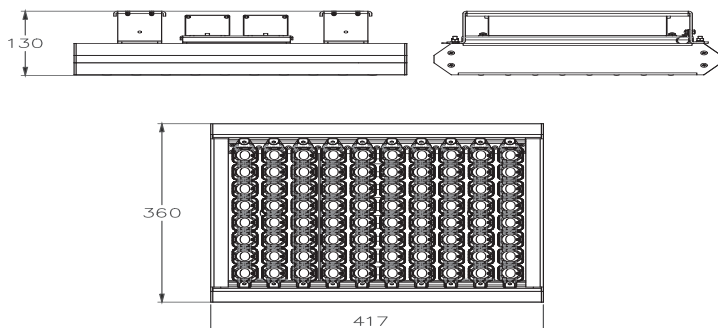
>0.97

CCT

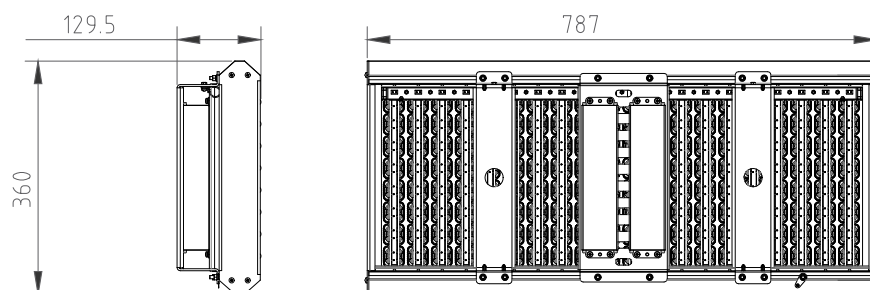
10,000K

* FOR LENS OPTIONS SEE LENS PAGE IN ANDROMEDA™ CERAMIC SECTION

SCHEMATIC OF ANDROMEDA-C-AQUA 160W



SCHEMATIC OF ANDROMEDA-C-AQUA 320W



OUTPUT

WATTS	LUMENS
160W	17,600 lm
320W	35,200 lm

APPLICATIONS



NebulaTM Multi & Linear

FIXED CCT VARIABLE CONTROL LED



PRODUCT INFORMATION

DIMENSIONS

		Length	Width	Depth	Weight
Multi	20W	120mm	107mm	180mm	2.5kg
	40W	268mm	203mm	161mm	3.8kg
	60W	293mm	203mm	161mm	5.0kg
	80W	418mm	203mm	161mm	10.2kg
	100W	518mm	203mm	161mm	12.0kg
Linear	18W	600mm	70mm	121mm	3.2kg
	24W	1000mm	70mm	121mm	4.5kg
	36W	1200mm	70mm	121mm	5.9kg

INGRESS PROTECTION

IP66

LIGHT SOURCE

Nichia High Power LED

HOUSING

Aluminium alloy and adjustable mounting brackets

BRACKET MATERIAL

ST12

BRACKET TYPE

Wall Mount, Surface Mount

FRAME COLOUR

Silver, Black

MECHANICAL IMPACT RESISTANCE

IK08 (Bracket & Frame Only)

IP RATING

IP66

OPERATING TEMPERATURE

-40°C to +55°C

TECHNICAL SPECIFICATIONS

INPUT VOLTAGE

90-305VAC, 50/60Hz

LIFESPAN

50,000 hours to L70

POWER

Multi - 20W, 40W, 60W, 80W, 100W
Linear - 18W, 24W, 36W

POWER FACTOR

>0.97

DIMMABLE

5-100% - DALI & DMX 512 for RGB

BEAM ANGLE

Multi - 10°, 40° (20W only), 40° Elongated
Linear - 10°, 15°, 25°, 30°, 50°

CCT

Multi

5,000-5,500K Cool White*
4,000-4,500K Natural White
2,700-3,000K Warm White
RGB or Blue

Linear

5,000-5,500K Cool White
4,000-4,500K Natural White
RGB or Blue



Nebula Multi 40W

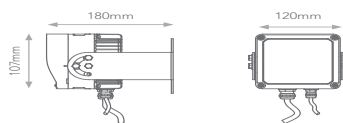


Nebula Multi 20W

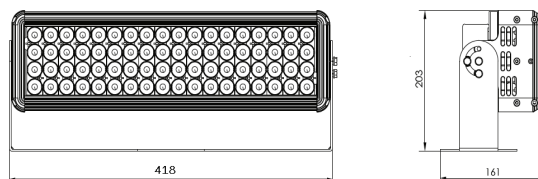


Nebula Linear 18W

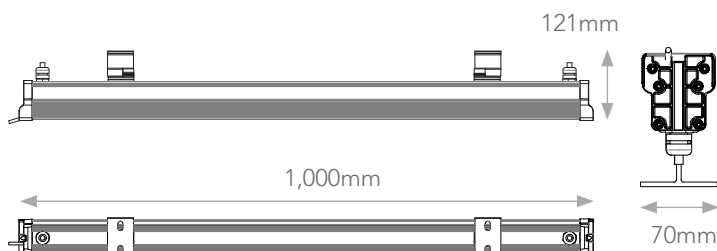
SCHEMATIC OF NEBULA MULTI 20W



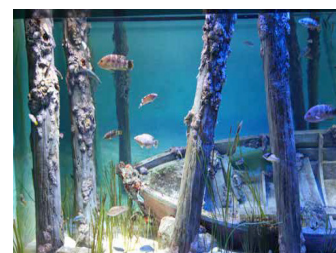
SCHEMATIC OF NEBULA MULTI 80W



SCHEMATIC OF NEBULA LINEAR 24W



APPLICATIONS





PRODUCT INFORMATION

PRODUCT CODE

Andromeda-C-Grow-FW-400W
(Full Spectrum)

Andromeda-C-Grow-RB-400W
(Red/Blue)

DIMENSIONS

704mmL x 290mmW x 173mmD

INGRESS PROTECTION

IP66

WEIGHT

10.4kg (22.9lbs)

LIGHT SOURCE

Osram LED Diodes / High Output Red & Blue Diodes

BEAM ANGLE

60°

BRACKET MATERIAL

AL 6063 (Aluminium Marine Grade)

TECHNICAL SPECIFICATIONS

INPUT VOLTAGE

100-277VAC, 50/60Hz

DIMMABLE

Yes - 0-10V (D) or WIFI (W)

CONTROL

Wireless Application

LIFESPAN

50,000 hours (to L70/B10)

POWER

400W

OUTPUT

Full Spectrum - 24,000lm

POWER FACTOR

>0.95

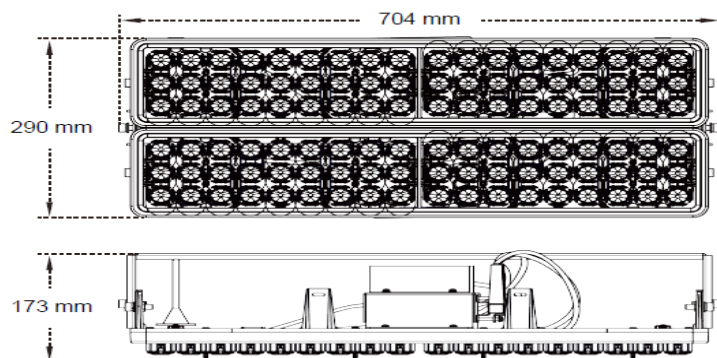
PHOTON FLUX

Refer to below table

OPERATING TEMPERATURE

-40°C to +55°C

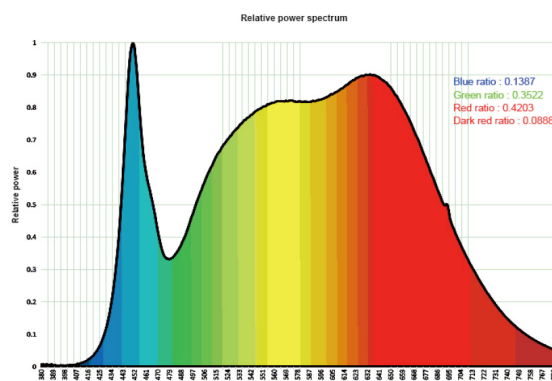
SCHEMATIC OF ANDROMEDA-C-GROW 400W



PHOTON FLUX AT MOUNTING HEIGHT

Model / type	Mounting height (m)	Radius (m)	PPFD ($\mu\text{mol/s/m}^2$)
400 W (red - blue)	1.5	0.9	132
	2	1.2	75
	2.5	1.5	37
400 W (white)	1.5	0.9	120
	2	1.2	68
	2.5	1.5	43

FULL SPECTRUM WHITE





PRODUCT INFORMATION

PRODUCT CODE

Andromeda-C-Grow-FW-200W
(Full Spectrum)

Andromeda-C-Grow-RB-200W
(Red/Blue)

DIMENSIONS

INGRESS PROTECTION

WEIGHT

LIGHT SOURCE

BEAM ANGLE

BRACKET MATERIAL

662mmL x 145mmW x 161mmD

IP66

5kg (11lbs)

Osram LED Diodes / High Output Red & Blue Diodes

60°

AL 6063 (Aluminium Marine Grade)

TECHNICAL SPECIFICATIONS

INPUT VOLTAGE

DIMMABLE

CONTROL

LIFESPAN

POWER

OUTPUT

POWER FACTOR

PHOTON FLUX

OPERATING TEMPERATURE

100-277VAC, 50/60Hz

Yes - 0-10V (D) or WIFI (W)

Wireless Application

50,000 hours (to L70/B10)

200W

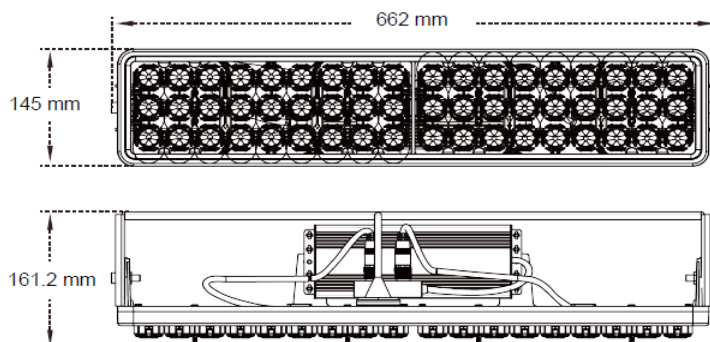
Full Spectrum - 12,000lm

>0.95

Refer to below table

-40°C to +55°C

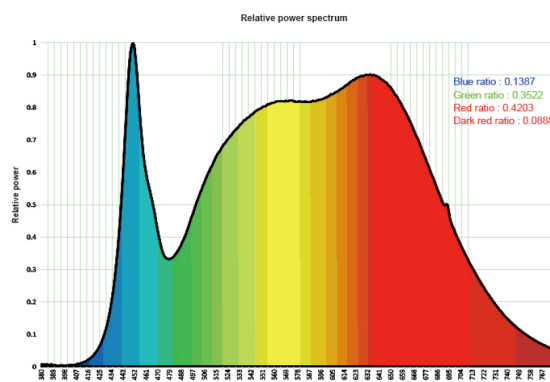
SCHEMATIC OF ANDROMEDA-C-GROW 200W



PHOTON FLUX AT MOUNTING HEIGHT

Model / type	Mounting height (m)	Radius (m)	PPFD ($\mu\text{mol/s/m}^2$)
200 W (red - blue)	1	0.6	145
	1.5	0.9	66
	2	1.2	38
200 W (white)	1	0.6	132
	1.5	0.9	60
	2	1.2	34

FULL SPECTRUM WHITE



PolarisTM

COST EFFECTIVE LED SERIES



POLARIS LED RANGE

IN RESPONSE TO the recent trend toward D&C projects, and the need for more cost-effective LED solutions, we've released our Polaris™ range of luminaires. The Polaris™ is a high quality, compliant, product series backed by our exemplary customer service and comprehensive 5 year warranty. Further they are fully compliant to all relevant Australian standards and their performance is backed by NATA certified testing done here in Australia.

If you're looking for a high quality, comprehensively compliant and supported product series for your next project, don't look any further than our Polaris™ series of luminaires, which includes **high bays, pole top, floodlights, and security lights.**



N5433



N26539



RoHS

Polaris™ High Bay

HIGH INTENSITY LED LIGHTS



PRODUCT INFORMATION



WEIGHT RANGE	6.1kg to 7.35kg
LIGHT SOURCE	Philips High Power LED
LENS	Transparent Tempered Glass
HOUSING	Diecast Aluminium
BRACKET MATERIAL	Carbon Steel
MOUNTING OPTIONS	Suspended (Standard 1 Hook) or Wall Mount
FRAME COLOUR	Black, White, Silver
CONTROL	0-10V, DALI (100W & 160W), Motion Sensor
MECHANICAL IMPACT RESISTANCE	IK10
IP RATING	IP65
OPERATING TEMP	-25°C to 55°C

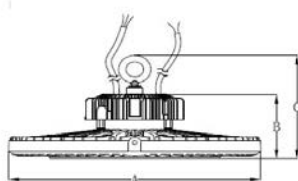
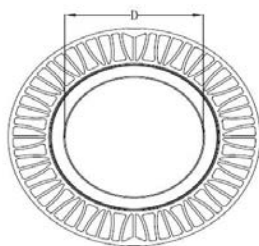
TECHNICAL SPECIFICATIONS

INPUT VOLTAGE	90-305VAC, 50/60Hz
DIMMABLE OPTIONAL	Yes 0-10V, Motion Sensor Option
LIFESPAN	60,000 hours to L70
POWER	80W, 100W, 160W
BEAM ANGLE	120°
LUMINOUS EFFICACY	115 lm/W post optics
CCT	5,000K Cool White* 4,000K Natural White 3,000K Warm White

* FIGURES REPRESENTED IN LUMEN OUTPUT TABLE BELOW AT 5,000K



SCHEMATIC OF HIGH BAY



MOUNTING OPTIONS

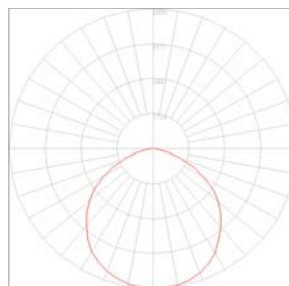


SUSPENDED (1 Hook Provided)



WALL MOUNTED (Bracket)

BEAM ANGLE 120°



TYPICAL APPLICATIONS



PRODUCT CODE	POWER	OUTPUT* (LUMENS)	DIAMETER (MM)	INNER DIAMETER	DEPTH (MM)
PolarisHB-80W-120	80W	9,200	248	-	150
PolarisHB-100W-120	100W	11,500	388	194	172
PolarisHB-160W-120	160W	18,400	388	194	172

Polaris™ Pole Mount

LIGHT WEIGHT POLE MOUNT LED



PRODUCT INFORMATION

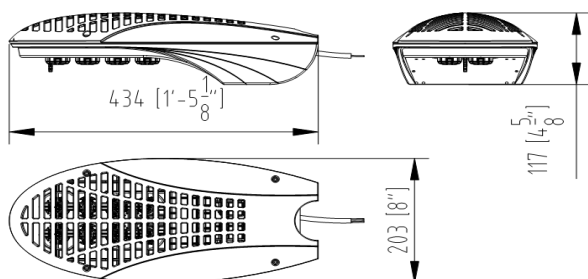
WEIGHT RANGE	1.2kg
LIGHT SOURCE	Nichia High Power LED
LENS	Ceramic Pixel
HOUSING	UV Stabilised Plastic
FRAME COLOUR	Silver, White, Bronze
MECHANICAL IMPACT RESISTANCE	IK08
IP RATING	IP66
OPERATING TEMP	-40°C to 55°C

TECHNICAL SPECIFICATIONS

INPUT VOLTAGE	100-240VAC, 50/60Hz or 24VDC
DIMMABLE	Non Dimmable
LIFESPAN	50,000 hours to L70
POWER	20W, 30W, 35W, 40W
BEAM ANGLES	LJ25 - 130°-85° LJ31 - 144°-72° LJ32 - 152°-82° LJ33 - 140°-106°
LUMINOUS EFFICACY	130lm/W post optics
CCT	5,000K Cool White* 4,000K Natural White 3,000K Warm White

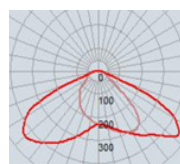
* FIGURES REPRESENTED IN LUMEN OUTPUT TABLE BELOW AT 5,000K

SCHEMATIC OF POLE MOUNT

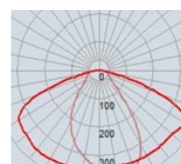


BEAM ANGLES

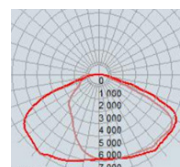
LJ25



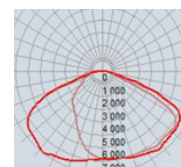
LJ31



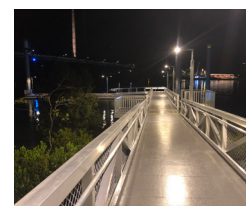
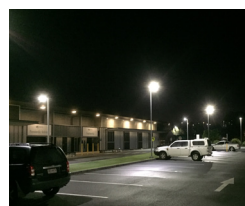
LJ32



LJ33



TYPICAL APPLICATIONS



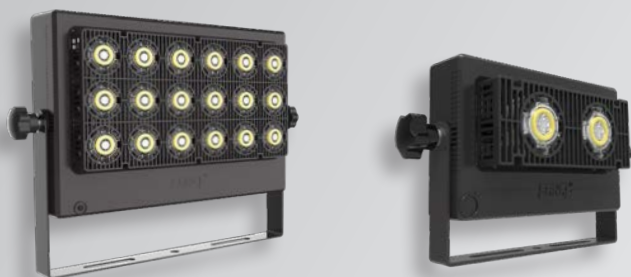
Polaris™ Flood

HIGH INTENSITY LED LIGHTS



PRODUCT INFORMATION

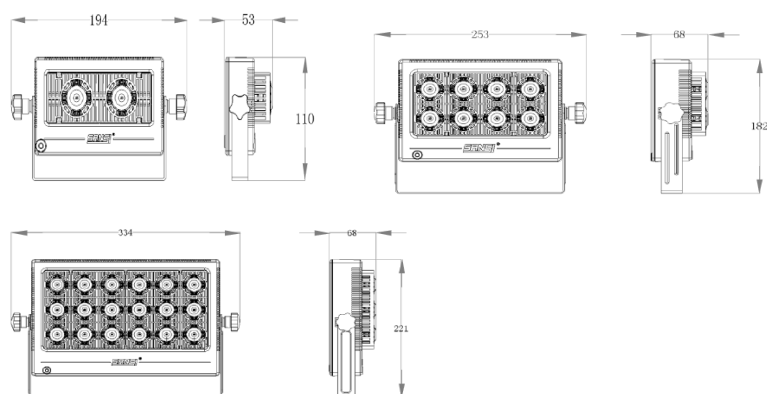
WEIGHT RANGE	0.74kg to 3.78kg
LIGHT SOURCE	Nichia High Power LED
LENS	Ceramic
HOUSING	UV Stabilised Plastic
BRACKET MATERIAL	Metal Plate
MOUNTING OPTIONS	Trunnion Bracket
FRAME COLOUR	Black
CONTROL	Remote Control (RGB Option Only)
IP RATING	IP66
OPERATING TEMP	-30°C to 55°C



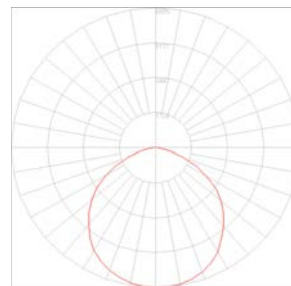
TECHNICAL SPECIFICATIONS

INPUT VOLTAGE	100-240VAC, 50/60Hz
DIMMABLE OPTIONAL	Non Dimmable
LIFESPAN	30,000 hours to L70
POWER	10W, 30W, 50W, 70W, 100W
BEAM ANGLE	120°
LUMINOUS EFFICACY	100 lm/W post optics
CCT	~5,500K Cool White RGB (16 Colour Options)

SCHEMATICS OF FLOOD 10W, 50W & 100W



BEAM ANGLE 120°



TYPICAL APPLICATIONS



PRODUCT CODE	POWER	OUTPUT (LUMENS)	LENGTH (MM)	WIDTH (MM)	DEPTH (MM)
PolarisFL-10W	10W	1,100	194	110	53
PolarisFL-30W	30W	3,000	176	120	38
PolarisFL-50W	50W	5,000	253	182	68
PolarisFL-70W	70W	7,000	200	193	38
PolarisFL-100W	100W	10,000	334	221	68



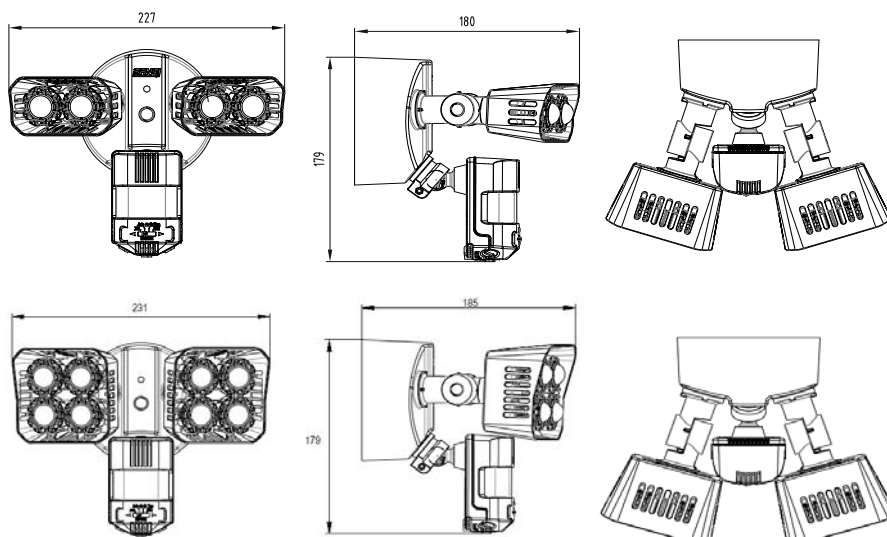
PRODUCT INFORMATION

WEIGHT RANGE	0.87kg - 1.1kg
LIGHT SOURCE	Nichia High Power LED
LENS	Ceramic Pixel
HOUSING	UV Stabilised Plastic with Metal Plate Bracket
FRAME COLOUR	Black, White
IP RATING	IP66
OPERATING TEMP	-40°C to 55°C

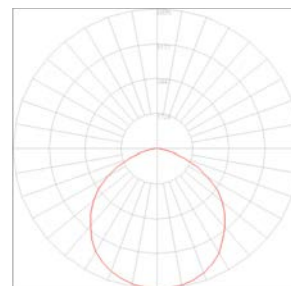
TECHNICAL SPECIFICATIONS

INPUT VOLTAGE	100-240VAC, 50/60Hz or 24VDC
DIMMABLE	Non Dimmable
LIFESPAN	50,000 hours to L70
POWER	18W & 36W
BEAM ANGLE	120° + Adjustable Arms
LUMINOUS EFFICACY	110lm/W post optics
CRI	80
CCT	5,000K Cool White
WORKING MODES	Test Mode: Proof sensor is working Auto Mode: Light turns on for 1-10min when motion sensor detects movement. On Time Mode: Light works during daytime and night time via the on/off switch D2D (Dusk to Dawn): Lights will turn on automatically at night and off at dawn

SCHEMATIC OF SECURITY LIGHTS



BEAM ANGLE 120°



TYPICAL APPLICATIONS



PRODUCT CODE	POWER	OUTPUT* (LUMENS)	LENGTH (MM)	WIDTH (MM)	DEPTH (MM)
PolarisS-18W	18W	2,600	179	227	190
PolarisS-36W	36W	3,900	232	232	188

CoronaTM
PANEL LIGHTS





CORONA™ PANEL RANGE

OUR CORONA™ LED PANEL SERIES are aesthetically beautiful, light weight, efficient and ideal for new or retrofit projects requiring a modern and versatile solution.

BENEFITS OF OUR RANGE

- USES ~50% LESS ELECTRICITY THAN FLUORESCENT TECHNOLOGY
- LASTS ON AVERAGE THREE TIMES LONGER THAN FLUORESCENT TUBES
- IS AVAILABLE IN A VARIETY OF SIZES FOR ANY ENVIRONMENT OR APPLICATION
- GENERATES VERY LITTLE HEAT WHICH REDUCES LOADS ON AIR-CONDITIONING, LESSENS FIRE RISK AND IMPROVES SAFETY
- DO NOT REQUIRE A STARTER OR BALLAST – FURTHER REDUCING ENERGY USE AND FIXTURE WEIGHT
- CONTAINS NO HARMFUL OR TOXIC SUBSTANCES AND ARE FULLY RECYCLABLE
- ELIMINATES MERCURY RECYCLING COSTS
- DOES NOT EMIT UV RADIATION
- CYANOSIS OBSERVATION INDEX (COI) COMPLIANT UNITS AVAILABLE
- MOST PRODUCTS HAVE VEET AND IPART APPROVALS





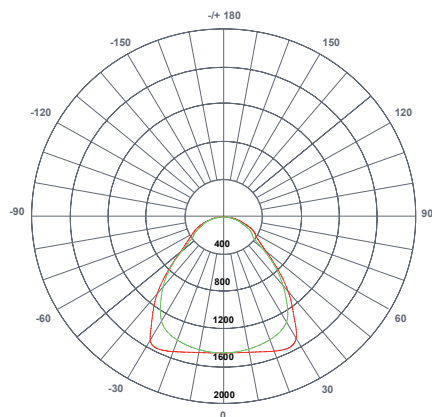
PRODUCT INFORMATION

MEASUREMENTS	LENGTH	WIDTH	DEPTH
	595mm	595mm	8mm
LIGHT SOURCE	LumenMax/Epistar		
LENS	Frosted PC or Prismatic		
HOUSING	Aluminium alloy		
MOUNTING	Default - mount in T-Bar ceiling grid Recessed with Plaster Frame Kit, Suspended, Hard Surface, Box Frame.		
TRIM	White		
OPERATING TEMPERATURE	-20°C to +45°C		

TECHNICAL SPECIFICATIONS

INPUT VOLTAGE	110VAC 60Hz, 230VAV 50Hz
DIMMABLE	0-10V/PWM, DALI or Tridonic
LIFESPAN	50,000 hours (to L70 B10)
POWER	30W, 40W, 50W
UGR	19
BEAM ANGLE	120°
CRI	>80
CCT	5,700K Cool White 4,000K Natural White 3,000K Warm White

BEAM ANGLE = 120°

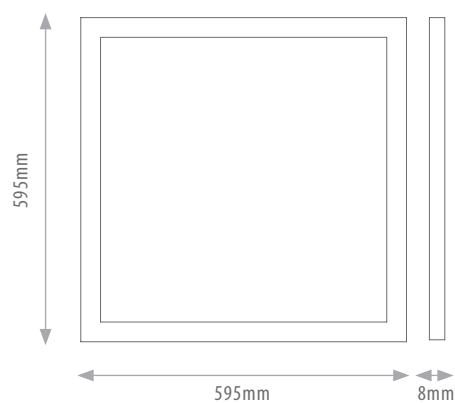


Unit: cd
c0/180 : PRISMATIC
c90/270 : STANDARD

OUTPUT

	Cool White	Natural White	Warm White
30W	3,700 lm	3,500 lm	3,200 lm
40W	4,000 lm	3,800 lm	3,600 lm
50W	4,900 lm	4,700 lm	4,500 lm

SCHEMATIC OF CORONA-600SS



PRODUCT CODE BUILDER

E.G. Corona-600SS-W-NW plus Corona-DriverFF-40W-ND

PRODUCT	LENGTH	LENS	TRIM	POWER	CCT
Corona	- 600SS	"Blank" (Frosted) P (Prismatic)	- W (White)	30W 40W 50W	CW (Cool White) NW (Natural White) WW (Warm White)

DRIVER & POWER OPTIONS

DriverFF (NonDim) 30W, 40W, 50W
 Driver-Dim (0-10V) 30W, 40W, 50W
 Driver-DALI 25W, 40W, 60W

CoronaTM Rectangular

ULTRA SLIM PANEL LIGHTS



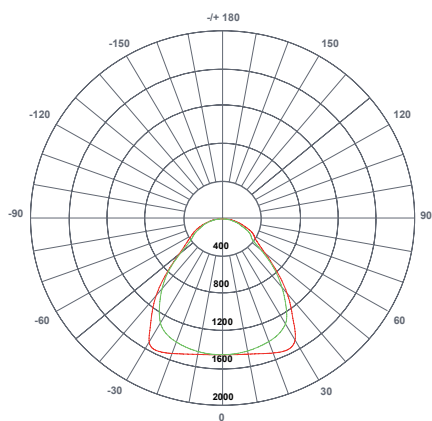
PRODUCT INFORMATION

MEASUREMENTS	LENGTH	WIDTH	DEPTH
	595/ 1,195mm	295/ 595mm	8mm
LIGHT SOURCE	LumenMax/Epistar LED		
LENS	Frosted PC or Prismatic		
HOUSING	Aluminium alloy		
MOUNTING	Default - mount in T-Bar ceiling grid Recessed with Plaster Frame Kit, Suspended, Hard Surface, Box Frame.		
TRIM	White		
OPERATING TEMPERATURE	-20°C to +45°C		

TECHNICAL SPECIFICATIONS

INPUT VOLTAGE	110VAC 60Hz, 230VAC 50Hz
DIMMABLE	0-10V/PWM, DALI or Tridonic
LIFESPAN	50,000 hours (to L70 B10)
POWER	26W, 40W, 70W
UGR	19
BEAM ANGLE	120°
CRI	>80
CCT	5,700K Cool White 4,000K Natural White 3,000K Warm White

BEAM ANGLE = 120°



Unit: cd
 c0/180 : PRISMATIC
 c90/270 : STANDARD

OUTPUT

	Cool White	Natural White	Warm White
26W	2,500 lm	2,300 lm	2,100 lm
40W	4,200 lm	4,000 lm	3,800 lm
70W	5,900 lm	5,700 lm	5,500 lm

SCHEMATIC OF CORONA-1200RS



PRODUCT CODE BUILDER

E.G. Corona-1200RS-W-NW plus Corona-DriverFF-26W-ND

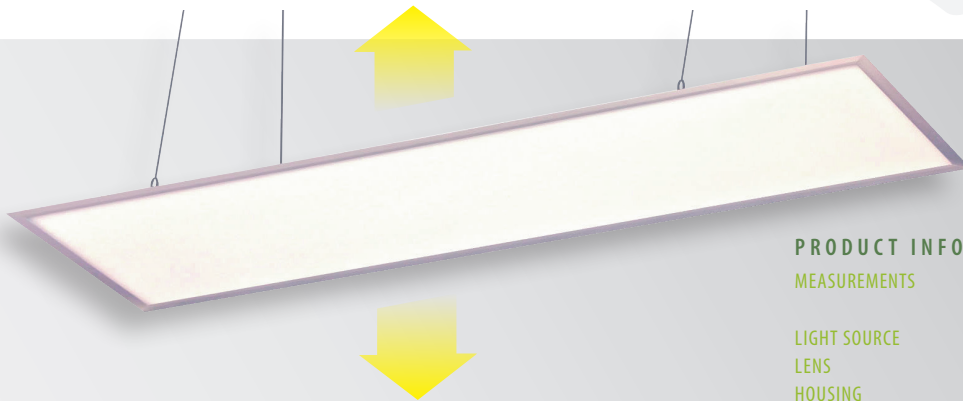
PRODUCT	LENGTH	WIDTH	LENS	TRIM	POWER	CCT
Corona	- 600	RS(300)	"Blank" (Frosted) - W (White)		26W	CW (Cool White)
	- 1200	RS(300)	P (Prismatic)		26W	NW (Natural White)
					40W	WW (Warm White)
					70W	
					40W	
					70W	
		----- R6S(600)				

DRIVER & POWER OPTIONS

DriverFF (NonDim) 26W, 40W, 70W
 Driver-Dim (0-10V) 26W, 40W, 70W
 Driver-DALI 25W, 40W, 60W

Corona™ Up / Down

RECTANGULAR PANEL LIGHTS



UP/DOWN PANEL

26W or 40W panel with frosted backing which emits ~30% of total lumens upwards.

PRODUCT INFORMATION

MEASUREMENTS

LENGTH	WIDTH	DEPTH
1,195mm	295mm	12mm

LIGHT SOURCE

Epistar

LENS

Frosted PC or Prismatic (Down Only)

HOUSING

Aluminium alloy

MOUNTING

Suspended

TRIM

White

OPERATING TEMPERATURE

-20°C to +45°C

TECHNICAL SPECIFICATIONS

INPUT VOLTAGE

110VAC 60Hz, 230VAC 50Hz

DIMMABLE

0-10V/PWM, DALI or Tridonic

LIFESPAN

50,000 hours (to L70 B10)

POWER

26W, 40W

UGR

19

BEAM ANGLE

120°

CRI

>80

CCT

5,700K Cool White
4,000K Natural White
3,000K Warm White

SCHEMATIC OF CORONA-U1200R



OUTPUT

	Cool White	Natural White	Warm White
26W	U: 715 lm D: 1,620 lm	U: 650 lm D: 1,560 lm	U: 620 lm D: 1,430 lm
40W	U: 1,100 lm D: 2,500 lm	U: 1,000 lm D: 2,400 lm	U: 950 lm D: 2,250 lm

PRODUCT CODE BUILDER

E.G. Corona-U1200RS-W-NW plus Corona-Driver-DALI-40W

PRODUCT RANGE	TYPE	LENGTH (MM)	LENS	TRIM	POWER	CCT	MOUNTING
Corona	- U (Up/Down)	1200R (1200)	P (Prismatic)	- W (White)	26W 40W	CW (Cool White) NW (Natural White) WW (Warm White)	- S (Suspended)

DRIVER & POWER OPTIONS

DriverFF (NonDim) 26W, 40W
Driver-Dim (0-10V) 26W, 40W
Driver-DALI 25W, 40W



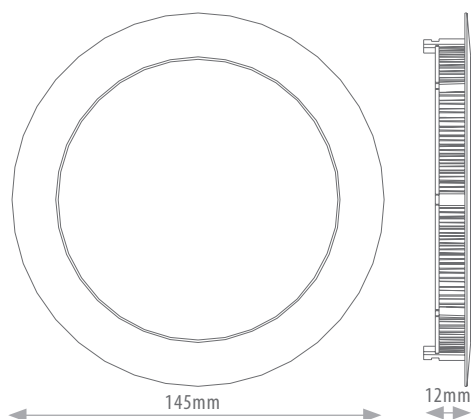
PRODUCT INFORMATION

MEASUREMENTS	LENGTH	DEPTH
	145 / 180 / 240mm	12mm
CUTOUT	125 / 160 / 220mm	
LIGHT SOURCE	Epistar LED	
LENS	Frosted PC or Prismatic	
HOUSING	Aluminium alloy	
MOUNTING	Recessed (with 2 x spring clips)	
TRIM	White	
OPERATING TEMPERATURE	-20°C to +45°C	

TECHNICAL SPECIFICATIONS

INPUT VOLTAGE	110VAC 60Hz, 230VAC 50Hz
DIMMABLE	0-10V/PWM, DALI or Tridonic
LIFESPAN	50,000 hours (to L70 B10)
POWER	8W, 15W, 24W
BEAM ANGLE	120°
CRI	>75
CCT	5,700K Cool White 4,000K Natural White 3,000K Warm White

SCHEMATIC OF CORONA-145C



OUTPUT

	Cool White	Natural White	Warm White
8W	650 lm	600 lm	450 lm
15W	1,300 lm	1,200 lm	1,000 lm
24W	2,200 lm	2,000 lm	1,800 lm

PRODUCT CODE BUILDER

E.G. Corona-240C-W-NW plus Corona-DriverFF-24W-ND

PRODUCT RANGE	DIAMETER (MM)	LENS	POWER	CCT
Corona	- 145C (145)	"Blank" (Frosted)	- 8W	CW (Cool White)
	- 180C (180)	P (Prismatic)	- 15W	NW (Natural White)
	- 240C (240)		- 24W	WW (Warm White)

DRIVER & POWER OPTIONS

DriverFF (NonDim) 8W, 15W, 24W
Driver-Dim (0-10V) 8W, 15W, 24W
Driver-DALI 12W, 25W



PRODUCT INFORMATION



MEASUREMENTS

DIAMETER 380 / 580 / 980mm DEPTH 13.5 / 15mm

LIGHT SOURCE

Epistar LED

LENS

Frosted PC

HOUSING

Aluminium alloy

MOUNTING

Wall/Ceiling Mount or Suspension

TRIM

White

OPERATING TEMPERATURE

-20°C to +45°C

TECHNICAL SPECIFICATIONS

INPUT VOLTAGE

110VAC 60Hz, 277VAC 50Hz

DIMMABLE

Optional

LIFESPAN

50,000 hours (to L70 B10)

POWER

25W, 40W, 60W, 65W

BEAM ANGLE

120°

CRI

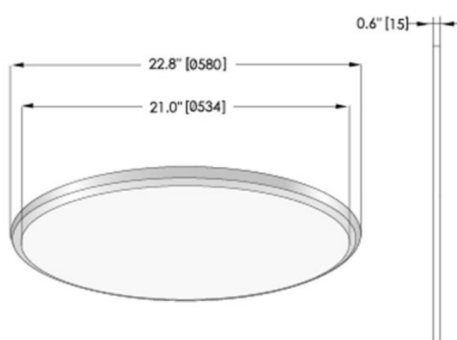
>80

CCT

5,000-6,000K Cool White
3,800-4,500K Natural White
2,800-3,500K Warm White

580mm Diameter option also available as Up/Down in 40W & 60W. Contact Emphyrean for more details.

SCHEMATIC OF CORONA-580C-W40W



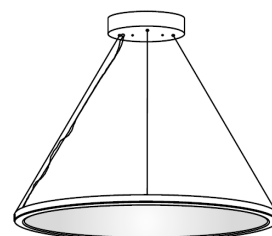
OUTPUT

	Cool White	Natural White	Warm White
25W	2,600 lm	2,500 lm	2,300 lm
40W	3,600 lm	3,400 lm	3,200 lm
60W	5,220 lm	5,000 lm	4,800 lm
65W	6,100 lm	6,000 lm	5,900 lm

WALL/CEILING MOUNT



SUSPENSION MOUNT



PRODUCT CODE BUILDER

E.G. Corona-580C-W-NW plus Corona-Driver-Dim-40W

PRODUCT	DIAMETER	TRIM	POWER	CCT
Corona	- 380C (380)	-W (White)	- 25W	CW (Cool White)
	- 580C (580)		- 40W	NW (Natural White)
			- 60W	WW (Warm White)
	- 980C (980)		- 65W	

DRIVER & POWER OPTIONS

DriverFF (NonDim) 25W, 40W, 60W, 65W
Driver-Dim (0-10V) 25W, 40W, 60W, 65W
Driver-DALI 25W, 40W, 60W



PRODUCT INFORMATION



MEASUREMENTS

LENGTH	WIDTH	DEPTH
1,195mm	295mm	8mm

LENS

Frosted PC or Prismatic

HOUSING

Aluminium alloy

MOUNTING

Default - mount in T-Bar ceiling grid
Recessed with Plaster Frame Kit,
Suspended, Hard Surface, Box Frame.
White

TRIM

TECHNICAL SPECIFICATIONS

INPUT VOLTAGE

110VAC 60Hz, 240VAC 50Hz

DIMMABLE

0-10V/PWM, DALI or Tridonic

LIFESPAN

50,000 hours (to L70 B10)

POWER

26W, 40W, 70W

BEAM ANGLE

120°

CRI

95

CCT

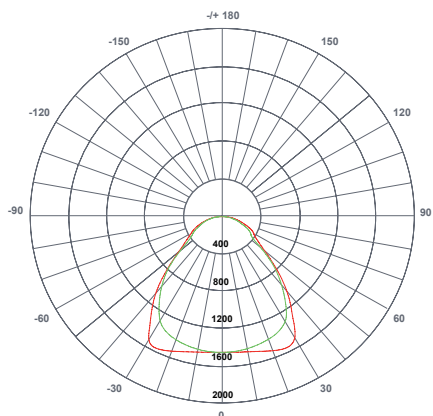
~3,970K Natural White

COI*

1.0

*CYANOSIS OBSERVATION INDEX (NATA LABORATORY CERTIFIED TO AS/NZS 1680.2.5:1997)

BEAM ANGLE = 120°



Unit: cd

c0/180 : PRISMATIC

c90/270 : STANDARD

SCHEMATIC OF CORONA-1200RS



PRODUCT CODE BUILDER

E.G. Corona-1200RSP-CYW-NW plus Corona-DriverFF-40W-ND

PRODUCT RANGE	LENGTH (MM)	WIDTH (MM)	LENS	CYANOSIS	TRIM	POWER	CCT
Corona	- 1200	RS(300)	"Blank" (Frosted) P (Prismatic)	- CY	W (White)	26W 40W	NW (Natural White)

DRIVER & POWER OPTIONS

DriverFF (NonDim) 26W, 40W

Driver-Dim (0-10V) 26W, 40W

Driver-DALI 25W, 40W



PRODUCT INFORMATION

MEASUREMENTS

LENGTH 595mm
WIDTH 595mm
DEPTH 8mm

LENS

Frosted PC or Prismatic

HOUSING

Aluminium alloy

MOUNTING

Default - mount in T-Bar ceiling grid
Recessed with Plaster Frame Kit,
Suspended, Hard Surface, Box Frame.
White

TRIM

TECHNICAL SPECIFICATIONS

INPUT VOLTAGE

110VAC 60Hz, 240VAV 50Hz

DIMMABLE

0-10V/PWM, DALI or Tridonic

LIFESPAN

50,000 hours (to L70 B10)

POWER

30W, 40W, 50W

BEAM ANGLE

120°

CRI

95

CCT

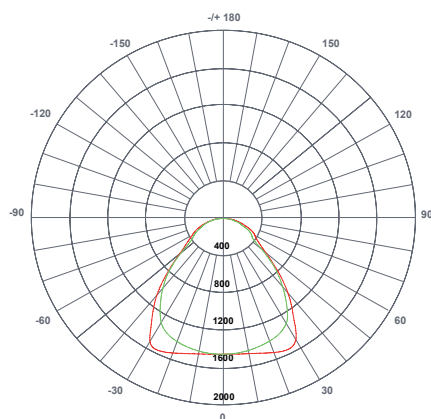
~3,970K Natural White

COI*

1.0

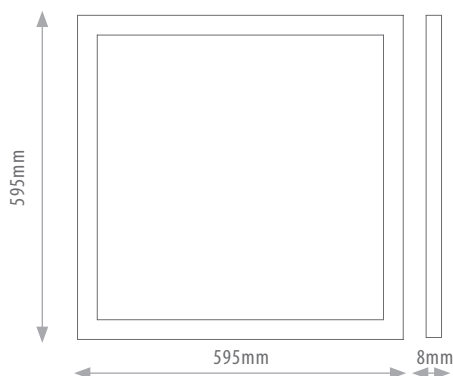
*CYANOSIS OBSERVATION INDEX (NATA LABORATORY CERTIFIED TO AS/NZS 1680.2.5:1997)

BEAM ANGLE = 120°



Unit: cd
c0/180 : PRISMATIC
c90/270 : STANDARD

SCHEMATIC OF CORONA-600SS



PRODUCT CODE BUILDER

E.G. Corona-600SS-CYW-NW plus Corona-DriverFF-50W-ND

PRODUCT RANGE	LENGTH (MM)	LENS	CYANOSIS	TRIM	POWER	CCT
Corona	- 600SS	"Blank" (Frosted) - CY P (Prismatic)		W (White)	30W 40W 50W	NW (Natural White)

DRIVER & POWER OPTIONS

DriverFF (NonDim) 30W, 40W, 50W
Driver-Dim (0-10V) 30W, 40W, 50W
Driver-DALI 25W, 40W, 60W

CoronaTM Mounting

FIXTURES



STANDARD

NO KIT REQUIRED:

Fits into T-Bar Ceiling Grid. Driver housed in ceiling.



RECESSED WITH FRAME KIT

MOUNTING CODE: Corona-RecessedKit-1200RS/600S/600R-W

Kit is recessed into plaster ceiling (cut out).

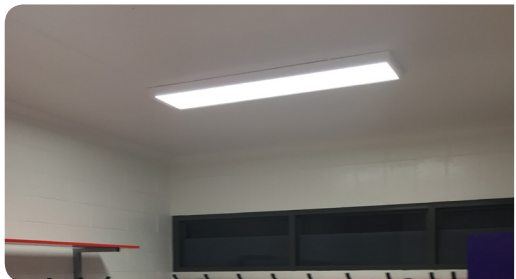
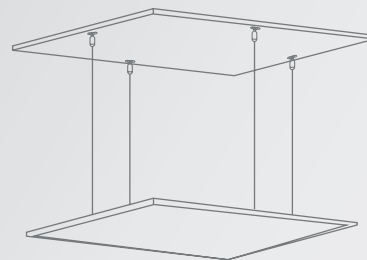
Driver is housed in ceiling or on top of panel.



SUSPENDED

MOUNTING CODE: Corona-Mount-SuspensionKit

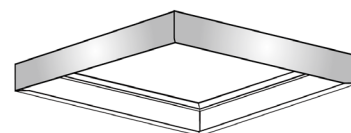
Driver is housed in ceiling or on top of panel.



BOX FRAME

SURFACE MOUNT BOX: Corona-BoxFrame-1200R/600S-W

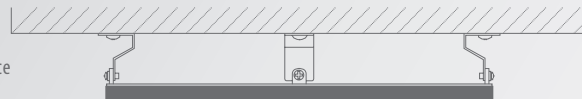
Contains panel and driver (between panel and surface).



HARD SURFACE

MOUNTING CODE: Corona-Mount-HardSurface

Driver is housed between panel and surface.





LED DOWNLIGHT RANGE





VEGA™ LED DOWNLIGHTS

OUR VEGA™ SERIES of LED downlights offers comprehensive solutions for virtually every downlight application.

New additions to this range include our thin-line Vega™ series, ideal for projects with limited clearance, and our new output and size options extend this series scope even further.

BENEFITS OF OUR RANGE

- ENERGY SAVINGS UP TO 80% COMPARED WITH TRADITIONAL DOWNLIGHT SOLUTIONS
- THE LATEST LED TECHNOLOGY FOR CONSISTENT LIGHT OUTPUT, COLOUR PERFORMANCE AND EXCELLENT COLOUR RENDERING
- DIMMABLE ON A VARIETY OF CONTROL SYSTEMS
- INTEGRATED TRANSFORMERS (STANDARD OR TRIDONIC™ OPTIONS)
- A TRUE 'FIT AND FORGET' SOLUTION, WITH EASY INSTALLATION AND A 35,000 HOUR LIFESPAN (TO L70) THAT SIGNIFICANTLY DECREASES THE NEED FOR COSTLY, TIME-CONSUMING LAMP MAINTENANCE AND REPLACEMENT
- AVAILABLE FOR VEET & IPART APPROVAL



Vega™ SA - 4" & 6"

SPOT ADJUSTABLE DOUBLE HINGED



PRODUCT INFORMATION



DIMENSIONS

	DIAMETER	DEPTH	CUT OUT RANGE
4"	160MM	71MM	148MM
6"	200MM	101MM	190MM

LIGHT SOURCE

LENS

HOUSING

TRIM

Edison LED Chip

Optical Grade Glass

Aluminium

Silver, White, Black, Optional

TECHNICAL SPECIFICATIONS

INPUT VOLTAGE

DIMMABLE OPTIONAL

LIFESPAN

POWER

BEAM ANGLE

CRI

CCT

85-265VAC, 50/60HZ

Optional (with Tridonic™ Dali Dimming)

35,000 hours

28W, 38W

24°

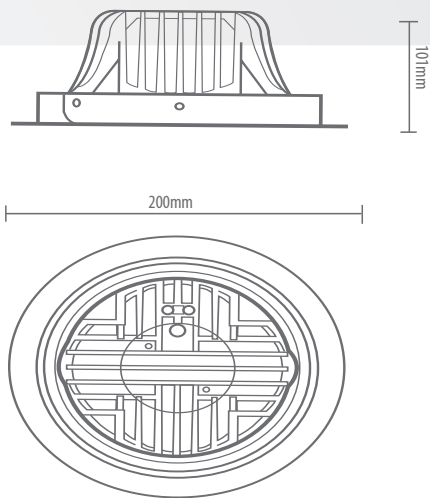
90

6,000K Cool White

4,000K Natural White

3,000K Warm White

SCHEMATIC OF VEGA ADJUSTABLE 4"

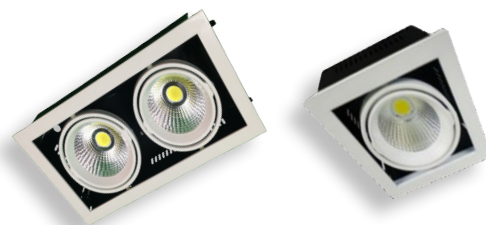


PRODUCT CODE BUILDER

E.G. VEGASA-4W228W-ND

OUTPUT

		28W	38W
COOL	Efficacy	79 lm/W	79 lm/W
WHITE	Luminous Flux	2,200 lm	3,000 lm
NATURAL	Efficacy	75 lm/W	76 lm/W
WHITE	Luminous Flux	2,100 lm	2,900 lm
WARM	Efficacy	71 lm/W	73 lm/W
WHITE	Luminous Flux	2,000 lm	2,800 lm



Also available in single (28W or twin (58W) box fitting

PRODUCT CODE	SIZE (INCH)	TRIM	BEAM ANGLE	POWER (W)	CCT	DIMMING
VEGASA	-4	S (Silver)	2 (24°)	28	C (Cool White)	-ND (Non-Dimmable)
	-6	W (White)		38	N (Natural White)	-D (Dimmable)
		B (Black)			W (Warm White)	-TD (Tridonic Dali Dimmable)
		O (Optional)				

Vega™ 3", 4" & 6"

DOWNLIGHTS



PRODUCT INFORMATION



DIMENSIONS

	DIAMETER	DEPTH	CUT OUT RANGE
3"	100MM	78MM	80MM
4"	128MM	88MM	100MM
6"	190MM	105MM	150MM

LIGHT SOURCE

Nichia High Power LED

LENS

Frosted Optical Grade PC

HOUSING

Polycarbonate Secured with 3 Spring Clips

TRIM

White

IP RATING

IP20

TECHNICAL SPECIFICATIONS

INPUT VOLTAGE

85-265VAC, 50/60HZ

DIMMABLE OPTIONAL

Optional (0/10V, DALI, Tridonic™)

LIFESPAN

120,000 hours to L70

POWER

6W, 8W, 10W, 12W, 15W

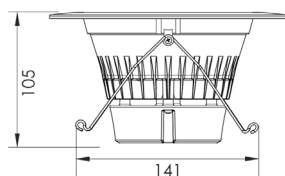
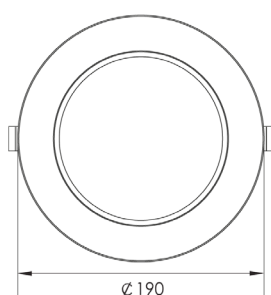
BEAM ANGLE

80°

CCT

~5,000K Cool White	>80
~4,000K Natural White	>80
~3,000K Warm White	>80

SCHEMATIC OF VEGA 6"



OUTPUT

	3"	4"	6"
6W	90 lm/W	90 lm/W	90 lm/W
8W	90 lm/W	90 lm/W	90 lm/W
10W	90 lm/W	90 lm/W	90 lm/W
12W	90 lm/W	90 lm/W	90 lm/W
15W	90 lm/W	90 lm/W	90 lm/W

COOL	Efficacy	90 lm/W	90 lm/W	90 lm/W	90 lm/W	90 lm/W
WHITE	Luminous Flux	540 lm	720 lm	900 lm	1,200 lm	1,500 lm
NATURAL	Efficacy	90 lm/W	90 lm/W	90 lm/W	90 lm/W	90 lm/W
WHITE	Luminous Flux	540 lm	720 lm	900 lm	1,200 lm	1,500 lm
WARM	Efficacy	90 lm/W	90 lm/W	90 lm/W	90 lm/W	90 lm/W
WHITE	Luminous Flux	540 lm	720 lm	900 lm	1,200 lm	1,500 lm

PRODUCT CODE BUILDER

E.G. VEGA-6W812N-ND

PRODUCT CODE	SIZE (INCH)	TRIM (MM)	BEAM ANGLE	POWER (W)	CCT	DIMMING
VEGA	-3	W (White)	8 (80°)	6	C (Cool White)	-ND (Non-Dimmable)
	-4			8	N (Natural White)	-D (Dimmable)
				10	W (Warm White)	-DD (DALI Dimmable)
	-6			12		-TD (Tridonic-DALI Dimmable)
				15		



PRODUCT INFORMATION

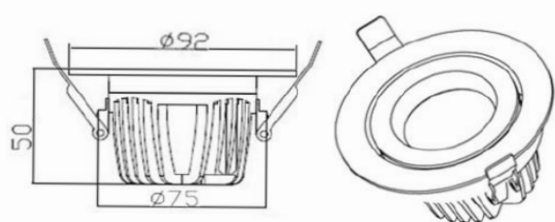


DIMENSIONS	DIAMETER	DEPTH	CUT OUT RANGE
	92MM	50MM	75MM
LIGHT SOURCE	Edison LED Chip		
LENS	Optical Grade Glass		
HOUSING	Aluminium		
TRIM	White		
INSTALLATION	Recess Clip In		
OPERATING TEMP	-20°C to 45°C		

TECHNICAL SPECIFICATIONS

INPUT VOLTAGE	200-240VAC, 50/60HZ
DIMMABLE OPTIONAL	Optional (with Tridonic™ Dali Dimming)
LIFESPAN	30,000 hours
POWER	8W / 12W
POWER FACTOR	>0.95
BEAM ANGLE	24°
CRI	>90
CCT	5,700K Cool White 4,000K Natural White 3,000K Warm White

SCHEMATIC OF VEGA ADJUSTABLE 2.5"



OUTPUT

		8W	12W
COOL	Efficacy	79 lm/W	79 lm/W
WHITE	Luminous Flux	632 lm	948 lm
NATURAL	Efficacy	75 lm/W	76 lm/W
WHITE	Luminous Flux	600 lm	900 lm
WARM	Efficacy	71 lm/W	73 lm/W
WHITE	Luminous Flux	568 lm	876 lm

PRODUCT CODE BUILDER

E.G. VEGASA-2W28W-ND

PRODUCT CODE	SIZE (INCH)	TRIM	BEAM ANGLE	POWER (W)	CCT	DIMMING
VEGASA	-2.5	W (White)	2 (24°)	8W 12W	C (Cool White) N (Natural White) W (Warm White)	-ND (Non-Dimmable) -D (Dimmable) -TD (Tridonic Dali Dimmable)

CylleneTM





CYLLENE™ LED LIGHT RANGE

OUR CYLLEE™ SERIES presents an ideal replacement for traditional interior lighting technology. Our Cyllene lighting range provides excellent light output with the inherent benefits of LED technology.

BENEFITS OF OUR RANGE

- USES ~50% LESS ELECTRICITY THAN FLUORESCENT TECHNOLOGY
- LASTS ON AVERAGE 3 TIMES AS LONG AS CIRCULAR FLUORESCENT TUBES
- IS AVAILABLE IN A VARIETY OF POWER, SIZES & DESIGNS TO SUIT ANY APPLICATION
- GENERATES VERY LITTLE HEAT WHICH REDUCES LOAD ON AIR-CONDITIONING, LESSENS FIRE RISK AND IMPROVES SAFETY.
- DOES NOT REQUIRE BALLASTS - FURTHER REDUCING ENERGY COST AND FIXTURE WEIGHT
- DOES NOT CONTAIN MERCURY (Hg)
- DOES NOT EMIT UV RADIATION





PRODUCT INFORMATION



DIMENSIONS

	Diameter (D)	Depth (H)	Inner Disc (M)
12W	280mm	42mm	163mm
18W	360mm	46mm	212mm
24W	420mm	46mm	212mm

WEIGHT

1.05 - 1.25kg

HOUSING

Aluminium with Frosted PC

INNER DISC COLOUR

Silver, White, Black, Red or Orange

IP RATING

IP44

OPERATING TEMPERATURE

-20°C to + 45°C

MOUNTING

Wall/Ceiling Mount or Suspended

TECHNICAL SPECIFICATIONS

INPUT VOLTAGE

90-264V and 50/60Hz

DIMMABLE OPTIONAL

Optional

LIFESPAN

50,000 hours

POWER

12W, 18W, 24W

BEAM ANGLE

360° Up & Down

POWER FACTOR

>0.95

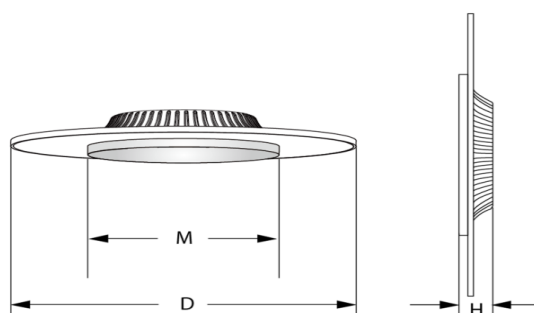
CRI

>80

CCT

~5,700K Cool White
~4,000K Natural White
~3,000K Warm White

SCHEMATIC OF CYLLENE HALO



OUTPUT

		12W	18W	24W
COOL WHITE	Efficacy	110 lm/W	110 lm/W	110 lm/W
	Luminous Flux	1,320 lm	1,980 lm	2,640 lm
NATURAL WHITE	Efficacy	100 lm/W	100 lm/W	100 lm/W
	Luminous Flux	1,200 lm	1,800 lm	2,400 lm
WARM WHITE	Efficacy	90 lm/W	90 lm/W	90 lm/W
	Luminous Flux	1,080 lm	1,620 lm	2,160 lm

PRODUCT CODE BUILDER

E.G. CYLLENE-H18WN-S-ND-W

PRODUCT CODE	POWER (W)	CCT	COVER COLOUR	DIMMING	MOUNTING
CYLLENE-H	12W	C (Cool White)	-S (Silver)	-ND (Non-Dimmable)	-W (Wall/Ceiling Mount)
	18W	N (Natural White)	-W (White)	-D (Dimmable)	-S (Suspended)
	24W	W (Warm White)	-B (Black)	-DD (DALI Dimmable)	
			-R (Red)	-TD (Tridonic Dimmable)	
			-O (Orange)		

Cyllene™ HALO DIRECT

DECORATIVE SUSPENDED LED LUMINAIRE



PRODUCT INFORMATION

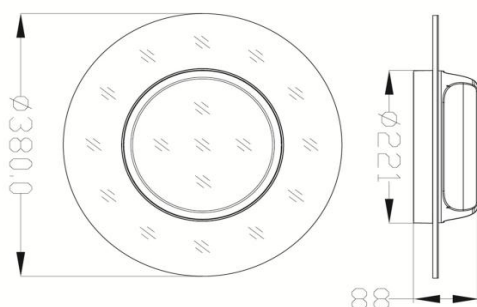


DIMENSIONS	26W/36W	Diameter	Depth	Inner Disc
WEIGHT		380mm	88mm	221mm
HOUSING		2.5kg		
INNER COLOUR		Aluminium with Frosted PC		
IP RATING		Silver, White, Red or Black		
OPERATING TEMPERATURE		IP20		
MOUNTING		-20°C to + 60°C		
		Suspended		

TECHNICAL SPECIFICATIONS

INPUT VOLTAGE	90-264V and 50/60Hz
DIMMABLE OPTIONAL	Optional
LIFESPAN	50,000 hours
POWER	26W, 36W
BEAM ANGLE	360° Up & Down
POWER FACTOR	>0.95
CRI	>80
CCT	~5,700K Cool White ~4,000K Natural White ~3,000K Warm White

SCHEMATIC OF CYLLENE HALO DIRECT



OUTPUT

		26W	36W
COOL	Efficacy	100 lm/W	96 lm/W
WHITE	Luminous Flux	2,600 lm	3,450 lm
NATURAL	Efficacy	92 lm/W	90 lm/W
WHITE	Luminous Flux	2,400 lm	3,250 lm
WARM	Efficacy	85 lm/W	85 lm/W
WHITE	Luminous Flux	2,200 lm	3,050 lm

PRODUCT CODE BUILDER

E.G. CYLLENE-HD26WN-S-ND

PRODUCT CODE	POWER (W)	CCT	INNER COLOUR	DIMMING
CYLLENE-HD	-26W	C (Cool White)	-S (Silver)	-ND (Non-Dimmable)
	-36W	N (Natural White)	-W (White)	-D (Dimmable)
		W (Warm White)	-B (Black)	-DD (DALI Dimmable)
			-R (Red)	-TD (Tridonic Dimmable)

Cyllene™ EXTERNAL OYSTER

WATER PROOF EXTERNAL LED LUMINAIRE



PRODUCT INFORMATION



DIMENSIONS

	Length	Width	Height
SQUARE	315mm	-	99mm
CIRCULAR	315mm	315mm	99mm

HOUSING

VARIATIONS

FRAME COLOUR

IP RATING

MOUNTING

Frosted Plastic with Mounting Base
Circular (standard) or Square
Silver
IP65
Surface Mount

TECHNICAL SPECIFICATIONS

INPUT VOLTAGE

90-264VAC, 50/60Hz

DIMMABLE OPTIONAL

Optional

LIFESPAN

50,000 hours

POWER

18W, 24W

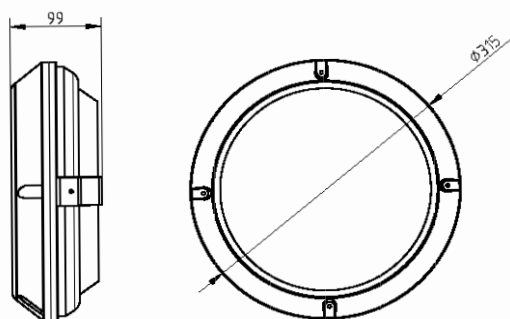
BEAM ANGLE

180°

CCT

~5,000K Cool White >65 (CRI)
~4,000K Natural White >75 (CRI) Standard
~3,000K Warm White >80 (CRI)

SCHEMATIC OF CIRCULAR EXTERNAL OYSTER



OUTPUT

		18W	24W
COOL WHITE	Efficacy	95 lm/W	95 lm/W
	Luminous Flux	1,710 lm	2,280 lm
NATURAL WHITE	Efficacy	92 lm/W	92 lm/W
	Luminous Flux	1,655 lm	2,200 lm
WARM WHITE	Efficacy	85 lm/W	85 lm/W
	Luminous Flux	1,530 lm	2,040 lm

PRODUCT CODE BUILDER

E.G. CYLLENE-EXT-S18W-N180-ND

PRODUCT CODE	TYPE	POWER (W)	CCT	BEAM ANGLE	DIMMABLE
CYLLENE-EXT	-SQ	-S18W	-C (Cool White)	180	-ND (Non-Dimmable)
		-S24W	-N (Natural White)		-D (Dimmable)
			-W (Warm White)		-TD (Tridonic Dimmable)

A photograph of a grand, classical building at night, illuminated with blue and white light. The building features a large arched entrance, a balcony with a balustrade, and a flagpole with a flag. The lighting is dramatic, highlighting the architectural details. The Nebula logo is in the top left corner.

NebulaTM

WALL WASHERS



NEBULA™ LED SERIES

OUR NEBULA™ LUMINAIRES represent unparalleled diversity in the Linear LED market. Rugged, IP66 fittings are ideal for wall washing any edifice or feature in vibrant colours, yet are just as at home on mine sites, or on large machinery providing general or customised illumination.

This series is highly customisable and able to work with a variety of control systems including DMX512 and DALI.

BENEFITS OF OUR RANGE

- SAVES UP TO 80% ON ELECTRICITY COSTS WHEN COMPARED WITH TRADITIONAL SOLUTIONS
- HAVE MULTIPLE LENS ANGLES AVAILABLE FOR PINPOINT ACCURACY
- ARE AVAILABLE IN A RANGE OF COLOUR OPTIONS INCLUDING SPECIFIC CCTS & RGB
- RATED TO IP66
- CONTAINS NO MERCURY WHICH ELIMINATES RECYCLING COSTS
- DOES NOT EMIT UV RADIATION





PRODUCT INFORMATION

MEASUREMENTS

	Length	Width	Depth	Weight
20W	120mm	107mm	180mm	2.5kg
40W	268mm	203mm	161mm	3.8kg
60W	293mm	203mm	161mm	5.0kg
80W	418mm	203mm	161mm	10.2kg
100W	518mm	203mm	161mm	12.0kg

LIGHT SOURCE

Nichia High Power LED

HOUSING

Aluminium alloy and adjustable mounting bracket

BRACKET MATERIAL

ST12

MOUNTING

Standard bracket for wall/ceiling mount

FRAME COLOUR

Silver

IP RATING

IP66

OPERATING TEMP

-40°C to 55°C

TECHNICAL SPECIFICATIONS

INPUT VOLTAGE

85-277VAC, 50/60Hz or 24VDC

DIMMABLE OPTIONAL

5-100%, RGB with DMX 512

LIFESPAN

50,000 hours

EFFICACY

100lm/W

POWER

20W, 40W, 60W, 80W, 100W

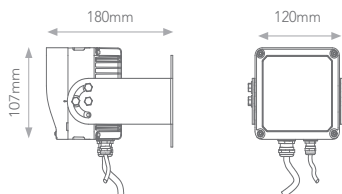
BEAM ANGLE

10°, 40°, 40° Elongated

CCT

5,000-5,500K Cool White*
4,000-4,500K Natural White
2,700-3,000K Warm White
RGB

SCHEMATIC OF MULTI 20W



SCHEMATIC OF MULTI 80W

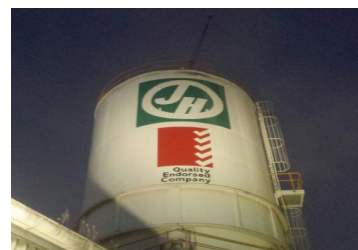
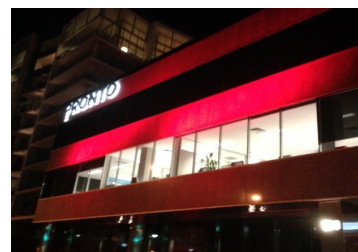


PRODUCT CODE BUILDER

E.G. NEBULA-M40W-40CW-S

PRODUCT CODE	POWER	BEAM ANGLE	CCT	TRIM	DIMMING
NEBULA-M	20W	-10	-WW (Warm White)	-S (Silver)	-DD (DALI)
	40W	-40	-NW (Natural White)		-D (0-10V)
	60W	-40E	-CW (Cool White)		-P (PWM)
	80W		-RGB		
	120W				

TYPICAL APPLICATIONS





PRODUCT INFORMATION

MEASUREMENTS

	Length	Width	Depth	Weight
24W	1000mm	65mm	91mm	4.5kg

LIGHT SOURCE

Osram High Power LED

HOUSING

Aluminium alloy and adjustable mounting brackets

BRACKET MATERIAL

ST12

FRAME COLOUR

Silver, Black

IP RATING

IP66

OPERATING TEMP

-40°C to 55°C

TECHNICAL SPECIFICATIONS

INPUT VOLTAGE

90-305VAC, 50/60Hz or 24VDC

LIFESPAN

50,000 hours

POWER

24W

BEAM ANGLE

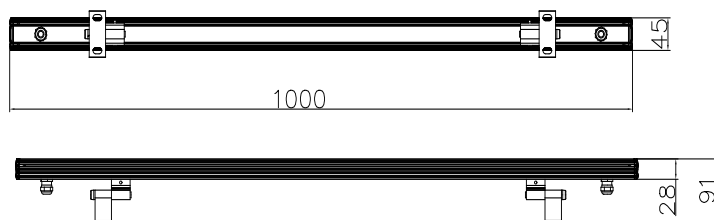
60E° (Elongated), 50E° (Elongated), 30°

CCT

5,000-5,500K Cool White
4,000-4,500K Natural White
2,700-3,000K Warm White
Red, Green or Blue

* FIGURES REPRESENTED IN LUMEN OUTPUT TABLE BELOW AT 2,700K

SCHEMATIC OF LINEAR 24W

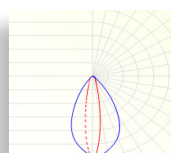


OUTPUT

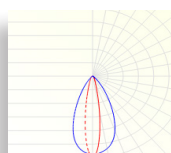
	WARM WHITE
24W	2,040 lm

DISTRIBUTION DIAGRAMS

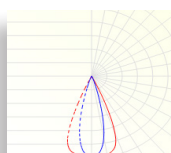
60E° (Elongated)



50E° (Elongated)



30°

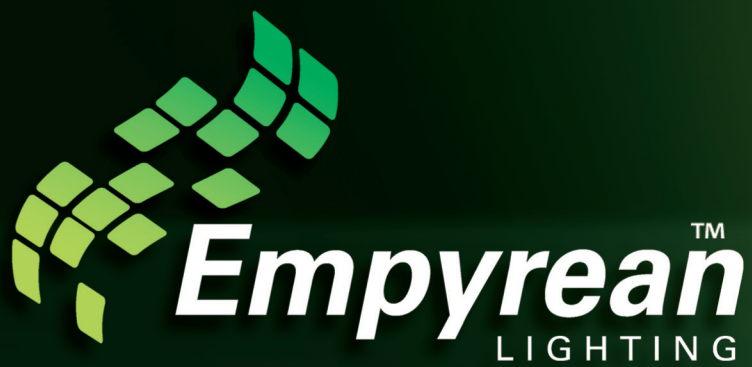


PRODUCT CODE BUILDER

E.G. NEBULA-L18WLV-30-CWB

PRODUCT CODE	POWER	VOLTAGE	BEAM ANGLE	CCT	TRIM
NEBULA-L	24W	LV (24VDC)	-60E	-WW (WarmWhite)	S (Silver)
			-50E	-NW (Natural White)	B (Black)
			-30	-CW (Cool White)	





empyreanlighting.com

CONTACT

p 1300 200 321

a **CAPITAL ONE BUILDING**
Level 2, 11/9 Capital Place
Birtinya Q 4551
AUSTRALIA

e info@empyreanlighting.com

© Copyright Empyrean Lighting