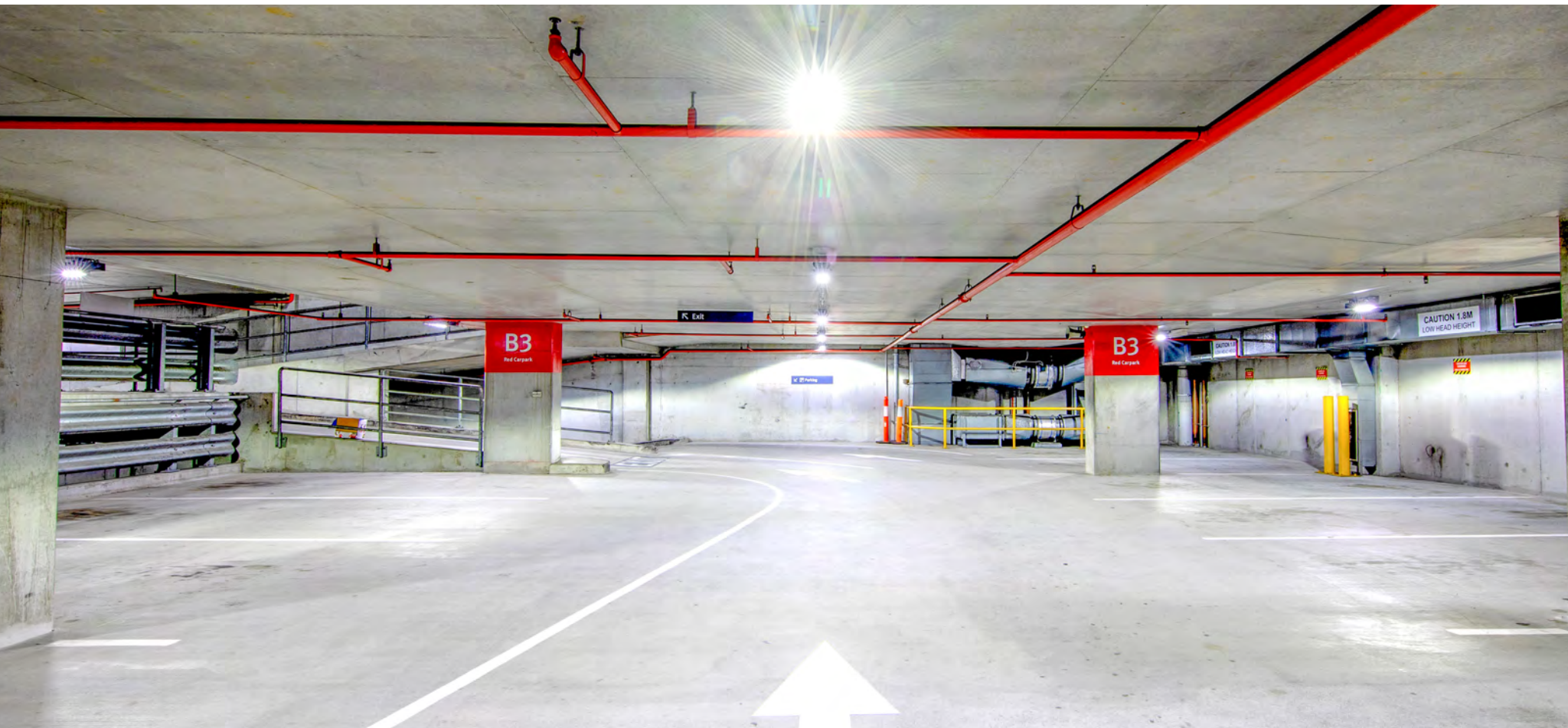


# Smart LED Carpark Lighting Solution

Andromeda Ceramic Luminares



Introducing

# Empyrean Lighting

Established in 2009, Empyrean Lighting are an award winning Sunshine Coast based company who design, manufacturer and supply ultra high quality LED lighting solutions.

The Andromeda range of luminaires features over 9,000 products with cutting edge pixel rail technology suitable for any application worldwide.



## About the Products

# Andromeda Carpark Solutions

- **40W Linear Luminaires** with Motion Sensor technology to replace 40-80W Twin Fluorescents
- **140W Flood Luminaires** suitable for surface mounting to replace 200-450W Metal Halide lamps
- **70W Pole Mount luminaires** ideal for external or open area car parks replacing 250W Metal Halide/Mercury Vapour/HPS lamps

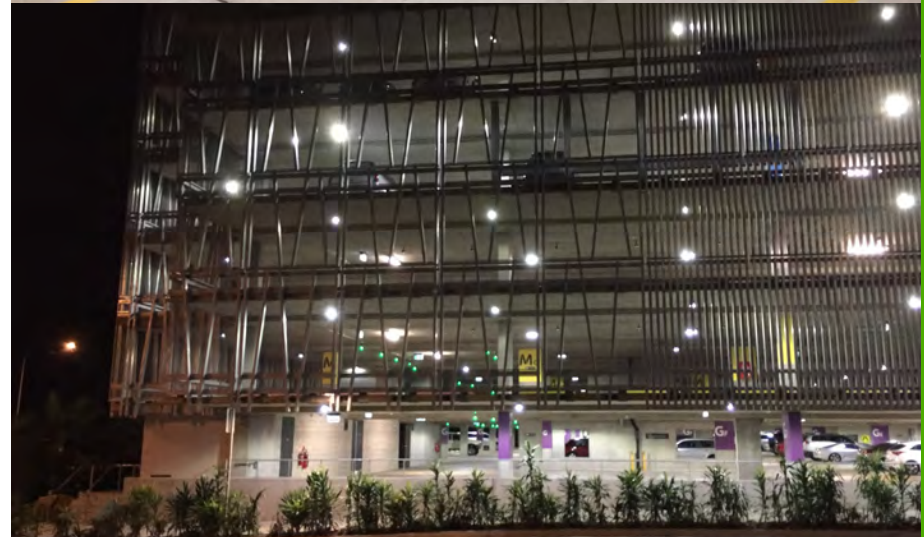


*St Andrews War Memorial Hospital*

## Getting the Facts

# Benefits of Andromeda Luminaires

- Uses 50-70% less electricity than traditional lighting (fluorescent/metal halide/mercury vapour)
- Reduced maintenance with 60,000hr to L70 lifespan
- Motion sensor technology available on Linear units with custom settings to suit application
- Optics designed for carpark applications to ensure retrofit in existing applications can be achieved
- IK08, IP66 with 3G and salinity testing
- Installations worldwide with over 10,000 Andromeda luminaires from the Australia Outback to the Canadian Arctic.



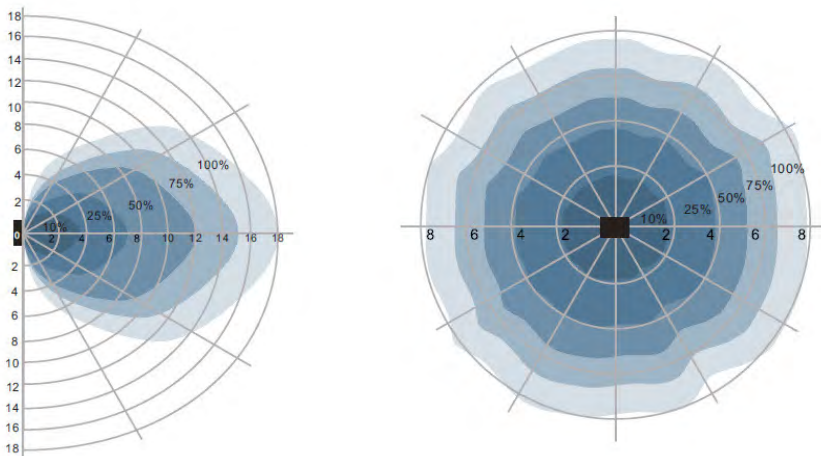
*Sunshine Coast University Hospital*



# Andromeda Motion Sensor Technology



- Independent microwave motion sensors (no mesh network) which can be added to any Andromeda Linear luminaire.
- Adds increased energy savings whilst still maintaining security levels.
- Variety of settings available for hold time (10sec - 30min), standby period (5s - 1hr) and standby dimming level (10% -50%).
- Detection zone of 16m x 10m (max) - typical 2.7m mounting height = 8m diameter radius.
- Detection angle 360 degrees when mounted on ceiling.



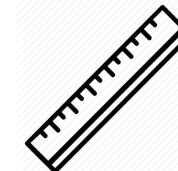
*Click the icon to download the file*

**PRODUCT CODE**

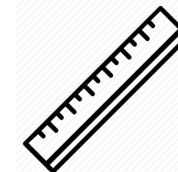
**PRODUCT IMAGE**

**DATASHEET | IES FILE | SCHEMATIC**

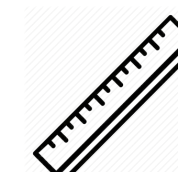
Andromeda-C-LinearMT  
(40W with Motion Sensor)



Andromeda-C-FloodC  
(140W with  
General Distribution)



Andromeda-C-PoleM  
(70W with Street Light  
Distribution)





**"The Andromeda™ luminaires provided meet all of our expectations for this application including motion sensor technology to ensure maximum savings are achieved. We are very happy with the design, product and service we received from Empyrean Lighting and are looking forward to working with them on future projects."**

**David Gray, Engineering Manager at The Wesley Hospital**





*St Andrews War Memorial Hospital*

How we guarantee the best results

## Comprehensive Lighting Designs

- Designed to comply with AS/NZS 1680.2.1:2008
- Ability to reuse existing locations for retrofit applications
- Ensures uniform light distribution (no hot spots) and identifies any problematic areas

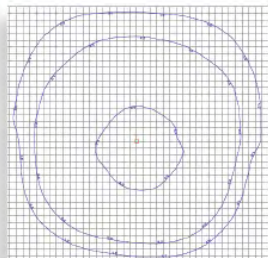
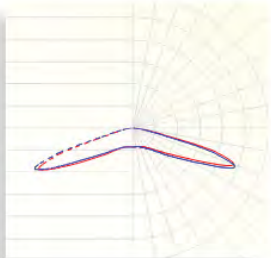


Example

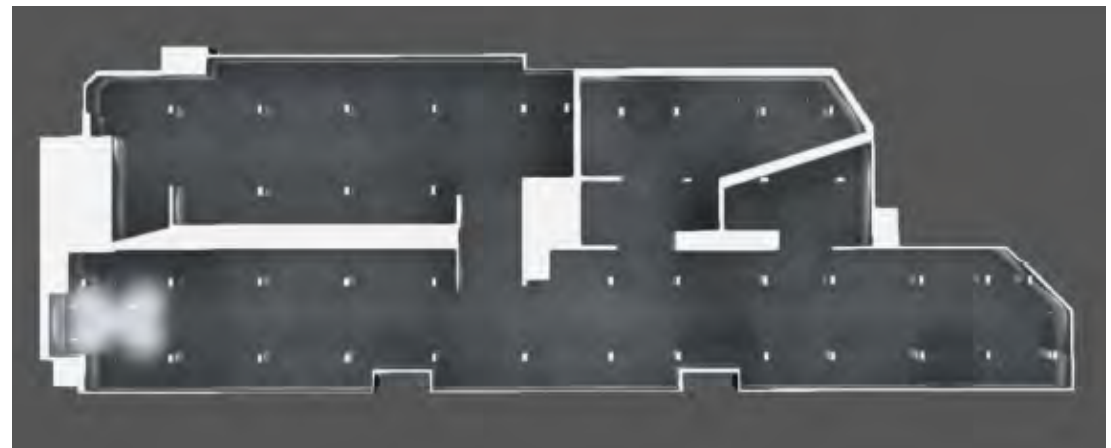
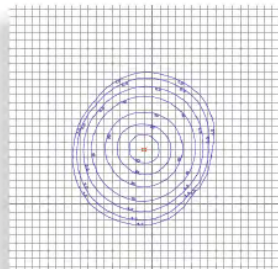
# DIALux Lighting Designs

## Light Distribution (Optics)

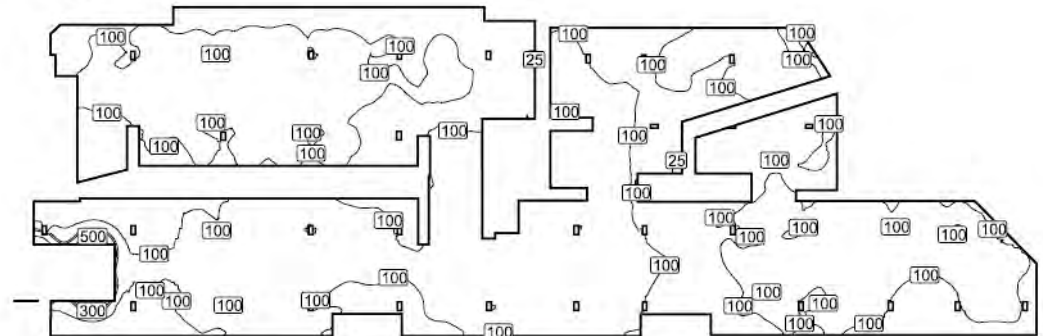
LENS K18: 146°



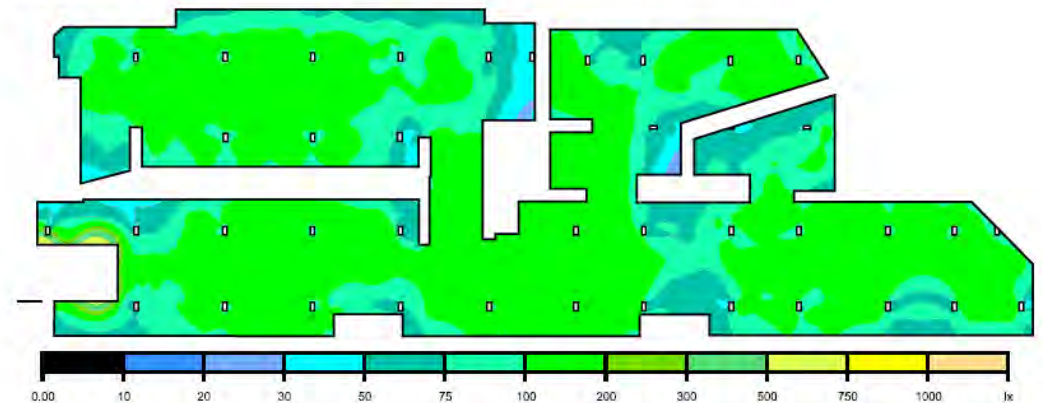
LENS K81: 102°



Site Recreation in DIALux Lighting Design Software



Designed Lux Values (above) & False Colour Render (below)



# Motion Sensor Detection Example

Sensors switch on lights when motion is detected



Additional sensors are activated with movement



Hold time keeps the original lights activated



Standby period ends and light turns off





# Contact Us

Let us discuss your next carpark project and offer to design using our Andromeda technology.

Gemma Layfield - General Manager  
[gemma@emptyreanlighting.com](mailto:gemma@emptyreanlighting.com) | 0418 104 054

