



StrataTM

LED Retrofit Fixture

Class I Zone 2, Group IIC, T5



OPTICS DESIGNED
SPECIFICALLY FOR
INDUSTRIAL APPLICATIONS
INCLUDING WALKWAYS,
PLATFORMS, PUMP ALLEYS &
PIPERACKS

STRATA LED RETROFIT FIXTURE

OUR STRATA™ LED fixture is purpose designed to fit onto any existing site stanchion mount pole. The light weight design allows for easy installation and eliminates the need for scaffolding, ladders, fall arrest or working at heights - removing all safety concerns and costs.

As a fully finished unit, which includes pole, driver and luminaire, it drastically reduces labour time. Learn more about the process via the installation video - <https://www.youtube.com/watch?v=WTxGD0EuJxU>

BENEFITS OF OUR RANGE

- USES 50%-75% LESS ELECTRICITY THAN HIGH INTENSITY DISCHARGE LUMINAIRES
- LIFESPAN OF 60,000 HRS+ (TO L70) & IP66
- LIGHT WEIGHT UNIT FOR EASY HANDLING AND INSTALL
- ONE PEICE DESIGN (NO SEPERATE PARTS)
- REMOTE DRIVER ALLOWS FOR HIGH TEMPERATURE APPLICATIONS AND EASY & EFFICIENT REPLACEMENT
- INSTANT ON/OFF
- SPECIALTY CLAMPS AVAILABLE FOR HIGH VIBRATION AREAS
- LOW INRUSH & OPERATING CURRENTS
- NO HARMFUL OR TOXIC SUBSTANCES ARE CONTAINED IN THIS FIXTURE
- SELF CLEANING PIXEL DESIGN
- 5 YEAR COMPREHENSIVE WARRANTY



Strata™ LED Retrofit Fixture

HIGH INTENSITY LED RETROFIT FIXTURE

Class I Zone 2, Group IIC, T5
UL 844:2012 Ed.13+R:060ct2017
CSA C22.2#137:1981 Ed.1 +G1



PRODUCT INFORMATION

WEIGHT RANGE	25lbs
LIGHT SOURCE	Nichia High Power LED
LENS	Lens 31- 156° x 70° (Walkways/Conveyors) Lens 81 - 100° (General) Lens 50 - 108° x 70° (Wall Flood)
HOUSING	6063 Aluminium (Marine Grade)
IK RATING	IK10
IP RATING	IP66
OPERATING TEMP	-40°C to 55°C (as standard)

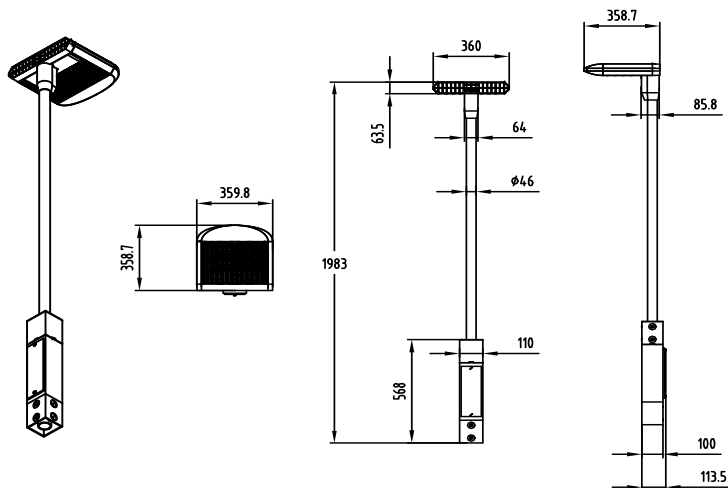
TECHNICAL SPECIFICATIONS

INPUT VOLTAGE	120-277V, 347V available on request
DIMMABLE OPTIONAL	Optional- 5-100%
LIFESPAN	60,000 hours to L70 B10
POWER	45W, 70W
LUMINOUS EFFICACY	C - 118lm/W
CCT	5,000-5,500K Cool White >65 (CRI)

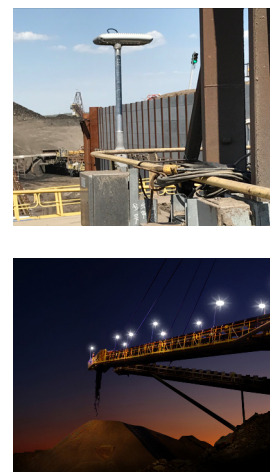
* CCT available in ~4000K Natural White & ~3000K Warm White.

Images of 70W Unit

SCHEMATIC OF STRATA 70W



TYPICAL APPLICATIONS



PRODUCT CODE BUILDER

E.G. STR-1-84-45-1-NH-1

MODEL	EXISTING ON SITE PIPE SIZE	REQUIRED FIXTURE HEIGHT (FROM WALKWAY)	FIXTURE WATTAGE	MOUNTING METHOD	CLASS RATING	VOLTAGE
STR	-1 (1 INCH) -2 (1.25 INCH) -3 (1.5 INCH)	-84 (7 FEET) -96 (8 FEET)	-45 -70	-1 (VIBRATION COLLAR) -2 (SET SCREWS)	- NH (NON-HAZARDOUS) - HZ (CLASS 1 DIVISION 2)	-1 (120-277VAC) -2 (347VAC)