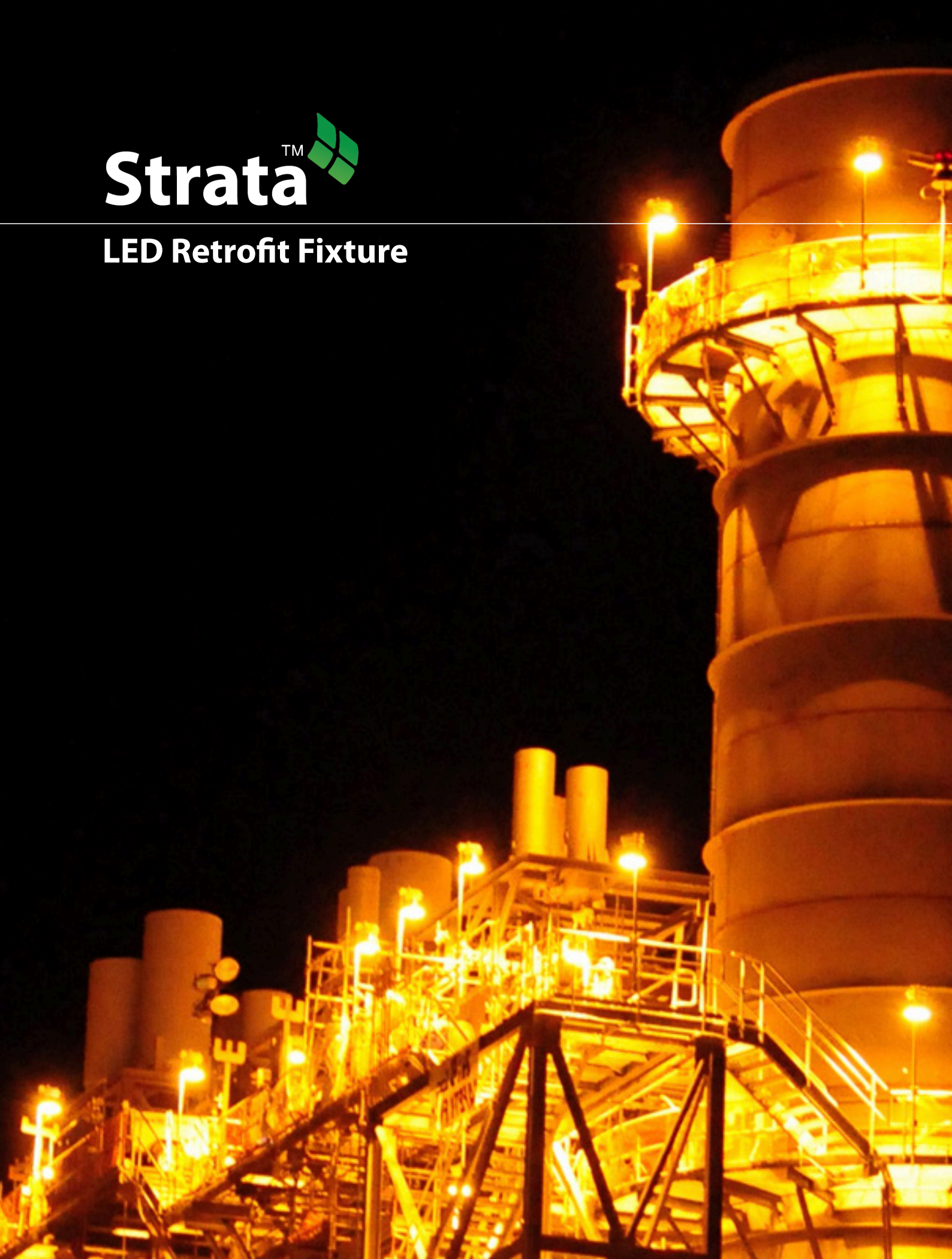




StrataTM

LED Retrofit Fixture





OPTICS DESIGNED
SPECIFICALLY FOR
INDUSTRIAL APPLICATIONS
INCLUDING WALKWAYS,
PLATFORMS, PUMP ALLEYS &
PIPERACKS

STRATA LED RETROFIT FIXTURE

OUR STRATA™ LED fixture is purpose designed to fit onto any existing site stanchion mount pole. The light weight design allows for easy installation and eliminates the need for scaffolding, ladders, fall arrest or working at heights - removing all safety concerns and costs.

As a fully finished luminaire there is no need for onsite assembly, drastically reducing labour time. Learn more about the process of upgrading to the Strata LED contact Kyle Gilmour - (780) 298 9992 or kyle@empyreanlighting.com

BENEFITS OF OUR RANGE

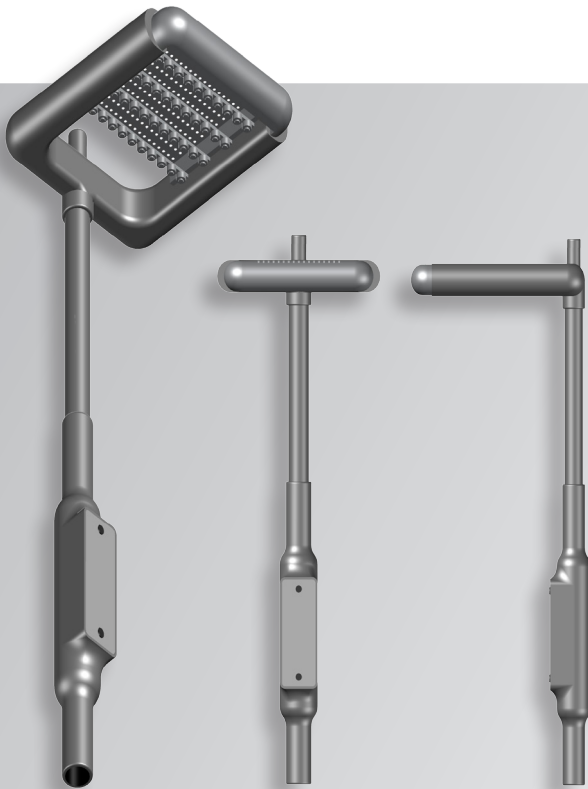
- USES 50%-75% LESS ELECTRICITY THAN HIGH INTENSITY DISCHARGE LUMINAIRES
- LIFESPAN OF 50,000 HRS+ (TO L70) & IP66
- LIGHT WEIGHT ASSEMBLY FOR EASY HANDLING AND INSTALL
- ONE PEICE DESIGN (NO SEPERATE PARTS)
- REMOTE DRIVER ALLOWS FOR HIGH TEMPERATURE APPLICATIONS AND EASY & EFFICIENT REPLACEMENT
- INSTANT ON/OFF
- SPECIALTY CLAMPS AVAILABLE FOR HIGH VIBRATION AREAS
- LOW INRUSH & OPERATING CURRENTS
- NO HARMFUL OR TOXIC SUBSTANCES ARE CONTAINED IN THIS FIXTURE
- SELF CLEANING PIXEL DESIGN
- 5 YEAR WARRANTY



Strata™ LED Retrofit Fixture

HIGH INTENSITY LED RETROFIT FIXTURE

HIGH POWER
 120-277VAC
 SHOCK RESISTANT
 IP66 RATING
 80 CRI
 L70
 PF0.9
 50,000 HRS



PRODUCT INFORMATION



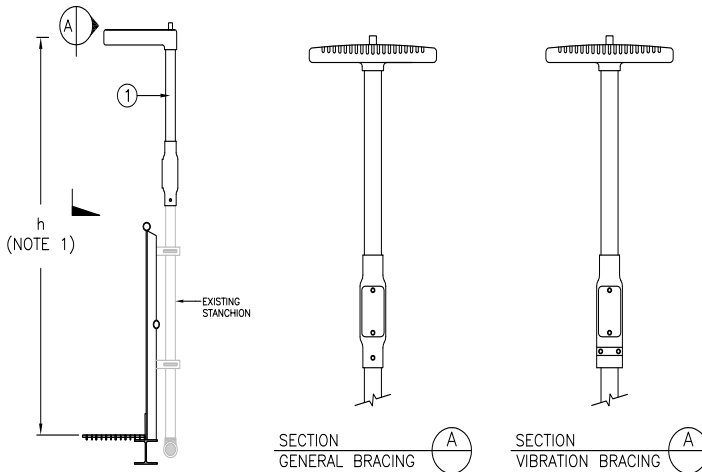
| | |
|-----------------------|--|
| WEIGHT RANGE | 25lbs |
| LIGHT SOURCE | Nichia High Power LED |
| LENS | Lens 31 - 156° x 70° (Walkways/Conveyors) Lens 81 - 100° (General) Lens 50 - 108° x 70° (Wall Flood) |
| HOUSING | 6063 Aluminium (Marine Grade) |
| IP RATING | IP66 |
| OPERATING TEMP | -50°C to 55°C (as standard) |

TECHNICAL SPECIFICATIONS

| | |
|--------------------------|-------------------------------------|
| INPUT VOLTAGE | 120-277V, 347V available on request |
| DIMMABLE OPTIONAL | Optional- 5-100% |
| LIFESPAN | 50,000 hours |
| POWER | 50W |
| LUMINOUS EFFICACY | XPB-118lm/W |
| CCT | 5,000-5,500K Cool White* >65 (CRI) |

* CCT available in ~4000K Natural White & ~3000K Warm White.

SCHEMATIC OF STRATA 50W



TYPICAL APPLICATIONS



PRODUCT CODE BUILDER

E.G. STR-1-84-50-1-NH-1

| MODEL | EXISTING ON SITE PIPE SIZE | REQUIRED FIXTURE HEIGHT (FROM WALKWAY) | FIXTURE WATTAGE | MOUNTING METHOD | CLASS RATING | VOLTAGE |
|-------|--|--|-----------------|--|---|--------------------------------|
| STR | -1 (1 INCH) -2 (1.25 INCH) -3 (1.5 INCH) | -84 (7 FEET) -96 (8 FEET) -120 (10 FEET) | -50 | -1 (VIBRATION COLLAR) -2 (SET SCREWS) | - NH (NON-HAZARDOUS) - HZ (CLASS 1 DIVISION 2) | -1 (120-277VAC) -2 (347VAC) |

For more information - contact Kyle Gilmour (780) 298 9992 | kyle@empyreanlighting.com