

AndromedaTM

MINING

GANTRIES & WALKWAYS

GANTRY & WALKWAY APPLICATIONS

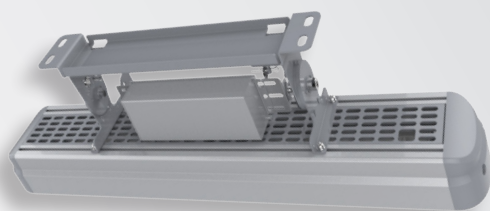
SAFE MOVEMENT FOR PERSONNEL is paramount on all mine and industrial sites. Our Andromeda linear and park series ensures safety guidelines are met through independent lensing, rugged IP66 construction, and a proven track record on diverse sites from the Canadian Arctic to the Australian Outback.

BENEFITS OF OUR ANDROMEDA RANGE

- USES 50%-75% LESS ELECTRICITY THAN HIGH INTENSITY DISCHARGE LUMINAIRES
- LIFESPAN OF 50,000 HRS+ (TO L70)
- IS IP66
- IS AVAILABLE IN A VARIETY OF POWER, LENS TYPES & ARTICULATIONS FOR ANY ENVIRONMENT OR APPLICATION
- AVAILABLE WITH EMERGENCY BATTERY PACKS
- START UP AND SHUT DOWN IMMEDIATELY
- PERFECT FOR PHOTO OR MOTION SENSOR CONTROLS
- HAS LOW INRUSH & OPERATING CURRENTS
- CONTAINS NO HARMFUL, TOXIC SUBSTANCES (NO HG) & ARE RECYCLABLE
- DOES NOT EMIT UV RADIATION & DOES NOT REQUIRE UV BLOCKING FILTERS
- HAS ROBUST CONSTRUCTION, PERFECT FOR TOUGH & CHALLENGING CONDITIONS
- ELIMINATES MERCURY RECYCLING COSTS

Andromeda™ C Linear

CERAMIC LED LINEAR FLOODLIGHTS



PRODUCT INFORMATION

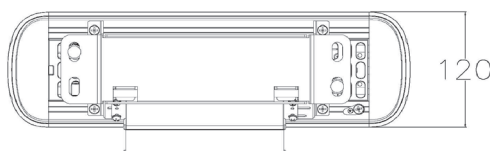
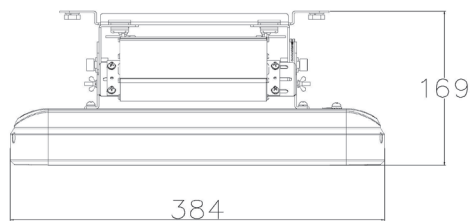
LIGHT SOURCE	Nichia High Power LED
HOUSING	6063 Aluminium (Marine Grade) Ceramic Diode Seat with Polycarbonate Pixel Rails ST12
BRACKET MATERIAL	
BRACKET TYPE	Wall Mount/Surface Mount (Adjustable)
FRAME COLOUR	Silver, White, Black
MECHANICAL IMPACT RESISTANCE	IK08 (Bracket & Frame Only)
IP RATING	IP66
OPERATING TEMP	-40°C to 55°C

TECHNICAL SPECIFICATIONS

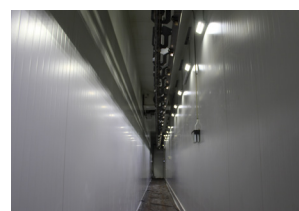
INPUT VOLTAGE	90-305VAC, 50/60Hz (Standard)
DIMMABLE	Non-dimmable standard
LIFESPAN	50,000 hours to L70
POWER	40W - 125W
POWER FACTOR	0.95
BEAM ANGLE	Distribution Ranges - Refer to lens options page IESNA Type I,II,III, IV & V distribution
LUMINOUS EFFICACY	120 lm/W
CCT	5,000-5,500K Cool White >70 (CRI) Standard

Additional Options - Frame options 304SS & 316SS. Dimmable with 0-10V, PWM, DALI, PE Cell or Nema 7. Varying input voltage including 24V DC to 480V. CCT Options - ~4000K Natural White & ~3000K Warm White.

SCHEMATIC OF ANDROMEDA C LINEAR 40W & 45W



TYPICAL APPLICATIONS



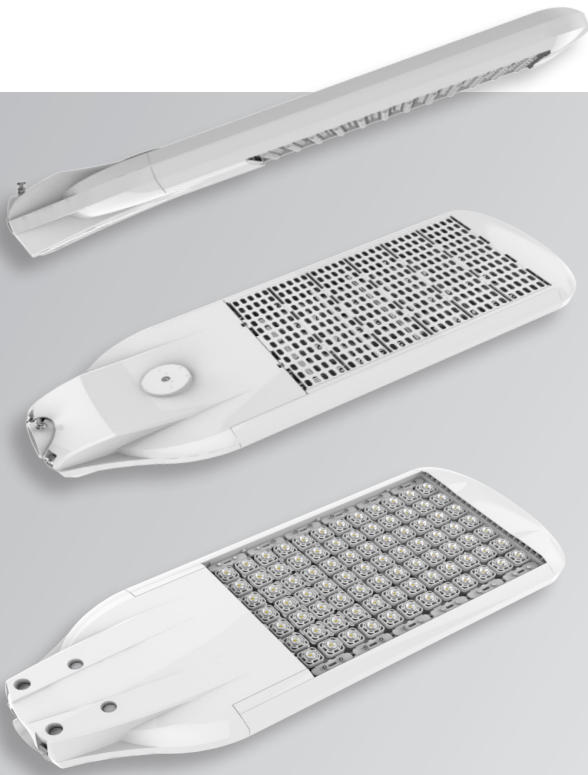
PRODUCT CODE	POWER	OUTPUT* (LUMENS)	INPUT CURRENT (mA)	LENGTH (MM)	WIDTH (MM)	DEPTH (MM)	WEIGHT (KG)
Andromeda-C-Linear-40	40W	4,400	800mA	384	120	169	2.6kg
Andromeda-C-Linear-45	45W	5,400	800mA	384	120	169	2.6kg
Andromeda-C-Linear-70	70W	8,400	800mA	552	120	169	3.6kg
Andromeda-C-Linear-85	85W	10,200	800mA	552	120	169	3.7kg
Andromeda-C-Linear-110	110W	13,200	800mA	990	120	169	6.7kg
Andromeda-C-Linear-125	125W	15,000	800mA	990	120	169	6.8kg

Andromeda™ C Pole Mount

CERAMIC POLE MOUNT LED LUMINAIRE

NICHIA HIGH POWER 90-305VAC SHOCK RESISTANT IP66 RATING 70 CRI L70 50,000 HRS 0.95 POWER FACTOR

NS433 N26539 EUT CE RoHS



PRODUCT INFORMATION

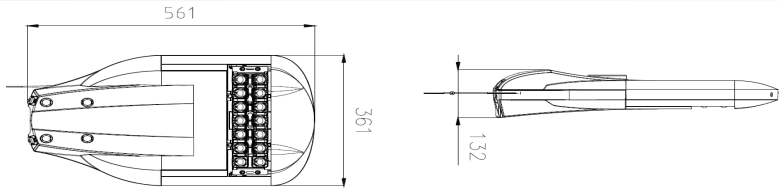
LIGHT SOURCE	Nichia High Power LED
HOUSING	6063 Aluminium (Marine Grade) Ceramic Diode Seat with Polycarbonate Pixel Rails ST12
BRACKET MATERIAL	Pole Mount 60mm Outer Diameter with Adjustable Angle Mount -10° to 15° & Secure Point Cable
BRACKET TYPE	Silver, White
FRAME COLOUR	IK08 (Bracket & Frame Only)
MECHANICAL IMPACT RESISTANCE	IP66
IP RATING	-40°C to 70°C
OPERATING TEMP	

TECHNICAL SPECIFICATIONS

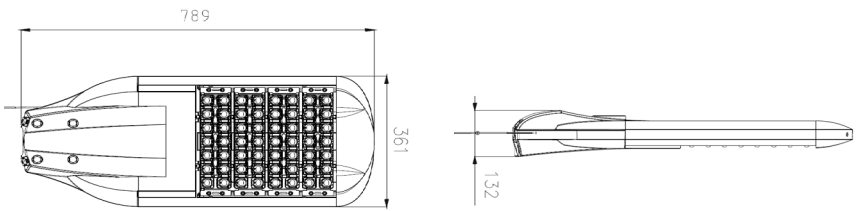
INPUT VOLTAGE	90-305VAC, 50/60Hz (Standard)
DIMMABLE	Non-dimmable standard
LIFESPAN	50,000 hours to L70
POWER	40W - 250W
POWER FACTOR	0.95
BEAM ANGLE	Distribution Ranges - Refer to lens options page IESNA Type I,II,III, IV & V distribution
LUMINOUS EFFICACY	120 lm/W
CCT	5,000-5,500K Cool White >70 (CRI) Standard

Additional Options - Frame options 304SS & 316SS. Dimmable with 0-10V, PWM, DALI, PE Cell or Nema 7. Varying input voltage including 24V DC to 480V. CCT Options - ~4000K Natural White & ~3000K Warm White.

SCHEMATIC OF ANDROMEDA C POLE 70W & 85W



SCHEMATIC OF ANDROMEDA C POLE 140W & 160W



TYPICAL APPLICATIONS



PRODUCT CODE	POWER	OUTPUT* (LUMENS)	INPUT CURRENT (mA)	LENGTH (MM)	WIDTH (MM)	DEPTH (MM)	WEIGHT (KG)
Andromeda-C-PoleM-40	40W	4,800	800mA	561	361	132	8.3kg
Andromeda-C-PoleM-45	45W	5,400	800mA	561	361	132	8.5kg
Andromeda-C-PoleM-70	70W	8,400	800mA	637	361	132	9.4kg
Andromeda-C-PoleM-85	85W	10,200	800mA	637	361	132	9.5kg
Andromeda-C-PoleM-110	110W	13,200	800mA	713	361	132	10.0kg
Andromeda-C-PoleM-125	125W	15,000	800mA	713	361	132	10.6kg
Andromeda-C-PoleM-140	140W	16,800	800mA	789	361	132	11.0kg
Andromeda-C-PoleM-160	160W	19,200	800mA	789	361	132	11.6kg
Andromeda-C-PoleM-180	180W	21,600	800mA	865	361	132	12.0kg
Andromeda-C-PoleM-210	210W	25,200	800mA	865	361	132	12.5kg
Andromeda-C-PoleM-220	220W	26,400	800mA	941	361	132	13.0kg
Andromeda-C-PoleM-250	250W	30,000	800mA	941	361	132	13.8kg



P 1300 200 321

IES Files available at empyreanlighting.com/tools/ies-files

© COPYRIGHT EMPYREAN LIGHTING



AndromedaTM

MINING

CONVEYOR



CONVEYOR APPLICATIONS

WITH ULTRA-HIGH INTENSITY, variable colour temperature and wavelength and ultra-durable construction, our Andromeda series luminaires are ideal for conveyor applications. In addition, their self-cleaning design and limited surface area ensures that performance values remain high, while maintenance cycles are low.

BENEFITS OF OUR ANDROMEDA RANGE

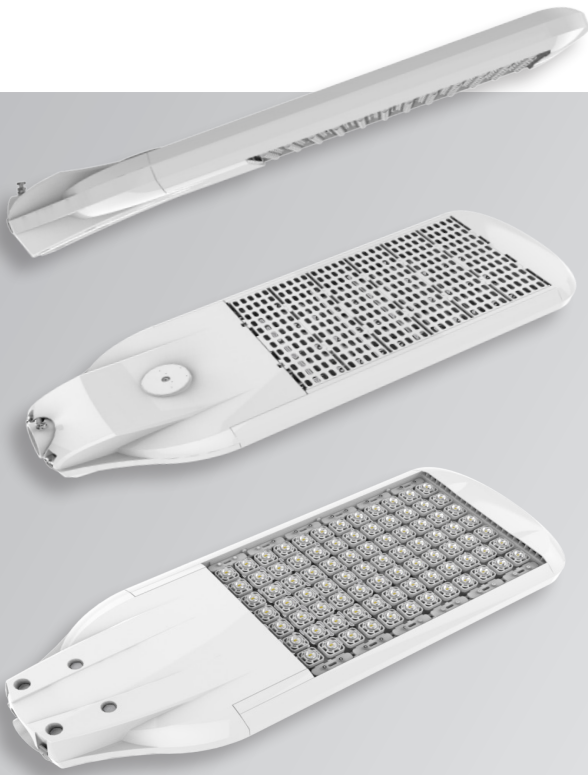
- USES 50%-75% LESS ELECTRICITY THAN HIGH INTENSITY DISCHARGE LUMINAIRES
- LIFESPAN OF 50,000 HRS+ (TO L70)
- IS IP66
- IS AVAILABLE IN A VARIETY OF POWER, LENS TYPES & ARTICULATIONS FOR ANY ENVIRONMENT OR APPLICATION
- AVAILABLE WITH EMERGENCY BATTERY PACKS
- START UP AND SHUT DOWN IMMEDIATELY
- PERFECT FOR PHOTO OR MOTION SENSOR CONTROLS
- HAS LOW INRUSH & OPERATING CURRENTS
- CONTAINS NO HARMFUL, TOXIC SUBSTANCES (NO HG) & ARE RECYCLABLE
- DOES NOT EMIT UV RADIATION & DOES NOT REQUIRE UV BLOCKING FILTERS
- HAS ROBUST CONSTRUCTION, PERFECT FOR TOUGH & CHALLENGING CONDITIONS
- ELIMINATES MERCURY RECYCLING COSTS

Andromeda™ C Pole Mount

CERAMIC POLE MOUNT LED LUMINAIRE

NICHIA HIGH POWER 90-305VAC SHOCK RESISTANT IP66 RATING 70 CRI L70 50,000 HRS 0.95 POWER FACTOR

NS433 N26539 EUL CE RoHS



PRODUCT INFORMATION

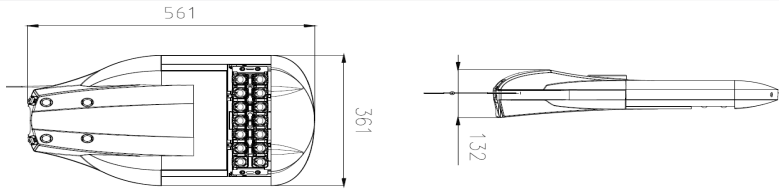
LIGHT SOURCE	Nichia High Power LED
HOUSING	6063 Aluminium (Marine Grade) Ceramic Diode Seat with Polycarbonate Pixel Rails ST12
BRACKET MATERIAL	Pole Mount 60mm Outer Diameter with Adjustable Angle Mount -10° to 15° & Secure Point Cable
BRACKET TYPE	Silver, White
FRAME COLOUR	IK08 (Bracket & Frame Only)
MECHANICAL IMPACT RESISTANCE	IP66
IP RATING	-40°C to 70°C
OPERATING TEMP	

TECHNICAL SPECIFICATIONS

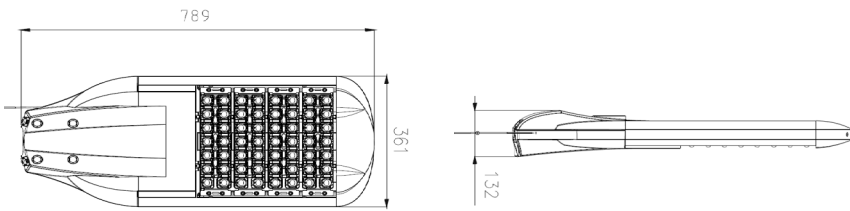
INPUT VOLTAGE	90-305VAC, 50/60Hz (Standard)
DIMMABLE	Non-dimmable standard
LIFESPAN	50,000 hours to L70
POWER	40W - 250W
POWER FACTOR	0.95
BEAM ANGLE	Distribution Ranges - Refer to lens options page IESNA Type I,II,III, IV & V distribution
LUMINOUS EFFICACY	120 lm/W
CCT	5,000-5,500K Cool White >70 (CRI) Standard

Additional Options - Frame options 304SS & 316SS. Dimmable with 0-10V, PWM, DALI, PE Cell or Nema 7. Varying input voltage including 24V DC to 480V. CCT Options - ~4000K Natural White & ~3000K Warm White.

SCHEMATIC OF ANDROMEDA C POLE 70W & 85W



SCHEMATIC OF ANDROMEDA C POLE 140W & 160W



TYPICAL APPLICATIONS



PRODUCT CODE	POWER	OUTPUT* (LUMENS)	INPUT CURRENT (mA)	LENGTH (MM)	WIDTH (MM)	DEPTH (MM)	WEIGHT (KG)
Andromeda-C-PoleM-40	40W	4,800	800mA	561	361	132	8.3kg
Andromeda-C-PoleM-45	45W	5,400	800mA	561	361	132	8.5kg
Andromeda-C-PoleM-70	70W	8,400	800mA	637	361	132	9.4kg
Andromeda-C-PoleM-85	85W	10,200	800mA	637	361	132	9.5kg
Andromeda-C-PoleM-110	110W	13,200	800mA	713	361	132	10.0kg
Andromeda-C-PoleM-125	125W	15,000	800mA	713	361	132	10.6kg
Andromeda-C-PoleM-140	140W	16,800	800mA	789	361	132	11.0kg
Andromeda-C-PoleM-160	160W	19,200	800mA	789	361	132	11.6kg
Andromeda-C-PoleM-180	180W	21,600	800mA	865	361	132	12.0kg
Andromeda-C-PoleM-210	210W	25,200	800mA	865	361	132	12.5kg
Andromeda-C-PoleM-220	220W	26,400	800mA	941	361	132	13.0kg
Andromeda-C-PoleM-250	250W	30,000	800mA	941	361	132	13.8kg



P 1300 200 321

IES Files available at empyreanlighting.com/tools/ies-files

© COPYRIGHT EMPYREAN LIGHTING



AndromedaTM

MINING

PROCESS AREAS



PROCESS AREA APPLICATIONS

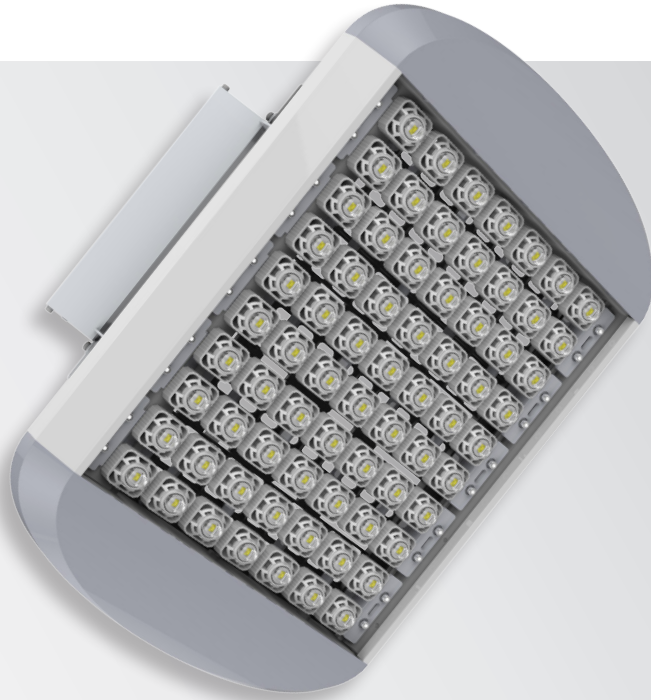
HIGH TEMPERATURES, INTENSE VIBRATION, AND CRITICAL OPERATIONS. These are common to virtually all process areas in a mine or industrial site. Our Andromeda luminaires are a perfect and proven solution for ball mills, crushers, agitators and any other challenging application where light quality is key.

BENEFITS OF OUR ANDROMEDA RANGE

- USES 50%-75% LESS ELECTRICITY THAN HIGH INTENSITY DISCHARGE LUMINAIRES
- LIFESPAN OF 50,000 HRS+ (TO L70)
- IS IP66
- IS AVAILABLE IN A VARIETY OF POWER, LENS TYPES & ARTICULATIONS FOR ANY ENVIRONMENT OR APPLICATION
- AVAILABLE WITH EMERGENCY BATTERY PACKS
- START UP AND SHUT DOWN IMMEDIATELY
- PERFECT FOR PHOTO OR MOTION SENSOR CONTROLS
- HAS LOW INRUSH & OPERATING CURRENTS
- CONTAINS NO HARMFUL, TOXIC SUBSTANCES (NO HG) & ARE RECYCLABLE
- DOES NOT EMIT UV RADIATION & DOES NOT REQUIRE UV BLOCKING FILTERS
- HAS ROBUST CONSTRUCTION, PERFECT FOR TOUGH & CHALLENGING CONDITIONS
- ELIMINATES MERCURY RECYCLING COSTS

Andromeda™ C Flood

CERAMIC LED FLOODLIGHT



PRODUCT INFORMATION

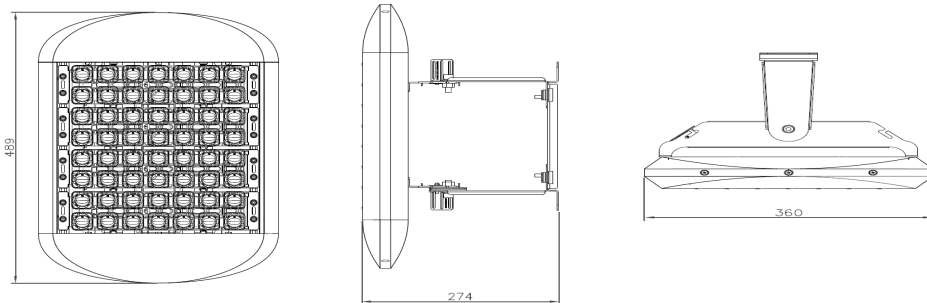
LIGHT SOURCE	Nichia High Power LED
HOUSING	6063 Aluminium (Marine Grade) Ceramic Diode Seat with Polycarbonate Pixel Rails ST12
BRACKET MATERIAL	Wall Mount, Surface Mount, Suspended (Hook)
BRACKET TYPE	Wall Mount, Surface Mount, Suspended (Hook)
FRAME COLOUR	Silver, White, Black
MECHANICAL IMPACT RESISTANCE	IK08 (Bracket & Frame Only)
IP RATING	IP66
OPERATING TEMP	-40°C to 55°C

TECHNICAL SPECIFICATIONS

INPUT VOLTAGE	90-305VAC, 50/60Hz (Standard)
DIMMABLE	Non-dimmable standard
LIFESPAN	50,000 hours to L70
POWER	40W - 410W
POWER FACTOR	0.95
BEAM ANGLE	Distribution Ranges - Refer to lens options page
LUMINOUS EFFICACY	IESNA Type I,II,III, IV & V distribution
CCT	120 lm/W 5,000-5,500K Cool White >70 (CRI) Standard

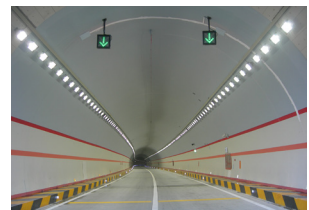
Additional Options - Frame options 304SS & 316SS. Dimmable with 0-10V, PWM, DALI, PE Cell or Nema 7. Varying input voltage including 24V DC to 480V. CCT Options - ~4000K Natural White & ~3000K Warm White.

SCHEMATIC OF ANDROMEDA C FLOOD 140W & 165W



PRODUCT CODE	POWER	OUTPUT (LUMENS)	INPUT CURRENT (mA)	LENGTH (MM)	WIDTH (MM)	DEPTH (MM)	WEIGHT (KG)
Andromeda-C-Flood-40	40W	4,800	800mA	261	360	274	4.2kg
Andromeda-C-Flood-45	45W	5,400	800mA	261	360	274	4.5kg
Andromeda-C-Flood-70	70W	8,400	800mA	337	360	274	5.1kg
Andromeda-C-Flood-85	85W	10,200	800mA	337	360	274	5.5kg
Andromeda-C-Flood-110	110W	13,200	800mA	413	360	274	5.9kg
Andromeda-C-Flood-125	125W	15,000	800mA	413	360	274	6.3kg
Andromeda-C-Flood-140	140W	16,800	800mA	489	360	274	6.7kg
Andromeda-C-Flood-165	165W	19,800	800mA	489	360	274	7.2kg
Andromeda-C-Flood-180	180W	21,600	800mA	565	360	274	8.3kg
Andromeda-C-Flood-210	210W	25,200	800mA	565	360	274	8.6kg
Andromeda-C-Flood-220	220W	26,400	800mA	641	360	274	9.2kg
Andromeda-C-Flood-250	250W	30,000	800mA	641	360	274	10.4kg
Andromeda-C-Flood-280	280W	33,600	800mA	717	360	274	12.0kg
Andromeda-C-Flood-320	320W	38,400	800mA	869	360	274	14.8kg
Andromeda-C-Flood-360	360W	43,200	800mA	945	360	274	15.0kg
Andromeda-C-Flood-370	370W	44,400	800mA	869	360	274	15.3kg
Andromeda-C-Flood-410	410W	49,200	800mA	945	360	274	16.1kg

TYPICAL APPLICATIONS

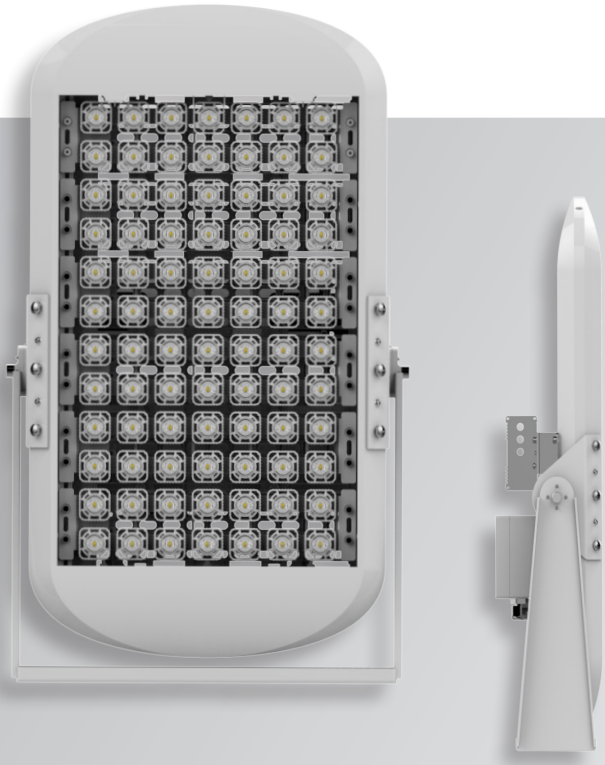


Andromeda™ C High Mast

CERAMIC LED HIGH MAST LUMINAIRE

NICHIA HIGH POWER 90-305VAC SHOCK RESISTANT IP66 RATING 70 CRI L70 50,000 HRS 0.95 POWER FACTOR

RoHS CE IEC UL CCC



PRODUCT INFORMATION

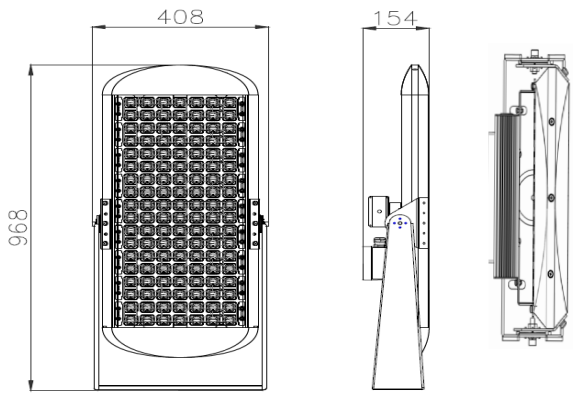
LIGHT SOURCE	Nichia High Power LED
HOUSING	6063 Aluminium (Marine Grade) Ceramic Diode Seat with Polycarbonate Pixel Rails
BRACKET MATERIAL	ST12
BRACKET TYPE	Trunnion Arm
FRAME COLOUR	Silver, White, Black
MECHANICAL IMPACT RESISTANCE	IK08 (Bracket & Frame Only)
IP RATING	IP66
OPERATING TEMP	-40°C to 55°C

TECHNICAL SPECIFICATIONS

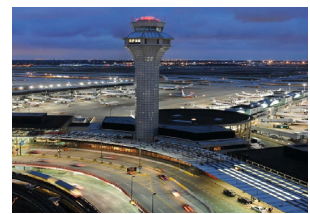
INPUT VOLTAGE	90-305VAC, 50/60Hz (Standard), Varying input available from 24V DC to 480V.
DIMMABLE	Non-dimmable standard
LIFESPAN	50,000 hours to L70
POWER	140W - 410W
POWER FACTOR	0.95
BEAM ANGLE	Distribution Ranges - Refer to lens options page
LUMINOUS EFFICACY	IESNA Type I,II,III, IV & V distribution
CCT	120 lm/W 5,000-5,500K Cool White >70 (CRI) Standard

Additional Options - Frame options 304SS & 316SS. Dimmable with 0-10V, PWM, DALI, PE Cell or Nema 7. CCT Options - ~4000K Natural White & ~3000K Warm White.

SCHEMATIC OF ANDROMEDA C HMAST 360W & 410W



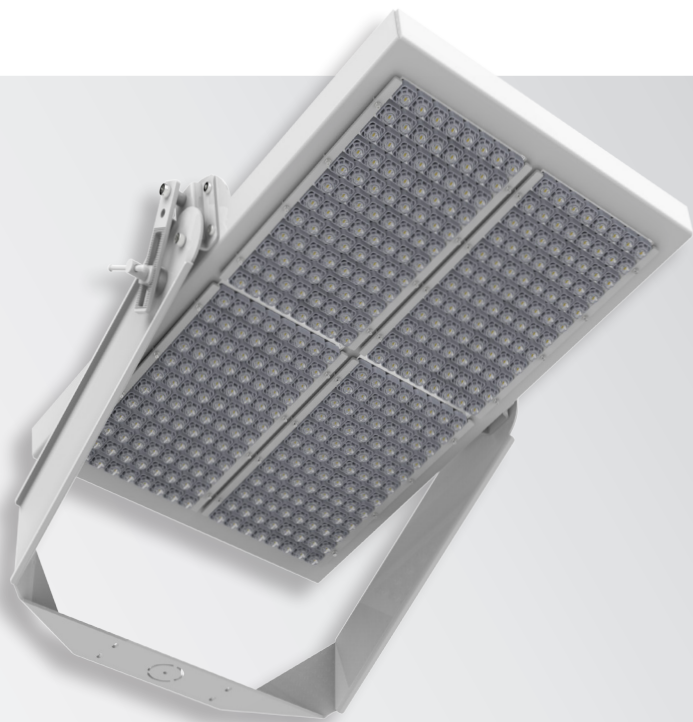
TYPICAL APPLICATIONS



PRODUCT CODE	POWER	OUTPUT (LUMENS)	INPUT CURRENT (mA)	LENGTH (MM)	WIDTH (MM)	DEPTH (MM)	WEIGHT (KG)
Andromeda-C-HMast-140	140W	16,800	800mA	516	408	154	10.2kg
Andromeda-C-HMast-160	160W	19,200	800mA	516	408	154	10.9kg
Andromeda-C-HMast-180	180W	21,600	800mA	589	408	154	11.4kg
Andromeda-C-HMast-210	210W	25,200	800mA	589	408	154	11.7kg
Andromeda-C-HMast-220	220W	26,400	800mA	665	408	154	12.5kg
Andromeda-C-HMast-250	250W	30,000	800mA	743	408	154	13.0kg
Andromeda-C-HMast-280	280W	33,600	800mA	819	408	154	14.9kg
Andromeda-C-HMast-320	320W	38,400	800mA	892	408	154	16.5kg
Andromeda-C-HMast-360	360W	43,200	800mA	968	408	154	17.2kg
Andromeda-C-HMast-370	370W	44,400	800mA	892	408	154	18.0kg
Andromeda-C-HMast-410	410W	49,200	800mA	968	408	154	18.5kg

Andromeda™ C High Mast

CERAMIC LED HIGH MAST LUMINAIRE



PRODUCT INFORMATION

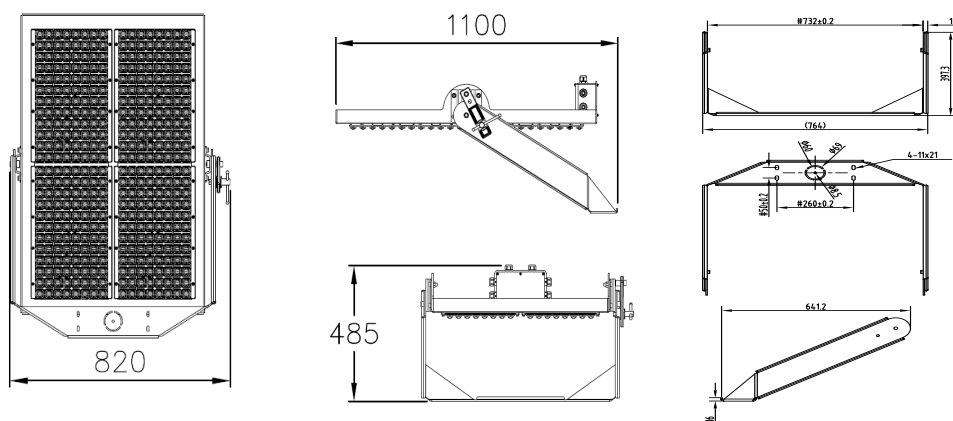
LIGHT SOURCE	Nichia High Power LED
HOUSING	6063 Aluminium (Marine Grade) Ceramic Diode Seat with Polycarbonate Pixel Rails ST12
BRACKET MATERIAL	Trunnion Arm
BRACKET TYPE	Silver, White, Black
FRAME COLOUR	IK08 (Bracket & Frame Only)
MECHANICAL IMPACT RESISTANCE	4 x Drivers per Light. Remote mounted at base of pole internally. Optional external waterproof enclosure for exterior pole mounting.
DRIVER MOUNTING	IP66
IP RATING	-40°C to 55°C
OPERATING TEMP	

TECHNICAL SPECIFICATIONS

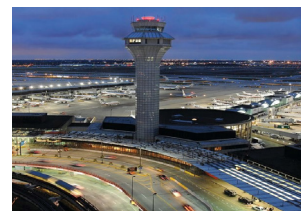
INPUT VOLTAGE	90-305VAC, 50/60Hz (Standard), Varying input available from 24V DC to 480V.
DIMMABLE	Non-dimmable standard
LIFESPAN	50,000 hours L70 B10
POWER	1000W
POWER FACTOR	0.97
BEAM ANGLE	Distribution Ranges - Refer to lens options page IESNA Type I,II,III, IV & V distribution
LUMINOUS EFFICACY	120 lm/W
CCT	5,000-5,500K Cool White >70 (CRI) Standard

Additional Options - Frame options 304SS & 316SS. Dimmable with 0-10V, PWM, DALI, PE Cell or Nema 7.
CCT Options - ~4000K Natural White & ~3000K Warm White.

SCHEMATIC OF ANDROMEDA C HMAST 1000W + BRACKET



TYPICAL APPLICATIONS



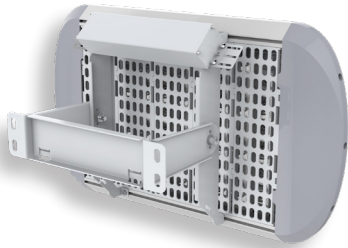
PRODUCT CODE	POWER	OUTPUT (LUMENS)	INPUT CURRENT (mA)	LENGTH (MM)	WIDTH (MM)	DEPTH (MM)	WEIGHT (KG)
Andromeda-C-HMast-1000	1000W	120,000	800mA	1100	820	485	56kg

Andromeda™ C Mounting Options

CERAMIC LUMINAIRES

Standard (Wall Mount)

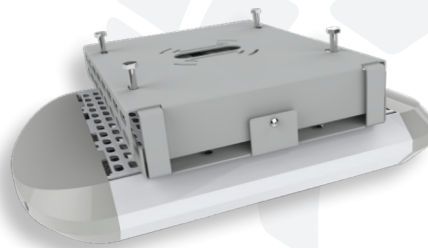
Standard adjustable wall/ceiling mount bracket on Flood. Bracket material options - ST12, 304SS, 316SS.



FLOOD

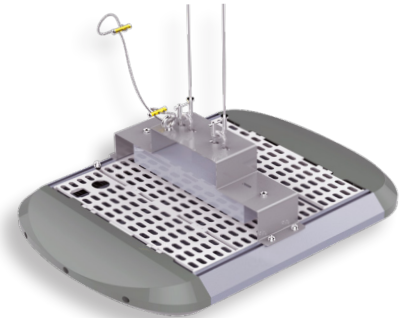
Canopy (Surface Mount)

Flat surface bracket for mounting directly to ceiling, stud or wall. Bracket material options - ST12, 304SS, 316SS.



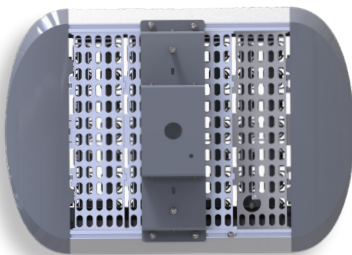
Suspension (Hooks)

Dual ST12 hooks attached to the surface bracket for suspension mounting. Bracket material options - ST12, 304SS, 316SS.



Rod Mount

Mounting bracket suitable for rod mounting with a threaded 3/4 inch pipe. Bracket material options - ST12, 304SS, 316SS.



Slip Fit

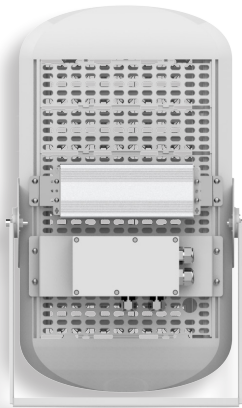
Pole fitted sleeve for Andromeda Flood units. Non adjustable. 60mmOD Pole/Arm Spigot not included. Bracket material options - ST12, 304SS, 316SS.



HIGH MAST

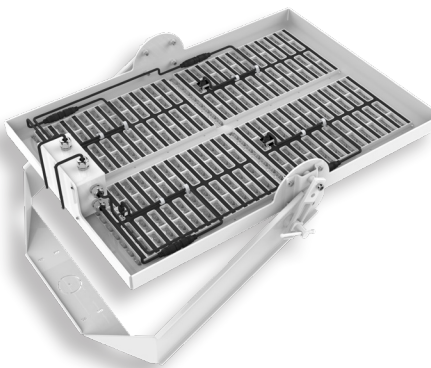
Trunnion

Heavy duty adjustable trunnion mount for High Mast luminaire. Suitable for cross beams and wall mounting. Bracket material options - ST12, 304SS & 316SS.



Forward Bracket

Bracket for 1000W High Mast luminaire suitable for forward throw mounting on cross beams. Bracket material options - ST12, 304SS & 316SS.



POLE MOUNT

Standard (Pole Mount)

Standard adjustable pole mount to pole diameter 60mm. Adapters available for other diameters.



SHIELD OR BLIND OPTIONS ARE AVAILABLE FOR ALL LUMINAIRES WITH ANY MOUNTING BRACKET. CONTACT EMPYREAN LIGHTING TO DISCUSS REQUIREMENTS

AndromedaTM

MINING

STOCKPILE

STOCKPILE APPLICATIONS

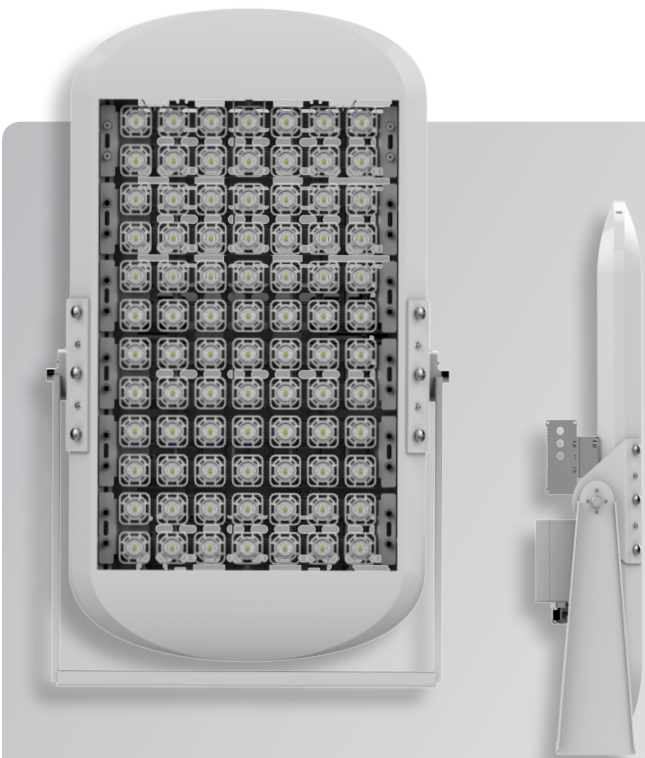
FLOODLIGHTING FOR STOCKPILES and general site areas is key for safety and operational efficiency. Our Andromeda series exceeds all the challenges of any site, regardless of geographic location, and deliver high quality and dependable illumination to critical areas.

BENEFITS OF OUR ANDROMEDA RANGE

- USES 50%-75% LESS ELECTRICITY THAN HIGH INTENSITY DISCHARGE LUMINAIRES
- LIFESPAN OF 50,000 HRS+ (TO L70)
- IS IP66
- IS AVAILABLE IN A VARIETY OF POWER, LENS TYPES & ARTICULATIONS FOR ANY ENVIRONMENT OR APPLICATION
- AVAILABLE WITH EMERGENCY BATTERY PACKS
- START UP AND SHUT DOWN IMMEDIATELY
- PERFECT FOR PHOTO OR MOTION SENSOR CONTROLS
- HAS LOW INRUSH & OPERATING CURRENTS
- CONTAINS NO HARMFUL, TOXIC SUBSTANCES (NO HG) & ARE RECYCLABLE
- DOES NOT EMIT UV RADIATION & DOES NOT REQUIRE UV BLOCKING FILTERS
- HAS ROBUST CONSTRUCTION, PERFECT FOR TOUGH & CHALLENGING CONDITIONS
- ELIMINATES MERCURY RECYCLING COSTS

Andromeda™ C High Mast

CERAMIC LED HIGH MAST LUMINAIRE



PRODUCT INFORMATION

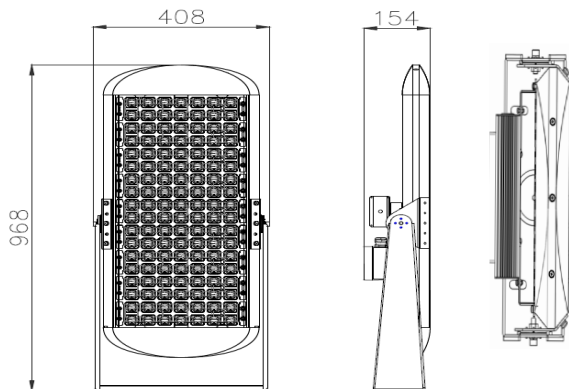
LIGHT SOURCE	Nichia High Power LED
HOUSING	6063 Aluminium (Marine Grade) Ceramic Diode Seat with Polycarbonate Pixel Rails
BRACKET MATERIAL	ST12
BRACKET TYPE	Trunnion Arm
FRAME COLOUR	Silver, White, Black
MECHANICAL IMPACT RESISTANCE	IK08 (Bracket & Frame Only)
IP RATING	IP66
OPERATING TEMP	-40°C to 55°C

TECHNICAL SPECIFICATIONS

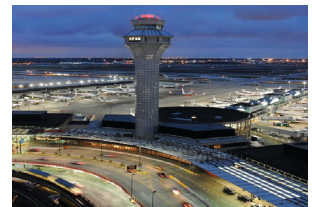
INPUT VOLTAGE	90-305VAC, 50/60Hz (Standard), Varying input available from 24V DC to 480V.
DIMMABLE	Non-dimmable standard
LIFESPAN	50,000 hours to L70
POWER	140W - 410W
POWER FACTOR	0.95
BEAM ANGLE	Distribution Ranges - Refer to lens options page
LUMINOUS EFFICACY	IESNA Type I,II,III, IV & V distribution
CCT	120 lm/W 5,000-5,500K Cool White >70 (CRI) Standard

*Additional Options - Frame options 304SS & 316SS. Dimmable with 0-10V, PWM, DALI, PE Cell or Nema 7.
CCT Options - ~4000K Natural White & ~3000K Warm White.*

SCHEMATIC OF ANDROMEDA C HMAST 360W & 410W



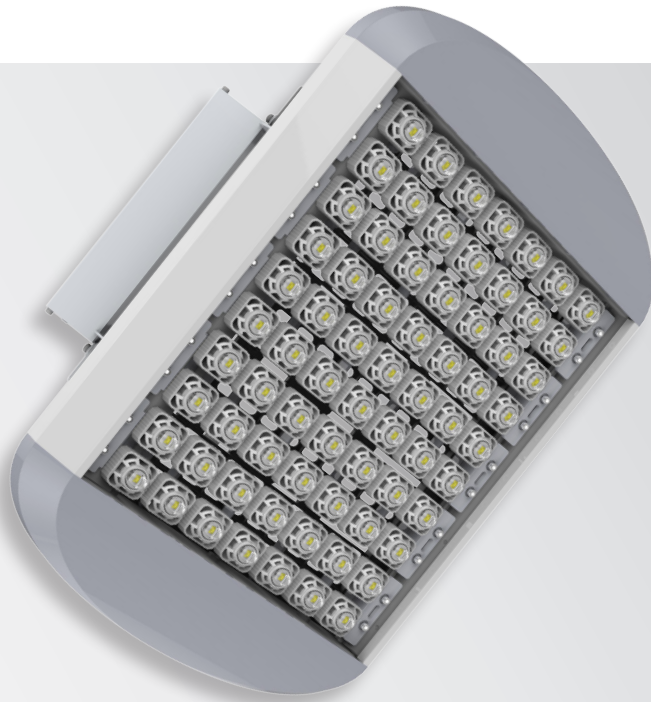
TYPICAL APPLICATIONS



PRODUCT CODE	POWER	OUTPUT (LUMENS)	INPUT CURRENT (mA)	LENGTH (MM)	WIDTH (MM)	DEPTH (MM)	WEIGHT (KG)
Andromeda-C-HMast-140	140W	16,800	800mA	516	408	154	10.2kg
Andromeda-C-HMast-160	160W	19,200	800mA	516	408	154	10.9kg
Andromeda-C-HMast-180	180W	21,600	800mA	589	408	154	11.4kg
Andromeda-C-HMast-210	210W	25,200	800mA	589	408	154	11.7kg
Andromeda-C-HMast-220	220W	26,400	800mA	665	408	154	12.5kg
Andromeda-C-HMast-250	250W	30,000	800mA	743	408	154	13.0kg
Andromeda-C-HMast-280	280W	33,600	800mA	819	408	154	14.9kg
Andromeda-C-HMast-320	320W	38,400	800mA	892	408	154	16.5kg
Andromeda-C-HMast-360	360W	43,200	800mA	968	408	154	17.2kg
Andromeda-C-HMast-370	370W	44,400	800mA	892	408	154	18.0kg
Andromeda-C-HMast-410	410W	49,200	800mA	968	408	154	18.5kg

Andromeda™ C Flood

CERAMIC LED FLOODLIGHT



PRODUCT INFORMATION

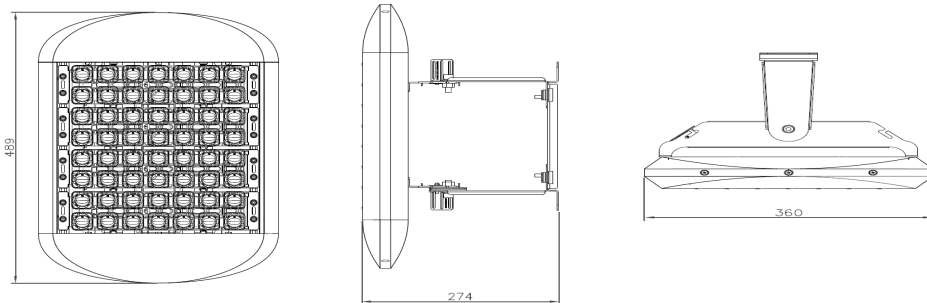
LIGHT SOURCE	Nichia High Power LED
HOUSING	6063 Aluminium (Marine Grade) Ceramic Diode Seat with Polycarbonate Pixel Rails ST12
BRACKET MATERIAL	Wall Mount, Surface Mount, Suspended (Hook)
BRACKET TYPE	Wall Mount, Surface Mount, Suspended (Hook)
FRAME COLOUR	Silver, White, Black
MECHANICAL IMPACT RESISTANCE	IK08 (Bracket & Frame Only)
IP RATING	IP66
OPERATING TEMP	-40°C to 55°C

TECHNICAL SPECIFICATIONS

INPUT VOLTAGE	90-305VAC, 50/60Hz (Standard)
DIMMABLE	Non-dimmable standard
LIFESPAN	50,000 hours to L70
POWER	40W - 410W
POWER FACTOR	0.95
BEAM ANGLE	Distribution Ranges - Refer to lens options page
LUMINOUS EFFICACY	IESNA Type I,II,III, IV & V distribution
CCT	120 lm/W 5,000-5,500K Cool White >70 (CRI) Standard

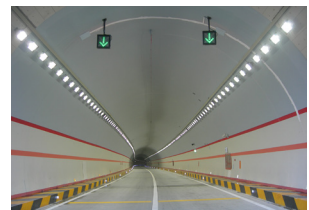
Additional Options - Frame options 304SS & 316SS. Dimmable with 0-10V, PWM, DALI, PE Cell or Nema 7. Varying input voltage including 24V DC to 480V. CCT Options - ~4000K Natural White & ~3000K Warm White.

SCHEMATIC OF ANDROMEDA C FLOOD 140W & 165W



PRODUCT CODE	POWER	OUTPUT (LUMENS)	INPUT CURRENT (mA)	LENGTH (MM)	WIDTH (MM)	DEPTH (MM)	WEIGHT (KG)
Andromeda-C-Flood-40	40W	4,800	800mA	261	360	274	4.2kg
Andromeda-C-Flood-45	45W	5,400	800mA	261	360	274	4.5kg
Andromeda-C-Flood-70	70W	8,400	800mA	337	360	274	5.1kg
Andromeda-C-Flood-85	85W	10,200	800mA	337	360	274	5.5kg
Andromeda-C-Flood-110	110W	13,200	800mA	413	360	274	5.9kg
Andromeda-C-Flood-125	125W	15,000	800mA	413	360	274	6.3kg
Andromeda-C-Flood-140	140W	16,800	800mA	489	360	274	6.7kg
Andromeda-C-Flood-165	165W	19,800	800mA	489	360	274	7.2kg
Andromeda-C-Flood-180	180W	21,600	800mA	565	360	274	8.3kg
Andromeda-C-Flood-210	210W	25,200	800mA	565	360	274	8.6kg
Andromeda-C-Flood-220	220W	26,400	800mA	641	360	274	9.2kg
Andromeda-C-Flood-250	250W	30,000	800mA	641	360	274	10.4kg
Andromeda-C-Flood-280	280W	33,600	800mA	717	360	274	12.0kg
Andromeda-C-Flood-320	320W	38,400	800mA	869	360	274	14.8kg
Andromeda-C-Flood-360	360W	43,200	800mA	945	360	274	15.0kg
Andromeda-C-Flood-370	370W	44,400	800mA	869	360	274	15.3kg
Andromeda-C-Flood-410	410W	49,200	800mA	945	360	274	16.1kg

TYPICAL APPLICATIONS

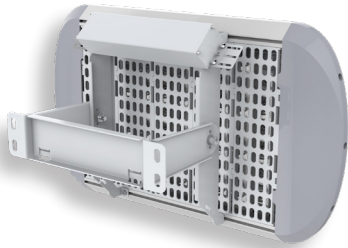


Andromeda™ C Mounting Options

CERAMIC LUMINAIRES

Standard (Wall Mount)

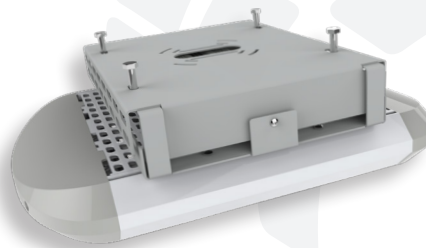
Standard adjustable wall/ceiling mount bracket on Flood. Bracket material options - ST12, 304SS, 316SS.



FLOOD

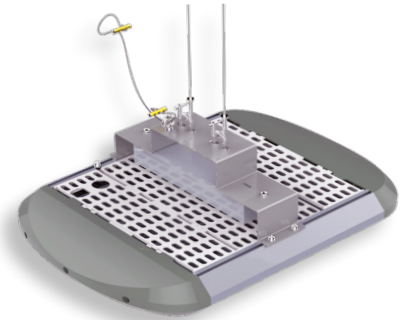
Canopy (Surface Mount)

Flat surface bracket for mounting directly to ceiling, stud or wall. Bracket material options - ST12, 304SS, 316SS.



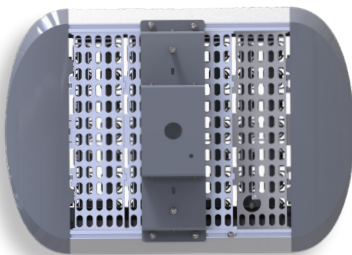
Suspension (Hooks)

Dual ST12 hooks attached to the surface bracket for suspension mounting. Bracket material options - ST12, 304SS, 316SS.



Rod Mount

Mounting bracket suitable for rod mounting with a threaded 3/4 inch pipe. Bracket material options - ST12, 304SS, 316SS.



Slip Fit

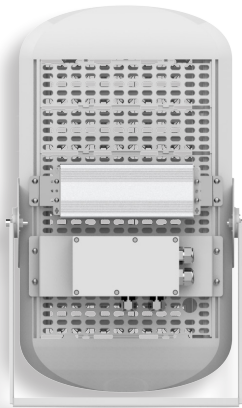
Pole fitted sleeve for Andromeda Flood units. Non adjustable. 60mmOD Pole/Arm Spigot not included. Bracket material options - ST12, 304SS, 316SS.



HIGH MAST

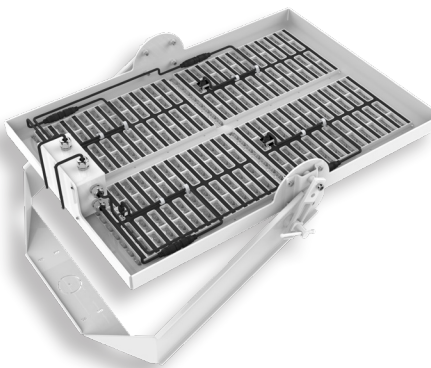
Trunnion

Heavy duty adjustable trunnion mount for High Mast luminaire. Suitable for cross beams and wall mounting. Bracket material options - ST12, 304SS & 316SS.



Forward Bracket

Bracket for 1000W High Mast luminaire suitable for forward throw mounting on cross beams. Bracket material options - ST12, 304SS & 316SS.



POLE MOUNT

Standard (Pole Mount)

Standard adjustable pole mount to pole diameter 60mm. Adapters available for other diameters.



SHIELD OR BLIND OPTIONS ARE AVAILABLE FOR ALL LUMINAIRES WITH ANY MOUNTING BRACKET. CONTACT EMPYREAN LIGHTING TO DISCUSS REQUIREMENTS

Andromeda

MINING

WAREHOUSE

WAREHOUSE APPLICATIONS

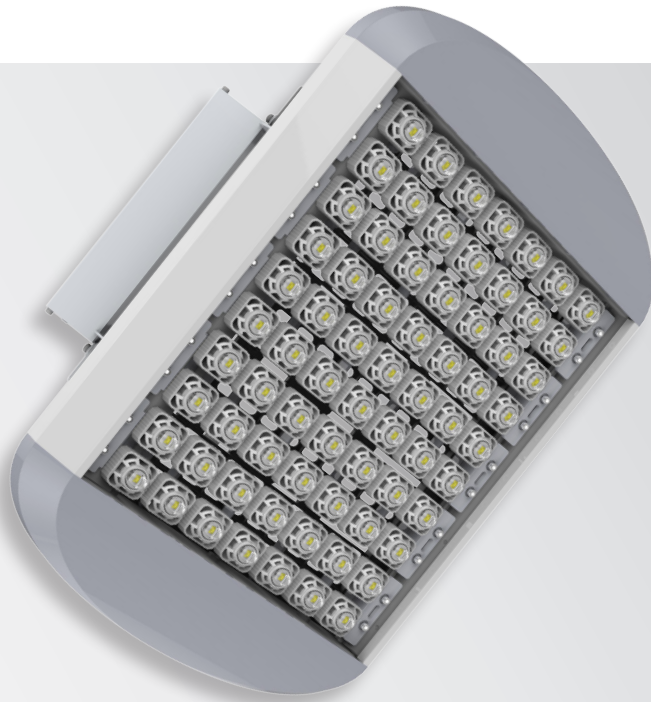
LIGHTING IN WAREHOUSING IS DIVERSE but always critical. Whether it is low level controllable lighting for safe movement, or high intensity light for processes and workshops, the Andromeda series covers it all. Available in powers from 30W to 300W and totally controllable, there is an Andromeda luminaire for each and every warehouse application.

BENEFITS OF OUR ANDROMEDA RANGE

- USES 50%-75% LESS ELECTRICITY THAN HIGH INTENSITY DISCHARGE LUMINAIRES
- LIFESPAN OF 50,000 HRS+ (TO L70)
- IS IP66
- IS AVAILABLE IN A VARIETY OF POWER, LENS TYPES & ARTICULATIONS FOR ANY ENVIRONMENT OR APPLICATION
- AVAILABLE WITH EMERGENCY BATTERY PACKS
- START UP AND SHUT DOWN IMMEDIATELY
- PERFECT FOR PHOTO OR MOTION SENSOR CONTROLS
- HAS LOW INRUSH & OPERATING CURRENTS
- CONTAINS NO HARMFUL, TOXIC SUBSTANCES (NO HG) & ARE RECYCLABLE
- DOES NOT EMIT UV RADIATION & DOES NOT REQUIRE UV BLOCKING FILTERS
- HAS ROBUST CONSTRUCTION, PERFECT FOR TOUGH & CHALLENGING CONDITIONS
- ELIMINATES MERCURY RECYCLING COSTS

Andromeda™ C Flood

CERAMIC LED FLOODLIGHT



PRODUCT INFORMATION

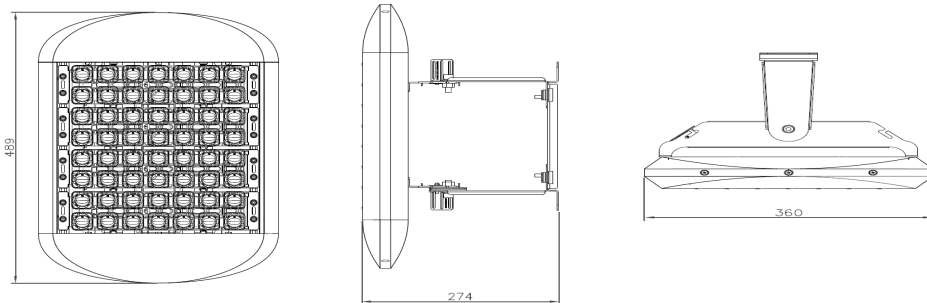
LIGHT SOURCE	Nichia High Power LED
HOUSING	6063 Aluminium (Marine Grade) Ceramic Diode Seat with Polycarbonate Pixel Rails ST12
BRACKET MATERIAL	Wall Mount, Surface Mount, Suspended (Hook)
BRACKET TYPE	Wall Mount, Surface Mount, Suspended (Hook)
FRAME COLOUR	Silver, White, Black
MECHANICAL IMPACT RESISTANCE	IK08 (Bracket & Frame Only)
IP RATING	IP66
OPERATING TEMP	-40°C to 55°C

TECHNICAL SPECIFICATIONS

INPUT VOLTAGE	90-305VAC, 50/60Hz (Standard)
DIMMABLE	Non-dimmable standard
LIFESPAN	50,000 hours to L70
POWER	40W - 410W
POWER FACTOR	0.95
BEAM ANGLE	Distribution Ranges - Refer to lens options page
LUMINOUS EFFICACY	IESNA Type I,II,III, IV & V distribution
CCT	120 lm/W 5,000-5,500K Cool White >70 (CRI) Standard

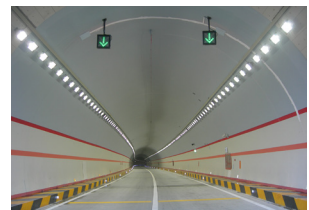
Additional Options - Frame options 304SS & 316SS. Dimmable with 0-10V, PWM, DALI, PE Cell or Nema 7. Varying input voltage including 24V DC to 480V. CCT Options - ~4000K Natural White & ~3000K Warm White.

SCHEMATIC OF ANDROMEDA C FLOOD 140W & 165W



PRODUCT CODE	POWER	OUTPUT (LUMENS)	INPUT CURRENT (mA)	LENGTH (MM)	WIDTH (MM)	DEPTH (MM)	WEIGHT (KG)
Andromeda-C-Flood-40	40W	4,800	800mA	261	360	274	4.2kg
Andromeda-C-Flood-45	45W	5,400	800mA	261	360	274	4.5kg
Andromeda-C-Flood-70	70W	8,400	800mA	337	360	274	5.1kg
Andromeda-C-Flood-85	85W	10,200	800mA	337	360	274	5.5kg
Andromeda-C-Flood-110	110W	13,200	800mA	413	360	274	5.9kg
Andromeda-C-Flood-125	125W	15,000	800mA	413	360	274	6.3kg
Andromeda-C-Flood-140	140W	16,800	800mA	489	360	274	6.7kg
Andromeda-C-Flood-165	165W	19,800	800mA	489	360	274	7.2kg
Andromeda-C-Flood-180	180W	21,600	800mA	565	360	274	8.3kg
Andromeda-C-Flood-210	210W	25,200	800mA	565	360	274	8.6kg
Andromeda-C-Flood-220	220W	26,400	800mA	641	360	274	9.2kg
Andromeda-C-Flood-250	250W	30,000	800mA	641	360	274	10.4kg
Andromeda-C-Flood-280	280W	33,600	800mA	717	360	274	12.0kg
Andromeda-C-Flood-320	320W	38,400	800mA	869	360	274	14.8kg
Andromeda-C-Flood-360	360W	43,200	800mA	945	360	274	15.0kg
Andromeda-C-Flood-370	370W	44,400	800mA	869	360	274	15.3kg
Andromeda-C-Flood-410	410W	49,200	800mA	945	360	274	16.1kg

TYPICAL APPLICATIONS

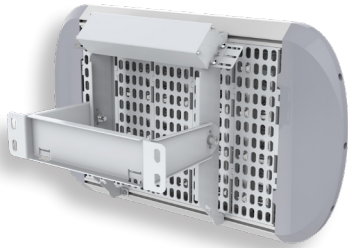


Andromeda™ C Mounting Options

CERAMIC LUMINAIRES

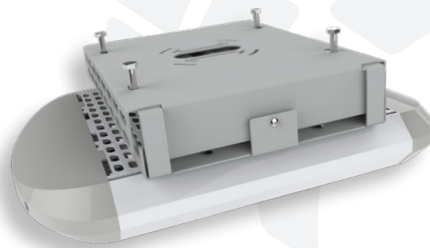
Standard (Wall Mount)

Standard adjustable wall/ceiling mount bracket on Flood. Bracket material options - ST12, 304SS, 316SS.



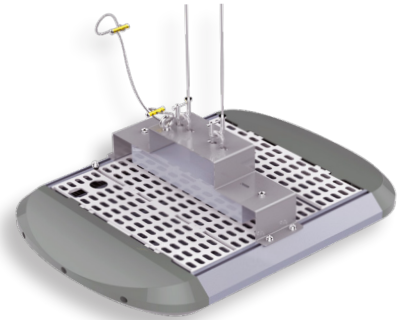
FLOOD Canopy (Surface Mount)

Flat surface bracket for mounting directly to ceiling, stud or wall. Bracket material options - ST12, 304SS, 316SS.



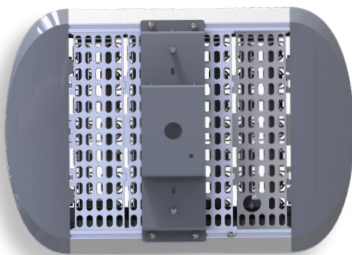
Suspension (Hooks)

Dual ST12 hooks attached to the surface bracket for suspension mounting. Bracket material options - ST12, 304SS, 316SS.



Rod Mount

Mounting bracket suitable for rod mounting with a threaded 3/4 inch pipe. Bracket material options - ST12, 304SS, 316SS.



Slip Fit

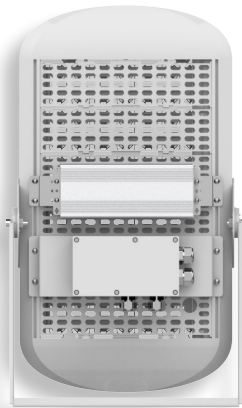
Pole fitted sleeve for Andromeda Flood units. Non adjustable. 60mmOD Pole/Arm Spigot not included. Bracket material options - ST12, 304SS, 316SS.



HIGH MAST

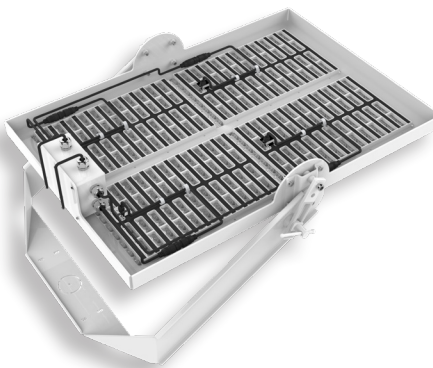
Trunnion

Heavy duty adjustable trunnion mount for High Mast luminaire. Suitable for cross beams and wall mounting. Bracket material options - ST12, 304SS & 316SS.



Forward Bracket

Bracket for 1000W High Mast luminaire suitable for forward throw mounting on cross beams. Bracket material options - ST12, 304SS & 316SS.



POLE MOUNT

Standard (Pole Mount)

Standard adjustable pole mount to pole diameter 60mm. Adapters available for other diameters.



SHIELD OR BLIND OPTIONS ARE AVAILABLE FOR ALL LUMINAIRES WITH ANY MOUNTING BRACKET. CONTACT EMPYREAN LIGHTING TO DISCUSS REQUIREMENTS