

AndromedaTM

MINING

GANTRIES & WALKWAYS

GANTRY & WALKWAY APPLICATIONS

SAFE MOVEMENT FOR PERSONNEL is paramount on all mine and industrial sites. Our Andromeda linear and park luminaires ensure safety guidelines are met comprehensively.

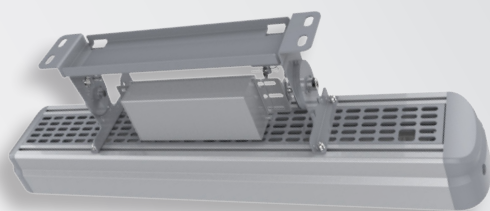
Unparalleled performance is achieved through independent lensing, rugged IP66 construction, and a proven track record on diverse sites from the Canadian Arctic to the Australian Outback.

BENEFITS OF OUR ANDROMEDA RANGE

- USES 50%-75% LESS ELECTRICITY THAN HIGH INTENSITY DISCHARGE LUMINAIRES
- LIFESPAN OF 50,000 HRS+ (TO L70)
- IS IP66
- IS AVAILABLE IN A VARIETY OF POWER, LENS TYPES & ARTICULATIONS FOR ANY ENVIRONMENT OR APPLICATION
- AVAILABLE WITH EMERGENCY BATTERY PACKS
- START UP AND SHUT DOWN IMMEDIATELY
- PERFECT FOR PHOTO OR MOTION SENSOR CONTROLS
- HAS LOW INRUSH & OPERATING CURRENTS
- CONTAINS NO HARMFUL, TOXIC SUBSTANCES (NO HG) & ARE RECYCLABLE
- DOES NOT EMIT UV RADIATION & DOES NOT REQUIRE UV BLOCKING FILTERS
- HAS ROBUST CONSTRUCTION, PERFECT FOR TOUGH & CHALLENGING CONDITIONS
- ELIMINATES MERCURY RECYCLING COSTS

Andromeda™ C Linear

CERAMIC LED LINEAR FLOODLIGHTS



PRODUCT INFORMATION

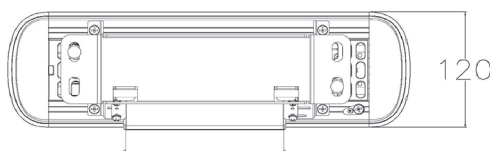
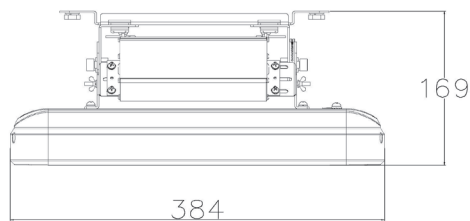
LIGHT SOURCE	Nichia High Power LED
HOUSING	6063 Aluminium (Marine Grade) Ceramic Diode Seat with Polycarbonate Pixel Rails ST12
BRACKET MATERIAL	
BRACKET TYPE	Wall Mount/Surface Mount (Adjustable)
FRAME COLOUR	Silver, White, Black
MECHANICAL IMPACT RESISTANCE	IK08 (Bracket & Frame Only)
IP RATING	IP66
OPERATING TEMP	-40°C to 55°C

TECHNICAL SPECIFICATIONS

INPUT VOLTAGE	90-305VAC, 50/60Hz (Standard)
DIMMABLE	Non-dimmable standard
LIFESPAN	50,000 hours to L70
POWER	40W - 125W
POWER FACTOR	0.95
BEAM ANGLE	Distribution Ranges - Refer to lens options page IESNA Type I,II,III, IV & V distribution
LUMINOUS EFFICACY	120 lm/W
CCT	5,000-5,500K Cool White >70 (CRI) Standard

Additional Options - Frame options 304SS & 316SS. Dimmable with 0-10V, PWM, DALI, PE Cell or Nema 7. Varying input voltage including 24V DC to 480V. CCT Options - ~4000K Natural White & ~3000K Warm White.

SCHEMATIC OF ANDROMEDA C LINEAR 40W & 45W



TYPICAL APPLICATIONS



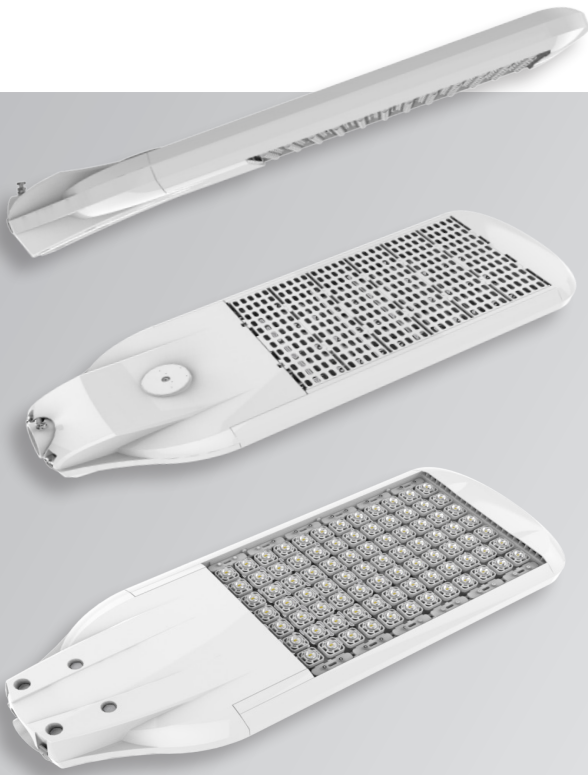
PRODUCT CODE	POWER	OUTPUT* (LUMENS)	INPUT CURRENT (mA)	LENGTH (MM)	WIDTH (MM)	DEPTH (MM)	WEIGHT (KG)
Andromeda-C-Linear-40	40W	4,400	800mA	384	120	169	2.6kg
Andromeda-C-Linear-45	45W	5,400	800mA	384	120	169	2.6kg
Andromeda-C-Linear-70	70W	8,400	800mA	552	120	169	3.6kg
Andromeda-C-Linear-85	85W	10,200	800mA	552	120	169	3.7kg
Andromeda-C-Linear-110	110W	13,200	800mA	990	120	169	6.7kg
Andromeda-C-Linear-125	125W	15,000	800mA	990	120	169	6.8kg

Andromeda™ C Pole Mount

CERAMIC POLE MOUNT LED LUMINAIRE

NICHIA HIGH POWER 90-305VAC SHOCK RESISTANT IP66 RATING 70 CRI L70 50,000 HRS 0.95 POWER FACTOR

NS433 N26539 EUL CE RoHS



PRODUCT INFORMATION

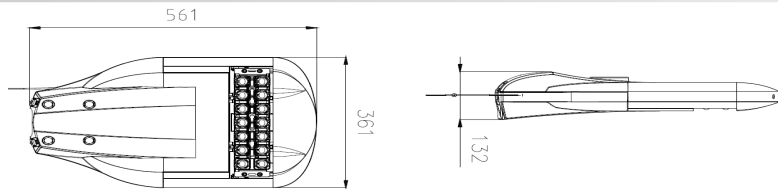
LIGHT SOURCE	Nichia High Power LED
HOUSING	6063 Aluminium (Marine Grade) Ceramic Diode Seat with Polycarbonate Pixel Rails ST12
BRACKET MATERIAL	Pole Mount 60mm Outer Diameter with Adjustable Angle Mount -10° to 15° & Secure Point Cable
BRACKET TYPE	Silver, White
FRAME COLOUR	IK08 (Bracket & Frame Only)
MECHANICAL IMPACT RESISTANCE	IP66
IP RATING	-40°C to 70°C
OPERATING TEMP	

TECHNICAL SPECIFICATIONS

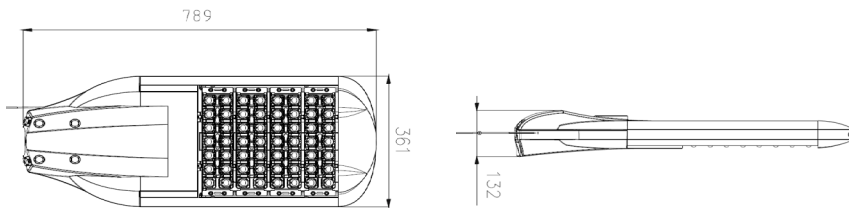
INPUT VOLTAGE	90-305VAC, 50/60Hz (Standard)
DIMMABLE	Non-dimmable standard
LIFESPAN	50,000 hours to L70
POWER	40W - 250W
POWER FACTOR	0.95
BEAM ANGLE	Distribution Ranges - Refer to lens options page IESNA Type I,II,III, IV & V distribution
LUMINOUS EFFICACY	120 lm/W
CCT	5,000-5,500K Cool White >70 (CRI) Standard

Additional Options - Frame options 304SS & 316SS. Dimmable with 0-10V, PWM, DALI, PE Cell or Nema 7. Varying input voltage including 24V DC to 480V. CCT Options - ~4000K Natural White & ~3000K Warm White.

SCHEMATIC OF ANDROMEDA C POLE 70W & 85W



SCHEMATIC OF ANDROMEDA C POLE 140W & 160W



TYPICAL APPLICATIONS



PRODUCT CODE	POWER	OUTPUT* (LUMENS)	INPUT CURRENT (mA)	LENGTH (MM)	WIDTH (MM)	DEPTH (MM)	WEIGHT (KG)
Andromeda-C-PoleM-40	40W	4,800	800mA	561	361	132	8.3kg
Andromeda-C-PoleM-45	45W	5,400	800mA	561	361	132	8.5kg
Andromeda-C-PoleM-70	70W	8,400	800mA	637	361	132	9.4kg
Andromeda-C-PoleM-85	85W	10,200	800mA	637	361	132	9.5kg
Andromeda-C-PoleM-110	110W	13,200	800mA	713	361	132	10.0kg
Andromeda-C-PoleM-125	125W	15,000	800mA	713	361	132	10.6kg
Andromeda-C-PoleM-140	140W	16,800	800mA	789	361	132	11.0kg
Andromeda-C-PoleM-160	160W	19,200	800mA	789	361	132	11.6kg
Andromeda-C-PoleM-180	180W	21,600	800mA	865	361	132	12.0kg
Andromeda-C-PoleM-210	210W	25,200	800mA	865	361	132	12.5kg
Andromeda-C-PoleM-220	220W	26,400	800mA	941	361	132	13.0kg
Andromeda-C-PoleM-250	250W	30,000	800mA	941	361	132	13.8kg