

# Polaris™ High Bay

## HIGH INTENSITY LED LIGHTS



### PRODUCT INFORMATION



WEIGHT RANGE	1.4kg to 2.4kg
LIGHT SOURCE	Nichia High Power LED
HOUSING	Ceramic Diode Seat with Polycarbonate Pixel
BRACKET MATERIAL	Carbon Steel
MOUNTING OPTIONS	Suspended (Standard 1 Hook) or Ceiling Mount available
FRAME COLOUR	Black, White
CONTROL	0-10V, DALI
MECHANICAL IMPACT RESISTANCE	IK10
IP RATING	IP65
OPERATING TEMP	-25°C to 50°C

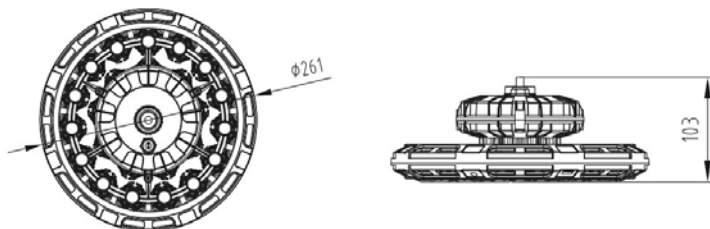
### TECHNICAL SPECIFICATIONS

INPUT VOLTAGE	176~264VAC, 50/60Hz
DIMMABLE OPTIONAL	Yes, 0-10V or DALI
LIFESPAN	50,000 hours to L70
POWER	100W, 150W, 200W
BEAM ANGLE	60°, 90°, 120°
LUMINOUS EFFICACY	150 lm/W
CCT	5,000K Cool White* 4,000K Natural White 3,000K Warm White*

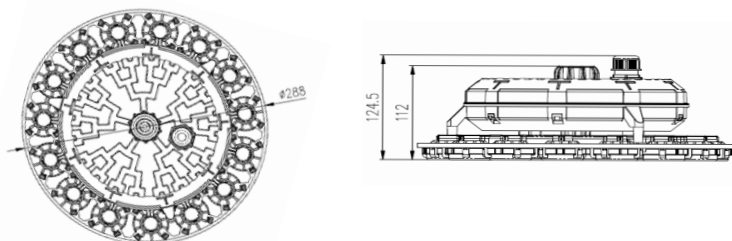
\* FIGURES REPRESENTED IN LUMEN OUTPUT TABLE BELOW AT 5,000K

\* MOQ'S APPLY FOR 3,000K PLEASE CONTACT EMPYREAN DIRECTLY

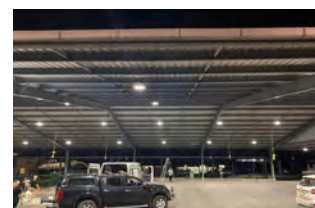
### SCHEMATIC OF POLARISHB-C-100W



### SCHEMATIC OF POLARISHB-C-200W



### TYPICAL APPLICATIONS



PRODUCT CODE (LUMENS)	POWER (MM)	OUTPUT* (MM)	DIAMETER (MM)	DEPTH (MM)	Weight
PolarisHB-C-100W	100W	15,000	261	103	1.4kg
PolarisHB-C-150W	150W	22,500	261	103	1.4kg
PolarisHB-C-200W	200W	30,000	288	124.5	2.4kg